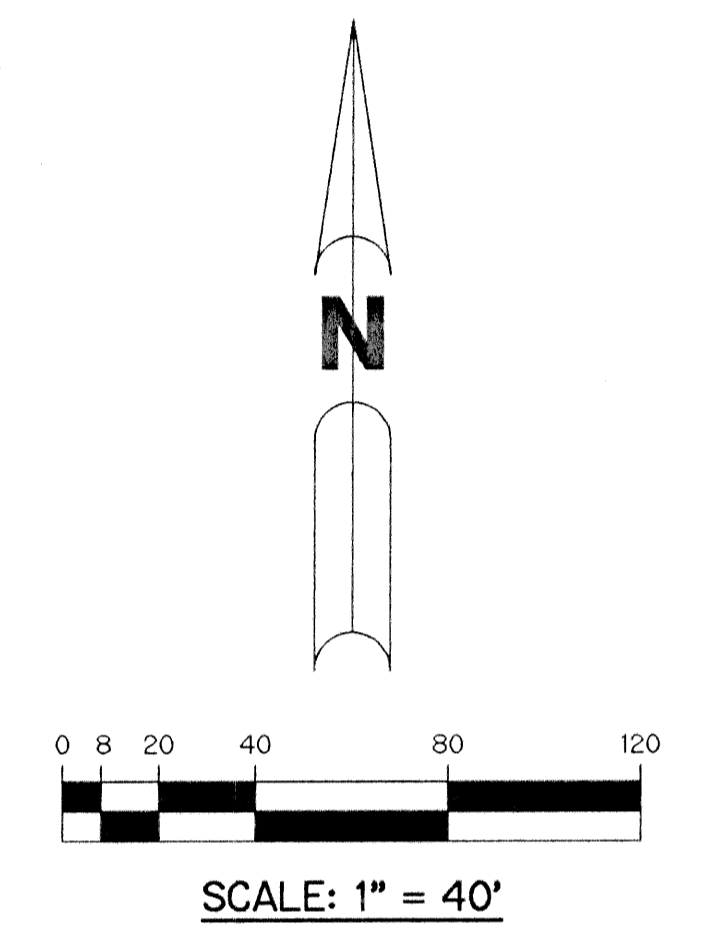
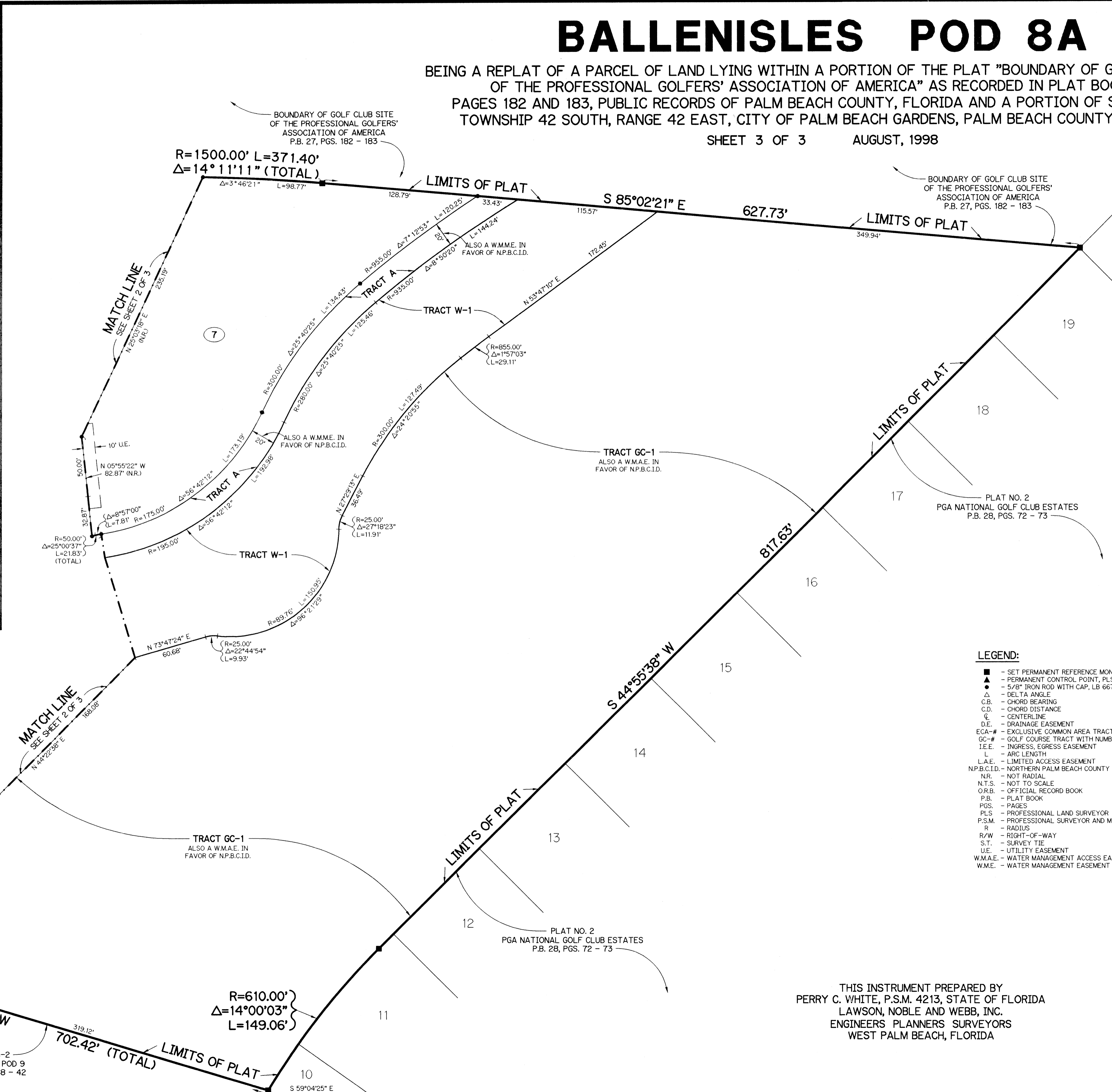
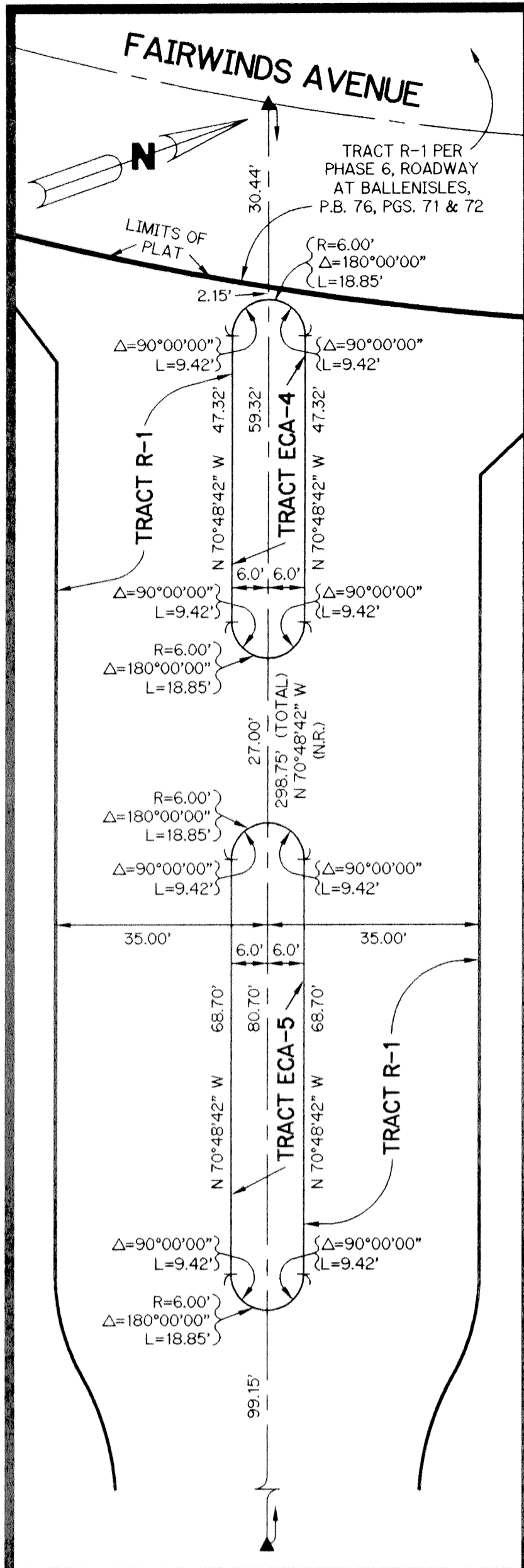


BALLENISLES POD 8A

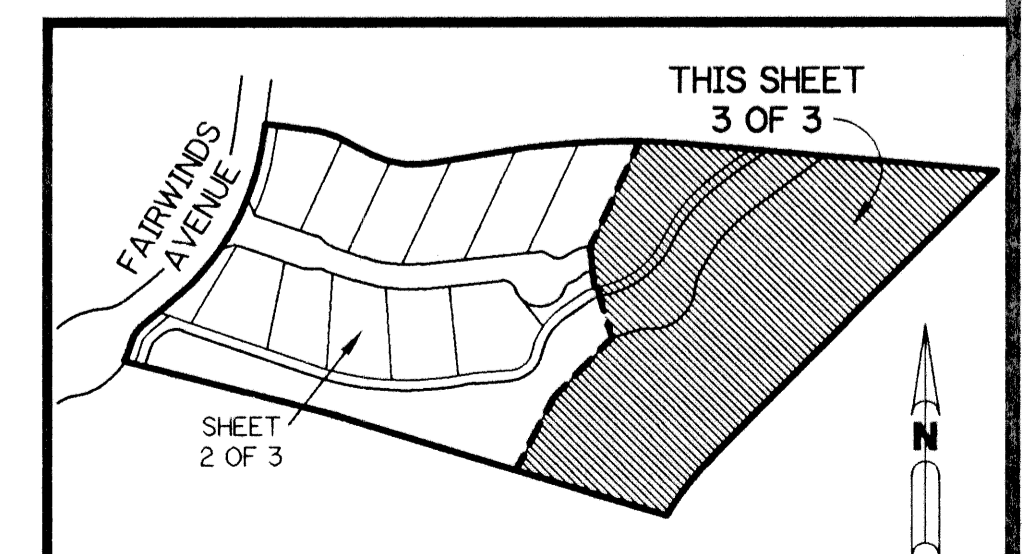
BEING A REPLAT OF A PARCEL OF LAND LYING WITHIN A PORTION OF THE PLAT "BOUNDARY OF GOLF CLUB SITE OF THE PROFESSIONAL GOLFERS' ASSOCIATION OF AMERICA" AS RECORDED IN PLAT BOOK 27, PAGES 182 AND 183, PUBLIC RECORDS OF PALM BEACH COUNTY, FLORIDA AND A PORTION OF SECTION 12, TOWNSHIP 42 SOUTH, RANGE 42 EAST, CITY OF PALM BEACH GARDENS, PALM BEACH COUNTY, FLORIDA.

SHEET 3 OF 3 AUGUST, 1998



- LEGEND:**
- - SET PERMANENT REFERENCE MONUMENT, PLS #4213
 - ▲ - PERMANENT CONTROL POINT, PLS #4213 TO BE SET
 - - 5/8" IRON ROD WITH CAP, LB 6674 TO BE SET
 - Δ - DELTA ANGLE
 - C.B. - CHORD BEARING
 - C.D. - CHORD DISTANCE
 - ℄ - CENTERLINE
 - D.E. - DRAINAGE EASEMENT
 - ECA-# - EXCLUSIVE COMMON AREA TRACT WITH NUMBER
 - GC-# - GOLF COURSE TRACT WITH NUMBER
 - I.E.E. - INGRESS, EGRESS EASEMENT
 - L - ARC LENGTH
 - L.A.E. - LIMITED ACCESS EASEMENT
 - N.P.B.C.I.D. - NORTHERN PALM BEACH COUNTY IMPROVEMENT DISTRICT
 - N.R. - NOT RADIAL
 - N.T.S. - NOT TO SCALE
 - O.R.B. - OFFICIAL RECORD BOOK
 - P.B. - PLAT BOOK
 - PGS. - PAGES
 - PLS - PROFESSIONAL LAND SURVEYOR
 - P.S.M. - PROFESSIONAL SURVEYOR AND MAPPER
 - R - RADIUS
 - R/W - RIGHT-OF-WAY
 - S.T. - SURVEY TIE
 - U.E. - UTILITY EASEMENT
 - W.M.A.E. - WATER MANAGEMENT ACCESS EASEMENT
 - W.M.E. - WATER MANAGEMENT EASEMENT

KEY MAP



THIS INSTRUMENT PREPARED BY
 PERRY C. WHITE, P.S.M. 4213, STATE OF FLORIDA
 LAWSON, NOBLE AND WEBB, INC.
 ENGINEERS PLANNERS SURVEYORS
 WEST PALM BEACH, FLORIDA