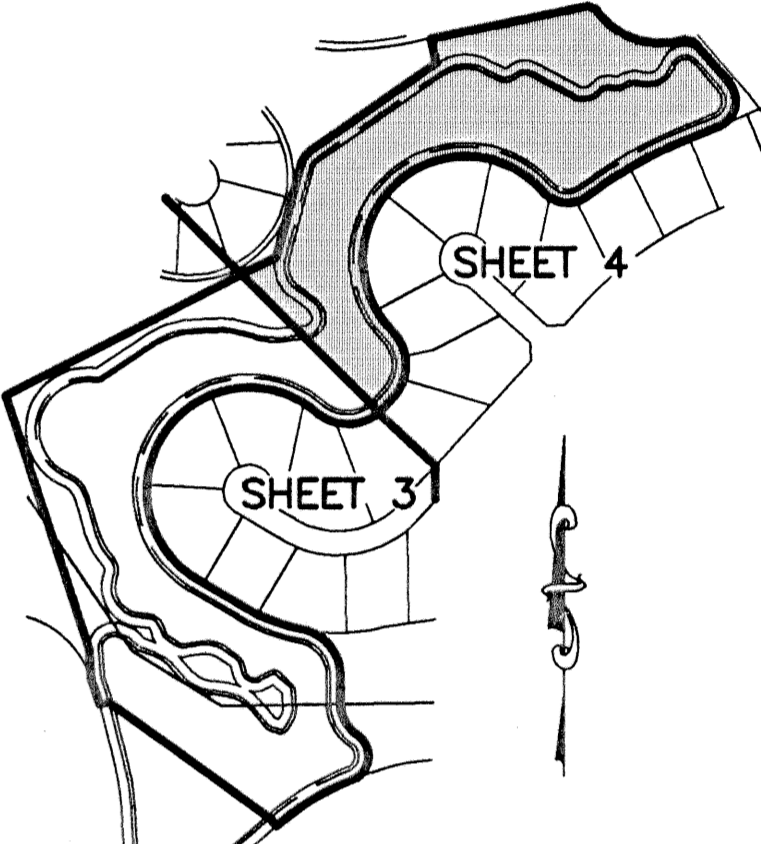
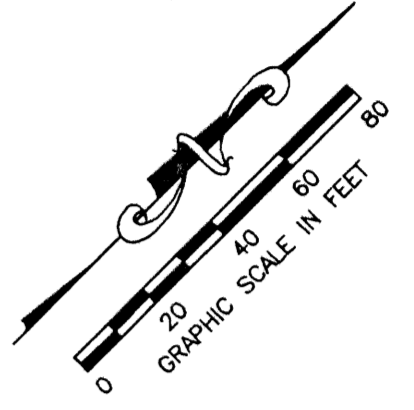


ADDISON RESERVE REPLAT LAKE 19

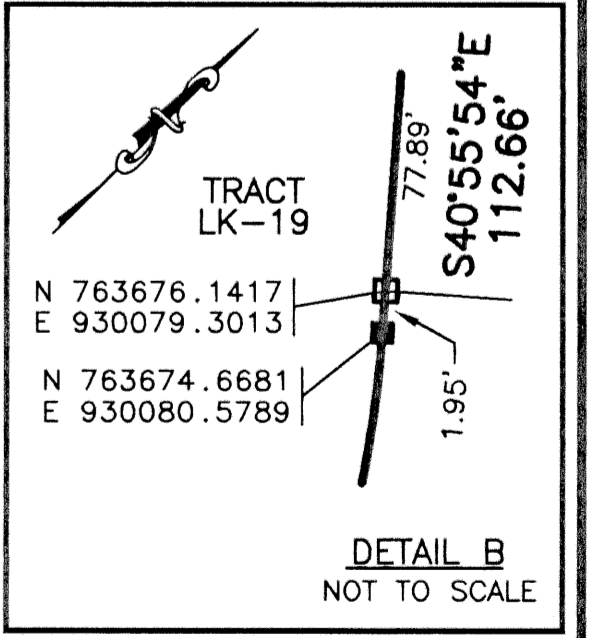
154

STATE OF FLORIDA
 COUNTY OF PALM BEACH
 THIS PLAT WAS FILED FOR
 RECORD _____ DAY OF _____
 AD, 1998 AND DULY RECORDED IN
 PLAT BOOK _____ ON PAGES
 _____ AND _____
 DOROTHY H. WILKEN, CLERK
 BY: _____, D.C.

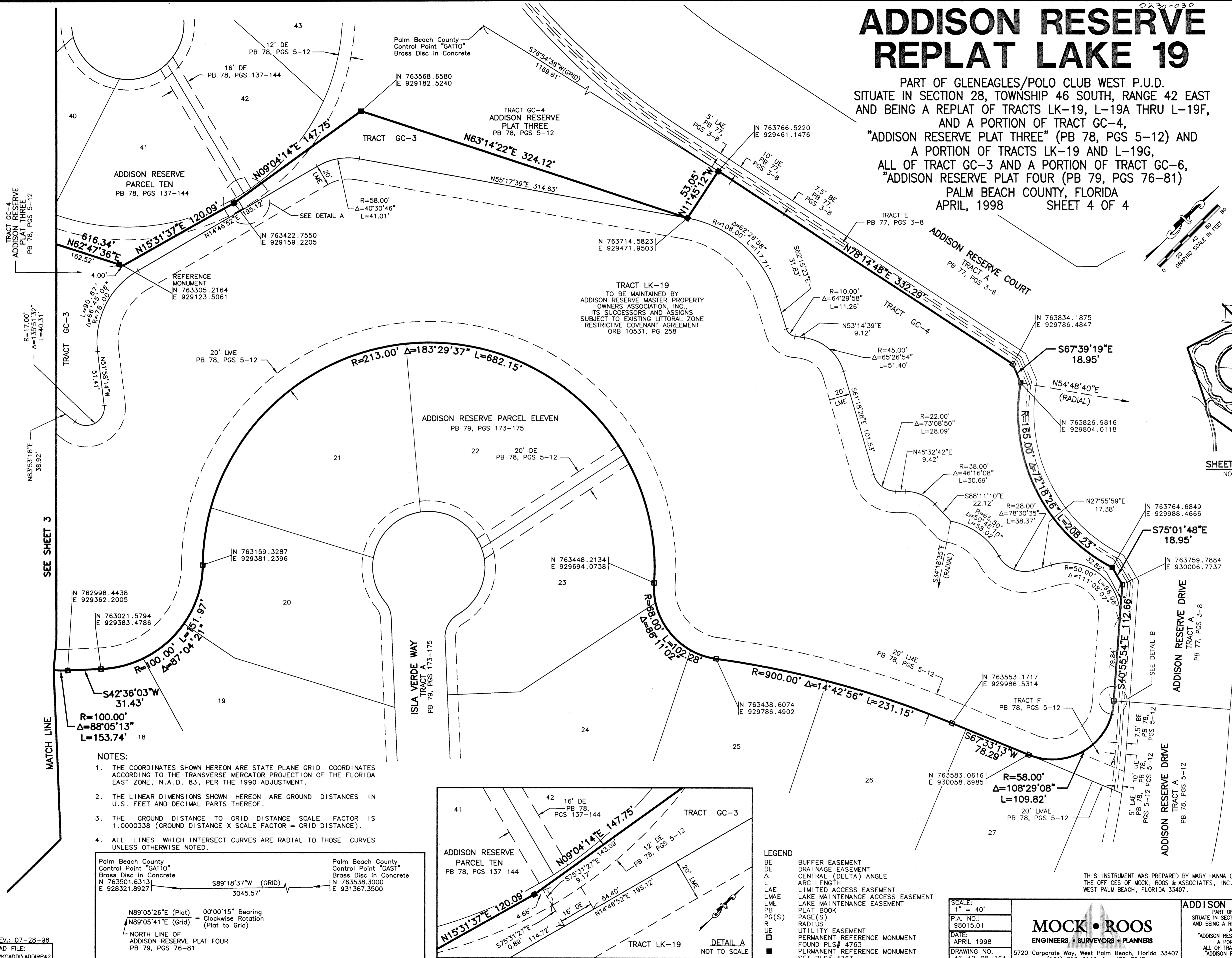
PART OF GLENEAGLES/POLO CLUB WEST P.U.D.
 SITUATE IN SECTION 28, TOWNSHIP 46 SOUTH, RANGE 42 EAST
 AND BEING A REPLAT OF TRACTS LK-19, L-19A THRU L-19F,
 AND A PORTION OF TRACT GC-4,
 "ADDISON RESERVE PLAT THREE" (PB 78, PGS 5-12) AND
 A PORTION OF TRACTS LK-19 AND L-19G,
 ALL OF TRACT GC-3 AND A PORTION OF TRACT GC-6,
 "ADDISON RESERVE PLAT FOUR" (PB 79, PGS 76-81)
 PALM BEACH COUNTY, FLORIDA
 APRIL, 1998 SHEET 4 OF 4



SHEET INDEX MAP
 NOT TO SCALE



DETAIL B
 NOT TO SCALE



- NOTES:
1. THE COORDINATES SHOWN HEREON ARE STATE PLANE GRID COORDINATES ACCORDING TO THE TRANSVERSE MERCATOR PROJECTION OF THE FLORIDA EAST ZONE, N.A.D. 83, PER THE 1990 ADJUSTMENT.
 2. THE LINEAR DIMENSIONS SHOWN HEREON ARE GROUND DISTANCES IN U.S. FEET AND DECIMAL PARTS THEREOF.
 3. THE GROUND DISTANCE TO GRID DISTANCE SCALE FACTOR IS 1.0000338 (GROUND DISTANCE X SCALE FACTOR = GRID DISTANCE).
 4. ALL LINES WHICH INTERSECT CURVES ARE RADIAL TO THOSE CURVES UNLESS OTHERWISE NOTED.

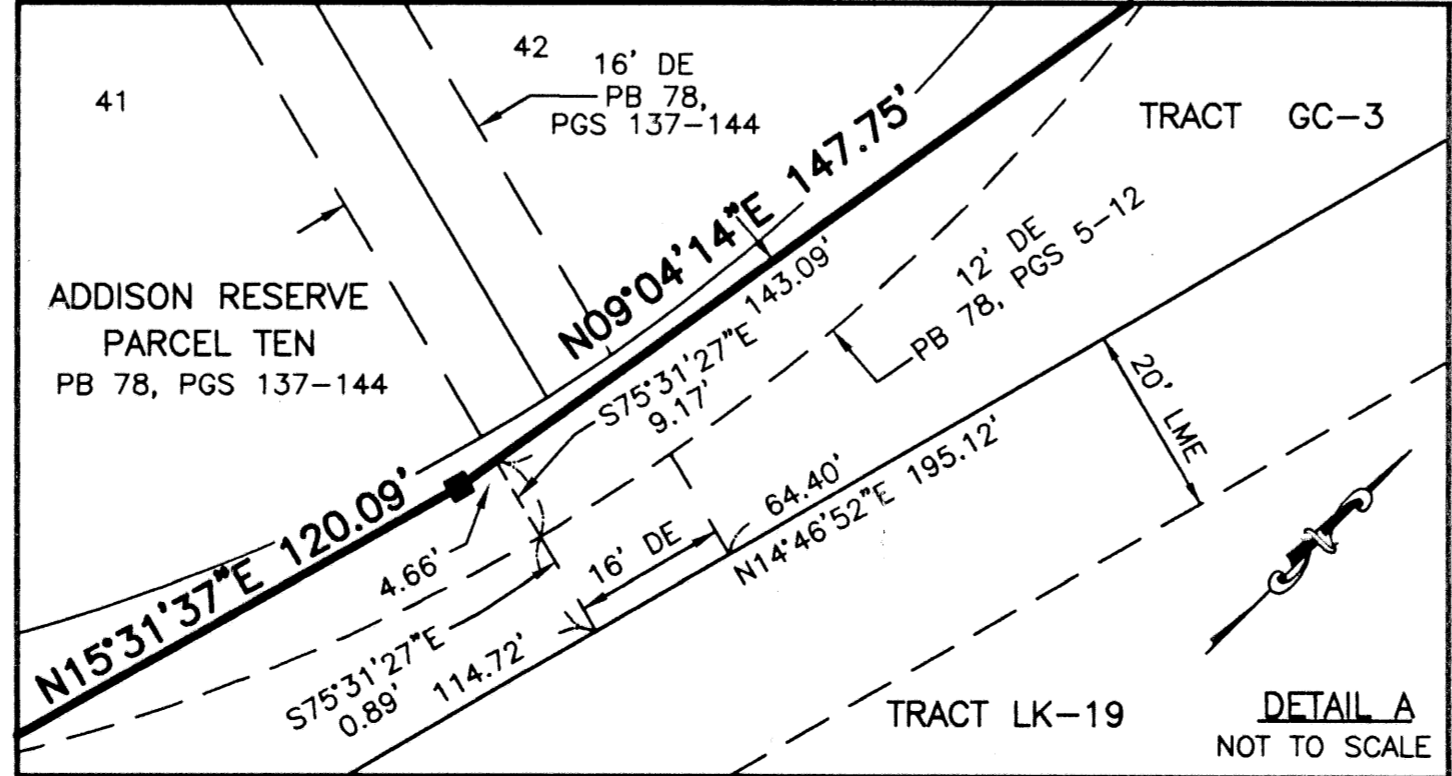
Palm Beach County Control Point "GATTO" Brass Disc in Concrete
 N 763501.6313
 E 926321.8927

Palm Beach County Control Point "GAST" Brass Disc in Concrete
 N 763538.3000
 E 931367.3500

S89°18'37"W (GRID) 3045.57'

N89°05'26"E (Plat) 00°00'15" Bearing
 N89°05'41"E (Grid) = Clockwise Rotation (Plat to Grid)

NORTH LINE OF
 ADDISON RESERVE PLAT FOUR
 PB 79, PGS 76-81



DETAIL A
 NOT TO SCALE

- LEGEND
- BE BUFFER EASEMENT
 - DE DRAINAGE EASEMENT
 - Δ CENTRAL (DELTA) ANGLE
 - L ARC LENGTH
 - LAE LIMITED ACCESS EASEMENT
 - LMAE LAKE MAINTENANCE ACCESS EASEMENT
 - LMC LAKE MAINTENANCE EASEMENT
 - PB PLAT BOOK
 - PG(S) PAGE(S)
 - R RADIUS
 - UE UTILITY EASEMENT
 - PRM PERMANENT REFERENCE MONUMENT
 - FRM FOUND PLS# 4763
 - PRM PERMANENT REFERENCE MONUMENT
 - SET PLS# 4763

THIS INSTRUMENT WAS PREPARED BY MARY HANNA CLODFELTER, P.S.M. IN THE OFFICES OF MOCK, ROOS & ASSOCIATES, INC., 5720 CORPORATE WAY, WEST PALM BEACH, FLORIDA 33407.

SHEET 4 OF 4

MOCK • ROOS
 ENGINEERS • SURVEYORS • PLANNERS

5720 Corporate Way, West Palm Beach, Florida 33407
 (561) 683-3113, fax 478-7248

ADDISON RESERVE REPLAT LAKE 19
 PART OF GLENEAGLES/POLO CLUB WEST P.U.D.
 SITUATE IN SECTION 28, TOWNSHIP 46 SOUTH, RANGE 42 EAST
 AND BEING A REPLAT OF TRACTS LK-19, L-19A THRU L-19F,
 AND A PORTION OF TRACT GC-4,
 "ADDISON RESERVE PLAT THREE" (PB 78, PGS 5-12) AND
 A PORTION OF TRACTS LK-19 AND L-19G,
 ALL OF TRACT GC-3 AND A PORTION OF TRACT GC-6
 "ADDISON RESERVE PLAT FOUR" (PB 79, PGS 76-81)
 PALM BEACH COUNTY, FLORIDA

ADDISON RESERVE
 REPLAT LAKE 19
 BOOK 83
 FLOOD ZONE
 QUAD# 52
 SE 80-215
 TAZ 478
 PUD NAME Addison Reserve

ADDIRP42.dwg 8-25-98 7:50:22 pm EST

REV: 07-28-98
 CAD FILE: TWKCAD\ADDIRP42