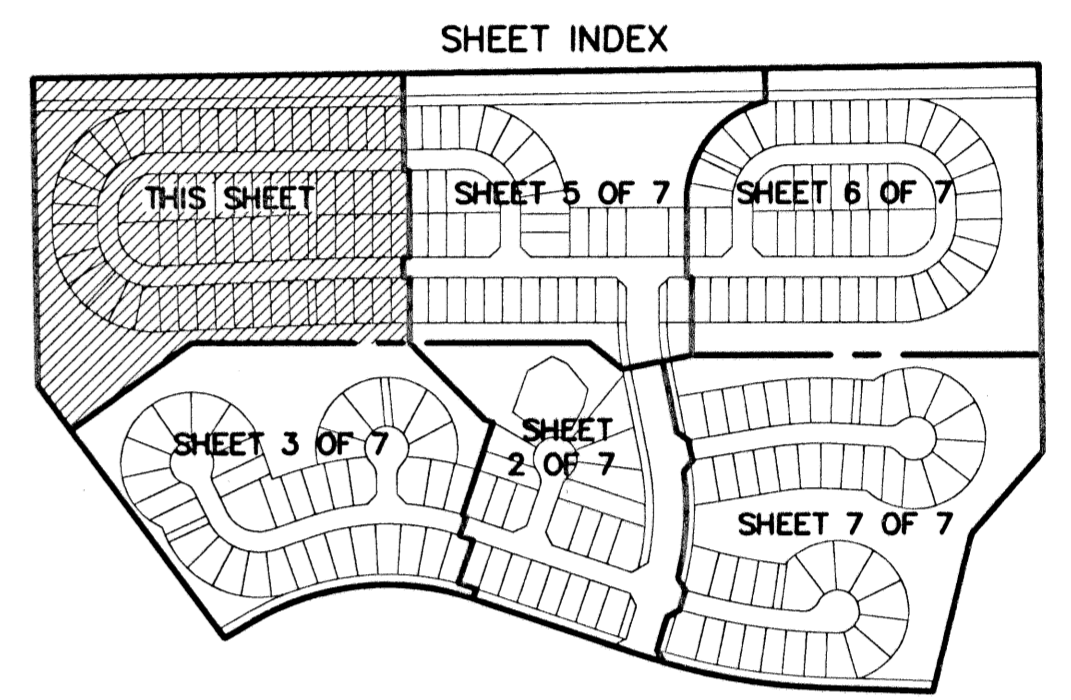
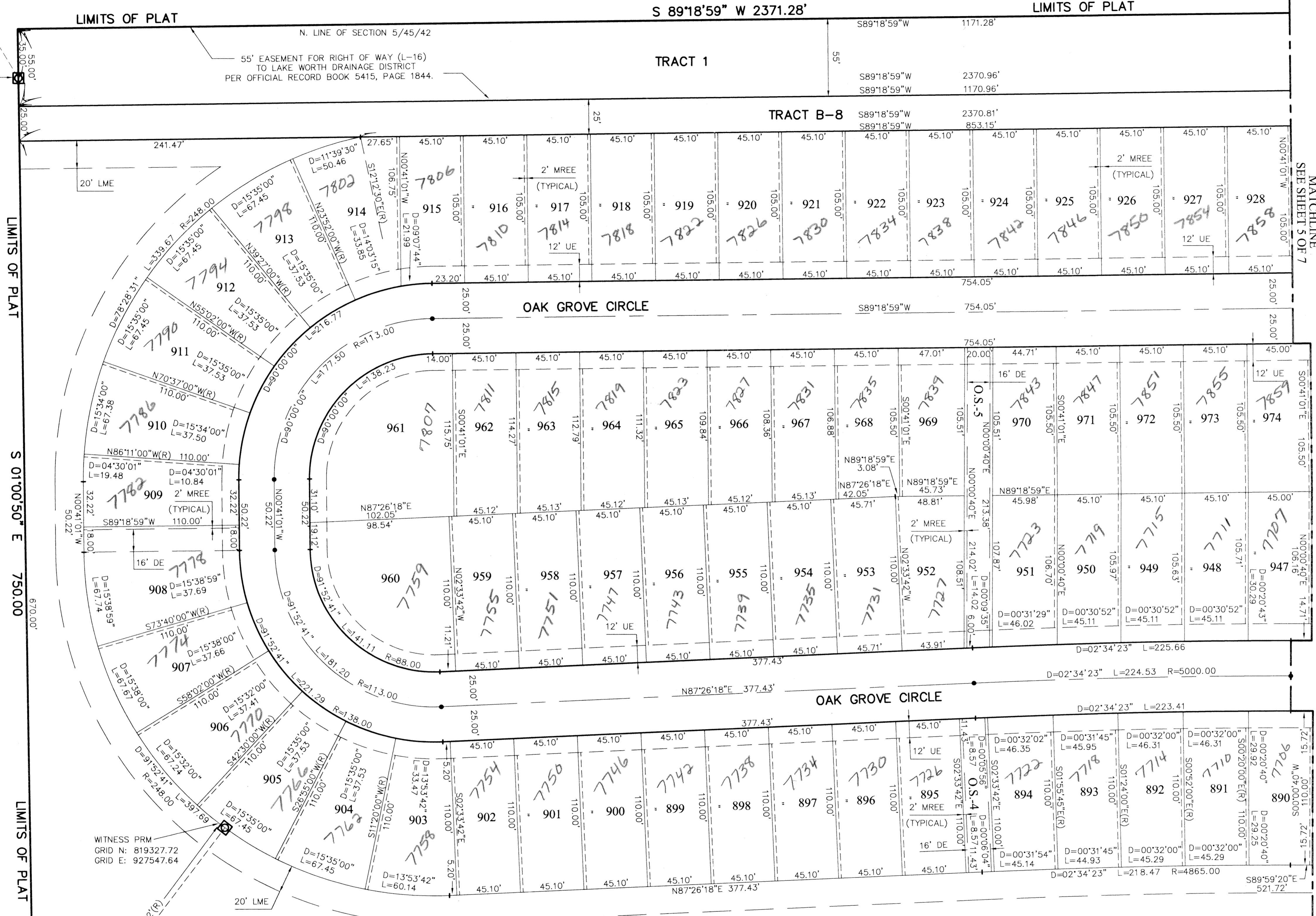


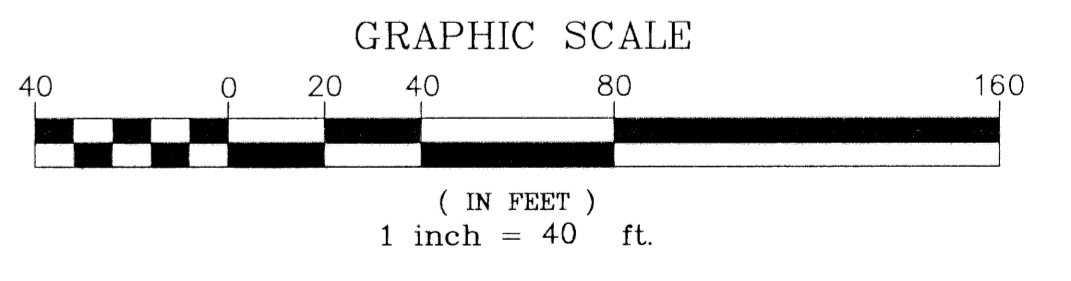
SOUTHWEST SECTION CORNER
SECTION 33, TOWNSHIP 44
SOUTH, RANGE 42 EAST
GRID N: 821147.12
GRID E: 926621.10

LOT 4, HIATUS TRACT 40
PALM BEACH FARMS CO. PLAT No. 13
P.B. 6, PAGES 98-99



- LEGEND:**
- ⊙ = PERMANENT REFERENCE MONUMENT "P.L.S. 4828"
 - = PERMANENT CONTROL POINT "P.C.P. 4828"
 - R = RADIUS
 - L = ARC LENGTH
 - Δ = DELTA (CENTRAL ANGLE)
 - PC = POINT OF CURVATURE
 - PT = POINT OF TANGENCY
 - PSM = PROFESSIONAL SURVEYOR & MAPPER
 - PLS = PROFESSIONAL LAND SURVEYOR
 - UE = UTILITY EASEMENT
 - DE = DRAINAGE EASEMENT
 - LAE = LIMITED ACCESS EASEMENT
 - LMAE = LAKE MAINTENANCE ACCESS EASEMENT
 - LME = LAKE MAINTENANCE EASEMENT
 - N = NORTHING (GRID)
 - E = EASTING (GRID)
 - C = CALCULATED
 - R = RADIAL
 - T = TANGENT
 - MREE = MAINTENANCE AND ROOF EAVE EASEMENT

NOTE: POSITION OF SECTION CORNERS
CALCULATED BASED ON PALM BEACH
COUNTY SURVEY DEPARTMENT VALUES.



SMITH DAIRY WEST P.U.D.-PLAT No. 8
 BEING A REPLAT OF PART OF BLOCK 38 OF PALM BEACH FARMS
 COMPANY PLAT No. 3, AS RECORDED IN PLAT BOOK 2, PAGES
 45 THROUGH 54 OF THE PUBLIC RECORDS OF PALM BEACH COUNTY, FLORIDA
 IN PART OF SECTION 4, TOWNSHIP 45 SOUTH, RANGE 42 EAST,
 SHEET 4 OF 7
 MARCH 1998

WATER MANAGEMENT TRACT No. 10
TO BE MAINTAINED BY SMITH FARM MASTER ASSOCIATION, INC.

WITNESS PRM
GRID N: 819861.48
GRID E: 927400.32

WITNESS PRM
GRID N: 819327.72
GRID E: 927547.64

SMITH DAIRY WEST P.U.D. - PLAT No. 6
PLAT BOOK 92, PAGES 34-37

SUBDIVISION SMITH DAIRY WEST
 BOOK 93
 PAGE 74
 FLOOD MAP #170A
 ZONING FUD
 QUAD # 44
 SE 86-706
 TAZ 442
 PUD NAME Smith Dairy West

SCALE: 1"=40'
 DATE: MAR. 1998

NMI NICK MILLER, INC.
 Surveying & Mapping Consultants

SMITH DAIRY WEST P.U.D.- PLAT No. 8

2560 RCA Blvd. Suite 105
 Palm Beach Gardens, Florida 33410
 (561) 627-5200
 D.B.P.R. Business License No. 4318

DRAWING NUMBER
 94014DZ