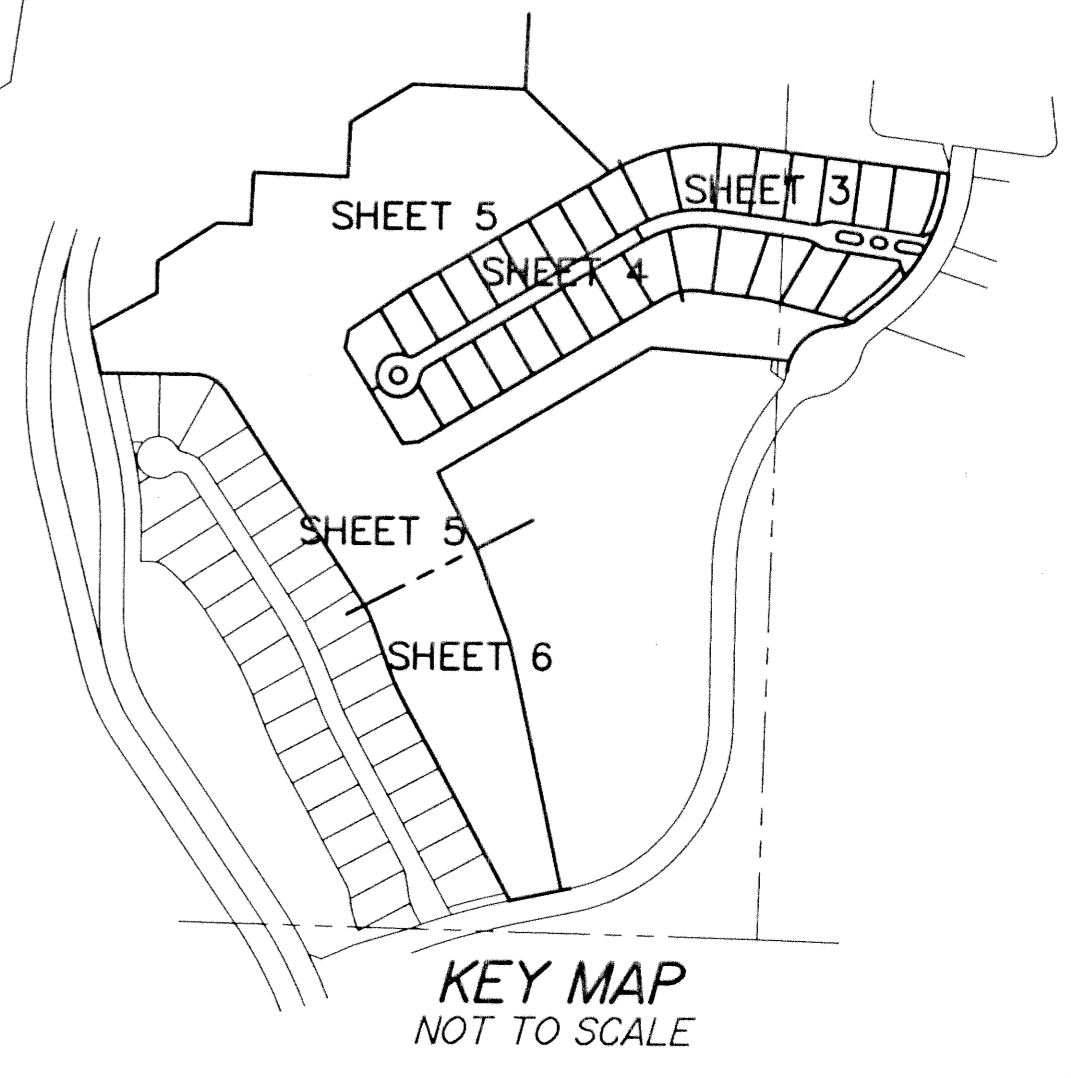
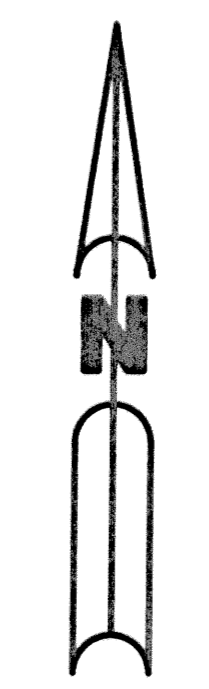
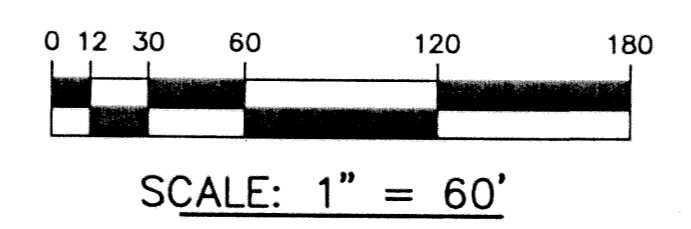
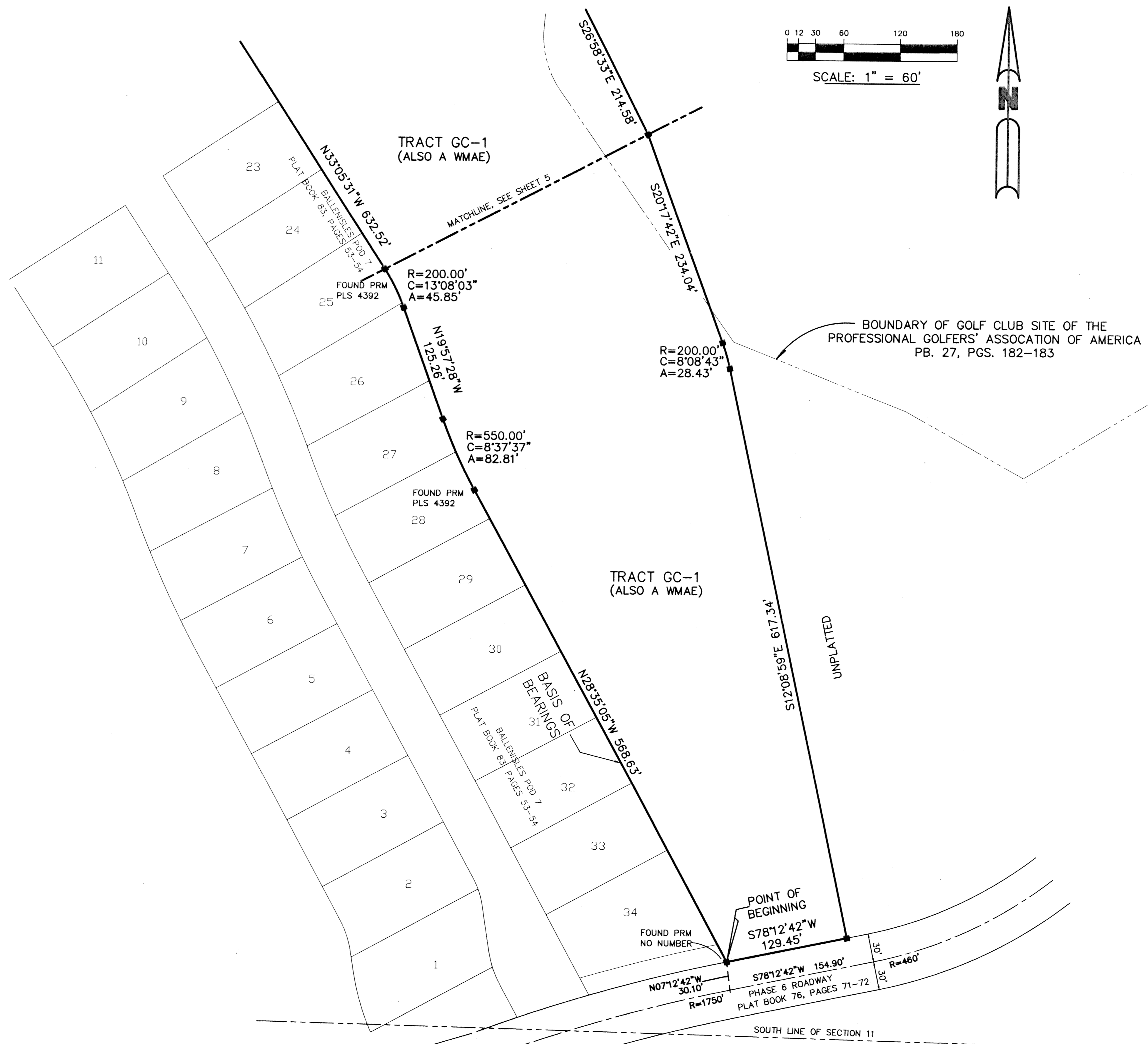


# BALLENISLES Pod 8b

BEING A PORTION OF SECTIONS 11 AND 12, TOWNSHIP 42 SOUTH, RANGE 42 EAST, PALM BEACH COUNTY, FLORIDA, CITY OF PALM BEACH GARDENS AND A REPLAT OF A PORTION OF THE PLAT OF BOUNDARY OF GOLF CLUB SITE OF THE PROFESSIONAL GOLFERS' ASSOCIATION OF AMERICA, RECORDED IN PLAT BOOK 27, PAGES 182 AND 183, OF THE PUBLIC RECORDS OF PALM BEACH COUNTY, FLORIDA

SHEET 6 OF 6

NOVEMBER 1998



SUBDIVISION BALLENISLES Pod 8b  
 BOOK 83 PAGE 190  
 FLOOD ZONE - FLOOD MAP # -  
 QUAD # - ZONING -  
 SE - ZIP CODE -  
 TAX # 45  
 PUD NAME City of Palm Beach Gardens

**KESHAVARZ & ASSOCIATES, INC.**  
 THIS INSTRUMENT WAS PREPARED BY CHARLES H. ANDERSON  
 IN THE OFFICES OF KESHAVARZ & ASSOCIATES, INC.  
 1280 N. CONGRESS AVENUE, SUITE 206  
 WEST PALM BEACH, FLORIDA 33409  
 (407) 689-8600 / FAX 689-7476  
 LICENSED BUSINESS No. 4897