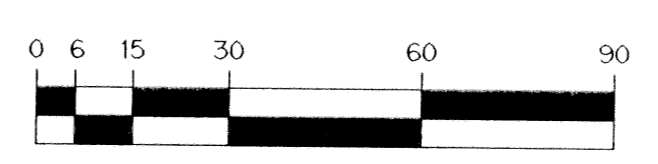
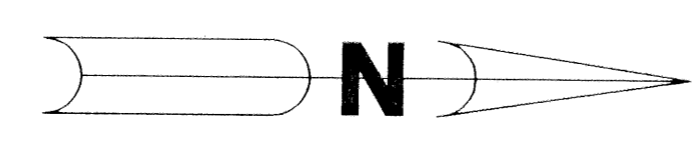


CHARLESTON COURT AT ABACOA

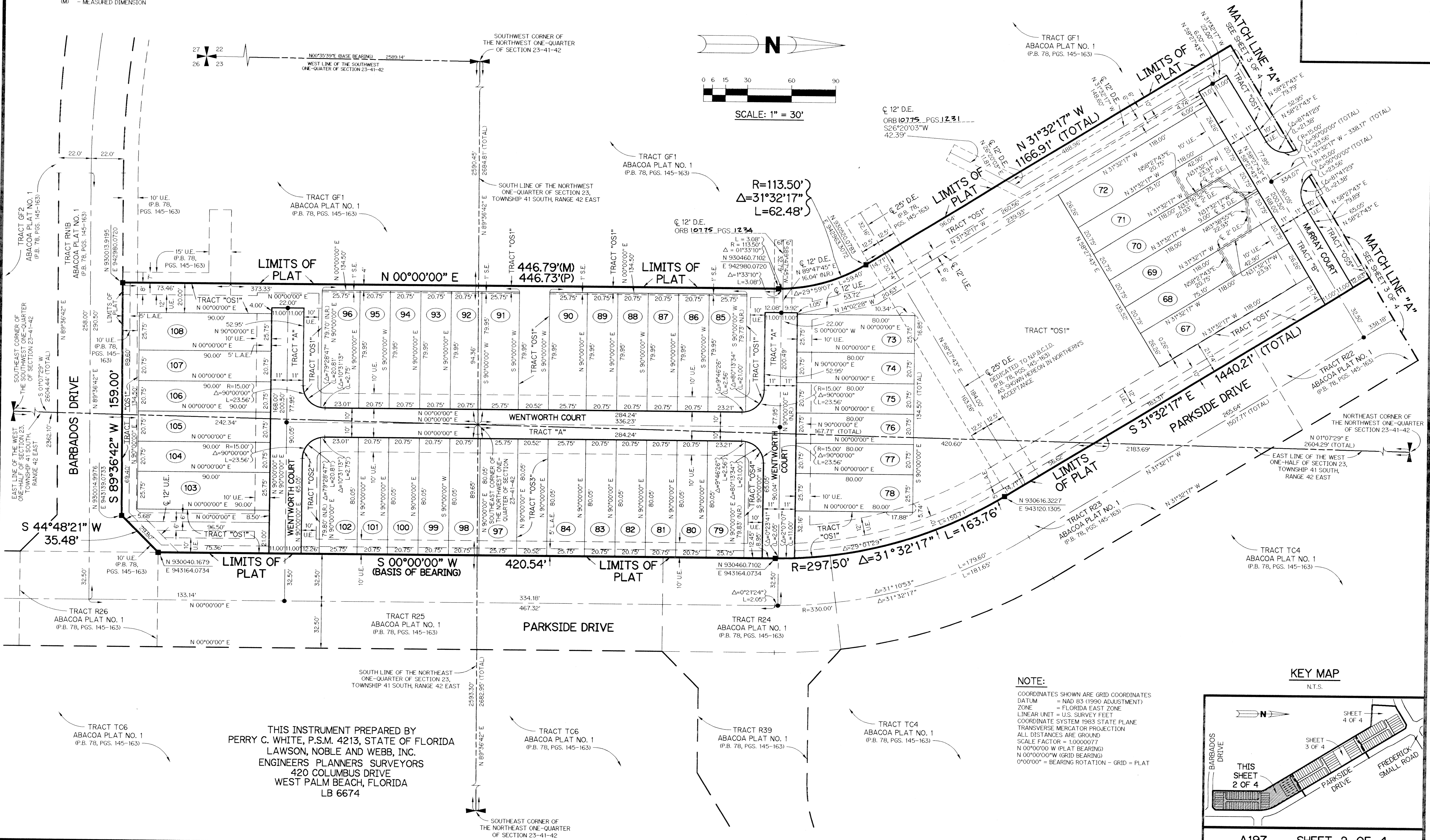
BEING A REPLAT OF ALL OF TRACT RD1C ACCORDING TO THE PLAT OF ABACOA PLAT NO. 1, AS RECORDED IN PLAT BOOK 78, PAGES 145 THROUGH 163, INCLUSIVE, OF THE PUBLIC RECORDS OF PALM BEACH COUNTY, FLORIDA. LYING IN SECTION 23, TOWNSHIP 41 SOUTH, RANGE 42 EAST, TOWN OF JUPITER, PALM BEACH COUNTY, FLORIDA

SHEET 2 OF 4 NOVEMBER, 1998

- LEGEND:**
- - SET PERMANENT REFERENCE MONUMENT, PSM #4213
 - - SET PERMANENT CONTROL POINT, PSM #4213
 - Δ - DELTA ANGLE
 - BT - BUFFER TRACT
 - - CENTERLINE
 - D.B. - DEED BOOK
 - D.E. - DRAINAGE EASEMENT
 - L - ARC LENGTH
 - OS - OPEN SPACE TRACT
 - O.R.B. - OFFICIAL RECORD BOOK
 - P.B. - PLAT BOOK
 - P.G.S. - PAGES
 - R - RADIUS
 - S.E. - SIDEWALK EASEMENT
 - U.E. - UTILITY EASEMENT
 - L.A.E. - LIMITED ACCESS EASEMENT
 - N 905258.2326 - DENOTES STATE PLANE COORDINATES
 - NFB/CID - NORTHERN PALM BEACH COUNTY IMPROVEMENT DISTRICT
 - (P) - PLAT DIMENSION
 - (M) - MEASURED DIMENSION



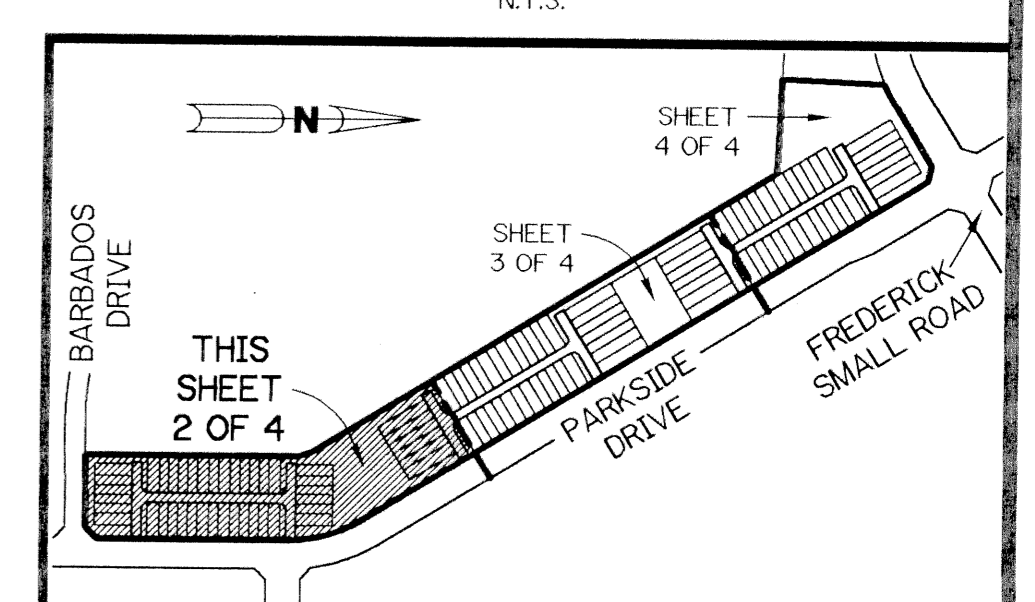
SCALE: 1" = 30'



NOTE:

COORDINATES SHOWN ARE GRID COORDINATES
 DATUM = NAD 83 (1990 ADJUSTMENT)
 ZONE = FLORIDA EAST ZONE
 LINEAR UNIT = U.S. SURVEY FEET
 COORDINATE SYSTEM 1983 STATE PLANE
 TRANSVERSE MERCATOR PROJECTION
 ALL DISTANCES ARE GROUND
 SCALE FACTOR = 1.0000077
 N 00°00'00" W (PLAT BEARING)
 N 00°00'00" W (GRID BEARING)
 0°00'00" = BEARING ROTATION - GRID = PLAT

KEY MAP



THIS INSTRUMENT PREPARED BY
 PERRY C. WHITE, P.S.M. 4213, STATE OF FLORIDA
 LAWSON, NOBLE AND WEBB, INC.
 ENGINEERS PLANNERS SURVEYORS
 420 COLUMBUS DRIVE
 WEST PALM BEACH, FLORIDA
 LB 6674

SUBDIVISION
 BOOK 04
 FLOOD MAP #
 ZONING
 QUID #
 SE 27
 TAZ - 27
 PUD NAME Town of Jupiter