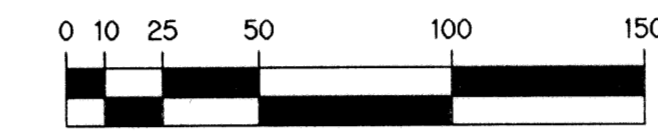


A PLANNED UNIT DEVELOPMENT

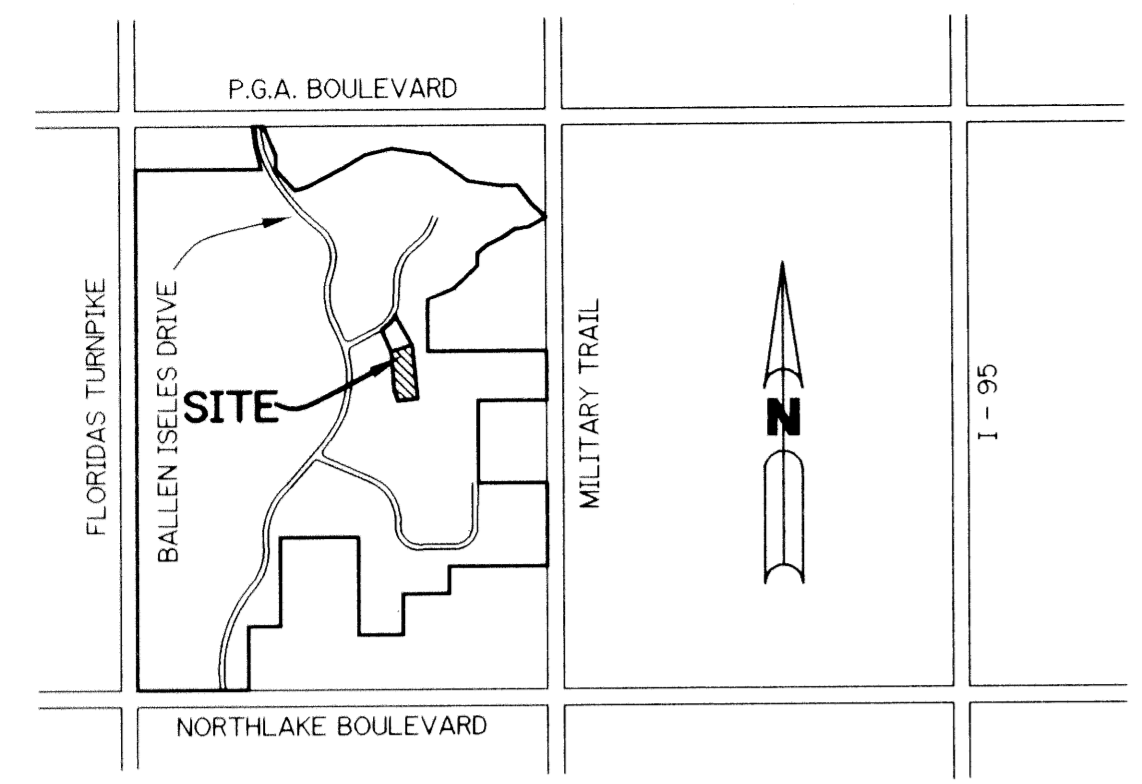
# BALLENISLES - PARCEL 6B REPLAT

BEING A REPLAT OF LOTS 5 THROUGH 17 INCLUSIVE, TRACTS "C", "D", "E", "G", "N", "O", AND "P" OF BALLENISLES - PARCEL 6B, AS RECORDED IN PLAT BOOK 76, PAGES 73 & 74, PALM BEACH COUNTY PUBLIC RECORDS, AND LYING IN SECTIONS 13, AND 14, TOWNSHIP 42 SOUTH, RANGE 42 EAST, CITY OF PALM BEACH GARDENS, PALM BEACH COUNTY, FLORIDA

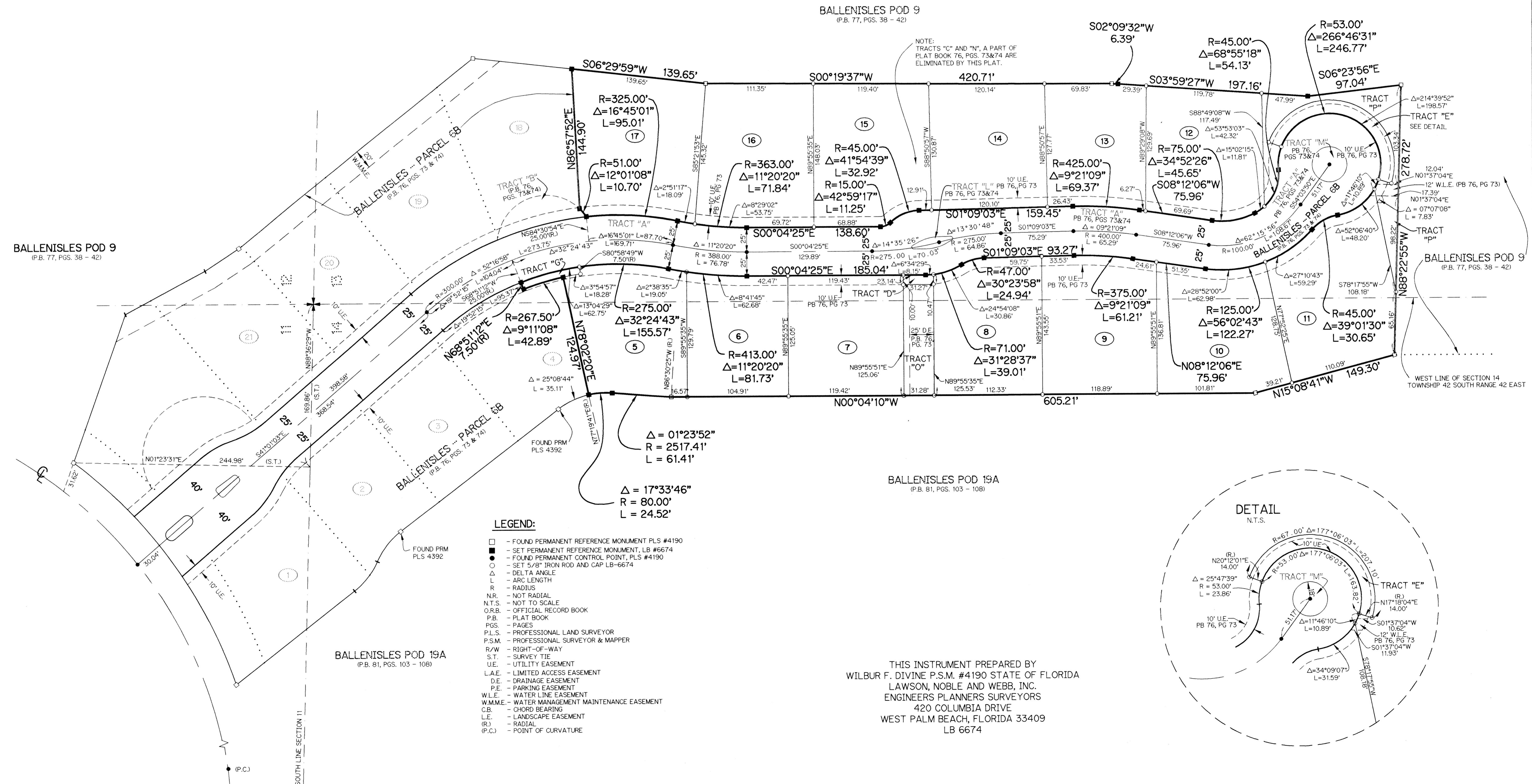
SHEET 2 OF 2 OCTOBER, 1998



SCALE: 1" = 50'



LOCATION MAP  
N.T.S.



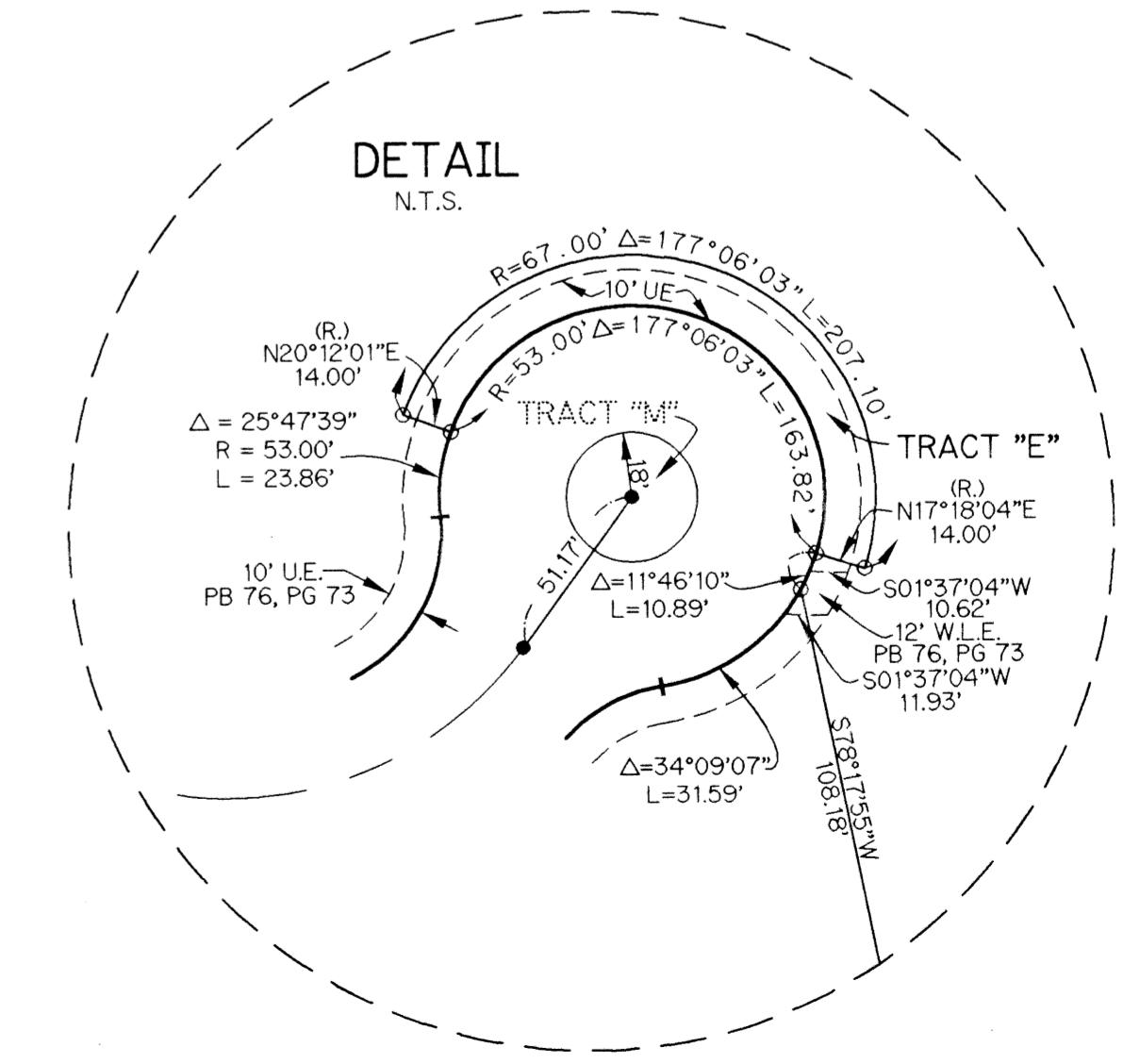
BALLENISLES POD 9  
(P.B. 77, PGS. 38 - 42)

BALLENISLES POD 9  
(P.B. 77, PGS. 38 - 42)

BALLENISLES POD 19A  
(P.B. 81, PGS. 103 - 108)

**LEGEND:**

- - FOUND PERMANENT REFERENCE MONUMENT PLS #4190
- - SET PERMANENT REFERENCE MONUMENT, LB #6674
- - FOUND PERMANENT CONTROL POINT, PLS #4190
- - SET 5/8" IRON ROD AND CAP LB-6674
- Δ - DELTA ANGLE
- L - ARC LENGTH
- R - RADIUS
- N.R. - NOT RADIAL
- N.T.S. - NOT TO SCALE
- O.R.B. - OFFICIAL RECORD BOOK
- P.B. - PLAT BOOK
- PGS. - PAGES
- P.L.S. - PROFESSIONAL LAND SURVEYOR
- P.S.M. - PROFESSIONAL SURVEYOR & MAPPER
- R/W - RIGHT-OF-WAY
- S.T. - SURVEY TIE
- U.E. - UTILITY EASEMENT
- L.A.E. - LIMITED ACCESS EASEMENT
- D.E. - DRAINAGE EASEMENT
- P.E. - PARKING EASEMENT
- W.L.E. - WATER LINE EASEMENT
- W.M.M.E. - WATER MANAGEMENT MAINTENANCE EASEMENT
- C.B. - CHORD BEARING
- L.E. - LANDSCAPE EASEMENT
- (R) - RADIAL
- (P.C.) - POINT OF CURVATURE



THIS INSTRUMENT PREPARED BY  
WILBUR F. DIVINE P.S.M. #4190 STATE OF FLORIDA  
LAWSON, NOBLE AND WEBB, INC.  
ENGINEERS PLANNERS SURVEYORS  
420 COLUMBIA DRIVE  
WEST PALM BEACH, FLORIDA 33409  
LB 6674

SUBDIVISION: BalLENISLES  
 BOOK: 84  
 PAGE: 47  
 FLOOD ZONE: -  
 FLOODING: -  
 ZONING: -  
 QUAD#: -  
 ZIP CODE: -  
 S.T.: -  
 TAZ: 95  
 PUB NAME: City of Palm Beach Gardens