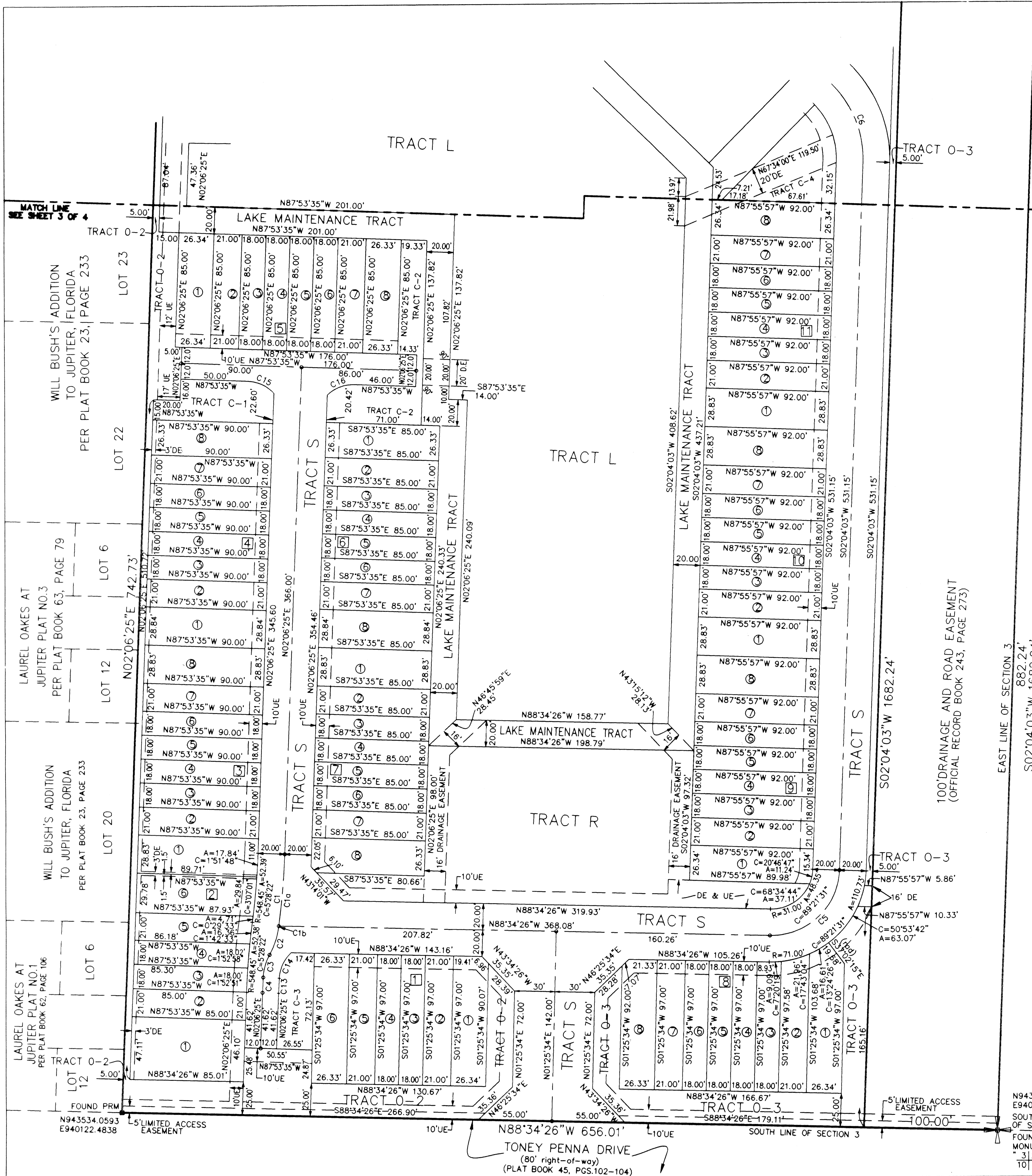
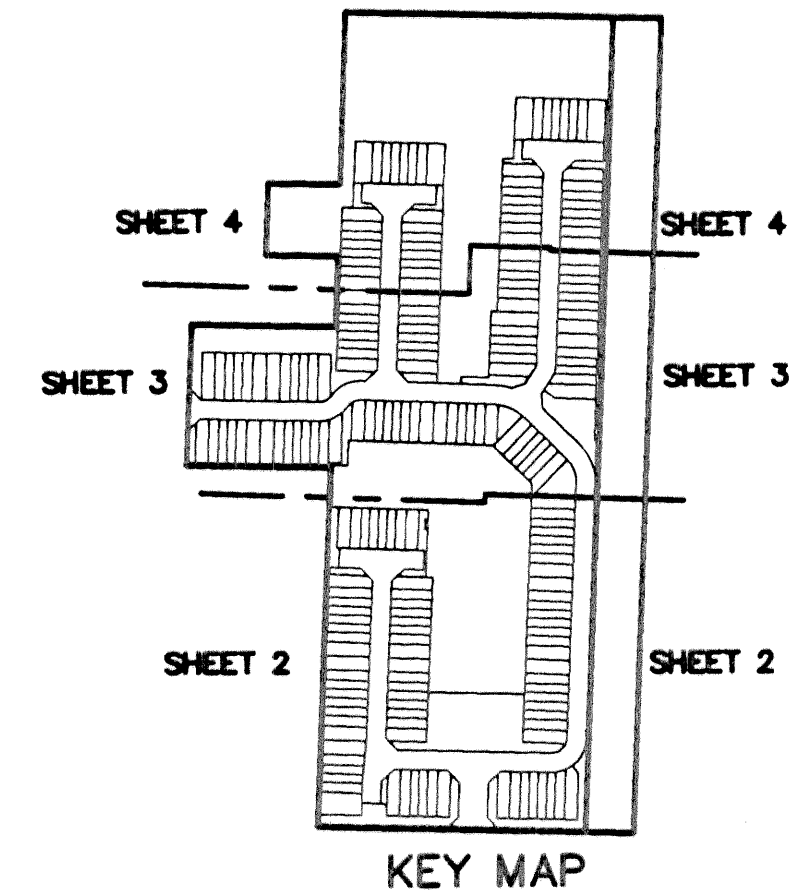
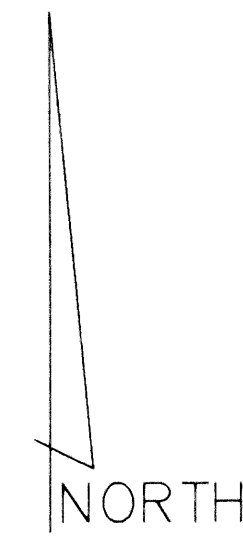
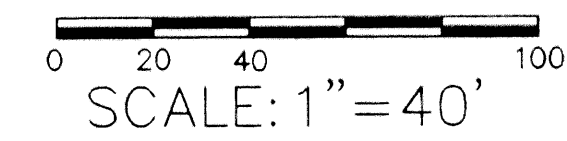


# TIMBERWALK PUD

BEING A REPLAT OF LOTS 7, 8, AND 9,  
PLAT OF TARAGRAY, RECORDED IN  
PLAT BOOK 66, PAGES 112 THROUGH 114  
LYING IN SECTION 3, TOWNSHIP 41 SOUTH,  
RANGE 42 EAST, TOWN OF JUPITER,  
PALM BEACH COUNTY, FLORIDA

OCTOBER 1998

SHEET 2 OF 4



Curve	Radius	Central Angle	Length	Chord	Bearing
C1	568.45'	5'33'01"	55.07'	55.04'	S04°52'55"W
C1a	568.45'	5'29'43"	54.52'	54.50'	S04°51'16"W
C1b	568.45'	0'03'18"	0.55'	0.55'	S07°37'47"W
C2	62.00'	20°41'37"	22.39'	22.27'	S18°00'14"W
C3	40.00'	25°01'43"	17.47'	17.33'	S15°50'11"W
C4	536.45'	1'12'54"	11.38'	11.38'	S02°42'52"W
C5	51.00'	89°21'31"	79.54'	71.72'	N46°44'49"E
C6	78.00'	47°32'13"	64.71'	62.87'	S21°42'04"E
C7	118.00'	42°25'25"	87.37'	85.39'	N66°40'53"E
C8	118.00'	10°29'09"	21.59'	21.57'	S50°42'45"E
C9	118.00'	31°56'16"	65.78'	64.93'	S71°55'27"E
C10	50.00'	57°55'11"	50.54'	48.42'	S63°08'50"W
C11	50.00'	56°58'49"	49.72'	47.70'	N62°40'39"E
C12	50.00'	31°58'38"	27.91'	27.54'	S18°03'22"W
C13	524.45'	0'12'54"	11.12'	11.12'	N02°42'52"E
C14	28.00'	43°41'20"	21.35'	20.84'	N25°09'59"E
C15	28.00'	45°35'05"	22.28'	21.69'	N65°06'03"W
C16	28.00'	45°35'05"	22.28'	21.69'	N69°18'53"E

N943521.3860  
E940778.4010  
SOUTHEAST CORNER  
OF SECTION 3  
FOUND CONCRETE  
MONUMENT STAMPED  
3/12  
10/11

**Messler & Associates**  
CONSULTING ENGINEERS  
11211 Prosperity Farms Rd., Suite C-301, Palm Beach Gardens, Florida 33410  
Phone (561) 627-2226 Fax (561) 624-1569  
LICENSED BUSINESS No.3616

THIS INSTRUMENT WAS PREPARED BY  
ROBERT BLASZYK IN THE OFFICES OF  
MESSLER & ASSOCIATES  
11211 PROSPERITY FARMS ROAD  
SUITE C301  
PALM BEACH GARDENS, FLORIDA

SUBDIVISION TimberWalk  
BOOK PAGE 72  
FLOOD MAP#  
FLOOD ZONE  
ZONING  
DATE 10/12/98  
TAX 242  
FILED NAME Town of Jupiter