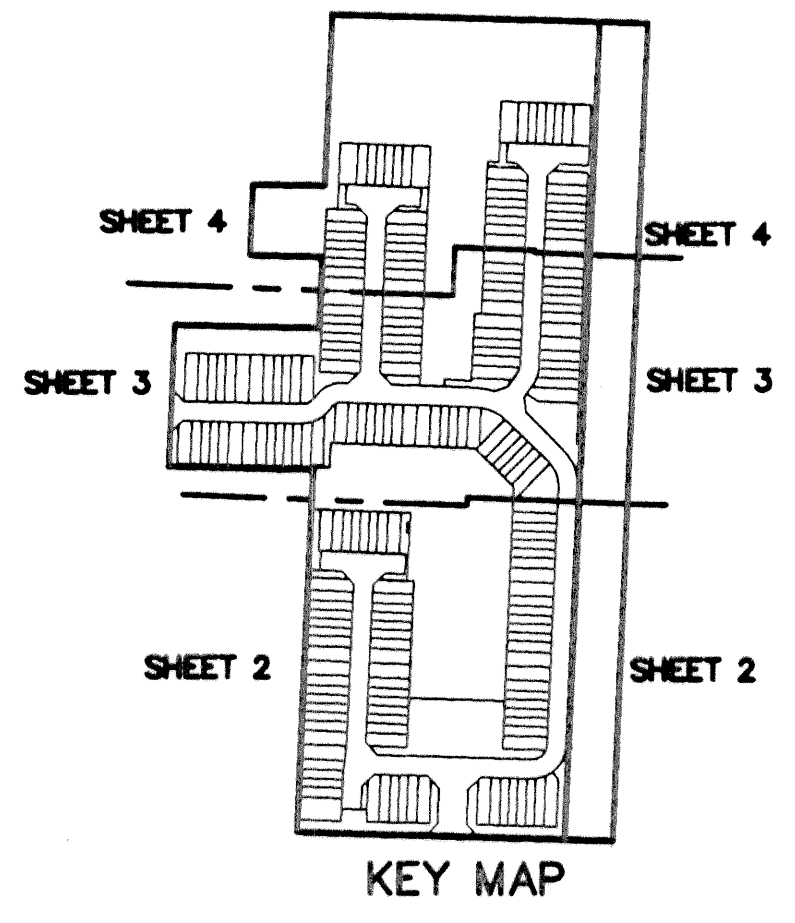
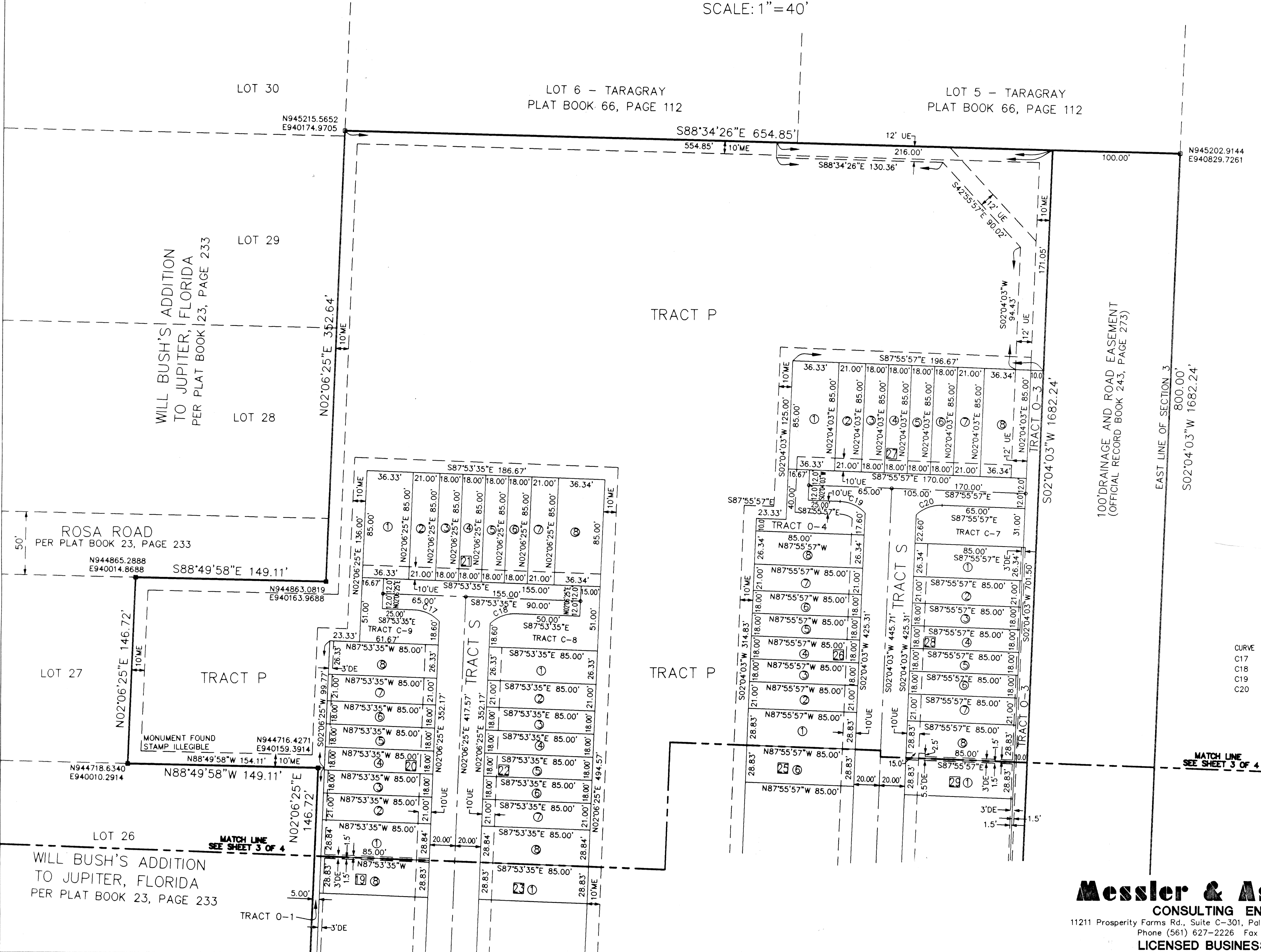


# TIMBERWALK PUD

BEING A REPLAT OF LOTS 7, 8, AND 9, PLAT OF TARAGRAY,  
RECORDED IN PLAT BOOK 66, PAGES 112 THROUGH 114  
LYING IN SECTION 3, TOWNSHIP 41 SOUTH, RANGE 42 EAST,  
TOWN OF JUPITER, PALM BEACH COUNTY, FLORIDA

NORTH  
OCTOBER 1998  
SCALE: 1" = 40'  
SHEET 4 OF 4



CURVE	RADIUS	CENTRAL ANGLE	LENGTH	CHORD BEARING	DISTANCE
C17	28.00'	45°35'05"	22.28'	N 65°06'03" W	21.69'
C18	28.00'	45°35'05"	22.28'	N 69°18'53" E	21.69'
C19	28.00'	45°35'05"	22.28'	S 65°08'25" E	21.69'
C20	28.00'	45°35'05"	22.28'	N 69°16'31" E	21.69'

**Messler & Associates**  
CONSULTING ENGINEERS  
11211 Prosperity Farms Rd., Suite C-301, Palm Beach Gardens, Florida 33410  
Phone (561) 627-2226 Fax (561) 624-1569  
LICENSED BUSINESS No.3616

THIS INSTRUMENT WAS PREPARED BY  
ROBERT BLASZYK IN THE OFFICES OF  
MESSLER & ASSOCIATES  
11211 PROSPERITY FARMS ROAD  
SUITE C301  
PALM BEACH GARDENS, FLORIDA

TOWN OF JUPITER  
PAGE 74  
FLOOD MAP# -  
ZONING -  
SHEET# -  
TAX - 842  
PUD NAME - Town of Jupiter