

FIDELITY FEDERAL AT JOG AND HYPOLUXO M.U.P.D.

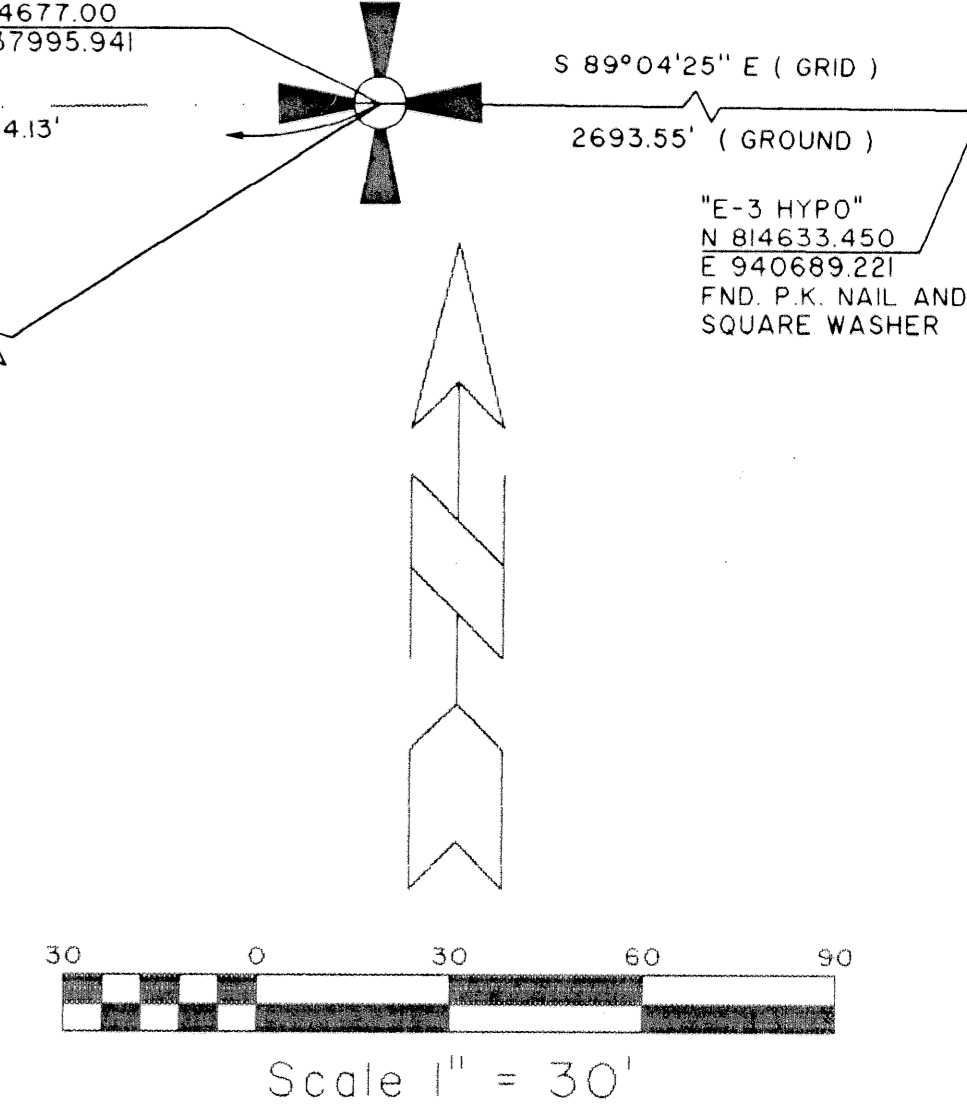
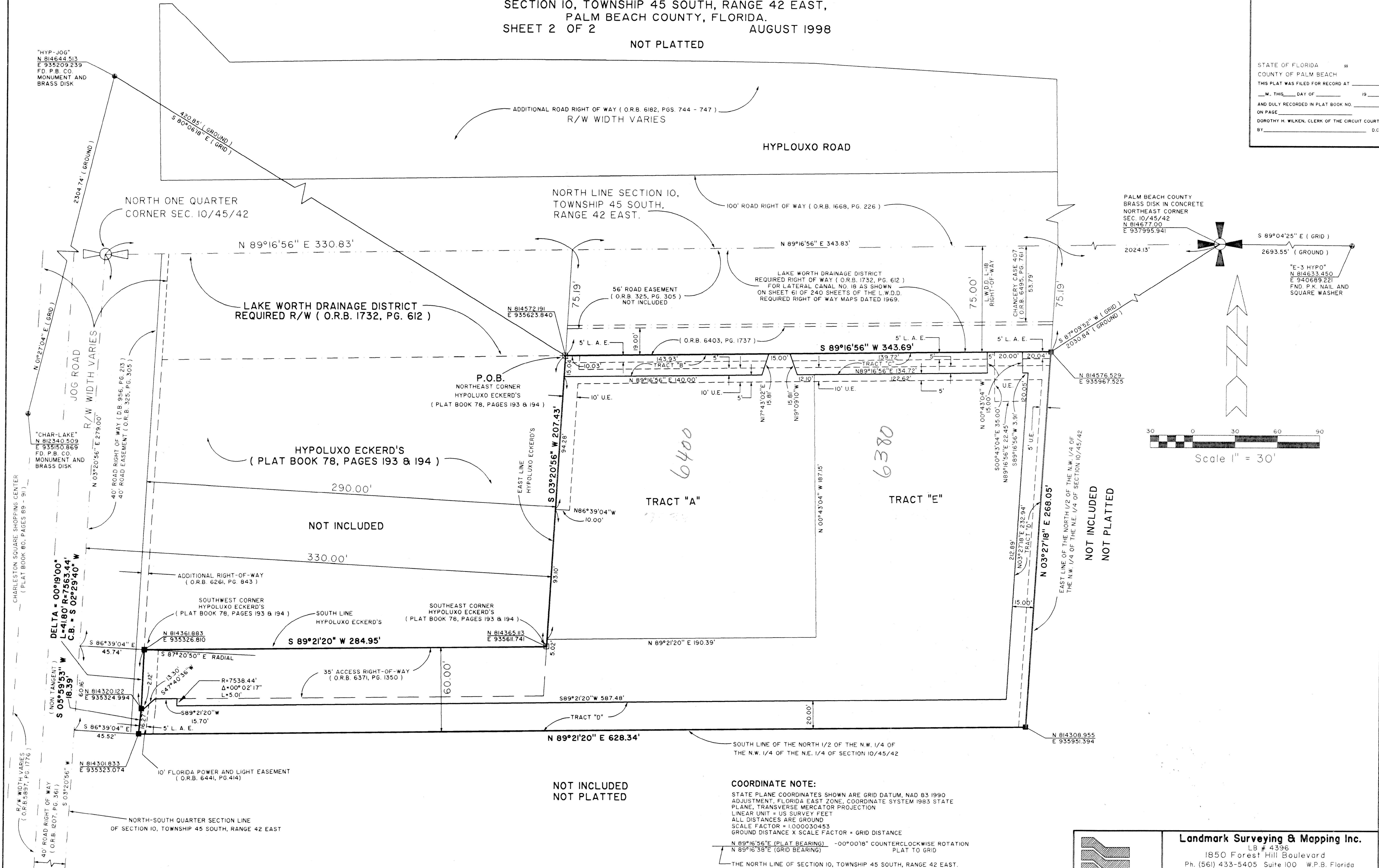
5714-000

98

LYING IN THE NORTHEAST ONE-QUARTER OF SECTION 10, TOWNSHIP 45 SOUTH, RANGE 42 EAST, PALM BEACH COUNTY, FLORIDA.
SHEET 2 OF 2 AUGUST 1998

NOT PLATTED

STATE OF FLORIDA
COUNTY OF PALM BEACH
THIS PLAT WAS FILED FOR RECORD AT
M. THIS DAY OF 19
AND DULY RECORDED IN PLAT BOOK NO.
ON PAGE
DOROTHY H. WILKEN, CLERK OF THE CIRCUIT COURT
BY: D.C.



COORDINATE NOTE:
STATE PLANE COORDINATES SHOWN ARE GRID DATUM, NAD 83 1990 ADJUSTMENT, FLORIDA EAST ZONE, COORDINATE SYSTEM 1983 STATE PLANE, TRANSVERSE MERCATOR PROJECTION
LINEAR UNIT = US SURVEY FEET
ALL DISTANCES ARE GROUND
SCALE FACTOR = 1.000030453
GROUND DISTANCE X SCALE FACTOR = GRID DISTANCE
N 89°16'56"E (PLAT BEARING) -00°00'18" COUNTERCLOCKWISE ROTATION PLAT TO GRID
N 89°16'38"E (GRID BEARING)
-THE NORTH LINE OF SECTION 10, TOWNSHIP 45 SOUTH, RANGE 42 EAST.

STATIONING
FIDELITY FEDERAL
PAGE 98
ELECTRIC MAP # 105A
ZONING CC
COUNTY 34
SHEET 2A-131
TAX 440
JOB NAME Fidelity Federal

1/27/97

Landmark Surveying & Mapping Inc.
LB # 4396
1850 Forest Hill Boulevard
Ph. (561) 433-5405 Suite 100 W.P.B. Florida

FIDELITY FEDERAL AT JOG AND HYPOLUXO M.U.P.D.