

0717-002

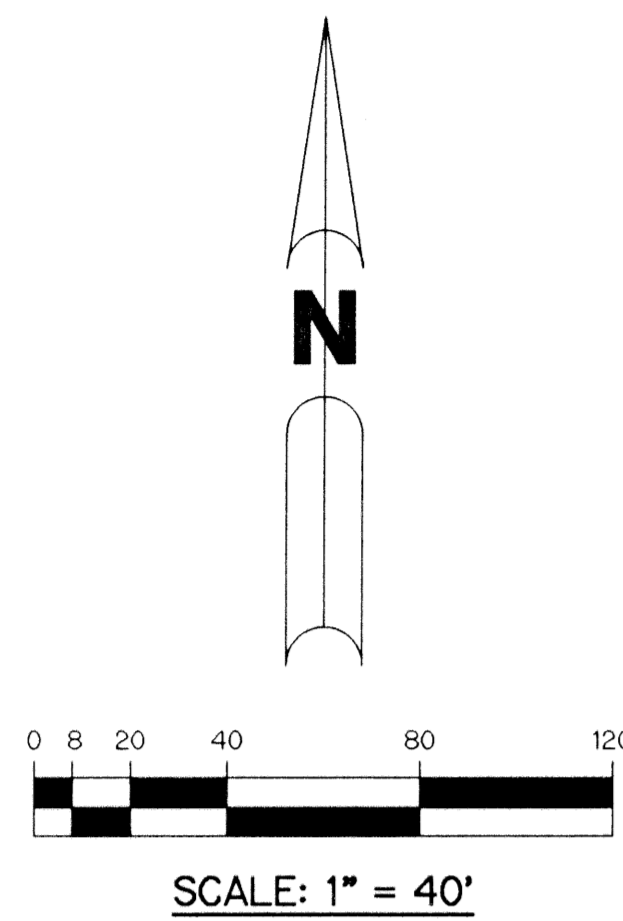
VALENCIA ISLES PLANNED UNIT DEVELOPMENT

VALENCIA ISLES - PLAT TWO

BEING A REPLAT OF A PORTION OF TRACT "Q" ACCORDING TO THE PLAT OF VALENCIA ISLES - PLAT ONE, AS RECORDED IN PLAT BOOK 84, PAGES 3 THROUGH 17, INCLUSIVE, OF THE PUBLIC RECORDS OF PALM BEACH COUNTY, FLORIDA. LYING IN SECTIONS 33 AND 34, TOWNSHIP 45 SOUTH, RANGE 42 EAST.

SHEET 4 OF 8 JANUARY, 1999

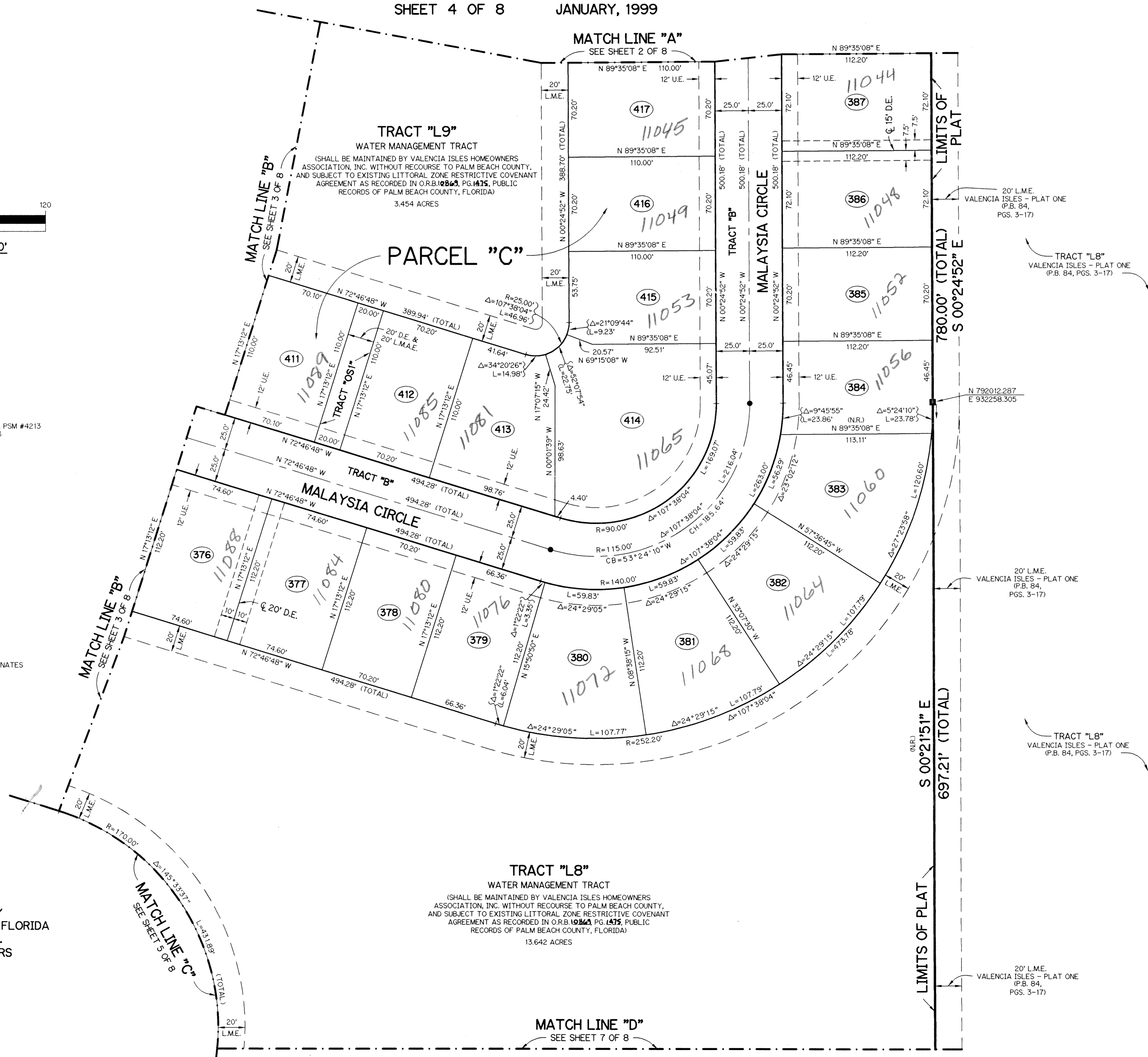
102



LEGEND:

- - SET PERMANENT REFERENCE MONUMENT, PSM #4213
- - PERMANENT CONTROL POINT, PSM #4213
- Δ - DELTA ANGLE
- B.E. - BUFFER EASEMENT
- CL - CENTERLINE
- D.B. - DEED BOOK
- D.E. - DRAINAGE EASEMENT
- L - ARC LENGTH
- L.A.E. - LIMITED ACCESS EASEMENT
- L.M.A.E. - LAKE MAINTENANCE ACCESS EASEMENT
- L.M.E. - LAKE MAINTENANCE EASEMENT
- L.W.D.D. - LAKE WORTH DRAINAGE DISTRICT
- N.R. - NOT RADIAL
- N.T.S. - NOT TO SCALE
- O.E. - OVERHANG EASEMENT
- O.R.B. - OFFICIAL RECORD BOOK
- P.B. - PLAT BOOK
- P.G.S. - PAGES
- P.S.M. - PROFESSIONAL SURVEYOR AND MAPPER
- R - RADIUS
- R/W - RIGHT-OF-WAY
- S.D.E. - SWALE DRAINAGE EASEMENT
- S.T. - SURVEY TIE
- U.E. - UTILITY EASEMENT
- V.I.-1 - VALENCIA ISLES - PLAT ONE PER P.B. 84, PGS. 3-17
- CB - CHORD BEARING
- CH - CHORD

N 737648.0171 - DENOTES STATE PLANE COORDINATES
E 906258.2326

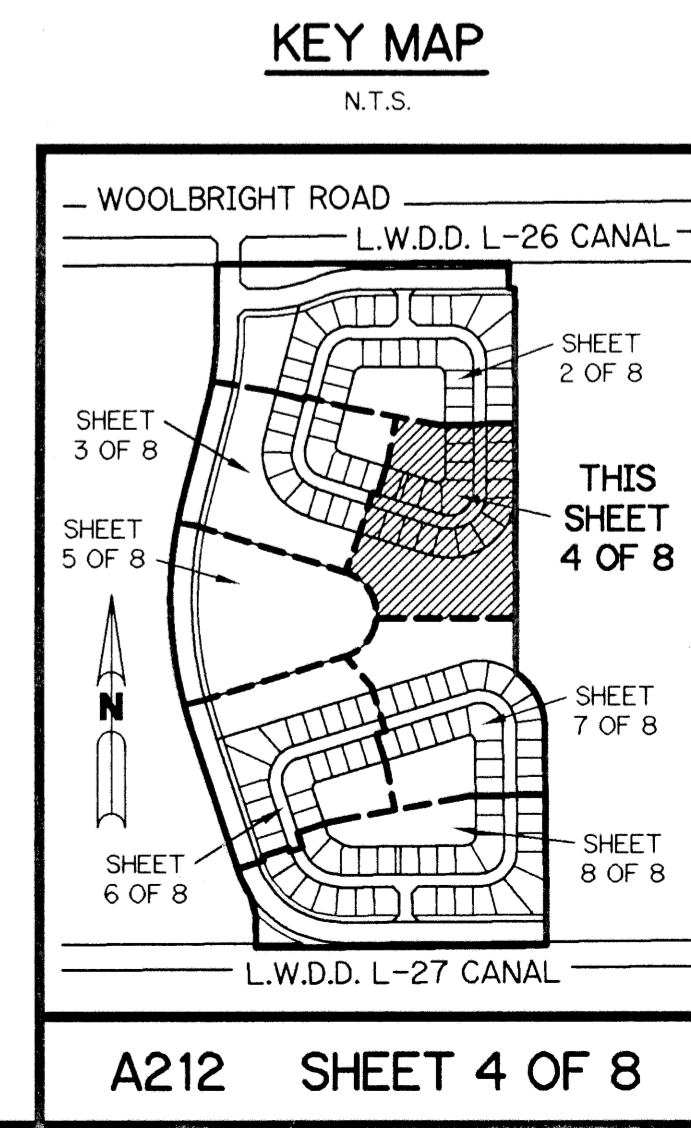


NOTE:

COORDINATES SHOWN ARE GRID COORDINATES
 DATUM = NAD 83 (1990 ADJUSTMENT)
 ZONE = FLORIDA EAST ZONE
 LINEAR UNIT = U.S. SURVEY FEET
 COORDINATE SYSTEM = 1983 STATE PLANE TRANSVERSE MERCATOR PROJECTION
 ALL DISTANCES ARE GROUND
 SCALE FACTOR = 1.0000285
 N 89°37'43" E (PLAT BEARING)
 N 89°37'43" E (GRID BEARING) (PLAT = GRID)

SUBDIVISION PAGE 103
 BOOK 84 ELOG MAP #200A
 PLAT #84 ZONING PUD
 (CASH) 50+35 ZIP CODE 33457
 (CASH) 97-74
 TAX 452 Milin Farm
 P.O. BOX 444

THIS INSTRUMENT PREPARED BY
 PERRY C. WHITE, P.S.M. 4213, STATE OF FLORIDA
 LAWSON, NOBLE AND WEBB, INC.
 ENGINEERS PLANNERS SURVEYORS
 420 COLUMBIA DRIVE
 WEST PALM BEACH, FLORIDA
 LB-6674



A212 SHEET 4 OF 8