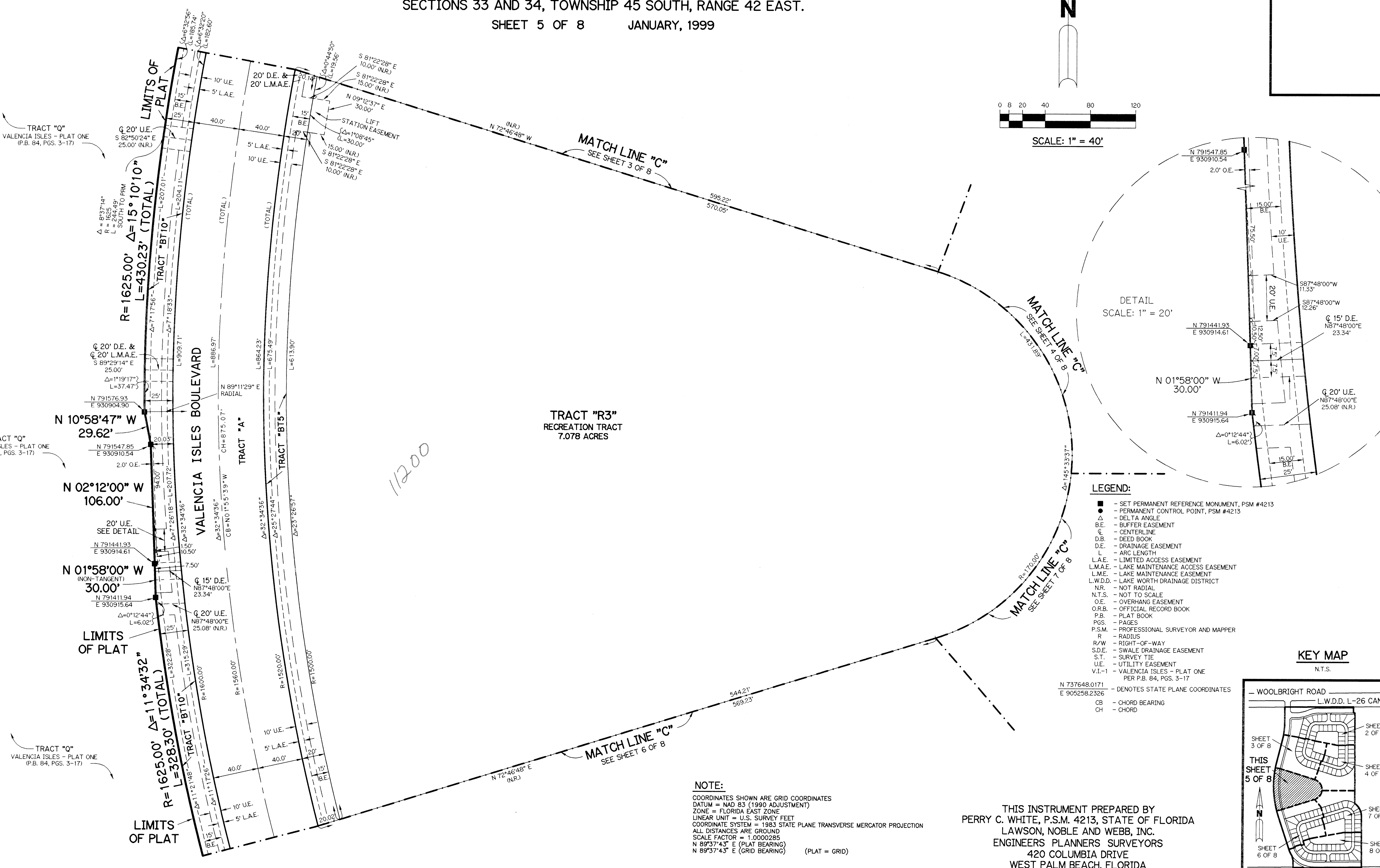
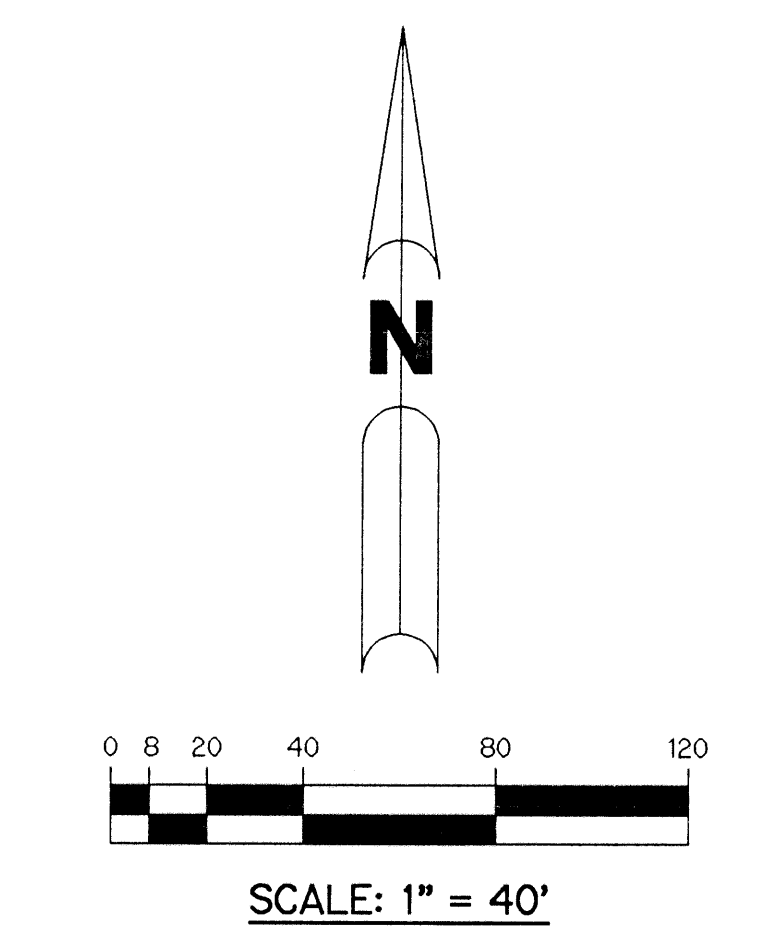


# VALENCIA ISLES - PLAT TWO

BEING A REPLAT OF A PORTION OF TRACT "Q" ACCORDING TO THE PLAT OF VALENCIA ISLES - PLAT ONE, AS RECORDED IN PLAT BOOK 84, PAGES 3 THROUGH 17, INCLUSIVE, OF THE PUBLIC RECORDS OF PALM BEACH COUNTY, FLORIDA. LYING IN SECTIONS 33 AND 34, TOWNSHIP 45 SOUTH, RANGE 42 EAST.

SHEET 5 OF 8      JANUARY, 1999

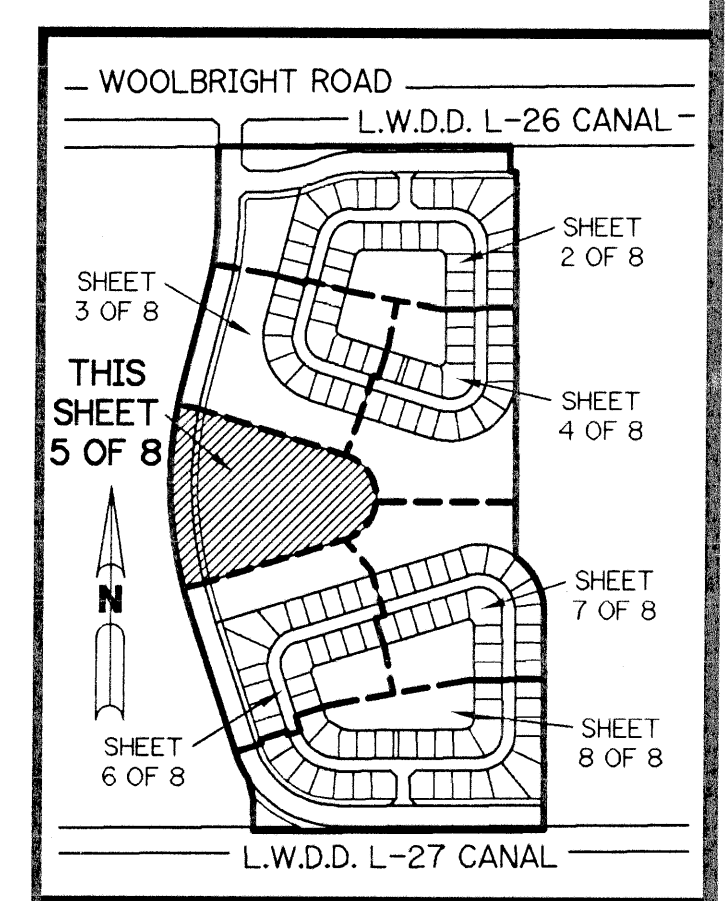
# 103



- LEGEND:**
- - SET PERMANENT REFERENCE MONUMENT, PSM #4213
  - - PERMANENT CONTROL POINT, PSM #4213
  - Δ - DELTA ANGLE
  - B.E. - BUFFER EASEMENT
  - - CENTERLINE
  - D.B. - DEED BOOK
  - D.E. - DRAINAGE EASEMENT
  - L - ARC LENGTH
  - L.A.E. - LIMITED ACCESS EASEMENT
  - L.M.A.E. - LAKE MAINTENANCE ACCESS EASEMENT
  - L.M.E. - LAKE MAINTENANCE EASEMENT
  - L.W.D.D. - LAKE WORTH DRAINAGE DISTRICT
  - N.R. - NOT RADIAL
  - N.T.S. - NOT TO SCALE
  - O.E. - OVERHANG EASEMENT
  - O.R.B. - OFFICIAL RECORD BOOK
  - P.B. - PLAT BOOK
  - PGS. - PAGES
  - P.S.M. - PROFESSIONAL SURVEYOR AND MAPPER
  - R - RADIUS
  - R/W - RIGHT-OF-WAY
  - S.D.E. - SWALE DRAINAGE EASEMENT
  - S.T. - SURVEY TIE
  - U.E. - UTILITY EASEMENT
  - V.I.-1 - VALENCIA ISLES - PLAT ONE PER P.B. 84, PGS. 3-17
- N 737648.0171  
E 905258.2326
- DENOTES STATE PLANE COORDINATES
  - CB - CHORD BEARING
  - CH - CHORD

### KEY MAP

N.T.S.



**NOTE:**  
 COORDINATES SHOWN ARE GRID COORDINATES  
 DATUM = NAD 83 (1990 ADJUSTMENT)  
 ZONE = FLORIDA EAST ZONE  
 LINEAR UNIT = U.S. SURVEY FEET  
 COORDINATE SYSTEM = 1983 STATE PLANE TRANSVERSE MERCATOR PROJECTION  
 ALL DISTANCES ARE GROUND  
 SCALE FACTOR = 1.0000285  
 N 89°37'43" E (PLAT BEARING)  
 N 89°37'43" E (GRID BEARING) (PLAT = GRID)

THIS INSTRUMENT PREPARED BY  
 PERRY C. WHITE, P.S.M. 4213, STATE OF FLORIDA  
 LAWSON, NOBLE AND WEBB, INC.  
 ENGINEERS PLANNERS SURVEYORS  
 420 COLUMBIA DRIVE  
 WEST PALM BEACH, FLORIDA  
 LB-6674

PROJECT: 84  
 PLAT BOOK: 84  
 PLAT PAGE: 103  
 COUNTY: PALM BEACH  
 TOWNSHIP: 45S  
 RANGE: 42E  
 SECTION: 33

Prepared  
4-27-99

11200