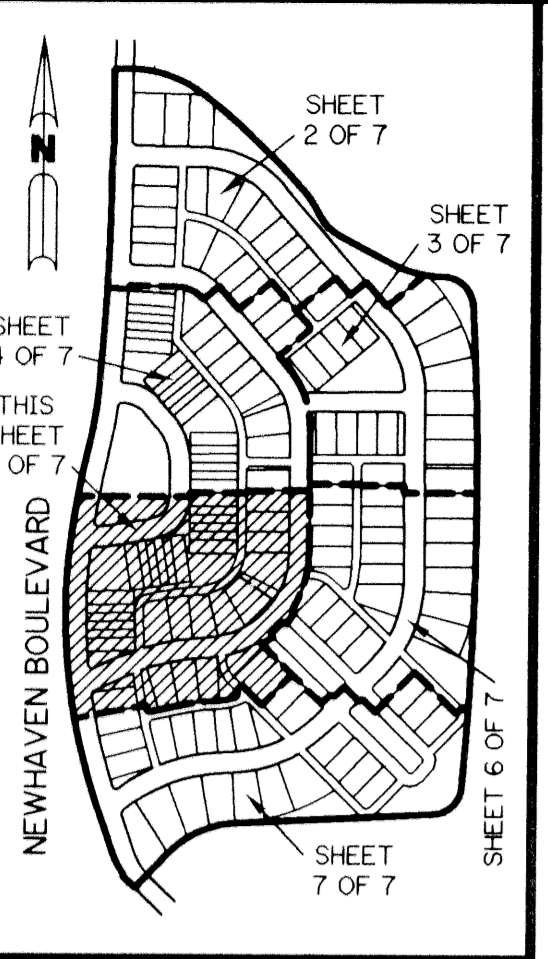


NEWHAVEN - 7B - PHASE 1 AT ABACOA

BEING A REPLAT OF A PORTION OF TRACT RN7B ACCORDING TO THE PLAT OF ABACOA PLAT NO. 1, AS RECORDED IN PLAT BOOK 78, PAGES 145 THROUGH 163, INCLUSIVE, OF THE PUBLIC RECORDS OF PALM BEACH COUNTY, FLORIDA. LYING IN SECTION 24, TOWNSHIP 41 SOUTH, RANGE 42 EAST.

SHEET 5 OF 7 JANUARY, 1999



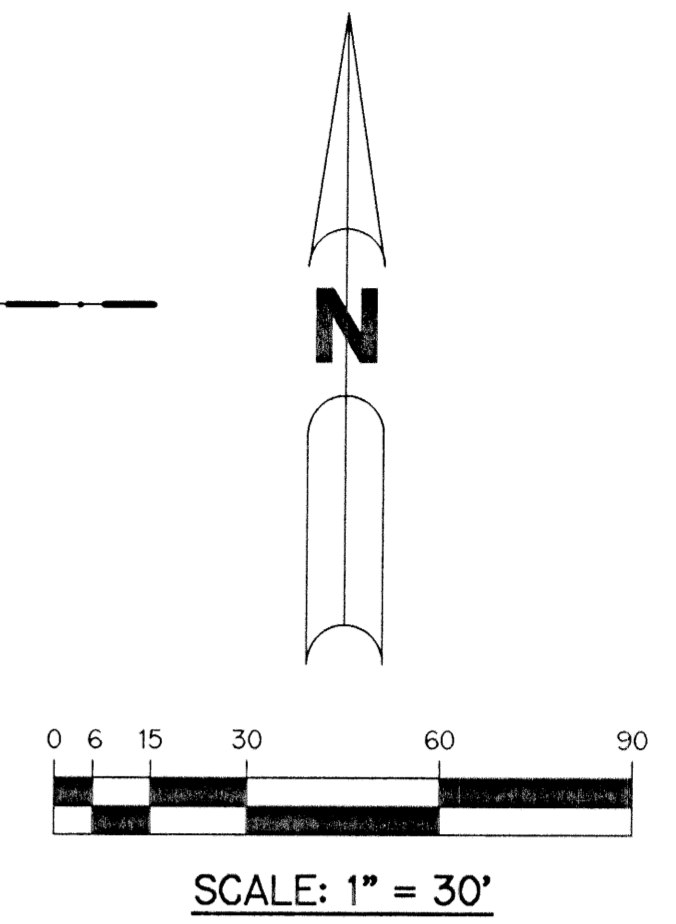
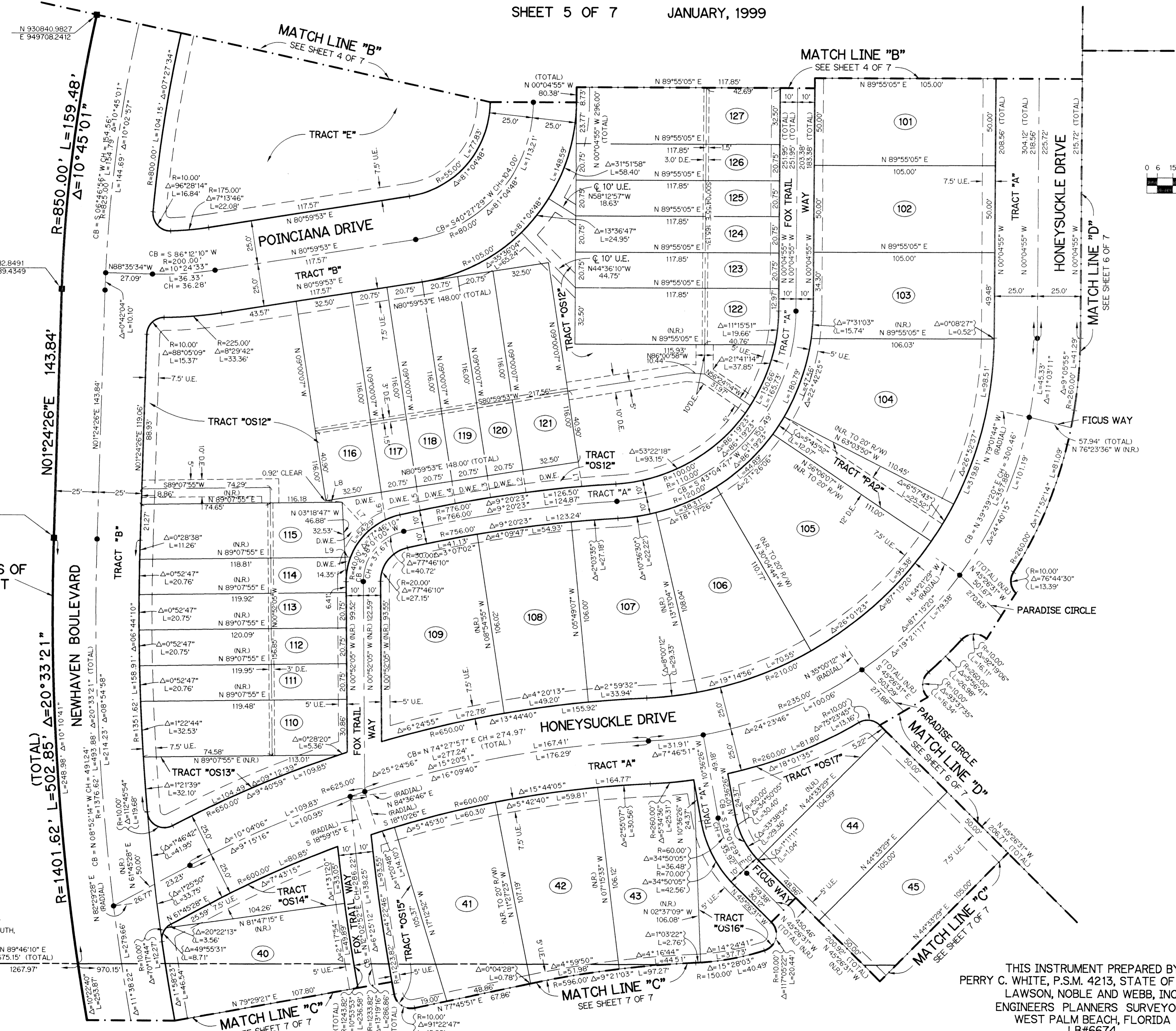
KEY MAP
N.T.S.

TRACT RN7B
ABACOA PLAT NO. 1
(P.B. 78, PGS. 145-163)

TRACT RN7B
ABACOA PLAT NO. 1
(P.B. 78, PGS. 145-163)

SOUTHWEST CORNER OF THE
NORTHEAST ONE-QUARTER OF
SECTION 24, TOWNSHIP 41 SOUTH,
RANGE 42 EAST

SOUTH LINE OF THE NORTHEAST
ONE-QUARTER OF SECTION 24,
TOWNSHIP 41 SOUTH, RANGE 42 EAST



- LEGEND:**
- - SET PERMANENT REFERENCE MONUMENT, PSM #4213
 - - SET PERMANENT CONTROL POINT, PSM #4213
 - Δ - DELTA ANGLE
 - BT - BUFFER TRACT
 - ⊕ - CENTERLINE
 - D.B. - DEED BOOK
 - D.E. - DRAINAGE EASEMENT
 - D.W.E. - DRIVEWAY EASEMENT
 - L - ARC LENGTH
 - L.A.E. - LIMITED ACCESS EASEMENT
 - L.M.A.E. - LAKE MAINTENANCE ACCESS EASEMENT
 - L.M.E. - LAKE MAINTENANCE EASEMENT
 - N.R. - NOT RADIAL
 - N.T.S. - NOT TO SCALE
 - OS - OPEN SPACE TRACT
 - O.R.B. - OFFICIAL RECORD BOOK
 - PA - PEDESTRIAN ACCESS TRACT
 - P.B. - PLAT BOOK
 - PGS. - PAGES
 - P.S.M. - PROFESSIONAL SURVEYOR AND MAPPER
 - R - RIGHT-OF-WAY
 - S.T. - SURVEY TIE
 - U.E. - UTILITY EASEMENT
 - N 737648.0171 - DENOTES STATE PLANE COORDINATES
 - E 905258.2326
 - CH - CHORD
 - CB - CHORD BEARING

LINE	DIRECTION	DISTANCE
L1	S 09°00'07" E	14.42'
L2	S 09°00'07" E	12.90'
L3	S 09°00'07" E	12.68'
L4	S 09°00'07" E	13.01'
L5	S 09°00'07" E	13.89'
L6	S 09°00'07" E	16.29'
L7	S 42°44'59" E	22.91'
L8	S 85°19'59" E	9.49'
L9	N 89°07'55" E	3.27'

NOTE:
COORDINATES SHOWN ARE GRID COORDINATES
DATUM = NAD 83 (1990 ADJUSTMENT)
ZONE = FLORIDA EAST ZONE
LINEAR UNIT = U.S. SURVEY FEET
COORDINATE SYSTEM 1983 STATE PLANE
TRANSVERSE MERCATOR PROJECTION
ALL DISTANCES ARE GROUND
SCALE FACTOR = 1.0000077
PLAT BEARING = GRID BEARING
NO ROTATION (PLAT = GRID)

THIS INSTRUMENT PREPARED BY
PERRY C. WHITE, P.S.M. 4213, STATE OF FLORIDA
LAWSON, NOBLE AND WEBB, INC.
ENGINEERS PLANNERS SURVEYORS
WEST PALM BEACH, FLORIDA
LB#6674