

IRONHORSE PARCEL B-2

BEING A REPLAT OF A PORTION OF PARCEL B
"IRONHORSE" (P.B. 65, PGS. 191-206)
SITUATE IN SECTION 27,
TOWNSHIP 42 SOUTH, RANGE 42 EAST
CITY OF WEST PALM BEACH,
PALM BEACH COUNTY, FLORIDA
MARCH, 1998 SHEET 4 OF 5

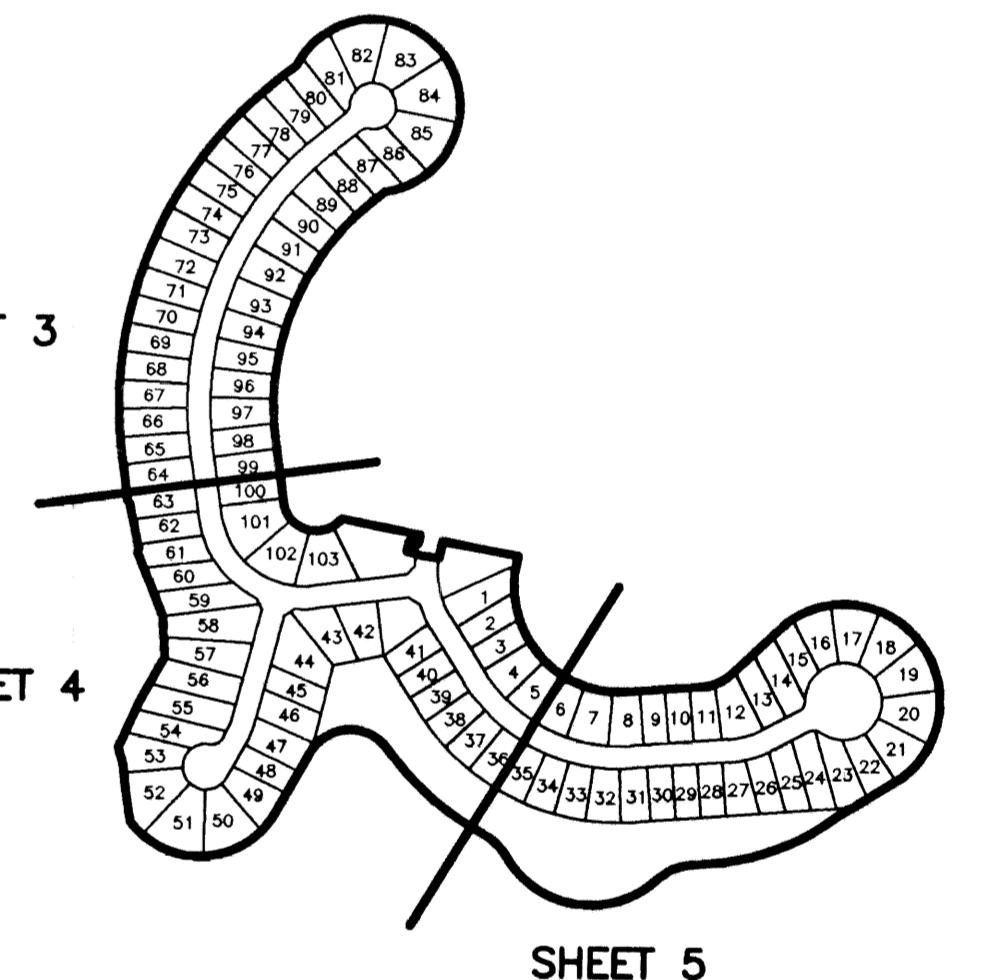
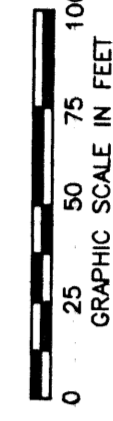
127

STATE OF FLORIDA
COUNTY OF PALM BEACH
THIS PLAT WAS FILED FOR
RECORD _____
THIS _____ DAY OF _____
AD, 1999 AND DULY RECORDED
IN PLAT BOOK _____ ON PAGES
_____ AND _____
DOROTHY H. WILKEN, CLERK
BY: _____, D.C.

CIRCUIT COURT SEAL

LEGEND

- Δ CENTRAL (DELTA) ANGLE
- DE DRAINAGE EASEMENT
- IEE INGRESS - EGRESS EASEMENT
- L ARC LENGTH
- NPBCID NORTHERN PALM BEACH COUNTY IMPROVEMENT DISTRICT
- (NR) NON-RADIAL
- ORB OFFICIAL RECORD BOOK
- PB PLAT BOOK
- PG(S) PAGE(S)
- PUD PLANNED UNIT DEVELOPMENT
- R RADIAL
- UE UTILITY EASEMENT
- WME WATER MANAGEMENT EASEMENT
- WME WATER MANAGEMENT MAINTENANCE EASEMENT
- PERMANENT REFERENCE MONUMENT
- FOUND PLS# 4763
- PERMANENT REFERENCE MONUMENT
- SET PLS# 4763
- PERMANENT CONTROL POINT
- SET PLS# 4763
- CENTERLINE



SHEET LOCATION MAP
NOT TO SCALE

NOTES

- THE LINEAR DIMENSIONS SHOWN HEREON ARE GROUND DISTANCES IN U.S. FEET AND DECIMAL PARTS THEREOF.
- ALL LINES WHICH INTERSECT CURVES ARE RADIAL TO THOSE CURVES UNLESS OTHERWISE NOTED.

THIS INSTRUMENT WAS PREPARED BY MARY HANNA CLODFELTER, P.S.M. IN THE OFFICES OF MOCK, ROOS & ASSOCIATES, INC., 5720 CORPORATE WAY, WEST PALM BEACH, FLORIDA 33407.

SCALE:
1" = 50'
P.A. NO.:
97123.00
DATE:
MARCH, 1998
DRAWING NO.
42-42-27-13

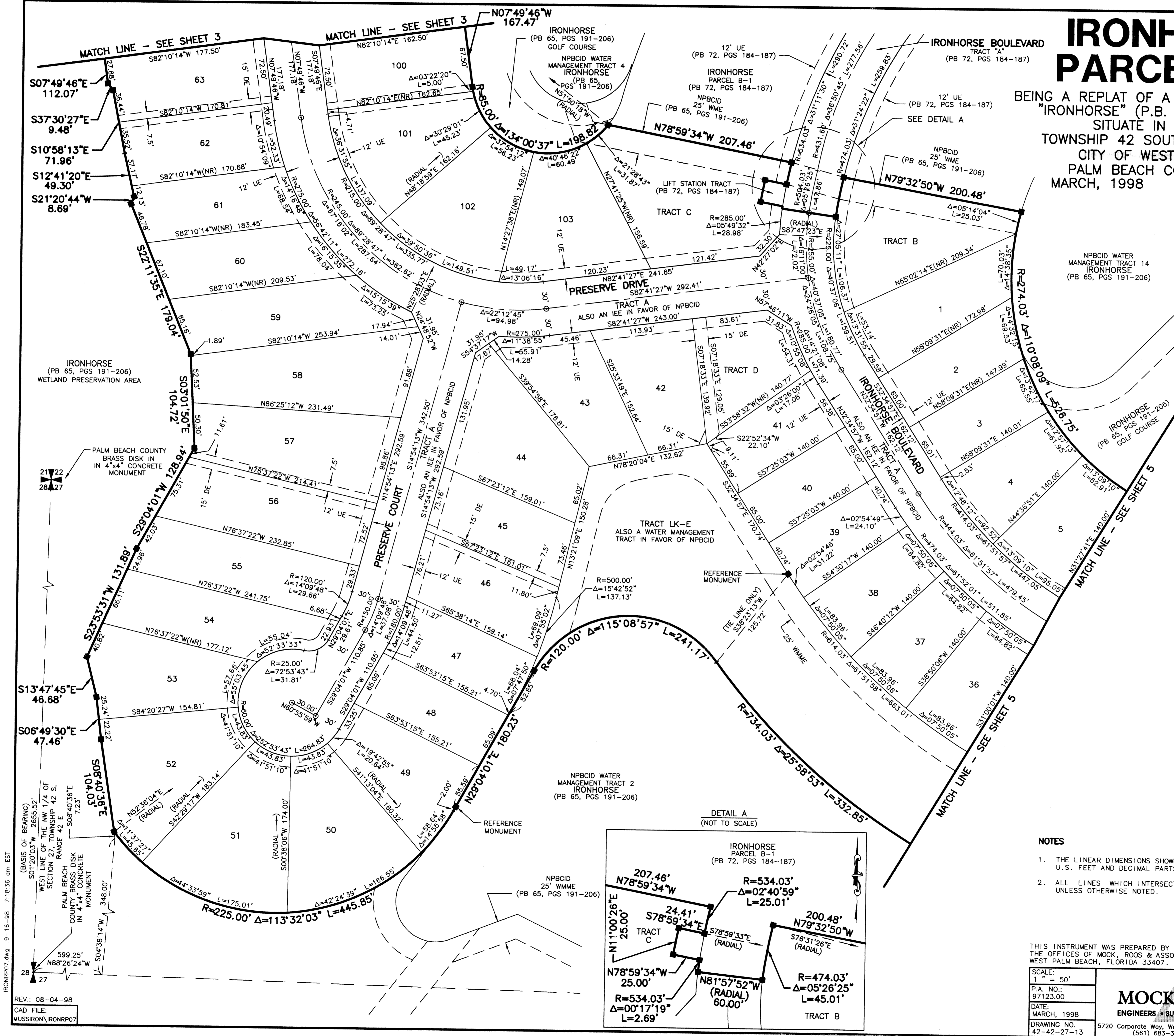
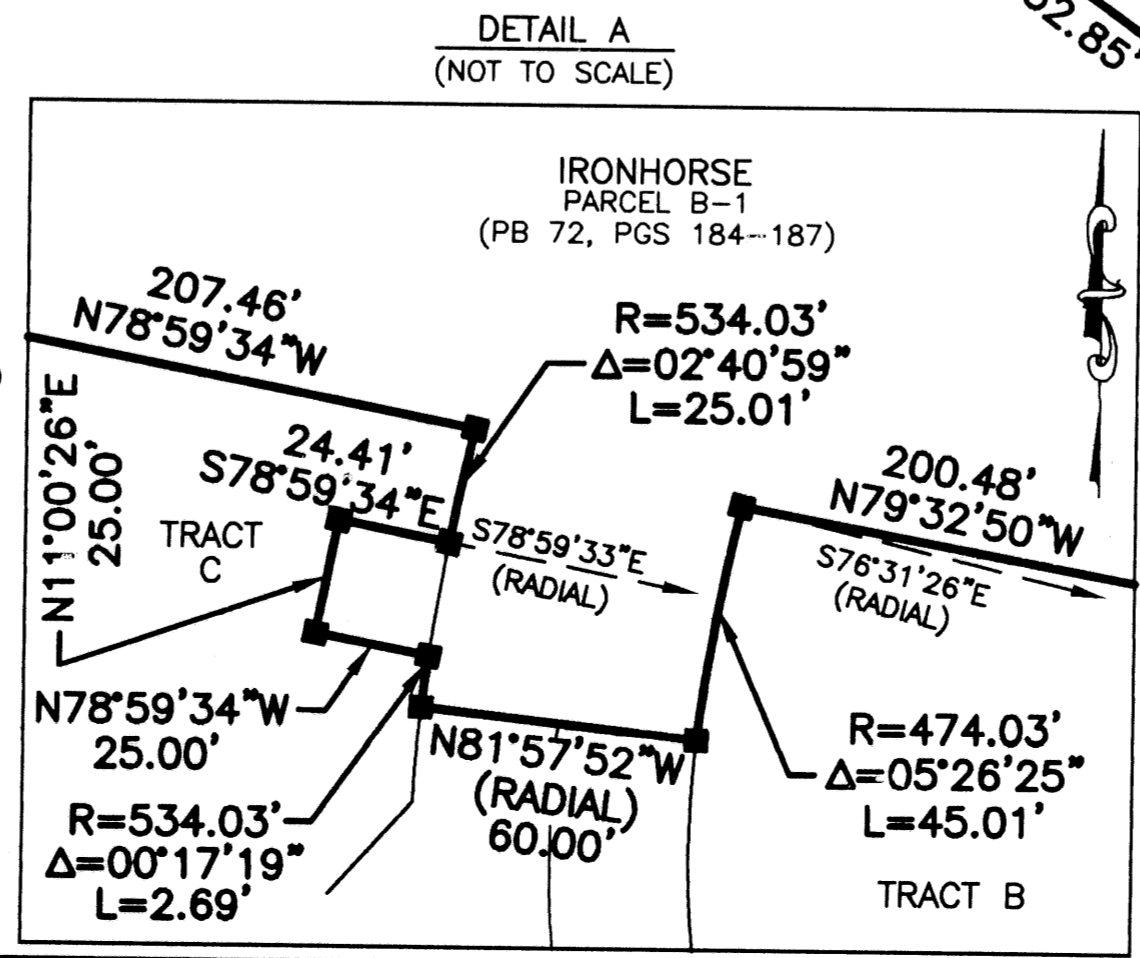
MOCK • ROOS
ENGINEERS • SURVEYORS • PLANNERS

5720 Corporate Way, West Palm Beach, Florida 33407
(561) 683-3113, fax 478-7248

**IRONHORSE
PARCEL B-2**

BEING A REPLAT OF A PORTION OF PARCEL B
"IRONHORSE" (P.B. 65, PGS. 191-206)
SITUATE IN SECTION 27, TOWNSHIP 42 SOUTH, RANGE 42 EAST
CITY OF WEST PALM BEACH,
PALM BEACH COUNTY, FLORIDA

SHEET 4 OF 5



IRONRP07.dwg 9-16-98 7:16:36 am EST

REV: 08-04-98
CAD FILE:
MUSSIRONIRONRP07

TAZ 802