

'99 GLADES ROAD BURDINES'

5511-000

153

A REPLAT OF TRACT 70, LESS THE NORTH 39.6 FEET, AND TRACT 91, LESS THE SOUTH 65 FEET, BLOCK 77, PALM BEACH FARMS CO. PLAT NO. 3. (PLAT BOOK 2, PAGES 45-54, PALM BEACH COUNTY RECORDS) SECTION 18, TOWNSHIP 47 SOUTH, RANGE 42 EAST

THIS PROPERTY IS ZONED "MUPD".
PALM BEACH COUNTY, FLORIDA

PREPARED BY:
KEITH AND SCHNARS, P.A.
ENGINEERS - PLANNERS - SURVEYORS
LB 1337
6500 NORTH ANDREWS AVENUE
FORT LAUDERDALE, FLORIDA 33309
(954) 776-1616
SEPTEMBER 1998
J:\PROJECTS\159111\SURVEY\5911\UPL1.DGN

NOTICE

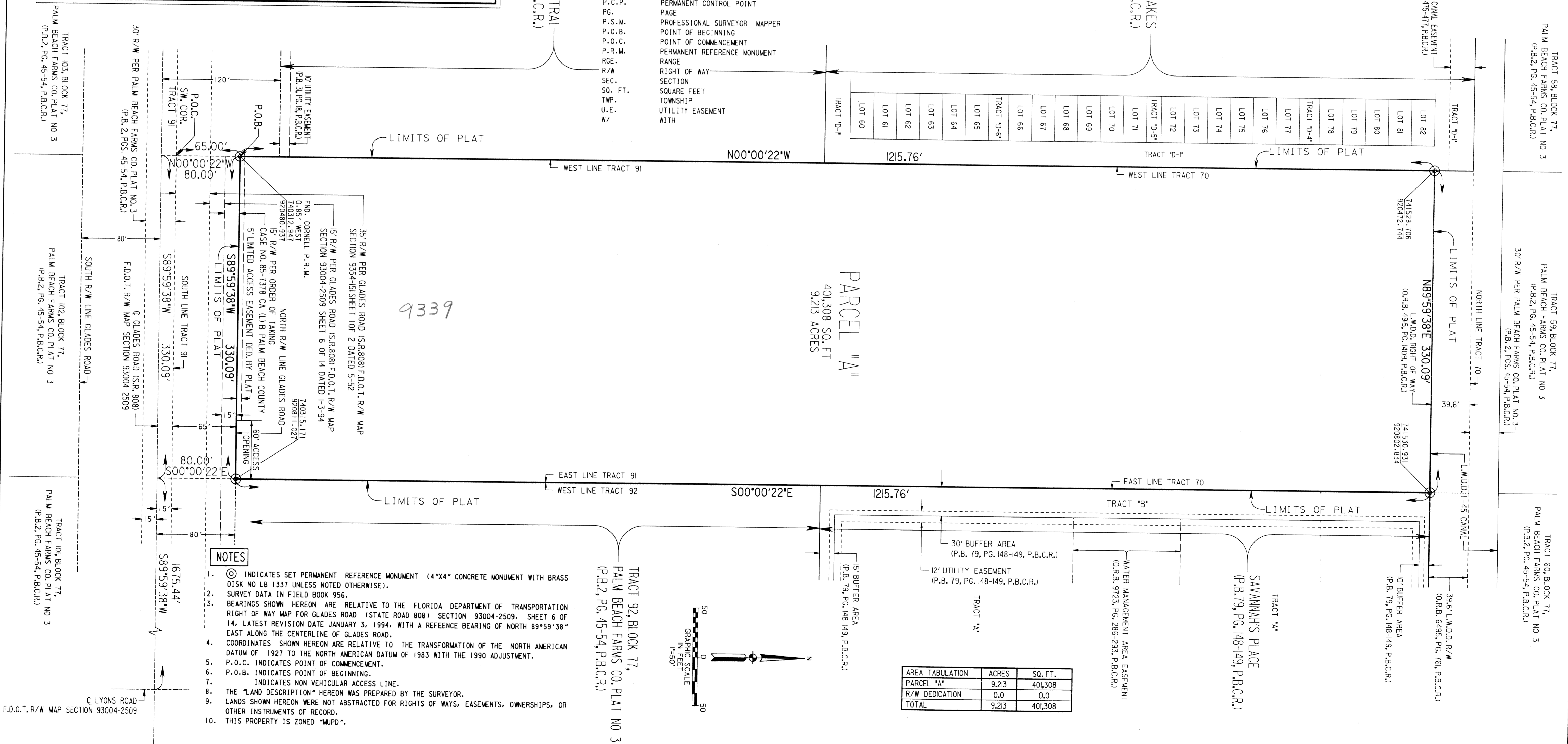
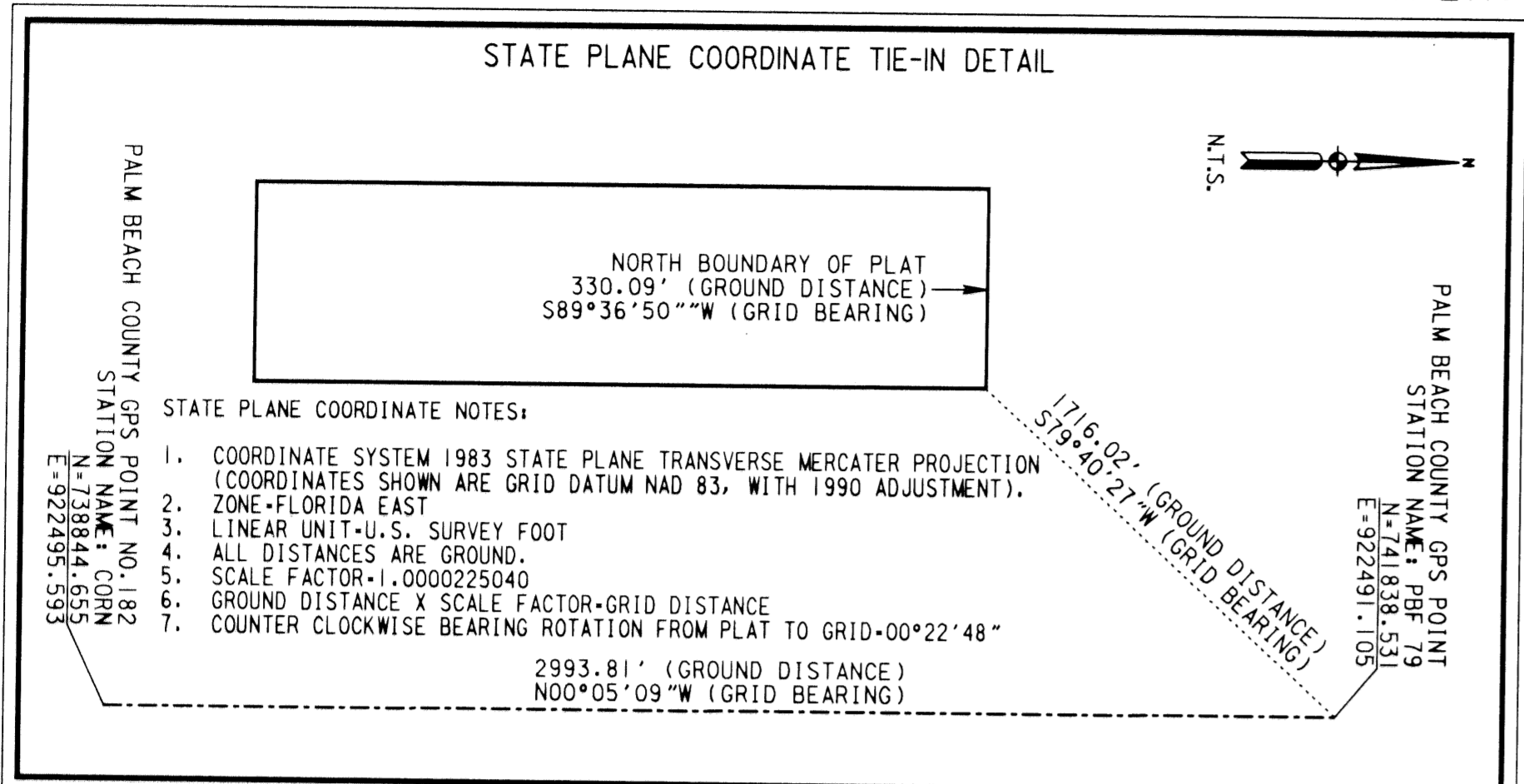
THIS PLAT, AS RECORDED IN ITS GRAPHIC FORM, IS THE OFFICIAL DEPICTION OF THE SUBDIVIDED LANDS DESCRIBED HEREIN AND WILL IN NO CIRCUMSTANCES BE SUPPLANTED IN AUTHORITY BY ANY OTHER GRAPHIC OR DIGITAL FORM OF THE PLAT. THERE MAY BE ADDITIONAL RESTRICTIONS THAT ARE NOT RECORDED ON THIS PLAT THAT MAY BE FOUND IN THE PUBLIC RECORDS OF THIS COUNTY.

STATE OF FLORIDA }
COUNTY OF PALM BEACH } SS
THIS PLAT WAS FILED FOR RECORD AT _____, THIS _____ TH DAY OF _____ 1999, AND DULY RECORDED IN PLAT BOOK No. _____ ON PAGES _____ THROUGH _____
DOROTHY H. WILKEN,
CLERK CIRCUIT COURT
BY: _____ D.C.

SHEET 2 OF 2

LEGEND

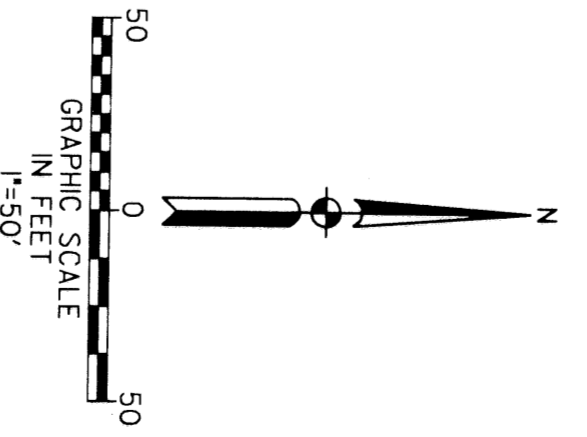
- ☉ CONC. CENTERLINE
- ◻ CONCRETE CORNER
- D.B. DEED BOOK
- F.D.O.T. FLORIDA DEPARTMENT OF TRANSPORTATION
- FND. FOUND
- KBS KEITH AND SCHNARS
- LB LICENSE BUSINESS
- L.W.D.D. LAKE WORTH DRAINAGE DISTRICT
- N.T.S. NOT TO SCALE
- O.R.B. OFFICIAL RECORD BOOK
- P.B. PLAT BOOK
- P.B.C.R. PALM BEACH COUNTY RECORDS
- P.C.P. PERMANENT CONTROL POINT
- PG. PAGE
- P.S.M. PROFESSIONAL SURVEYOR MAPPER
- P.O.B. POINT OF BEGINNING
- P.O.C. POINT OF COMMENCEMENT
- P.R.M. PERMANENT REFERENCE MONUMENT
- RGE. RANGE
- R/W RIGHT OF WAY
- SEC. SECTION
- SQ. FT. SQUARE FEET
- TWP. TOWNSHIP
- U.E. UTILITY EASEMENT
- W/ WITH



NOTES

1. ☉ INDICATES SET PERMANENT REFERENCE MONUMENT (4"x4" CONCRETE MONUMENT WITH BRASS DISK NO LB 1337 UNLESS NOTED OTHERWISE).
2. SURVEY DATA IN FIELD BOOK 956.
3. BEARINGS SHOWN HEREON ARE RELATIVE TO THE FLORIDA DEPARTMENT OF TRANSPORTATION RIGHT OF WAY MAP FOR GLADES ROAD (STATE ROAD 808) SECTION 93004-2509, SHEET 6 OF 14, LATEST REVISION DATE JANUARY 3, 1994, WITH A REFERENCE BEARING OF NORTH 89°59'38" EAST ALONG THE CENTERLINE OF GLADES ROAD.
4. COORDINATES SHOWN HEREON ARE RELATIVE TO THE TRANSFORMATION OF THE NORTH AMERICAN DATUM OF 1927 TO THE NORTH AMERICAN DATUM OF 1983 WITH THE 1990 ADJUSTMENT.
5. P.O.C. INDICATES POINT OF COMMENCEMENT.
6. P.O.B. INDICATES POINT OF BEGINNING.
7. _____ INDICATES NON VEHICULAR ACCESS LINE.
8. THE "LAND DESCRIPTION" HEREON WAS PREPARED BY THE SURVEYOR.
9. LANDS SHOWN HEREON WERE NOT ABSTRACTED FOR RIGHTS OF WAYS, EASEMENTS, OWNERSHIPS, OR OTHER INSTRUMENTS OF RECORD.
10. THIS PROPERTY IS ZONED "MUPD".

AREA TABULATION	ACRES	SQ. FT.
PARCEL "A"	9.213	401,308
R/W DEDICATION	0.0	0.0
TOTAL	9.213	401,308



REVISION
 DATE
 BY
 DESCRIPTION
 04
 153
 0808
 MUPD
 45-54
 33434
 716
 BURDINES
 PALM BEACH FARMS CO. PLAT NO. 3

F.D.O.T. R/W MAP SECTION 93004-2509