

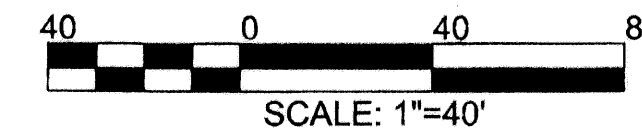
STATE OF FLORIDA
COUNTY OF PALM BEACH
THIS PLAT WAS FILED FOR
RECORD AT _____ M.,
THIS _____ DAY OF
1999, AND DULY RECORDED IN PLAT
BOOK NO. _____ ON
PAGES _____ THROUGH _____
DOROTHY H. WILKEN
CLERK CIRCUIT COURT
BY _____ D.C.

PLAT OF
GREEN PINES ESTATES

A REPLAT OF A PORTION OF THE REPLAT OF GREENACRES PLAT #2
AS RECORDED IN PLAT BOOK 16, PAGE 4 ALSO A REPLAT OF A PORTION
OF THE PLAT OF GREENACRES PLAT #2 AS RECORDED IN PLAT BOOK 13, PAGES 3 & 4
LYING IN SECTION 23, TOWNSHIP 44 SOUTH, RANGE 42 EAST.
CITY OF GREENACRES, PALM BEACH COUNTY, FLORIDA

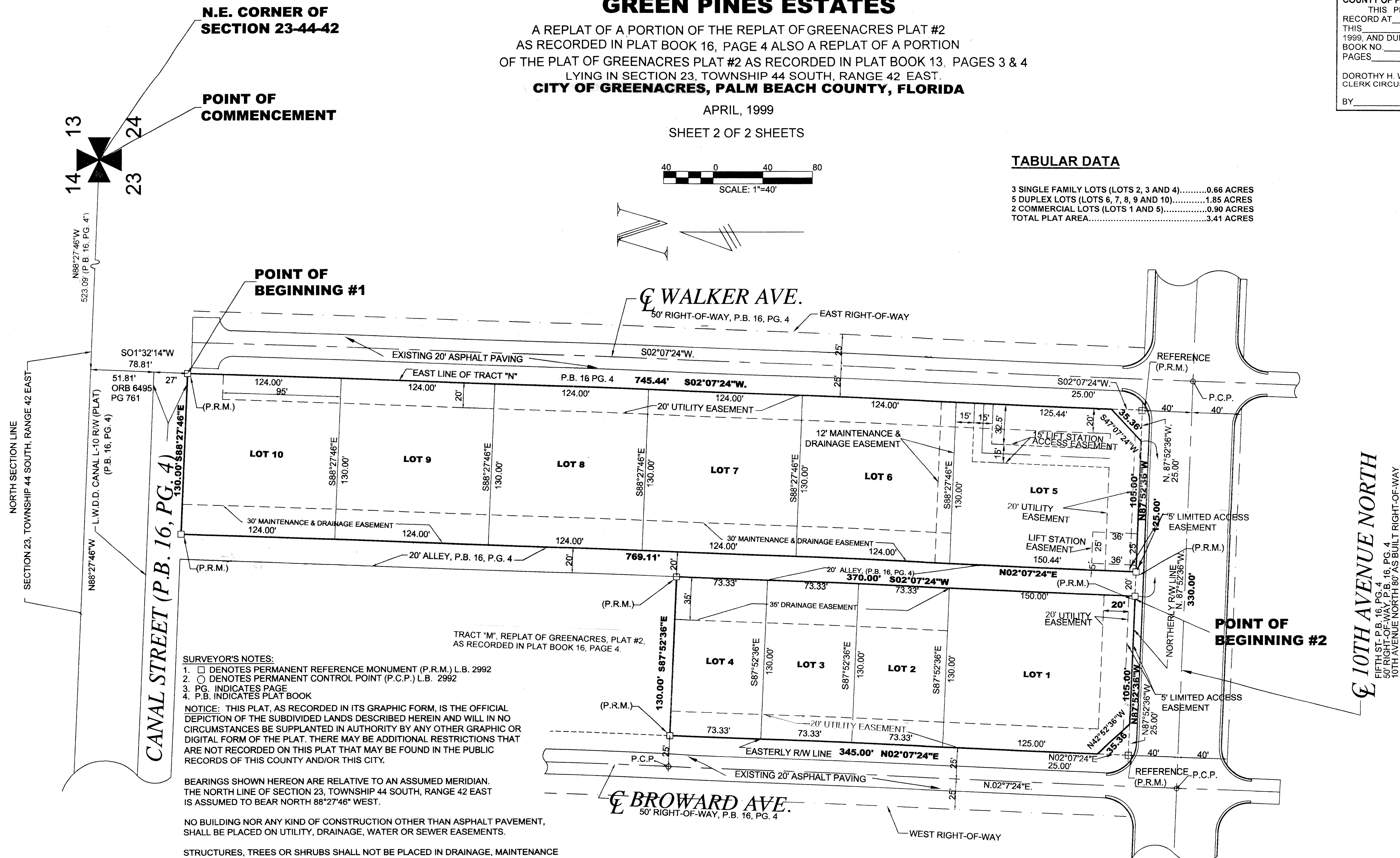
APRIL, 1999

SHEET 2 OF 2 SHEETS



TABULAR DATA

3 SINGLE FAMILY LOTS (LOTS 2, 3 AND 4).....0.66 ACRES
5 DUPLEX LOTS (LOTS 6, 7, 8, 9 AND 10).....1.85 ACRES
2 COMMERCIAL LOTS (LOTS 1 AND 5).....0.90 ACRES
TOTAL PLAT AREA.....3.41 ACRES



- SURVEYOR'S NOTES:**
- 1. □ DENOTES PERMANENT REFERENCE MONUMENT (P.R.M.) L.B. 2992
 - 2. ○ DENOTES PERMANENT CONTROL POINT (P.C.P.) L.B. 2992
 - 3. PG. INDICATES PAGE
 - 4. P.B. INDICATES PLAT BOOK

NOTICE: THIS PLAT, AS RECORDED IN ITS GRAPHIC FORM, IS THE OFFICIAL DEPICTION OF THE SUBDIVIDED LANDS DESCRIBED HEREIN AND WILL IN NO CIRCUMSTANCES BE SUPPLANTED IN AUTHORITY BY ANY OTHER GRAPHIC OR DIGITAL FORM OF THE PLAT. THERE MAY BE ADDITIONAL RESTRICTIONS THAT ARE NOT RECORDED ON THIS PLAT THAT MAY BE FOUND IN THE PUBLIC RECORDS OF THIS COUNTY AND/OR THIS CITY.

BEARINGS SHOWN HEREON ARE RELATIVE TO AN ASSUMED MERIDIAN. THE NORTH LINE OF SECTION 23, TOWNSHIP 44 SOUTH, RANGE 42 EAST IS ASSUMED TO BEAR NORTH 88°27'46" WEST.

NO BUILDING NOR ANY KIND OF CONSTRUCTION OTHER THAN ASPHALT PAVEMENT, SHALL BE PLACED ON UTILITY, DRAINAGE, WATER OR SEWER EASEMENTS.

STRUCTURES, TREES OR SHRUBS SHALL NOT BE PLACED IN DRAINAGE, MAINTENANCE OR UTILITY EASEMENTS WITHOUT THE PERMISSION OF THE OCCUPYING UTILITY.

PALM BEACH COUNTY WATER UTILITIES DEPARTMENT SHALL HAVE THE RIGHT TO CONSTRUCT AND MAINTAIN WATER AND SEWER FACILITIES WITHIN UTILITY EASEMENTS AS SHOWN HEREON.

WHERE DRAINAGE UTILITY, WATER OR SEWER EASEMENTS CROSS, DRAINAGE EASEMENTS SHALL TAKE PRECEDENCE.

NOTICE: BUILDING SETBACK LINES SHALL BE IN ACCORDANCE WITH CITY OF GREENACRES ORDINANCES AND SITE PLAN APPROVAL.

PROJECT NO. 7401
PREPARED BY R.D.W.
SCALE: 1"=40'
DATE: 3-4-99

2 OF 2
PAGE

TRIANGLE
Land Surveying, Inc.
Surveying To Specification
LB 2992
183 Rivera Avenue
Royal Palm Beach, Florida 33411-1001
(407) 798-3966