

OKEECHOBEE BLVD. PUBLIC STORAGE MUPD

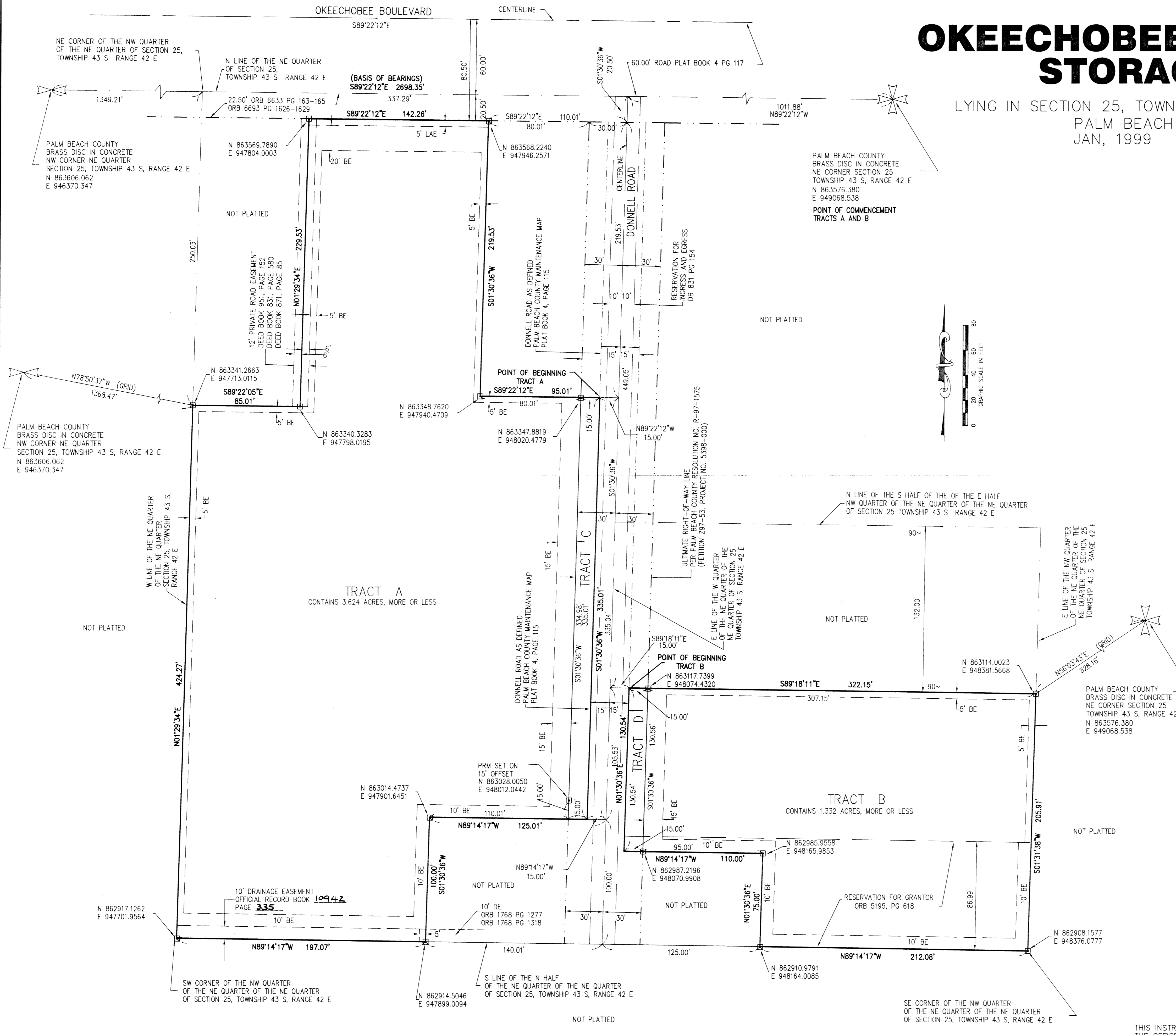
LYING IN SECTION 25, TOWNSHIP 43 SOUTH, RANGE 42 EAST
PALM BEACH COUNTY, FLORIDA
JAN, 1999 SHEET 2 OF 2

STATE OF FLORIDA
COUNTY OF PALM BEACH

THIS PLAT WAS FILED FOR
RECORD _____ DAY OF _____
AD, 1999 AND DULY RECORDED
IN PLAT BOOK _____ ON PAGE(S)
_____ AND _____

DOROTHY H. WILKEN, CLERK
BY: _____, D.C.

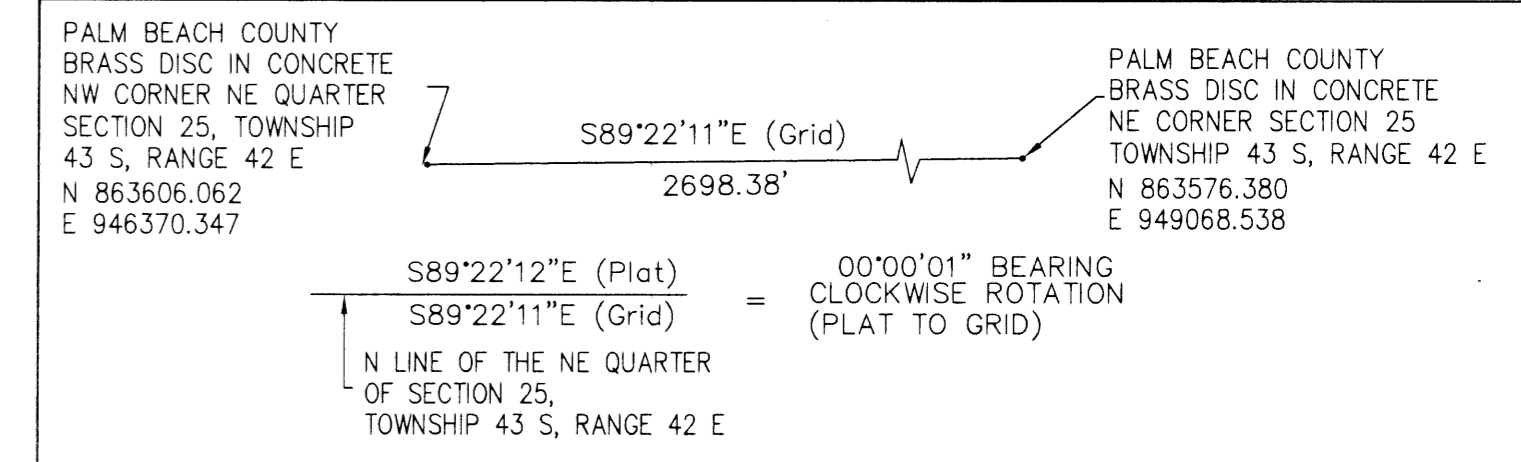
CIRCUIT COURT SEAL



LEGEND

BE	BUFFER EASEMENT
DE	DRAINAGE EASEMENT
FPL	FLORIDA POWER & LIGHT
LAE	LIMITED ACCESS EASEMENT
ORB	OFFICIAL RECORD BOOK
PB	PLAT BOOK
PG(S)	PAGE(S)
PUD	PLANNED UNIT DEVELOPMENT
UE	UTILITY EASEMENT
□	PERMANENT REFERENCE MONUMENT SET LB# 4852

- NOTES:
1. THE COORDINATES SHOWN HEREON ARE STATE PLANE GRID COORDINATES ACCORDING TO THE TRANSVERSE MERCATOR PROJECTION OF THE FLORIDA EAST ZONE, N.A.D. 83, PER THE 1990 ADJUSTMENT.
 2. THE LINEAR DIMENSIONS SHOWN HEREON ARE GROUND DISTANCES IN U.S. FEET AND DECIMAL PARTS THEREOF.
 3. THE GROUND DISTANCE TO GRID DISTANCE SCALE FACTOR IS 1.000039540 (GROUND DISTANCE X SCALE FACTOR = GRID DISTANCE).



SUBDIVISION
BOOK 24
FLOOD ZONE B
QUAD # 31
TAZ 410
PUD NAME
Okeechobee Blvd
Public Storage
PAGE 174
FLOOD MAP # 155B
ZONING MAP # 0
SE 97-119
ZIP CODE 33409

THIS INSTRUMENT WAS PREPARED BY TIMOTHY M. SMITH, P.S.M. IN THE OFFICES OF K & N SURVEYORS, INC., 9040 BELVEDERE ROAD WEST PALM BEACH, FLORIDA 33411.

SCALE:
1" = 40'
JOB NO.:
11-019-97
DATE:
JULY 1998
DRAWING NO.
D-319

K & N SURVEYORS, INC. LB #4852
P.O. BOX 210334
West Palm Beach, FL, 33421-0334
9040 Belvedere Rd., West Palm Beach, FL, 33411 Tele (561) 798-5005

OKEECHOBEE BLVD, PUBLIC STORAGE MUPD
A PORTION OF THE NORTHEAST QUARTER OF SECTION 25, TOWNSHIP 43 SOUTH, RANGE 42 EAST PALM BEACH COUNTY, FLORIDA