

HITCHIN' POST PARK

A REPLAT OF PORTIONS OF TRACTS X, Y, AND S-11, BOUNDARY PLAT OF ORIOLE COUNTRY
 RECORDED IN PLAT BOOK 32, PAGES 175 THROUGH 180, PUBLIC RECORDS OF PALM BEACH COUNTY
 LYING IN SECTIONS 14, 15, 22, AND 23, TOWNSHIP 47 SOUTH, RANGE 41 EAST,
 PALM BEACH COUNTY, FLORIDA

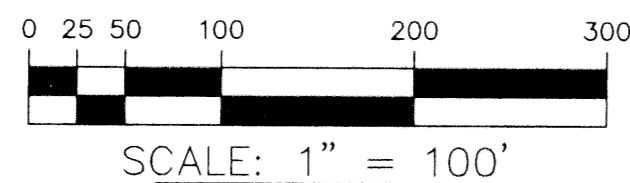
APRIL 1999

SHEET 2 OF 2

196

AREA TABLE:

TRACT A-1	= 17.161 ACRES
TRACT A-2	= 1.718 ACRES
TRACT B	= 13.984 ACRES
TRACT D	= 3.000 ACRES
TOTAL AREA	= 35.863 ACRES



PALM BEACH COUNTY
 BRASS DISK "WCI04.5"
 N738482.618
 E906525.665

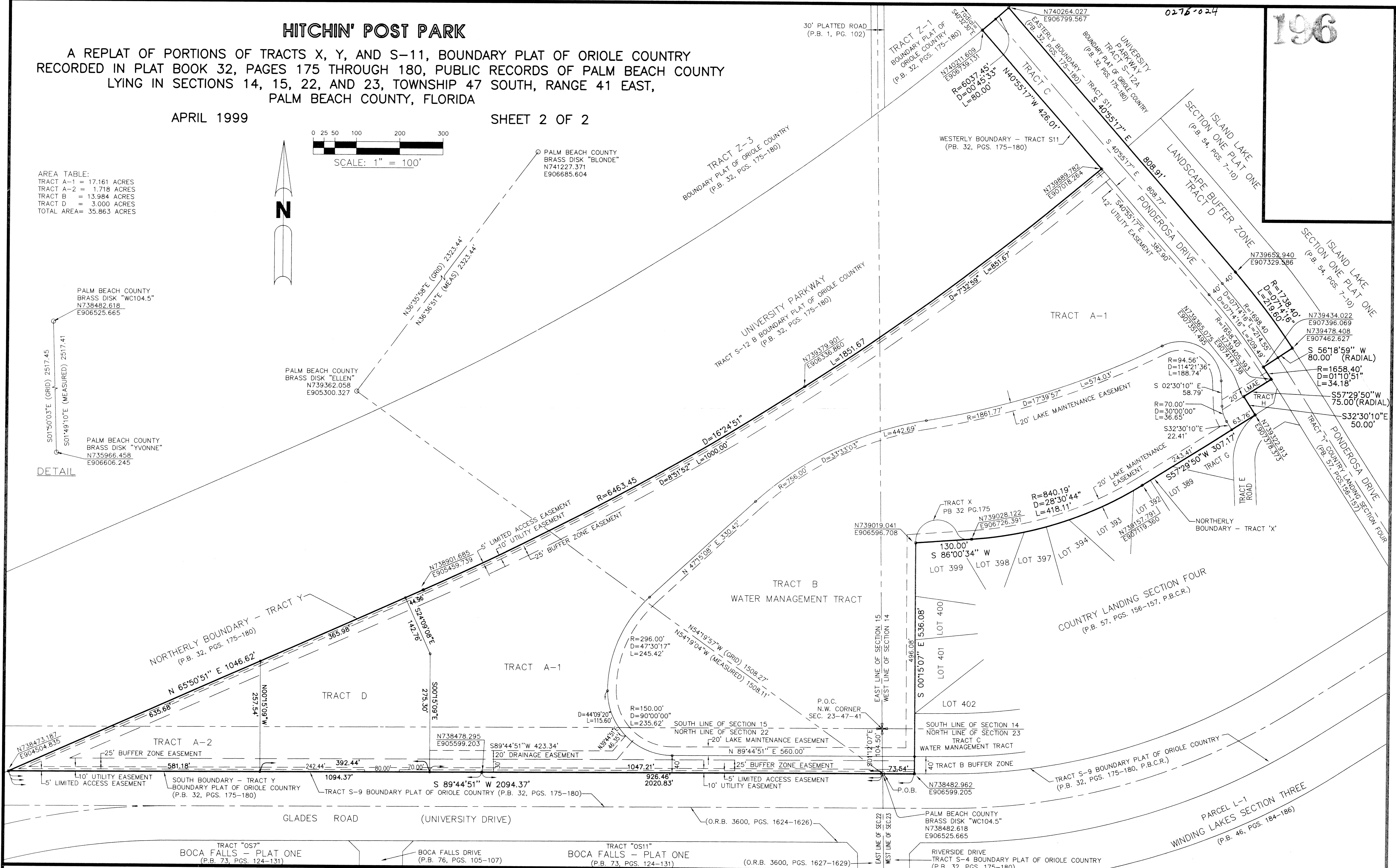
S01°50'03"E (GRID) 2517.45
 S01°49'10"E (MEASURED) 2517.41

PALM BEACH COUNTY
 BRASS DISK "YVONNE"
 N735966.458
 E906606.245

DETAIL

PALM BEACH COUNTY
 BRASS DISK "ELLEN"
 N739362.058
 E905300.327

N36°35'58"E (GRID) 2323.44'
 N36°36'51"E (MEAS) 2323.44'



SUBDIVISION: Hitchin' Post Park
 BOOK: 84
 PAGE: 196
 FLOOD MAP# 100B
 ZONING: PD
 QUAD# 60
 SE
 TAZ: 1037
 PUD NAME: Hitchin' Post Park
 LACER'S RUN

BROWN & PHILLIPS, INC.
 PROFESSIONAL SURVEYING SERVICES
 CERTIFICATE OF AUTHORIZATION # LB 6473
 3970 RCA BOULEVARD, SUITE 7005, P.B.G. FLORIDA 33410 561-775-9337, 626-7866 FAX

THIS INSTRUMENT PREPARED BY:
 JOHN E. PHILLIPS, III
 PROFESSIONAL SURVEYOR AND MAPPER
 STATE OF FLORIDA No. 4826

PLAT OF
HITCHIN' POST PARK

DRAWN: MDB	PROJ. NO. 98-062P
CHECKED: JEP:III	SCALE: 1"=100'
FIELD BOOK:	DATE: APRIL 1999
PAGES:	SHEET 2 OF 2

REVISION: REVISED PLAT PER COUNTY COMMENTS LETTER DATED 4/16/99
 REVISION: REVISED PLAT BUFFER PER COUNTY COMMENTS LETTER DATED 4/22/99