

MELROSE P.U.D. (VENETIAN ISLES)

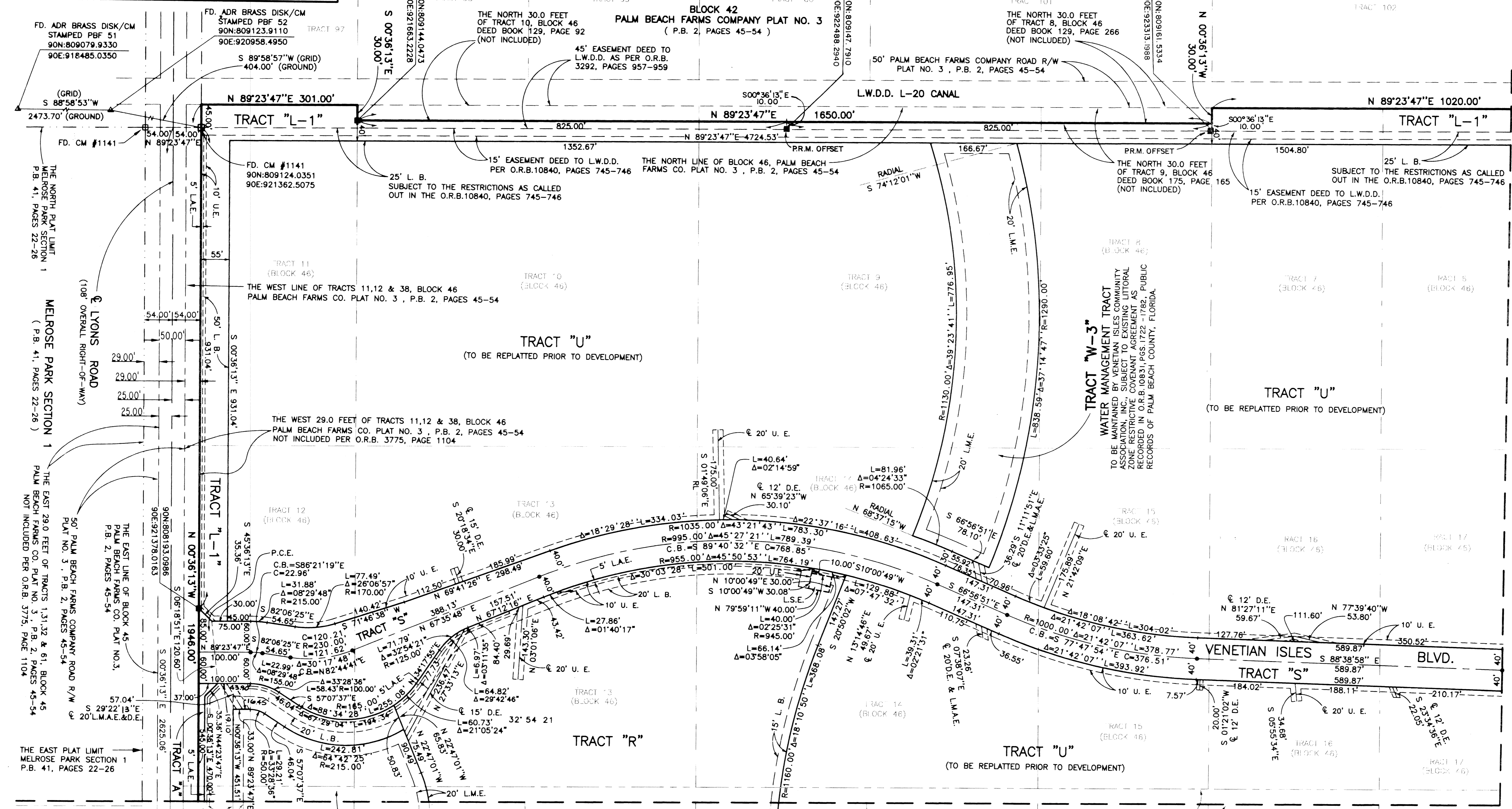
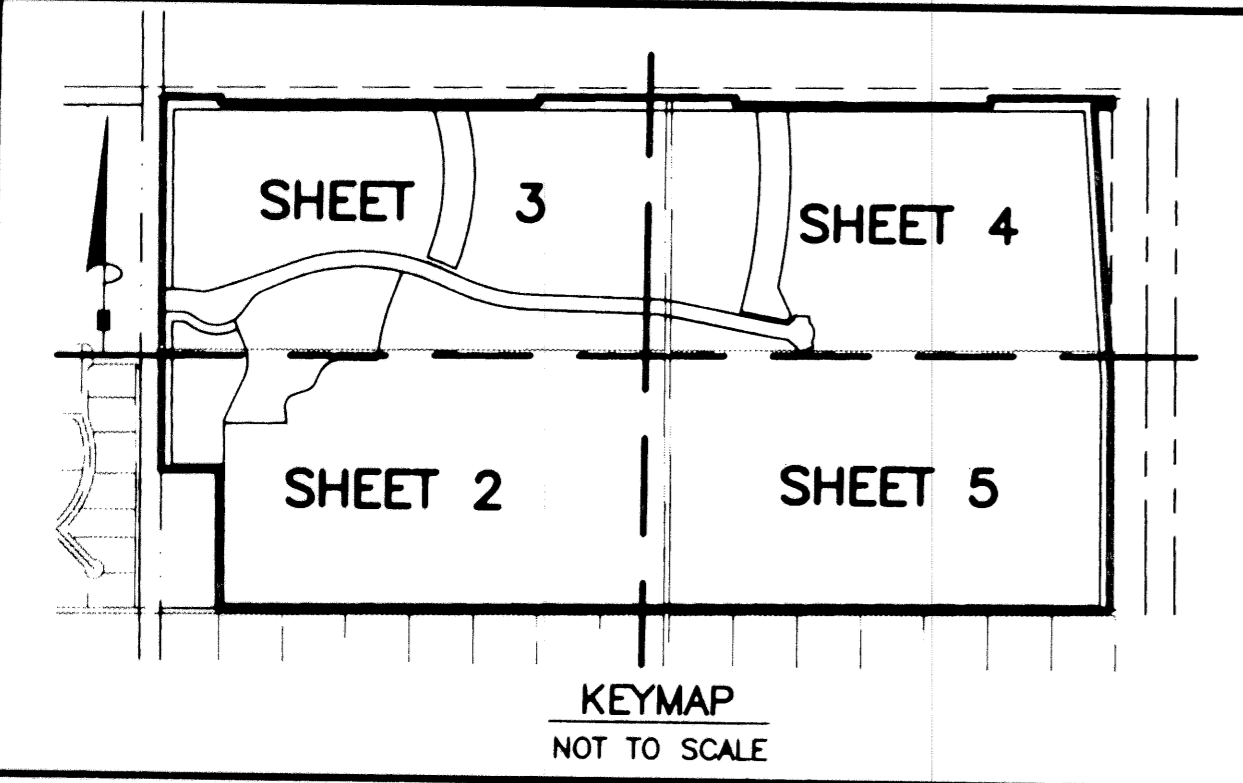
0253-009

11

A PLANNED UNIT DEVELOPMENT
 BEING A REPLAT OF A PORTION OF BLOCK 46, PALM BEACH FARMS COMPANY PLAT NO. 3 AS RECORDED
 IN PLAT BOOK 2, PAGES 45 THRU 54, PUBLIC RECORDS OF PALM BEACH COUNTY, FLORIDA AND
 LYING IN SECTION 17, TOWNSHIP 45 SOUTH, RANGE 42 EAST, PALM BEACH COUNTY, FLORIDA.
 SHEET 3 OF 5

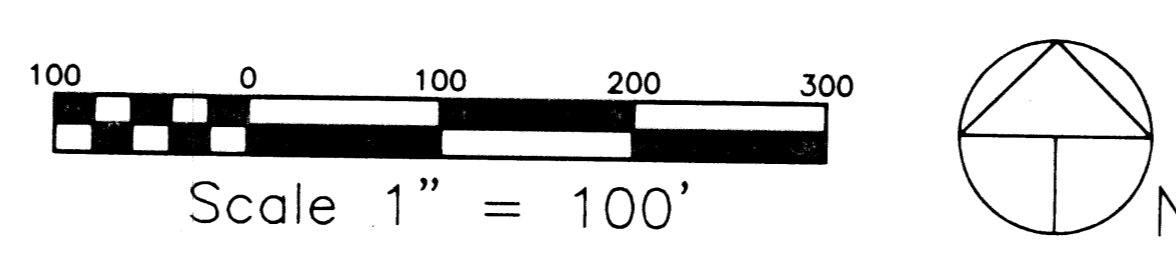
MARCH, 1999

STATE OF FLORIDA
 COUNTY OF PALM BEACH
 THIS PLAT WAS FILED FOR RECORD AT _____
 M. THIS DAY OF _____ 19____
 AND DULY RECORDED IN PLAT BOOK NO. _____
 ON PAGE _____
 DOROTHY H. WILKEN, CLERK OF THE CIRCUIT COURT
 BY _____ D.C.



COORDINATE NOTE:
 STATE PLANE COORDINATES SHOWN ARE GRID DATUM, NAD 83 1990
 ADJUSTMENT, FLORIDA EAST ZONE, COORDINATE SYSTEM 1983 STATE
 PLANE, TRANSVERSE MERCATOR PROJECTION
 LINEAR UNIT = US SURVEY FEET
 ALL DISTANCES ARE GROUND
 SCALE FACTOR = 1.000232
 GROUND DISTANCE X SCALE FACTOR = GRID DISTANCE
 N 00°36'13"W (PLAT BEARING) 00°21'03" COUNTERCLOCKWISE ROTATION
 N 00°57'16"W (GRID BEARING) PLAT TO GRID
 THE EAST RIGHT-OF-WAY LINE OF LYONS ROAD

TRACT "W-1"
WATER MANAGEMENT TRACT
 TO BE MAINTAINED BY VENETIAN ISLES COMMUNITY
 ASSOCIATION, INC., SUBJECT TO EXISTING LITTORAL
 ZONE RESTRICTIVE COVENANT AGREEMENT AS
 RECORDED IN O.R.B. 10831, PGS. 1722-1782, PUBLIC
 RECORDS OF PALM BEACH COUNTY, FLORIDA.



MATCH TO SHEET 4

SUBDIVISION Melrose Pod
 BOOK 86
 FLOOD MAP # 1854
 QUAD # 119
 SE. 83-44A
 TAZ 1029
 PUD NAME Melrose Pod

Landmark Surveying & Mapping Inc.
 1850 Forest Hill Boulevard
 Ph. (561) 433-5405 Suite 100 W.P.B. Florida
 LB # 4396

MELROSE P.U.D. (VENETIAN ISLES)