

MELROSE P.U.D. (VENETIAN ISLES)

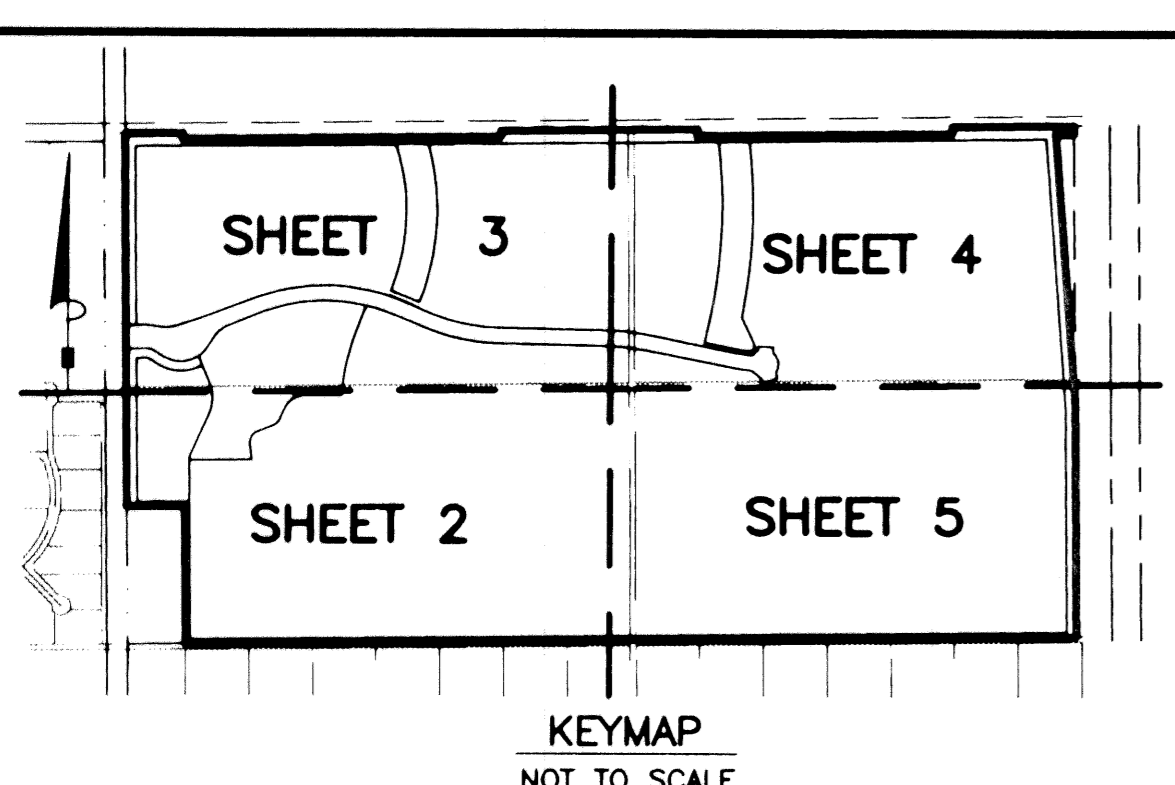
0233-009

12

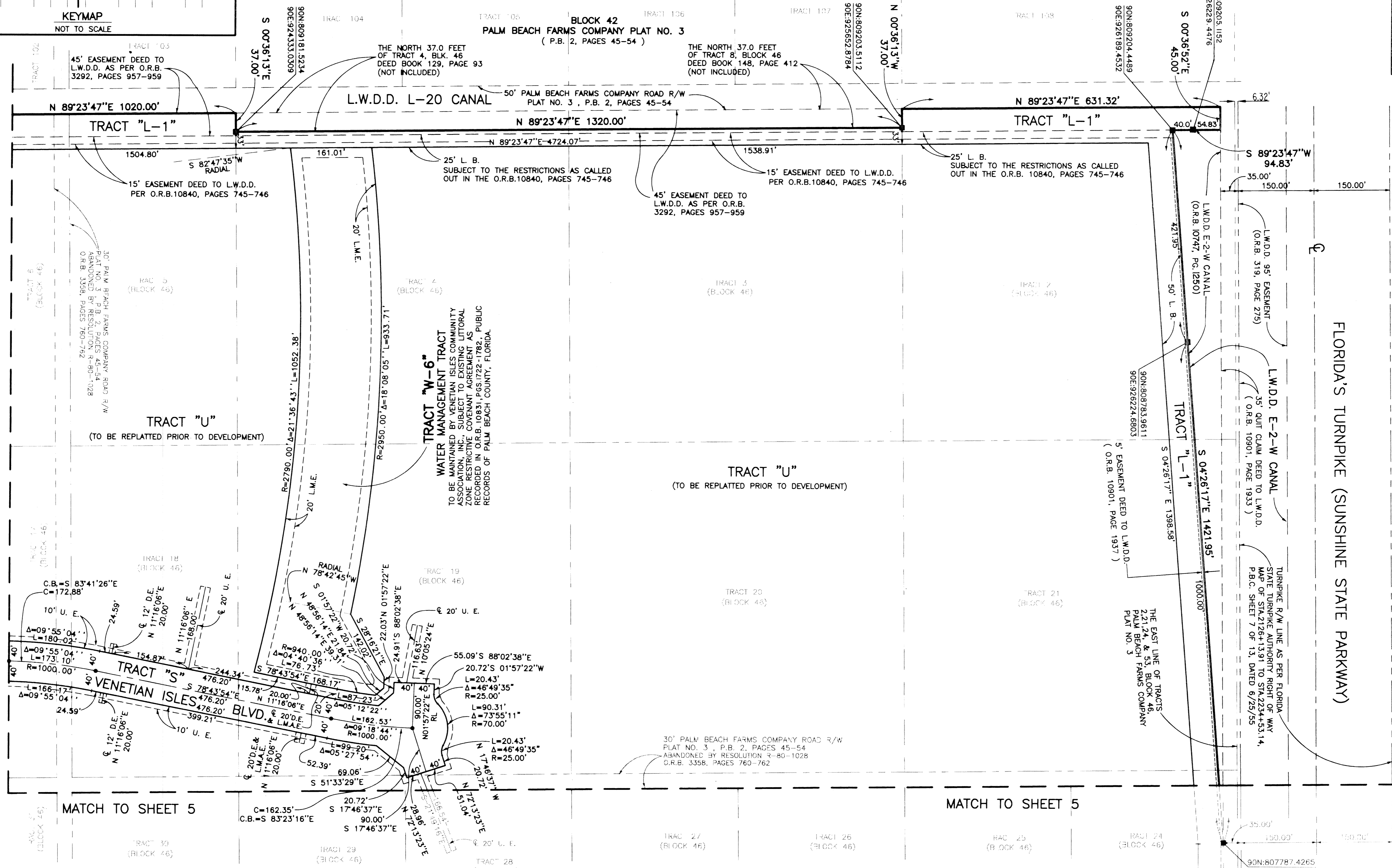
A PLANNED UNIT DEVELOPMENT

BEING A REPLAT OF A PORTION OF BLOCK 46, PALM BEACH FARMS COMPANY PLAT NO. 3 AS RECORDED
IN PLAT BOOK 2, PAGES 45 THRU 54, PUBLIC RECORDS OF PALM BEACH COUNTY, FLORIDA AND
LYING IN SECTION 17, TOWNSHIP 45 SOUTH, RANGE 42 EAST, PALM BEACH COUNTY, FLORIDA.
SHEET 4 OF 5

MARCH, 1999

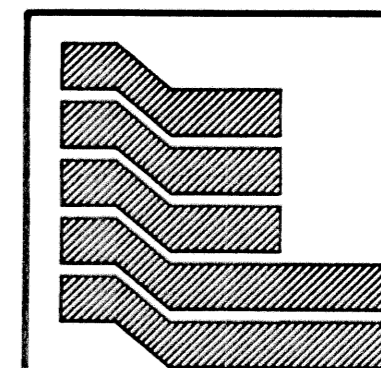
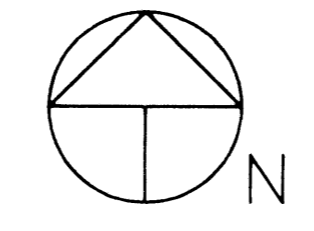
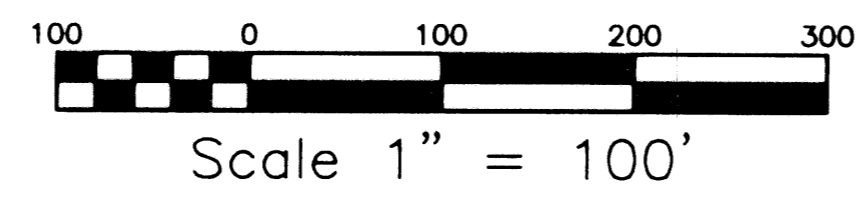


STATE OF FLORIDA ss
COUNTY OF PALM BEACH
THIS PLAT WAS FILED FOR RECORD AT
M. THIS DAY OF 19
AND DULY RECORDED IN PLAT BOOK NO.
ON PAGE
DOROTHY H. WILKEN, CLERK OF THE CIRCUIT COURT
BY _____ D.C.



SUBDIVISION Melrose PUD
BOOK 85 PAGE 13
FLOOD ZONE B
QUAD# 449
SE 83-40A
TAZ 1029
PUD NAME Melrose PUD

COORDINATE NOTE:
STATE PLANE COORDINATES SHOWN ARE GRID DATUM, NAD 83 1990
ADJUSTMENT, FLORIDA EAST ZONE, COORDINATE SYSTEM 1983 STATE
PLANE, TRANSVERSE MERCATOR PROJECTION
LINEAR UNIT = US SURVEY FEET
ALL DISTANCES ARE GROUND
SCALE FACTOR = 1.000232
GROUND DISTANCE X SCALE FACTOR = GRID DISTANCE
N 00°36'13"W (PLAT BEARING) 00°21'03" COUNTERCLOCKWISE ROTATION PLAT TO GRID
N 00°57'16"W (GRID BEARING)



Landmark Surveying & Mapping Inc.
1850 Forest Hill Boulevard
Ph. (561) 433-5405 Suite 100 W.P.B. Florida
LB # 4396
MELROSE P.U.D. (VENETIAN ISLES)