

STATE OF FLORIDA  
COUNTY OF PALM BEACH  
THIS PLAT WAS FILED FOR  
RECORD \_\_\_\_\_ DAY OF \_\_\_\_\_  
AD, 1999 AND DULY RECORDED  
IN PLAT BOOK \_\_\_\_\_ ON PAGES  
\_\_\_\_\_ AND \_\_\_\_\_  
BY: DOROTHY H. WILKEN, CLERK  
D.C.

CIRCUIT COURT SEAL

LEGEND

- L ARC LENGTH
- AE ACCESS EASEMENT
- BE BUFFER EASEMENT
- Δ CENTRAL (DELTA) ANGLE
- CH CHORD
- DE DRAINAGE EASEMENT
- LAE LIMITED ACCESS EASEMENT
- LME LAKE MAINTENANCE EASEMENT
- LMAE LAKE MAINTENANCE ACCESS EASEMENT
- PUD PLANNED UNIT OF DEVELOPMENT
- (NR) NON-RADIAL
- ORB OFFICIAL RECORD BOOK
- PB PLAT BOOK
- PG(S) PAGE(S)
- R RADIUS
- (TYP) TYPICAL
- UE UTILITY EASEMENT
- PERMANENT REFERENCE MONUMENT
- FOUND # (SEE NOTE)
- PERMANENT REFERENCE MONUMENT
- SET LB-048
- PERMANENT CONTROL POINT
- SET LB-048
- ⊂ CENTERLINE

MATCH LINE SEE SHEET 9



FND PRM #3896  
0.22' N 0.29' W  
N 816991.7757  
E 933176.8164

FALLS COUNTRY CLUB  
PB 61, PGS 177-179

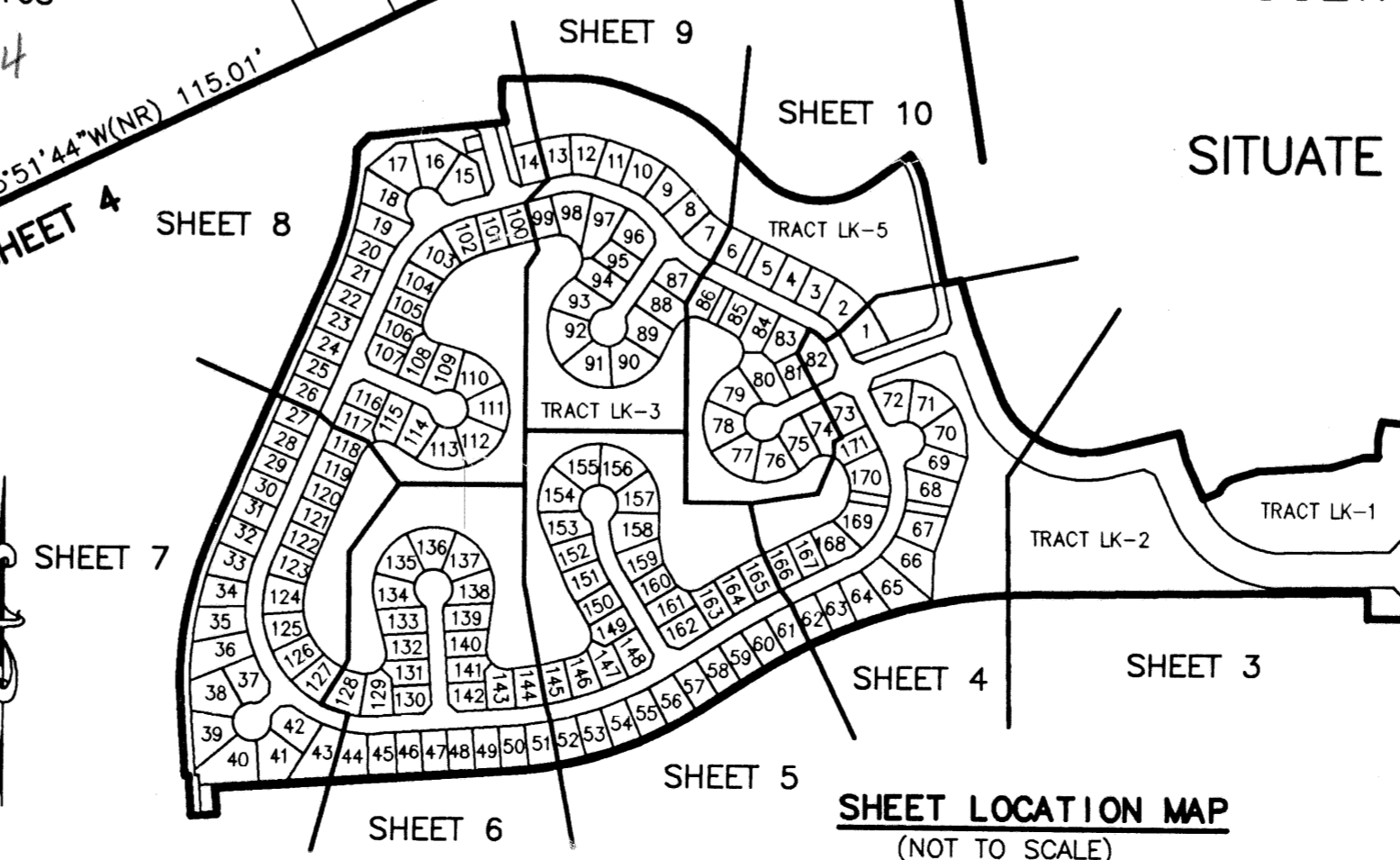
N 817099.8411  
E 933345.2628

WATER MANAGEMENT  
TRACT LK-3  
TO BE MAINTAINED BY THE  
SMITH DAIRY MASTER MAINTENANCE  
ASSOCIATION, INC.,  
ITS SUCCESSORS AND ASSIGNS

MATCH LINE SEE SHEET 10

# JOURNEY'S END PLAT ONE

PART OF SMITH DAIRY EAST P.U.D.  
BEING A PORTION OF SECTION 3, TOWNSHIP 45 SOUTH, RANGE 42 EAST  
TOGETHER WITH A REPLAT OF A PORTION OF BLOCKS 38 AND 39,  
PALM BEACH FARMS COMPANY, PLAT NO. 3,  
PLAT BOOK 2, PAGES 45 THROUGH 54  
SITUATE IN SECTIONS 3 & 4, TOWNSHIP 45 SOUTH, RANGE 42 EAST  
PALM BEACH COUNTY, FLORIDA  
JANUARY, 1999 SHEET 5 OF 10



THIS INSTRUMENT WAS PREPARED BY DAVID L. SMITH, P.S.M. IN THE OFFICES OF MOCK, ROOS & ASSOCIATES, INC., 5720 CORPORATE WAY, WEST PALM BEACH, FLORIDA 33407.

SCALE:  
1" = 40'  
P.A. NO.:  
98082.32  
DATE:  
NOVEMBER 1998  
DRAWING NO.:  
45-42-03-63

**MOCK • ROOS**  
ENGINEERS • SURVEYORS • PLANNERS

5720 Corporate Way, West Palm Beach, Florida 33407  
(561) 683-3113, fax 478-7248

**JOURNEY'S END PLAT ONE**  
PART OF SMITH DAIRY EAST P.U.D. BEING A PORTION OF SECTION 3, TOWNSHIP 45 SOUTH, RANGE 42 EAST, TOGETHER WITH A REPLAT OF A PORTION OF BLOCKS 38 & 39, PALM BEACH FARMS COMPANY, PLAT NO. 3, PLAT BOOK 2, PAGES 45 THROUGH 54 SECTIONS 3 & 4, TOWNSHIP 45 SOUTH, RANGE 42 EAST PALM BEACH COUNTY, FLORIDA

REV.: 1-18-99  
CAD FILE:  
WESTSM\_C/SW\_CRPO4

PRODUCTION  
PAGE 30  
FLOOD ZONE B  
QUAD# 34449  
SS B/C-1001  
TAZ 413  
PUD NAME Smith Dairy East