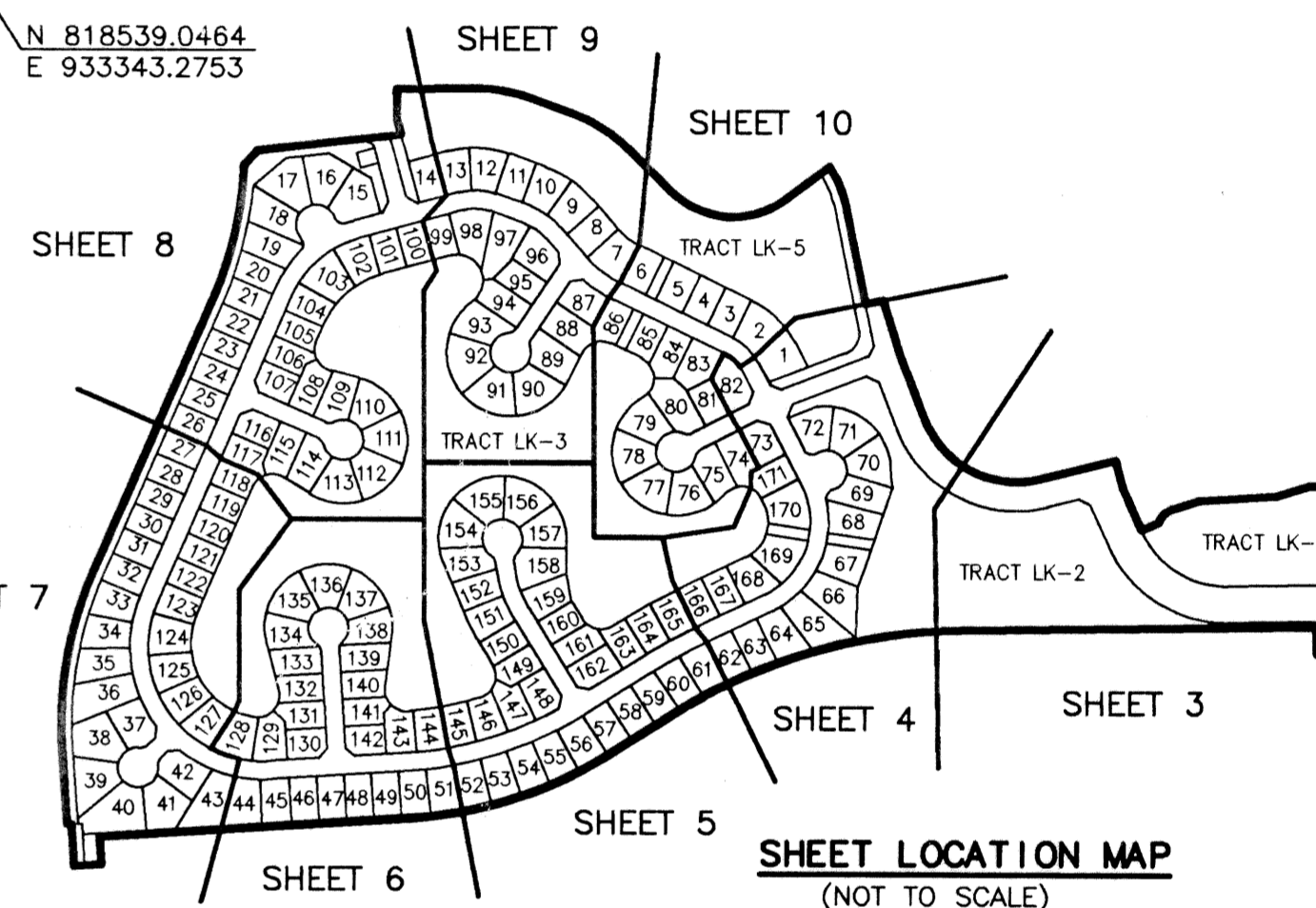
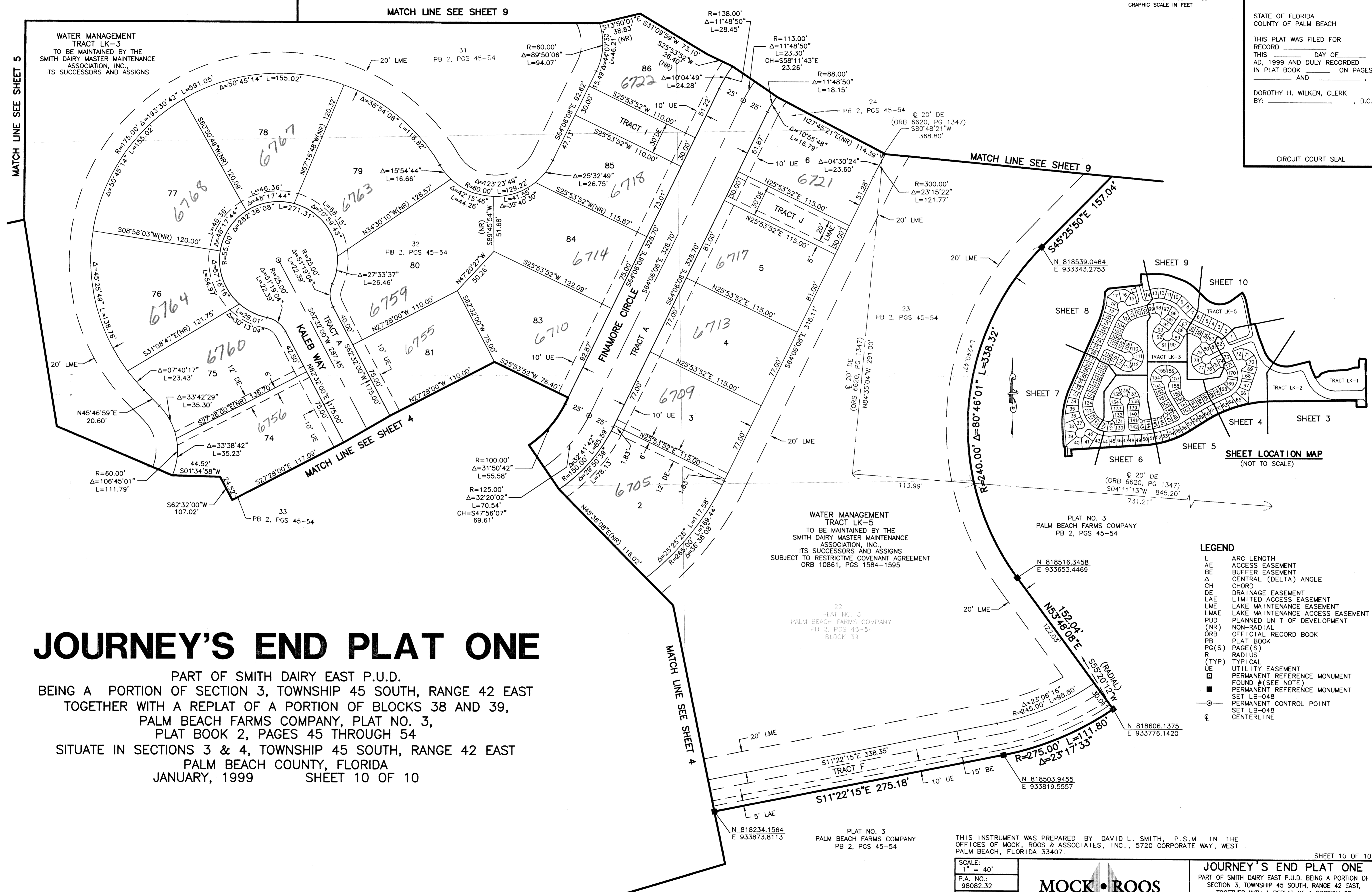


STATE OF FLORIDA
 COUNTY OF PALM BEACH

THIS PLAT WAS FILED FOR
 RECORD _____ DAY OF _____
 AD, 1999 AND DULY RECORDED
 IN PLAT BOOK _____ ON PAGES
 _____ AND _____

DOROTHY H. WILKEN, CLERK
 BY: _____, D.C.

CIRCUIT COURT SEAL



- LEGEND**
- L ARC LENGTH
 - AE ACCESS EASEMENT
 - BE BUFFER EASEMENT
 - Δ CENTRAL (DELTA) ANGLE
 - CH CHORD
 - DE DRAINAGE EASEMENT
 - LAE LIMITED ACCESS EASEMENT
 - LME LAKE MAINTENANCE EASEMENT
 - LMAE LAKE MAINTENANCE ACCESS EASEMENT
 - PUD PLANNED UNIT OF DEVELOPMENT
 - (NR) NON-RADIAL
 - ORB OFFICIAL RECORD BOOK
 - PB PLAT BOOK
 - PG(S) PAGE(S)
 - R RADIUS
 - (TYP) TYPICAL
 - UE UTILITY EASEMENT
 - PERMANENT REFERENCE MONUMENT FOUND # (SEE NOTE)
 - PERMANENT REFERENCE MONUMENT SET LB-048
 - PERMANENT CONTROL POINT SET LB-048
 - ⊙ CENTERLINE

JOURNEY'S END PLAT ONE

PART OF SMITH DAIRY EAST P.U.D.
 BEING A PORTION OF SECTION 3, TOWNSHIP 45 SOUTH, RANGE 42 EAST
 TOGETHER WITH A REPLAT OF A PORTION OF BLOCKS 38 AND 39,
 PALM BEACH FARMS COMPANY, PLAT NO. 3,
 PLAT BOOK 2, PAGES 45 THROUGH 54
 SITUATE IN SECTIONS 3 & 4, TOWNSHIP 45 SOUTH, RANGE 42 EAST
 PALM BEACH COUNTY, FLORIDA
 JANUARY, 1999 SHEET 10 OF 10

WATER MANAGEMENT
 TRACT LK-5
 TO BE MAINTAINED BY THE
 SMITH DAIRY MASTER MAINTENANCE
 ASSOCIATION, INC.
 ITS SUCCESSORS AND ASSIGNS
 SUBJECT TO RESTRICTIVE COVENANT AGREEMENT
 ORB 10861, PGS 1584-1595

PLAT NO. 3
 PALM BEACH FARMS COMPANY
 PB 2, PGS 45-54

PLAT NO. 3
 PALM BEACH FARMS COMPANY
 PB 2, PGS 45-54
 BLOCK 39

PLAT NO. 3
 PALM BEACH FARMS COMPANY
 PB 2, PGS 45-54

THIS INSTRUMENT WAS PREPARED BY DAVID L. SMITH, P.S.M. IN THE
 OFFICES OF MOCK, ROOS & ASSOCIATES, INC., 5720 CORPORATE WAY, WEST
 PALM BEACH, FLORIDA 33407.

| | |
|--------------|---------------|
| SCALE: | 1" = 40' |
| P.A. NO.: | 98082.32 |
| DATE: | NOVEMBER 1998 |
| DRAWING NO.: | 45-42-03-63 |

MOCK • ROOS
 ENGINEERS • SURVEYORS • PLANNERS

5720 Corporate Way, West Palm Beach, Florida 33407
 (561) 683-3113, fax 478-7248

JOURNEY'S END PLAT ONE
 PART OF SMITH DAIRY EAST P.U.D. BEING A PORTION OF
 SECTION 3, TOWNSHIP 45 SOUTH, RANGE 42 EAST,
 TOGETHER WITH A REPLAT OF A PORTION OF
 BLOCKS 38 & 39, PALM BEACH FARMS COMPANY,
 PLAT NO. 3, PLAT BOOK 2, PAGES 45 THROUGH 54
 SECTIONS 3 & 4, TOWNSHIP 45 SOUTH, RANGE 42 EAST
 PALM BEACH COUNTY, FLORIDA

SUBDIVISION: Journey's End Plat 1
 PAGE: 41
 FLOOD MAP: 170A
 FLOOD ZONE: B
 ZONING: PUD/SE
 QUAD: 34 49
 SE: 86-1001
 TAZ: 915
 PUB NAME: Smith Dairy East

REV.: 1-22-99
 CAD FILE: WESTSM_C/SM_CR09