

# CRYSTAL BAY

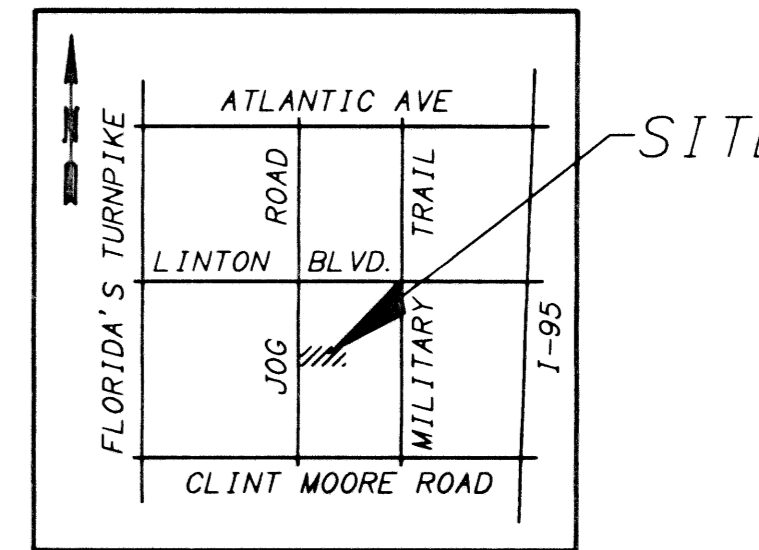
BEING A REPLAT OF TRACT A OF THE POLO CLUB EQUESTRIAN CENTER  
PART OF THE POLO CLUB P.U.D. AS RECORDED IN PLAT BOOK 61,  
PAGE 166 OF THE PUBLIC RECORDS OF PALM BEACH COUNTY, FLORIDA.  
IN PART OF SECTION 27, TOWNSHIP 46 SOUTH, RANGE 42 EAST  
PALM BEACH COUNTY, FLORIDA  
SHEET NO. 3 OF 5

GEE & JENSON  
ENGINEERS - ARCHITECTS - PLANNERS, INC.  
WEST PALM BEACH, FLORIDA  
MARCH 1997

UNPLATTED

0436-047

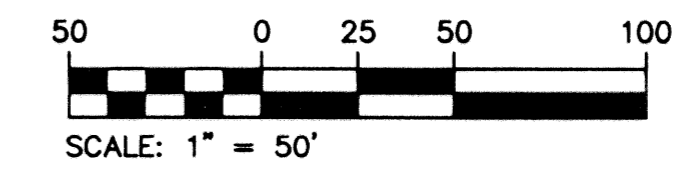
46



VICINITY MAP  
NOT TO SCALE

STATE OF FLORIDA  
COUNTY OF PALM BEACH  
This plat was filed for  
record at \_\_\_\_\_ M. this \_\_\_\_\_ day  
of \_\_\_\_\_ 1998, and duly  
recorded in Plat Book No. \_\_\_\_\_  
on Pages \_\_\_\_\_ thru \_\_\_\_\_.

DOROTHY H. WILKEN  
Clerk Circuit Court  
By \_\_\_\_\_ D. C.

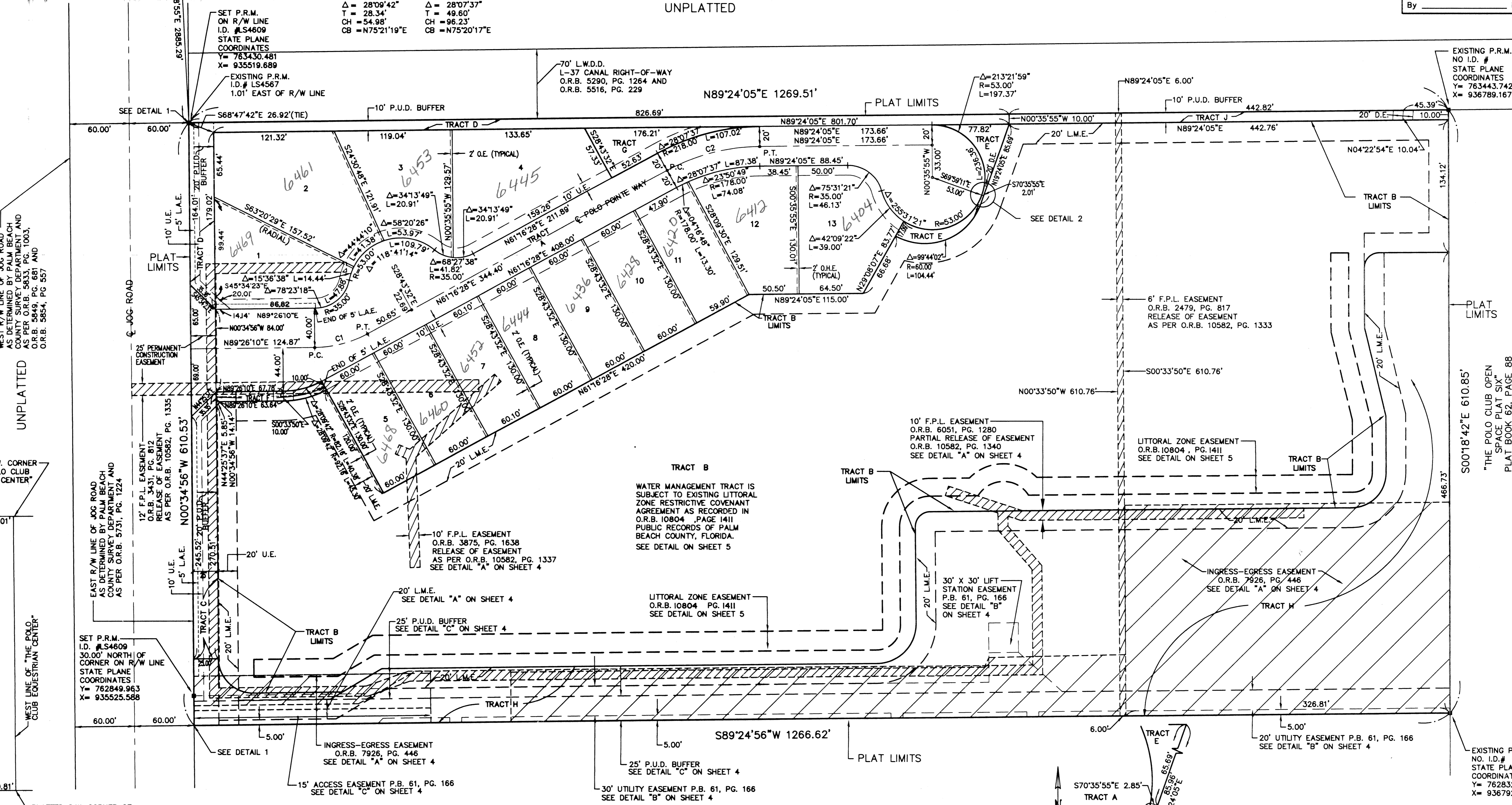


GEODETIC POINT KING  
N89°24'04"E 2619.92'

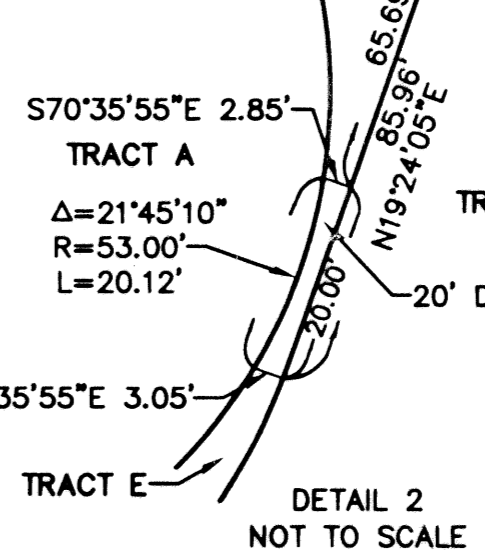
GEODETIC POINT DAKOTA  
PALM BEACH COUNTY POSITION  
NORTH (Y) = 766,311.957  
EAST (X) = 935,369.590

PALM BEACH COUNTY POSITION  
NORTH (Y) = 766,284.577  
EAST (X) = 932,749.731

Q CURVE	Q CURVE
C1	C2
R = 113.00'	R = 198.00'
L = 55.54'	L = 97.20'
Δ = 28°09'42"	Δ = 28°07'37"
T = 28.34'	T = 49.60'
CH = 54.98'	CH = 96.23'
CB = N75°21'19"E	CB = N75°20'17"E



DETAIL 1  
NOT TO SCALE



DETAIL 2  
NOT TO SCALE

NOTE: ALL LOT LINES ARE NON-RADIAL UNLESS OTHERWISE NOTED.

Crystal Bay  
PAGE 410  
FLOOD MAP # 2/15A  
QUAD # 37  
SEE 910-107  
PUD NAME  
ZONING SE  
ZIP CODE 33496  
POLO CLUB

COMPUTED M. HORAN  
DRAWN M. HORAN  
CHECKED  
APPROVED  
JOB NO. 95-238

THIS INSTRUMENT PREPARED BY:  
JAMES A. DAVIS, PSM  
FOR GEE & JENSON, ENGINEERS - ARCHITECTS - PLANNERS, INC.  
(FLORIDA CERTIFICATE OF AUTHORIZATION NUMBER LB2934)  
ONE HARVARD CIRCLE  
WEST PALM BEACH, FLORIDA 33409-1923