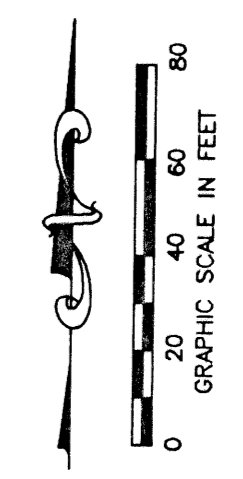


JOURNEY'S END PLAT TWO

0677-006

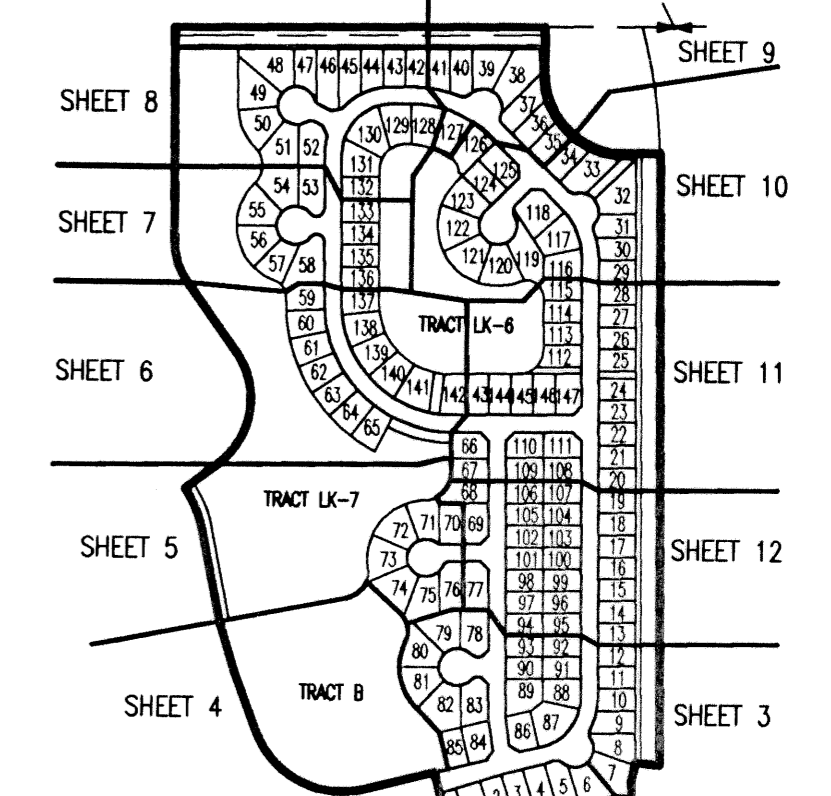
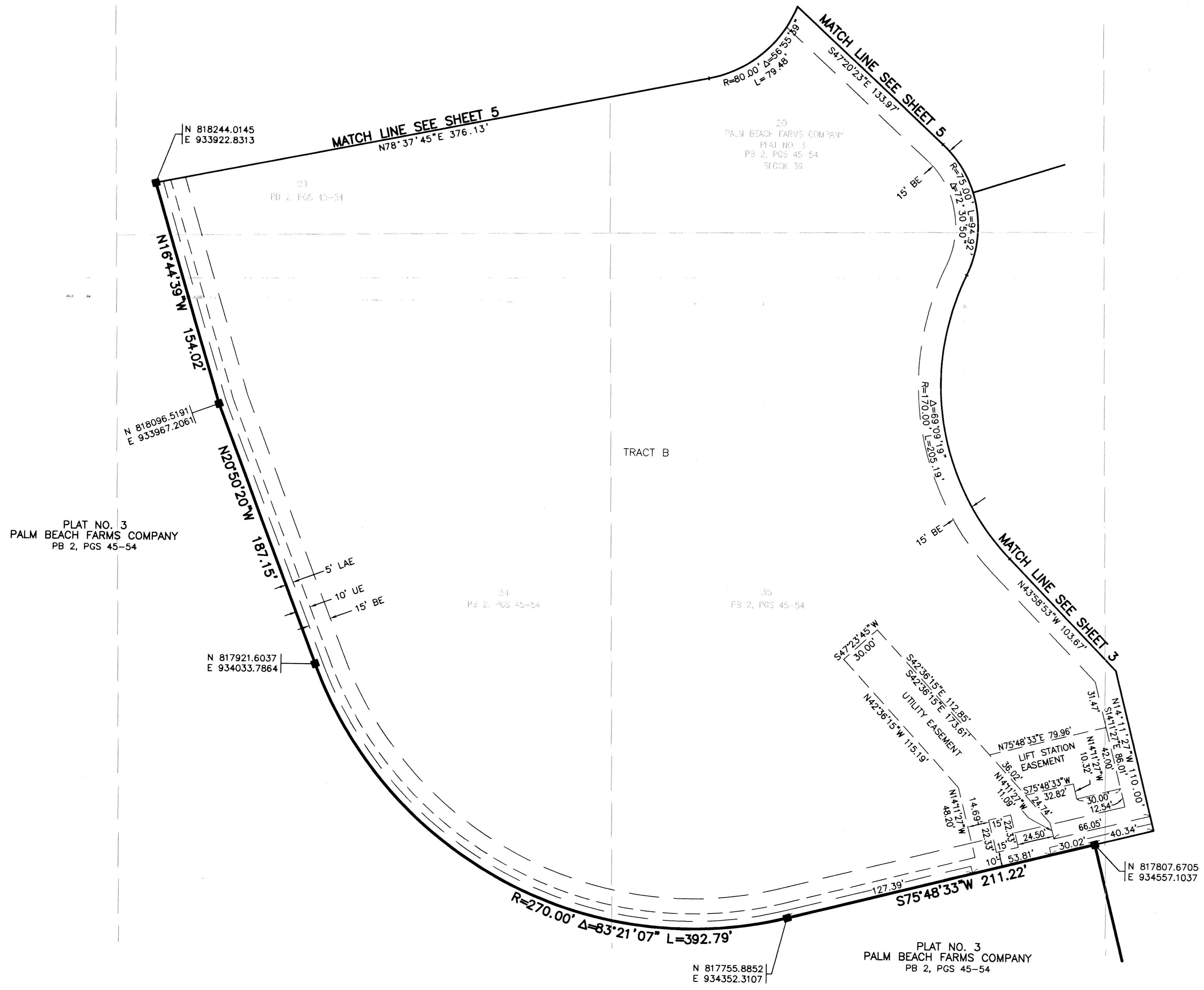
55

PART OF SMITH DAIRY EAST P.U.D.
 BEING A PORTION OF SECTION 3, TOWNSHIP 45 SOUTH, RANGE 42 EAST
 TOGETHER WITH A REPLAT OF A PORTION OF BLOCK 39,
 PALM BEACH FARMS COMPANY, PLAT NO. 3,
 PLAT BOOK 2, PAGES 45 THROUGH 54
 SITUATE IN SECTION 3, TOWNSHIP 45 SOUTH, RANGE 42 EAST
 PALM BEACH COUNTY, FLORIDA
 FEBRUARY, 1999 SHEET 4 OF 12



STATE OF FLORIDA
 COUNTY OF PALM BEACH
 THIS PLAT WAS FILED FOR
 RECORD _____
 THIS _____ DAY OF _____
 AD, 1999 AND DULY RECORDED
 IN PLAT BOOK _____ ON PAGES
 _____ AND _____
 DOROTHY H. WILKEN, CLERK
 BY: _____, D.C.

CIRCUIT COURT SEAL



SHEET LOCATION MAP
 (NOT TO SCALE)

LEGEND

- L ARC LENGTH
- AE ACCESS EASEMENT
- BE BUFFER EASEMENT
- Δ CENTRAL (DELTA) ANGLE
- CH CHORD
- DE DRAINAGE EASEMENT
- LAE LIMITED ACCESS EASEMENT
- LME LAKE MAINTENANCE EASEMENT
- LMAE LAKE MAINTENANCE ACCESS EASEMENT
- PUD PLANNED UNIT OF DEVELOPMENT
- (NR) NON-RADIAL
- ORB OFFICIAL RECORD BOOK
- PB PLAT BOOK
- PG(S) PAGE(S)
- R RADIUS
- (TYP) TYPICAL
- UE UTILITY EASEMENT
- PERMANENT REFERENCE MONUMENT
- ⊙ PERMANENT CONTROL POINT
- ⊕ SET LB-048
- ⊖ SET LB-048
- ⊘ CENTERLINE

THIS INSTRUMENT WAS PREPARED BY DAVID L. SMITH, P.S.M. IN THE OFFICES OF MOCK, ROOS & ASSOCIATES, INC., 5720 CORPORATE WAY, WEST PALM BEACH, FLORIDA 33407.

SCALE:	1" = 40'
P.A. NO.:	98082.53
DATE:	FEBRUARY 1999
DRAWING NO.:	45-42-03-68

MOCK • ROOS
 ENGINEERS • SURVEYORS • PLANNERS
 5720 Corporate Way, West Palm Beach, Florida 33407
 (561) 683-3113, fax 478-7248

JOURNEY'S END PLAT TWO
 PART OF SMITH DAIRY EAST P.U.D. BEING A PORTION OF SECTION 3, TOWNSHIP 45 SOUTH, RANGE 42 EAST, TOGETHER WITH A REPLAT OF A PORTION OF BLOCK 39, PALM BEACH FARMS COMPANY, PLAT NO. 3, PLAT BOOK 2, PAGES 45 THROUGH 54 SECTIONS 3, TOWNSHIP 45 SOUTH, RANGE 42 EAST PALM BEACH COUNTY, FLORIDA

SHEET 4 OF 12

SUBDIVISION: Journey's End Dairy East
 BOOK: 55
 FLOOD MAP: 170A
 ZONING: PUD/BE
 SE: 86-100 I
 TAZ: 943
 PUBNAME: Smith Dairy East

K:\west\westsm_e\dwg\SM_ARP03.dwg 06/07/99 10:30:59 AM EDT

REV.: 03-23-99
 CAD FILE:
 WESTSM_A/SM_ARP03