

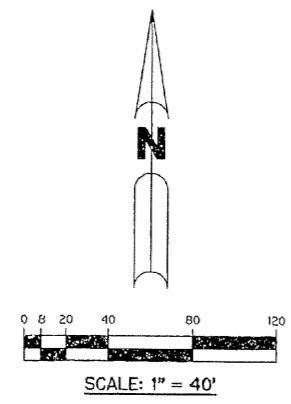
# RIVERWALK - PLAT TWELVE

A PARCEL OF LAND LYING IN SECTION 21, TOWNSHIP 43 SOUTH,  
RANGE 42 EAST, CITY OF WEST PALM BEACH,  
PALM BEACH COUNTY, FLORIDA.

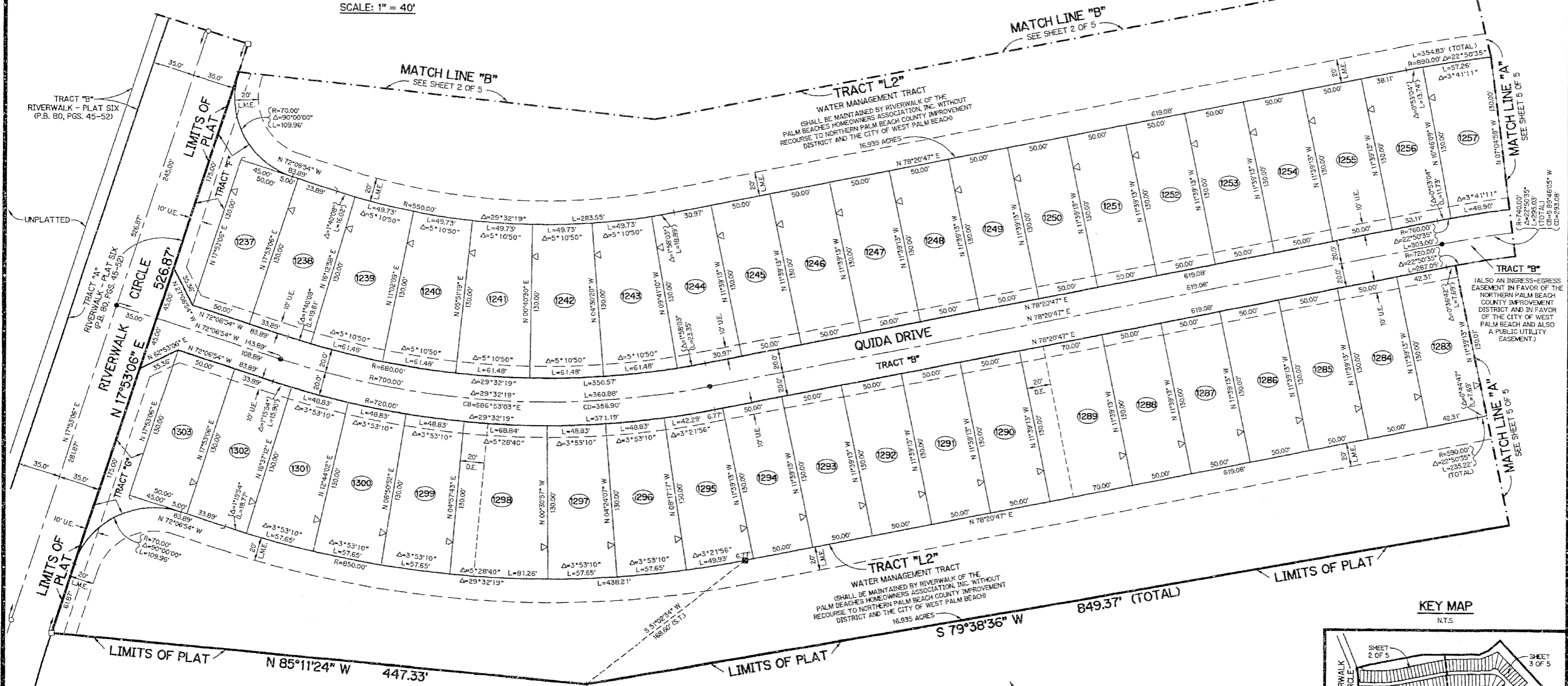
SHEET 4 OF 5      JANUARY, 1999

**LEGEND:**

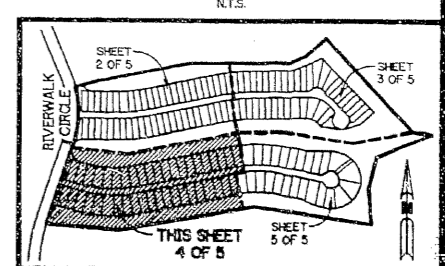
- - FOUND PERMANENT REFERENCE MONUMENT, FSM #4213
- - FOUND PERMANENT CONTROL POINT, PSM #4213
- - SET PERMANENT REFERENCE MONUMENT, LB-6674
- - PERMANENT CONTROL POINT, PSM #4215
- Δ - DELTA ANGLE
- CB - CHORD BEARING
- CD - CHORD DISTANCE
- CL - CENTERLINE
- DE - DRAINAGE EASEMENT
- L - ARC LENGTH
- L.M.E. - LAKE MAINTENANCE EASEMENT
- N.P.B.C.I.D. - NORTHERN PALM BEACH COUNTY IMPROVEMENT DISTRICT
- N.R. - NOT RADIAL
- N.T.S. - NOT TO SCALE
- O.R.B. - OFFICIAL RECORD BOOK
- P.B. - PLAT BOOK
- P.G.S. - PAGES
- P.S.M. - PROFESSIONAL SURVEYOR AND MAPPER
- R - RADIUS
- R.E. - RIVERWALK EASEMENT
- R/W - RIGHT-OF-WAY
- S.T. - SURVEY TIE
- U.E. - UTILITY EASEMENT
- ⊥ - INDICATES ZERO LOT LINE
- ⊗ - INDICATES COMMON BUILDING LINE



THIS INSTRUMENT PREPARED BY  
 PERRY C. WHITE, P.S.M. 4213, STATE OF FLORIDA  
 LAWSON, NOBLE AND WEBB, INC., LB-6674  
 ENGINEERS PLANNERS SURVEYORS  
 420 COLUMBIA DRIVE, SUITE 110  
 WEST PALM BEACH, FLORIDA



**KEY MAP**



A362 SHEET 4 OF 5