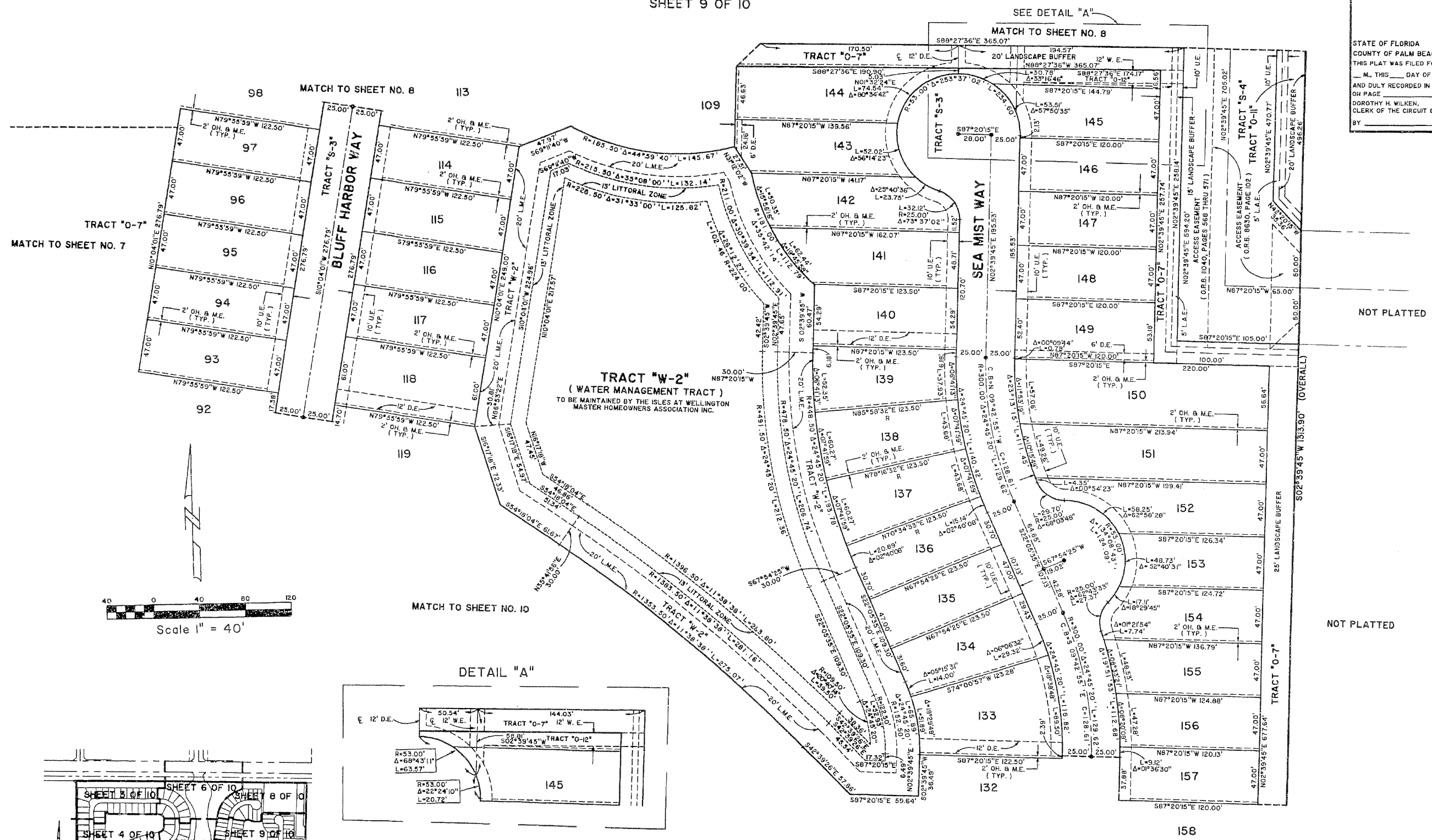


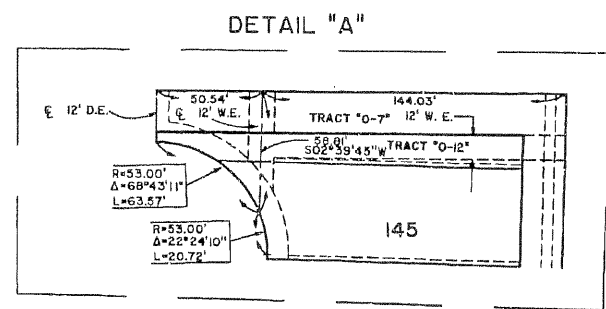
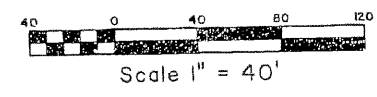
# THE ISLES AT WELLINGTON PLAT 1

A PORTION OF THE ORANGE POINT P.U.D.  
 LYING IN SECTION 26, TOWNSHIP 44 SOUTH, RANGE 41 EAST,  
 VILLAGE OF WELLINGTON, PALM BEACH COUNTY, FLORIDA.  
 SHEET 9 OF 10

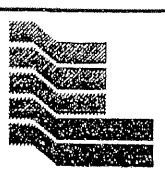
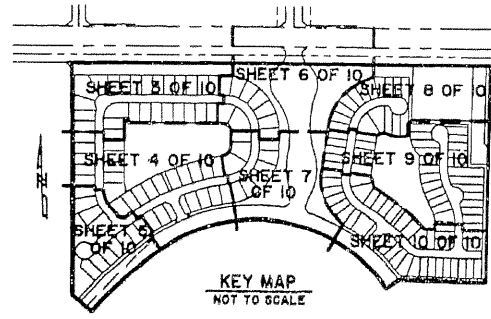
95



STATE OF FLORIDA SS  
 COUNTY OF PALM BEACH  
 THIS PLAT WAS FILED FOR RECORD AT \_\_\_\_\_  
 ON \_\_\_\_\_ DAY OF \_\_\_\_\_ 19\_\_\_\_  
 AND DULY RECORDED IN PLAT BOOK NO. \_\_\_\_\_  
 ON PAGE \_\_\_\_\_  
 DOROTHY H. WILKEN,  
 CLERK OF THE CIRCUIT COURT  
 BY \_\_\_\_\_ D.C.



**COORDINATE NOTE:**  
 STATE PLANE COORDINATES SHOWN ARE GRID DATUM, NAD 83 1990  
 ADJUSTMENT, FLORIDA EAST ZONE, COORDINATE SYSTEM 1983 STATE  
 PLANE, TRANSVERSE MERCATOR PROJECTION  
 LINEAR UNIT = US SURVEY FEET  
 ALL DISTANCES ARE GROUND  
 SCALE FACTOR = 1.000039  
 GROUND DISTANCE X SCALE FACTOR = GRID DISTANCE



**Landmark Surveying & Mapping Inc.**  
 1850 Forest Hill Boulevard  
 Ph. (561) 433-5405 Suite 100 W.P.B. Florida  
 LB # 4396

**THE ISLES AT WELLINGTON PLAT 1**