

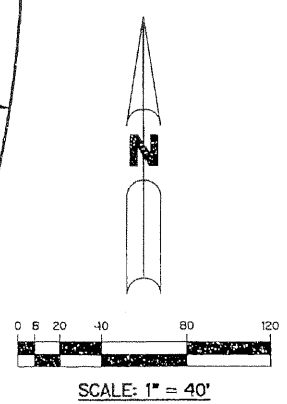
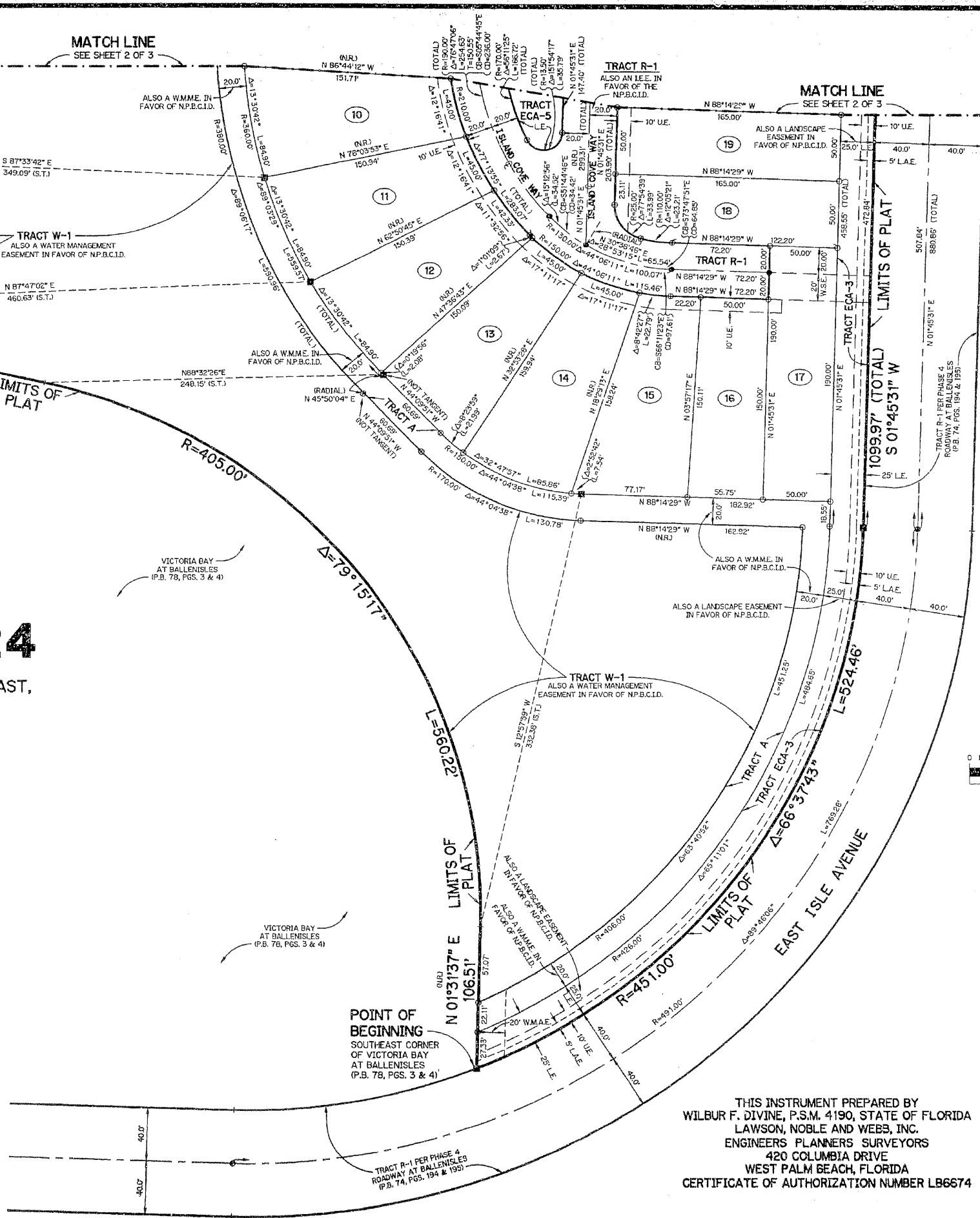
BALLENISLES POD 24

BEING A PORTION OF SECTION 13, TOWNSHIP 42 SOUTH, RANGE 42 EAST, CITY OF PALM BEACH GARDENS, PALM BEACH COUNTY, FLORIDA.

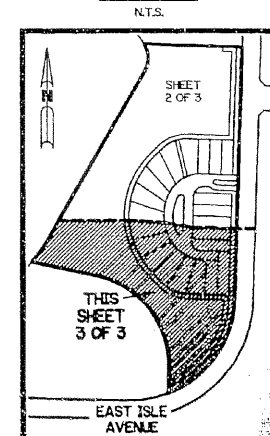
SHEET 3 OF 3 FEBRUARY, 1999

LEGEND:

- - SET PERMANENT REFERENCE MONUMENT, LB - 6674
- - FOUND PERMANENT REFERENCE MONUMENT AS NOTED
- - SET PERMANENT CONTROL POINT, LB - 6674
- Δ - DELTA ANGLE
- CB - CHORD BEARING
- C.D. - CHORD DISTANCE
- CL - CENTERLINE
- D.E. - DRAINAGE EASEMENT
- ECA-W - EXCLUSIVE COMMON AREA TRACT WITH NUMBER
- GC-H - GOLF COURSE TRACT WITH NUMBER
- I.E.E. - INGRESS - EGRESS EASEMENT
- L - ARC LENGTH
- L.A.E. - LIMITED ACCESS EASEMENT
- NP.B.C.I.D. - NORTHERN PALM BEACH COUNTY IMPROVEMENT DISTRICT
- N.R. - NOT RADIAL
- N.T.S. - NOT TO SCALE
- O.R.B. - OFFICIAL RECORD BOOK
- P.B. - PLAT BOOK
- P.G.S. - PAGES
- P.L.S. - PROFESSIONAL LAND SURVEYOR
- P.S.M. - PROFESSIONAL SURVEYOR AND MAPPER
- R - RADIUS
- R/W - RIGHT-OF-WAY
- S.T. - SURVEY TIE
- U.E. - UTILITY EASEMENT
- W.M.A.E. - WATER MANAGEMENT ACCESS EASEMENT
- W.M.M.E. - WATER MANAGEMENT MAINTENANCE EASEMENT
- L.E. - LANDSCAPE EASEMENT
- W.S.E. - WATER & SEWER EASEMENT
- - SET 5/16" IRON ROD WITH CAP LB-6674



KEY MAP



THIS INSTRUMENT PREPARED BY
 WILBUR F. DIVINE, P.S.M. 4190, STATE OF FLORIDA
 LAWSON, NOBLE AND WEBB, INC.
 ENGINEERS PLANNERS SURVEYORS
 420 COLUMBIA DRIVE
 WEST PALM BEACH, FLORIDA
 CERTIFICATE OF AUTHORIZATION NUMBER LB6674