

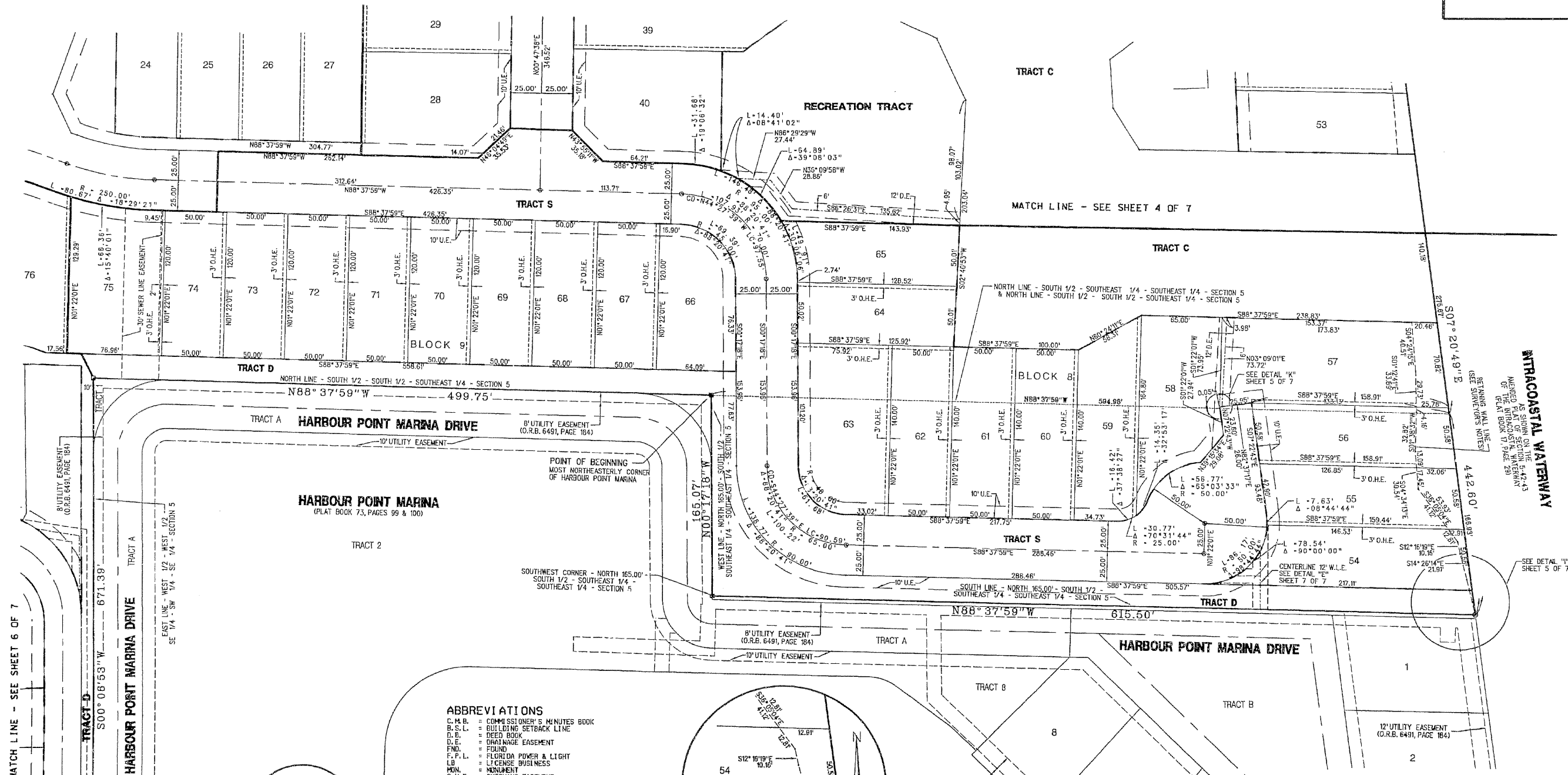
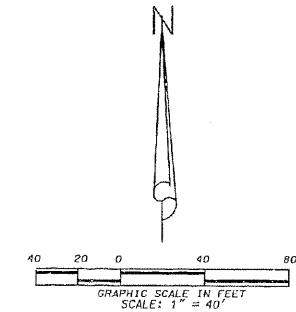
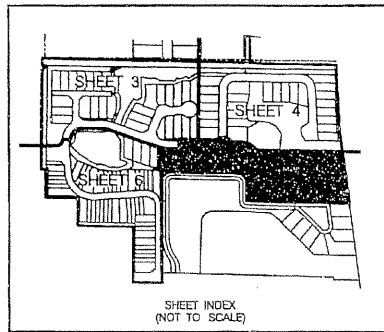
PROSPERITY HARBOR NORTH P.U.D.

Being a portion of Section 5, Township 42 South, Range 43 East,
Village of North Palm Beach, Palm Beach County, Florida.

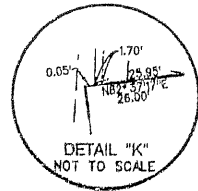
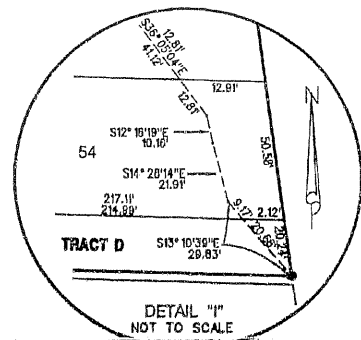
Sheet 5 of 7

June 1999

107



- ABBREVIATIONS**
- C.M.B. = COMMISSIONER'S MINUTES BOOK
 - B.S.L. = BUILDING SETBACK LINE
 - D.B. = DEED BOOK
 - O.E. = ORANGE EASEMENT
 - F.N.D. = FOUND
 - F.P.L. = FLORIDA POWER & LIGHT
 - L.B. = LICENSE BUSINESS
 - MON. = MONUMENT
 - O.H.E. = OVERHANG EASEMENT
 - O.R.B. = OFFICIAL RECORDS BOOK
 - P.B. = PLAY BOOK
 - P.C.P. = PERMANENT CONTROL POINT
 - P.S. = PAGES
 - P.O.B. = POINT OF BEGINNING
 - P.O.C. = POINT OF COMMENCEMENT
 - P.R.M. = PERMANENT REFERENCE MONUMENT
 - R.O.W. = RIGHT-OF-WAY
 - R.P.B. = ROAD PLAY BOOK
 - S.B.T.T. = SOUTHERN BELL TELEPHONE & TELEGRAPH
 - S.L.E. = SEWER LINE EASEMENT
 - U.E. = UTILITY EASEMENT
 - W.L.E. = WATER LINE EASEMENT
 - W.P.B.E. = WETLAND PRESERVATION BUFFER EASEMENT



LIDBERG LAND SURVEYING, INC.

472 W. PALM BEACH BOULEVARD, SUITE 200
WELLS FARGO BANK BUILDING, PALM BEACH, FLORIDA 33481

CAD. KAUSTATION\SECTION \ 05-42-43 \ 1358306\ SHEETS.DGN	FB.	PG.	JOB
REF. KAUSTATION\SECTION \ 05-42-43 \ 1358306\ 1358306.DGN	OFF. R.W. \ A.P.	DATE	08-135(306)
FLD.	DATE	10/05/98	
CKD. D.C.L.	SHEET 5 OF 7	DRW.	D95-135P