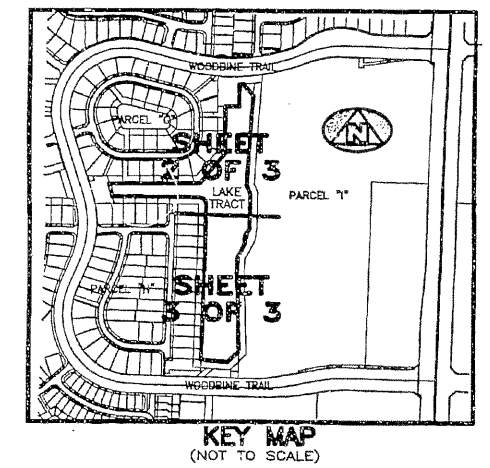
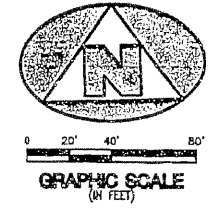
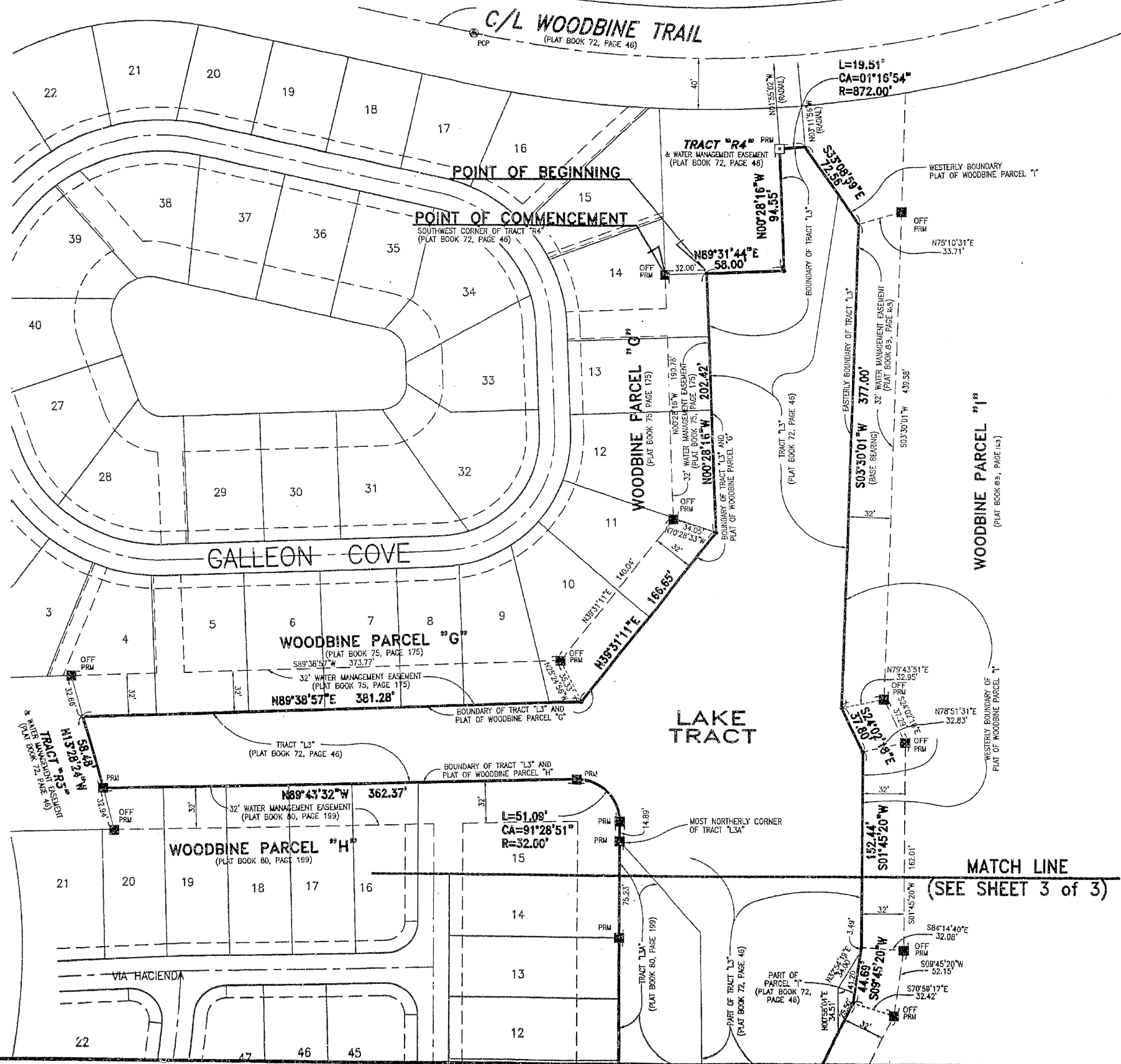


# WOODBINE LAKE TRACT

LYING IN THE NORTHEAST ONE-QUARTER OF SECTION 25, TOWNSHIP 42 SOUTH, RANGE 42 EAST, CITY OF RIVIERA BEACH, PALM BEACH COUNTY, FLORIDA, AND BEING A RE-PLAT OF PART OF TRACT "L3", AND PARCEL "I", WOODBINE, AND BEING A RE-PLAT OF TRACT "L3A", WOODBINE PARCEL "H", ACCORDING TO THE PLATS THEREOF, AS RECORDED IN PLAT BOOK 72, PAGE 46, AND IN PLAT BOOK 80, PAGE 199, RESPECTIVELY, PUBLIC RECORDS, PALM BEACH COUNTY, FLORIDA.



**SURVEYOR'S NOTES AND LEGEND:**

1. BEARINGS ARE BASED ON A BEARING OF S03°30'01\"/>

THIS INSTRUMENT WAS PREPARED BY WM. R. VAN CAMPEN, R.L.S., IN AND FOR THE OFFICES OF BENCH MARK LAND SURVEYING & MAPPING, INC., 4152 WEST BLUE HERON BOULEVARD, SUITE 121, RIVIERA BEACH, FLORIDA

**BENCH MARK LAND SURVEYING & MAPPING, INC.**  
 4152 W. BLUE HERON BOULEVARD • SUITE 121  
 RIVIERA BEACH • FLORIDA 33404  
 PHONE: (561) 948-2102 • LB. 2171 • FAX: (561) 844-9659  
 EMAIL: bmlm@bmlm.com WEB: http://members.aol.com/bmlm

**RECORD PLAT**  
**WOODBINE LAKE TRACT**

DWN	D.J.M.	FB	DATE	0-1-99	WO.#	P11
CKD			FILE	P11-1309	SCALE	1" = 40'
						SHEET 2 OF 3