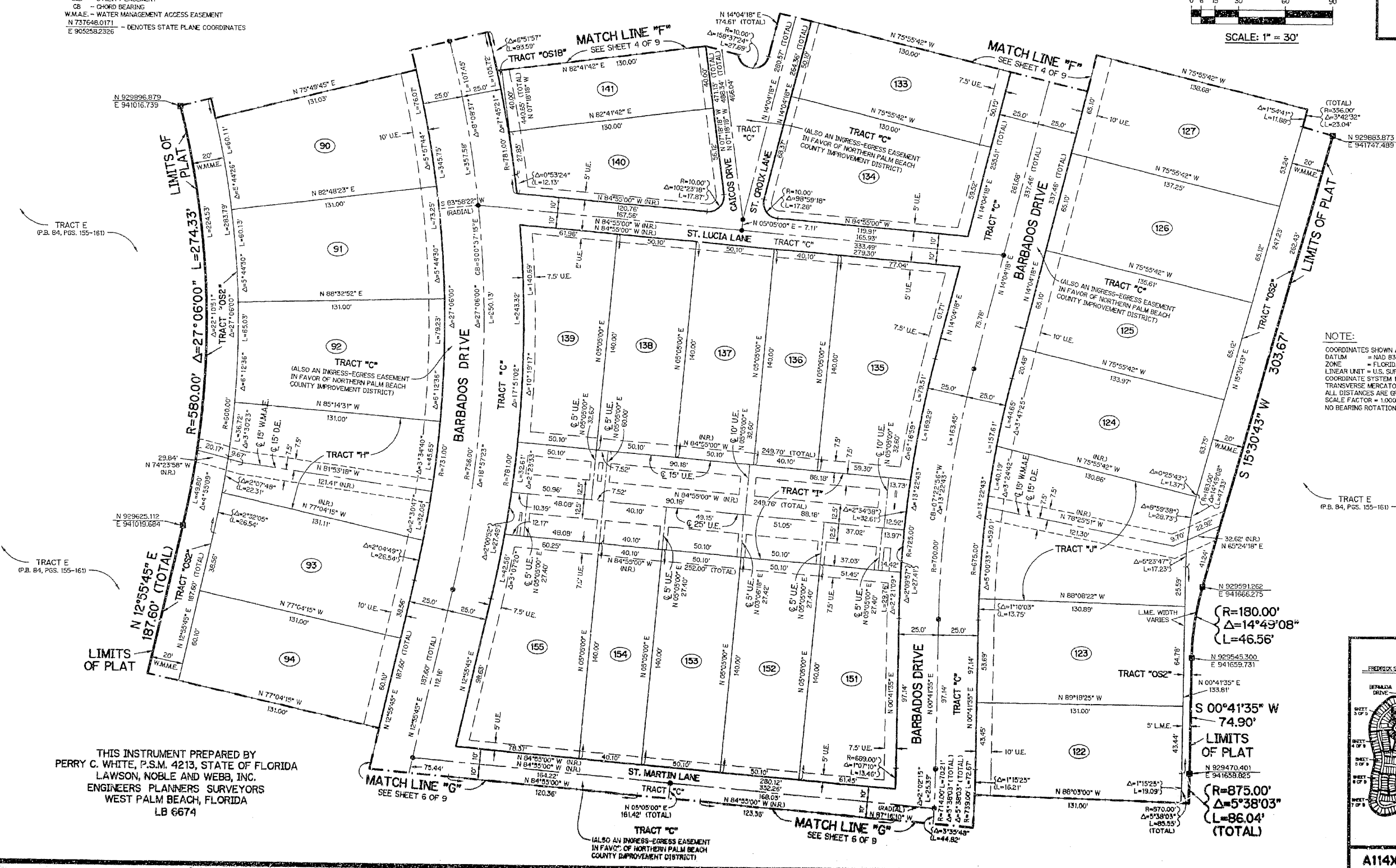
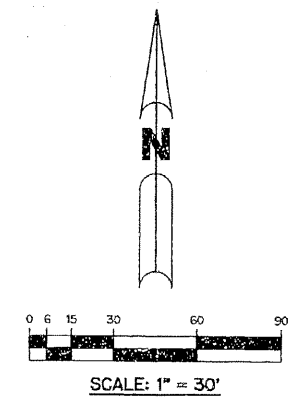


# THE ISLAND AT ABACOA

BEING A REPLAT OF ALL OF TRACTS RN1A AND RN1B ACCORDING TO THE PLAT OF ABACOA PLAT NO. 1, AS RECORDED IN PLAT BOOK 78, PAGES 145 THROUGH 163, INCLUSIVE, OF THE PUBLIC RECORDS OF PALM BEACH COUNTY, FLORIDA. LYING IN SECTION 23, TOWNSHIP 41 SOUTH, RANGE 42 EAST.

SHEET 5 OF 9 MAY, 1999

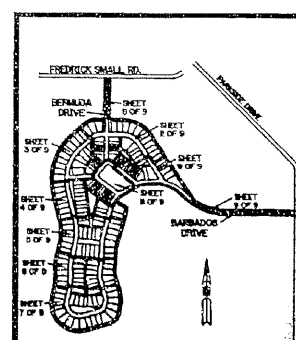
- LEGEND:**
- - FOUND PERMANENT REFERENCE MONUMENT, PSM #3915
  - - SET PERMANENT CONTROL POINT, PSM #4213
  - Δ - DELTA ANGLE
  - BT - BUFFER TRACT
  - CL - CENTERLINE
  - D.B. - DEED BOOK
  - D.E. - DRAINAGE EASEMENT
  - CKZ - CROWN ROOF EASEMENT
  - L - ARC LENGTH
  - W.M.M.E. - WATER MANAGEMENT MAINTENANCE EASEMENT
  - NR - NOT RADIAL
  - N.T.S. - NOT TO SCALE
  - OS - OPEN SPACE TRACT
  - O.R.B. - OFFICIAL RECORD BOOK
  - P.B. - PLAT BOOK
  - PGS. - PAGES
  - P.S.M. - PROFESSIONAL SURVEYOR AND MAPPER
  - R - RADIUS
  - REZ - RESIDENTIAL
  - R/W - RIGHT-OF-WAY
  - U.E. - UTILITY EASEMENT
  - CB - CHORD BEARING
  - W.M.A.E. - WATER MANAGEMENT ACCESS EASEMENT
  - N 73°46'01.71" E 905258.2326 - DENOTES STATE PLANE COORDINATES



**NOTE:**  
 COORDINATES SHOWN ARE GRID COORDINATES  
 DATUM = NAD 83 (1990 ADJUSTMENT)  
 ZONE = FLORIDA EAST ZONE  
 LINEAR UNIT = U.S. SURVEY FEET  
 COORDINATE SYSTEM 1983 STATE PLANE  
 TRANSVERSE MERCATOR PROJECTION  
 ALL DISTANCES ARE GROUND  
 SCALE FACTOR = 1.0000177  
 NO BEARING ROTATION - PLAT = GRID

THIS INSTRUMENT PREPARED BY  
 PERRY C. WHITE, P.S.M. 4213, STATE OF FLORIDA  
 LAWSON, NOBLE AND WEBB, INC.  
 ENGINEERS PLANNERS SURVEYORS  
 WEST PALM BEACH, FLORIDA  
 LB 6674

**KEY MAP**  
 N.T.S.



A114X SHEET 5 OF 9