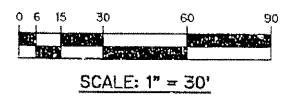
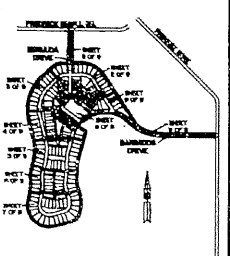


THE ISLAND AT ABACOA

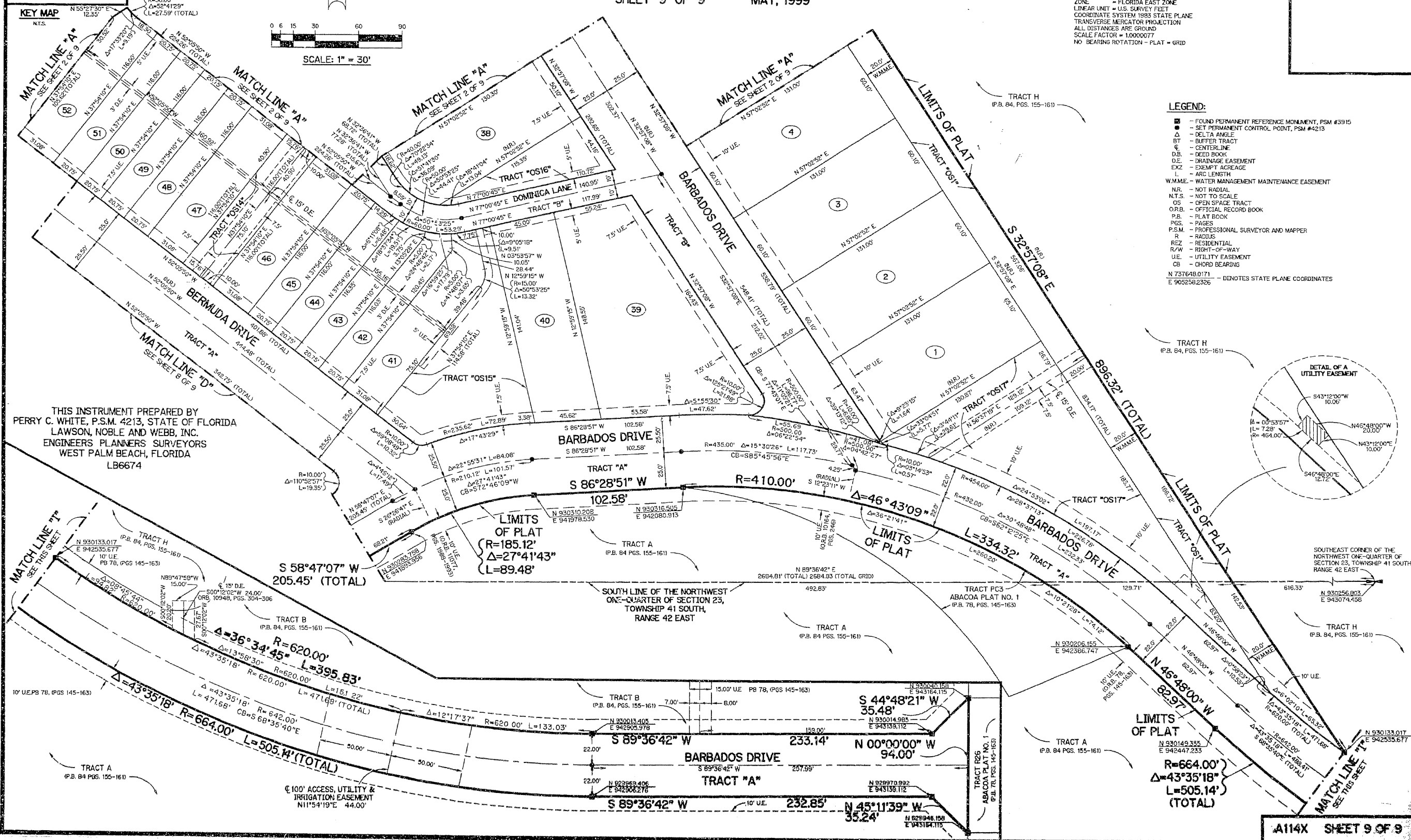
BEING A REPLAT OF ALL OF TRACTS RN1A AND RN1B ACCORDING TO THE PLAT OF ABACOA PLAT NO. 1, AS RECORDED IN PLAT BOOK 78, PAGES 145 THROUGH 163, INCLUSIVE, OF THE PUBLIC RECORDS OF PALM BEACH COUNTY, FLORIDA, LYING IN SECTION 23, TOWNSHIP 41 SOUTH, RANGE 42 EAST.

SHEET 9 OF 9 MAY, 1999

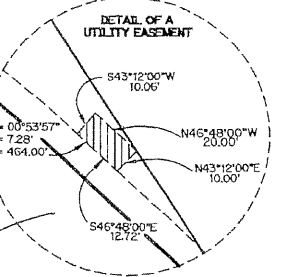


NOTE:
COORDINATES SHOWN ARE GRID COORDINATES
DATUM = NAD 83 (1983 ADJUSTMENT)
ZONE = FLORIDA EAST ZONE
LINEAR UNIT = U.S. SURVEY FEET
COORDINATE SYSTEM 1983 STATE PLANE
TRANSVERSE MERCATOR PROJECTION
ALL DISTANCES ARE GROUND
SCALE FACTOR = 1.0000077
NO BEARING ROTATION - PLAT = GRID

- LEGEND:**
- - FOUND PERMANENT REFERENCE MONUMENT, PSM #3915
 - - SET PERMANENT CONTROL POINT, PSM #4213
 - Δ - DELTA ANGLE
 - BT - BUFFER TRACT
 - CL - CENTERLINE
 - D.B. - DEED BOOK
 - D.E. - DRAINAGE EASEMENT
 - EXZ - EXEMPT ACREAGE
 - L - ARC LENGTH
 - W.M.M.E. - WATER MANAGEMENT MAINTENANCE EASEMENT
 - N.R. - NOT RADIAL
 - N.T.S. - NOT TO SCALE
 - OS - OPEN SPACE TRACT
 - O.R.B. - OFFICIAL RECORD BOOK
 - P.B. - PLAT BOOK
 - PGS. - PAGES
 - P.S.M. - PROFESSIONAL SURVEYOR AND MAPPER
 - R - RADIUS
 - REZ - RESIDENTIAL
 - R/W - RIGHT-OF-WAY
 - U.E. - UTILITY EASEMENT
 - CB - CHORD BEARING
 - N 737649.0171 E 905258.2326 - DENOTES STATE PLANE COORDINATES



THIS INSTRUMENT PREPARED BY
PERRY C. WHITE, P.S.M. 4213, STATE OF FLORIDA
LAWSON, NOBLE AND WEBB, INC.
ENGINEERS PLANNERS SURVEYORS
WEST PALM BEACH, FLORIDA
LB6674



SOUTHEAST CORNER OF THE
NORTHWEST ONE-QUARTER OF
SECTION 23, TOWNSHIP 41 SOUTH,
RANGE 42 EAST