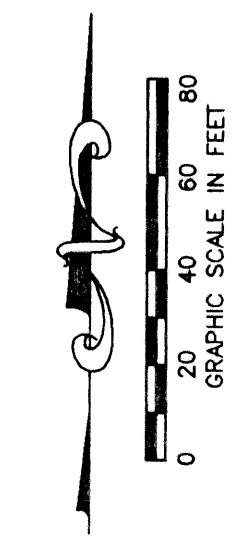


STATE OF FLORIDA
 COUNTY OF PALM BEACH

THIS PLAT WAS FILED FOR
 RECORD _____ DAY OF _____
 AD, 1999 AND DULY RECORDED
 IN PLAT BOOK _____ ON PAGES
 _____ AND _____

DOROTHY H. WILKEN, CLERK
 BY: _____, D.C.



CIRCUIT COURT SEAL

ADDISON RESERVE PARCEL TWELVE

PART OF GLENEAGLES/POLO CLUB WEST P.U.D.
 BEING A REPLAT OF TRACT 12
 "ADDISON RESERVE PLAT FOUR"
 (P.B. 79, PGS. 76-81)
 SITUATE IN SECTION 28, TOWNSHIP 46 SOUTH, RANGE 42 EAST
 PALM BEACH COUNTY, FLORIDA
 MARCH, 1999 SHEET 3 OF 3

LEGEND

BE	BUFFER EASEMENT
Δ	CENTRAL (DELTA) ANGLE
CH	CHORD
DE	DRAINAGE EASEMENT
FPL	FLORIDA POWER & LIGHT
L	ARC LENGTH
LAE	LIMITED ACCESS EASEMENT
LE	LANDSCAPE EASEMENT
LME	LAKE MAINTENANCE EASEMENT
LMAE	LAKE MAINTENANCE ACCESS EASEMENT
LWDD	LAKE WORTH DRAINAGE DISTRICT
(NR)	NON-RADIAL
OHME	OVERHANG AND MAINTENANCE EASEMENT
ORB	OFFICIAL RECORD BOOK
PB	PLAT BOOK
PG(S)	PAGE(S)
PUD	PLANNED UNIT DEVELOPMENT
R	RADIUS
(TYP)	TYPICAL
UE	UTILITY EASEMENT
■	PERMANENT REFERENCE MONUMENT FOUND PLS# 4763
●	PERMANENT REFERENCE MONUMENT SET PLS# 4763
○	PERMANENT CONTROL POINT SET PLS# 4763
⊖	CENTERLINE

- NOTES:**
1. THE COORDINATES SHOWN HEREON ARE STATE PLANE GRID COORDINATES ACCORDING TO THE TRANSVERSE MERCATOR PROJECTION OF THE FLORIDA EAST ZONE, N.A.D. 83, PER THE 1990 ADJUSTMENT.
 2. THE LINEAR DIMENSIONS SHOWN HEREON ARE GROUND DISTANCES IN U.S. FEET AND DECIMAL PARTS THEREOF.
 3. THE GROUND DISTANCE TO GRID DISTANCE SCALE FACTOR IS 1.0000338 (GROUND DISTANCE X SCALE FACTOR = GRID DISTANCE).
 4. ALL LINES WHICH INTERSECT CURVES ARE RADIAL TO THOSE CURVES UNLESS OTHERWISE NOTED.

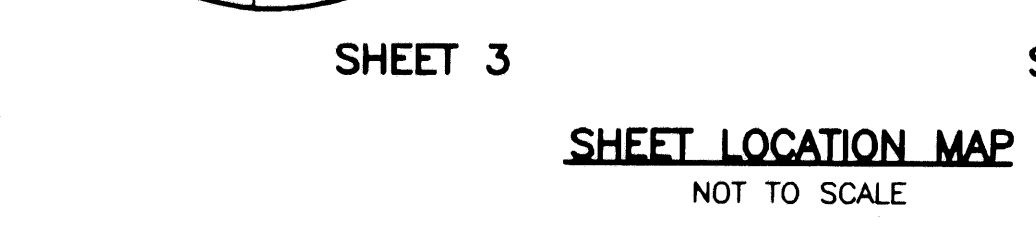
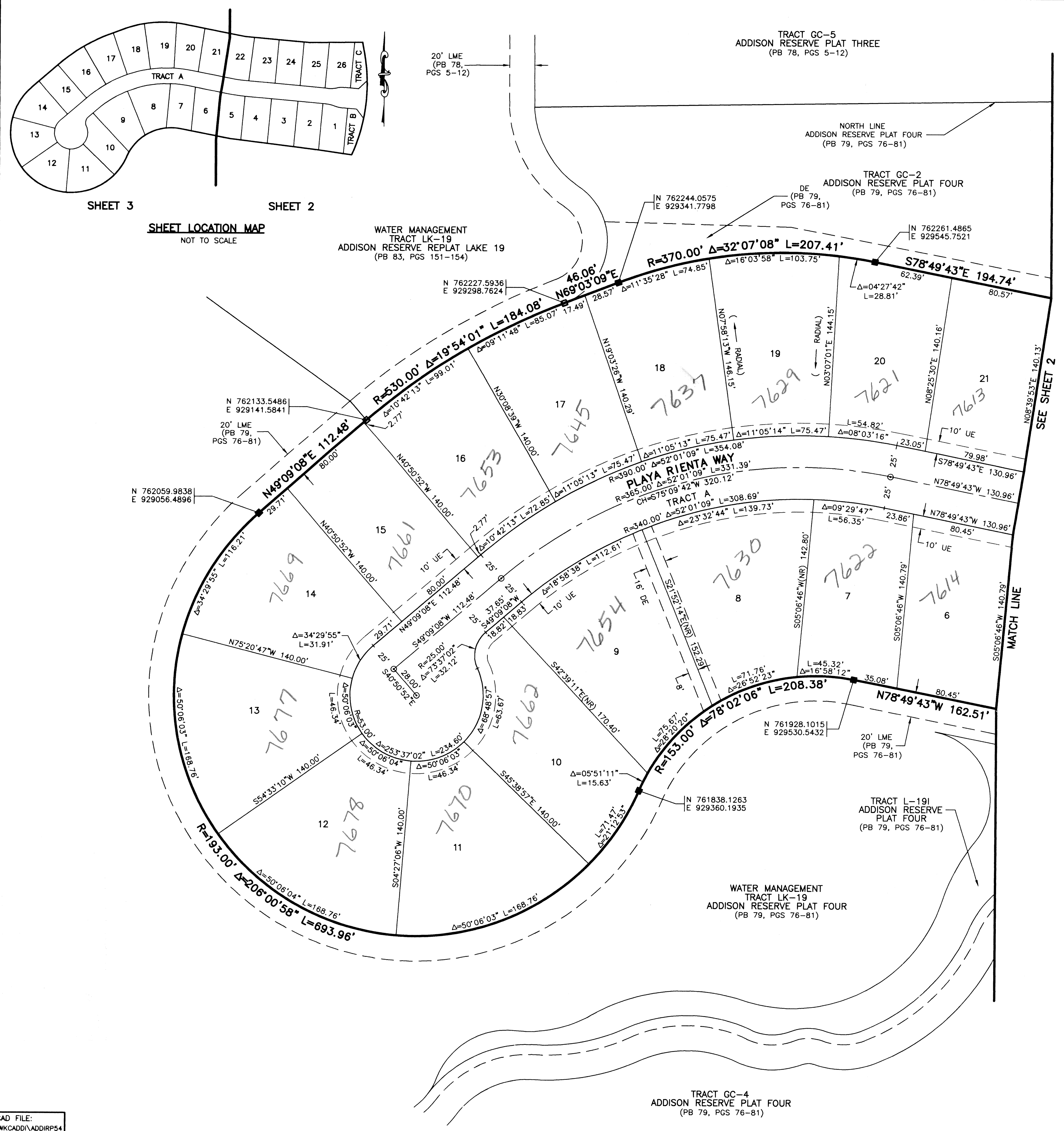
THIS INSTRUMENT WAS PREPARED BY MARY HANNA CLODFELTER, P.S.M., IN THE OFFICES OF MOCK, ROOS & ASSOCIATES, INC., 5720 CORPORATE WAY, WEST PALM BEACH, FLORIDA 33407.

SCALE:
 1" = 40'
 P.A. NO.:
 94182.35
 DATE:
 MARCH 1999
 DRAWING NO.
 46-42-28-182

MOCK • ROOS
 ENGINEERS • SURVEYORS • PLANNERS
 5720 Corporate Way, West Palm Beach, Florida 33407
 (561) 683-3113, fax 478-7248

SHEET 3 OF 3

**ADDISON RESERVE
 PARCEL TWELVE**
 PART OF GLENEAGLES/POLO CLUB WEST P.U.D.
 BEING A REPLAT OF TRACT 12
 "ADDISON RESERVE PLAT FOUR"
 (P.B. 79, PGS. 76-81)
 SITUATE IN SECTION 28, TOWNSHIP 46 SOUTH, RANGE 42 EAST
 PALM BEACH COUNTY, FLORIDA



ADDISON Reserve
 PAGE 141
 FLOODING # 215A
 ZONING RT5/SE
 QUAD # 59
 SE 80-215
 TAZ 478
 PUD NAME Polo Club West

K:\work\TKWCADD\dwg\ADDRP54.dwg 05/13/99 01:08:26 PM EDT

CAD FILE:
 TKWCADD\ADDRP54

TRACT GC-4
 ADDISON RESERVE PLAT FOUR
 (PB 79, PGS 76-81)

TRACT L-191
 ADDISON RESERVE
 PLAT FOUR
 (PB 79, PGS 76-81)

WATER MANAGEMENT
 TRACT LK-19
 ADDISON RESERVE PLAT FOUR
 (PB 79, PGS 76-81)

PLAYA RIENTA WAY
 TRACT A
 R=365.00' Δ=52°01'09" L=331.39'
 CH=575°09'42"W 320.12'

TRACT GC-5
 ADDISON RESERVE PLAT THREE
 (PB 78, PGS 5-12)

NORTH LINE
 ADDISON RESERVE PLAT FOUR
 (PB 79, PGS 76-81)

TRACT GC-2
 ADDISON RESERVE PLAT FOUR
 (PB 79, PGS 76-81)

WATER MANAGEMENT
 TRACT LK-19
 ADDISON RESERVE REPLAT LAKE 19
 (PB 83, PGS 151-154)

N 762133.5486
 E 929141.5841
 20' LME
 (PB 79,
 PGS 76-81)

N 762059.9838
 E 929056.4896

N 761928.1015
 E 929530.5432
 20' LME
 (PB 79,
 PGS 76-81)

N 761838.1263
 E 929360.1935

20' LME
 (PB 78,
 PGS 5-12)