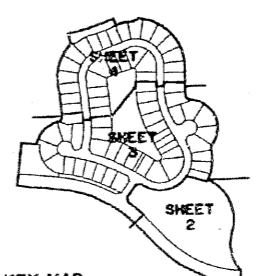


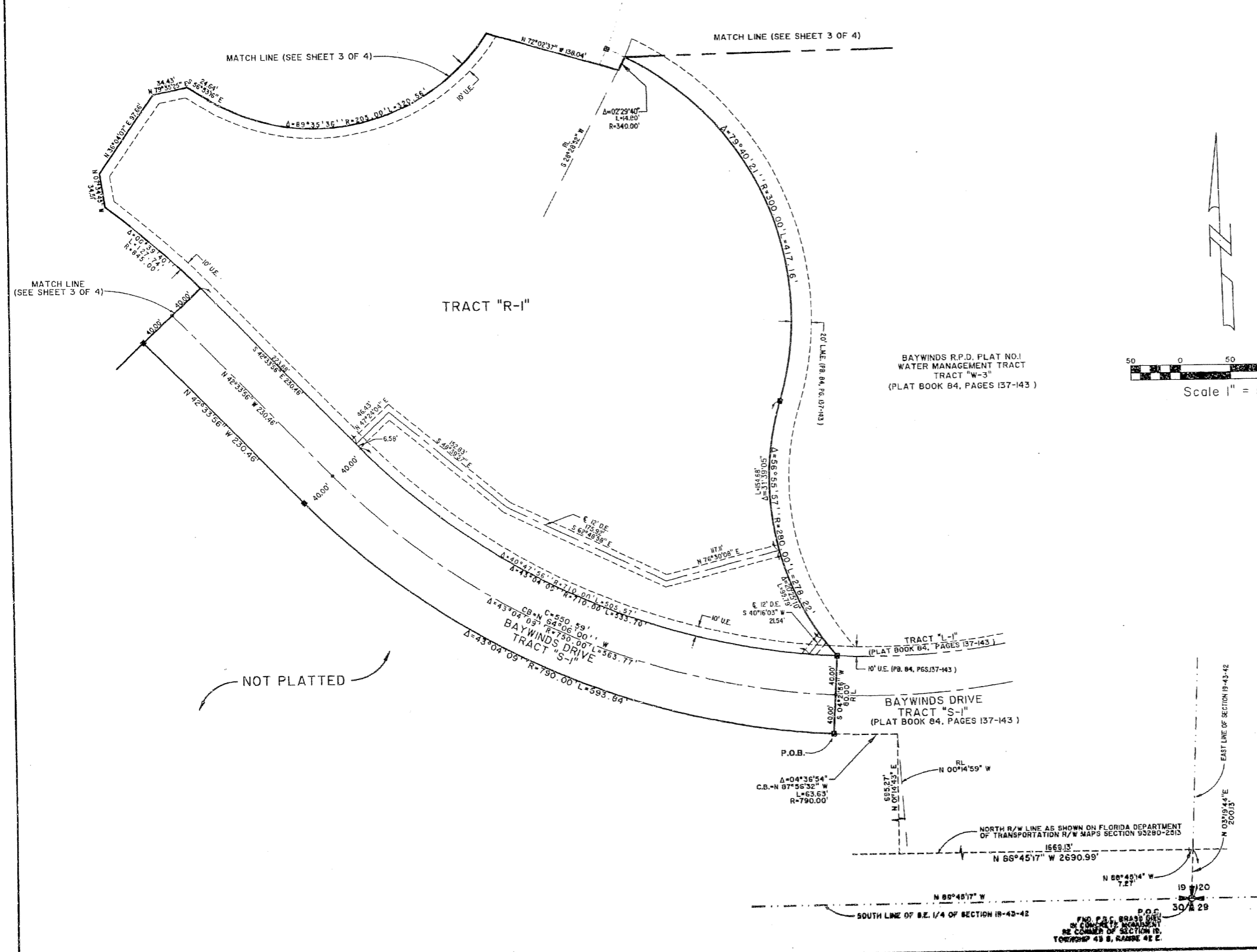

BAYWINDS R.P.D. PLAT NO. 2

BEING A PORTION OF SECTION 19, TOWNSHIP 43 SOUTH, RANGE 42 EAST AND THE REPLAT OF TRACT "L-2"
 BAYWINDS R.P.D. PLAT NO. 1 AS RECORDED IN PLAT BOOK 84, PAGES 137 THROUGH 143, PUBLIC RECORDS
 OF PALM BEACH COUNTY, FLORIDA, ALL LYING IN SECTION 19, TOWNSHIP 43 SOUTH, RANGE 42 EAST,
 CITY OF WEST PALM BEACH, PALM BEACH COUNTY, FLORIDA
 SHEET 2 OF 4 JANUARY, 1999

143



STATE OF FLORIDA
 COUNTY OF PALM BEACH
 THIS PLAT WAS FILED FOR RECORD AT _____
 ON _____ DAY OF _____ 19____
 AND DULY RECORDED IN PLAT BOOK NO. _____
 ON PAGE _____
 DOROTHY H. WILKEL, CLERK OF THE CIRCUIT COURT
 BY _____ D.C.

Landmark Surveying & Mapping Inc.
 1850 Forest Hill Boulevard
 Ph. (561) 433-5405 Suite 100 W.P.B. Florida
 LB# 4396

BAYWINDS R.P.D. PLAT NO. 2