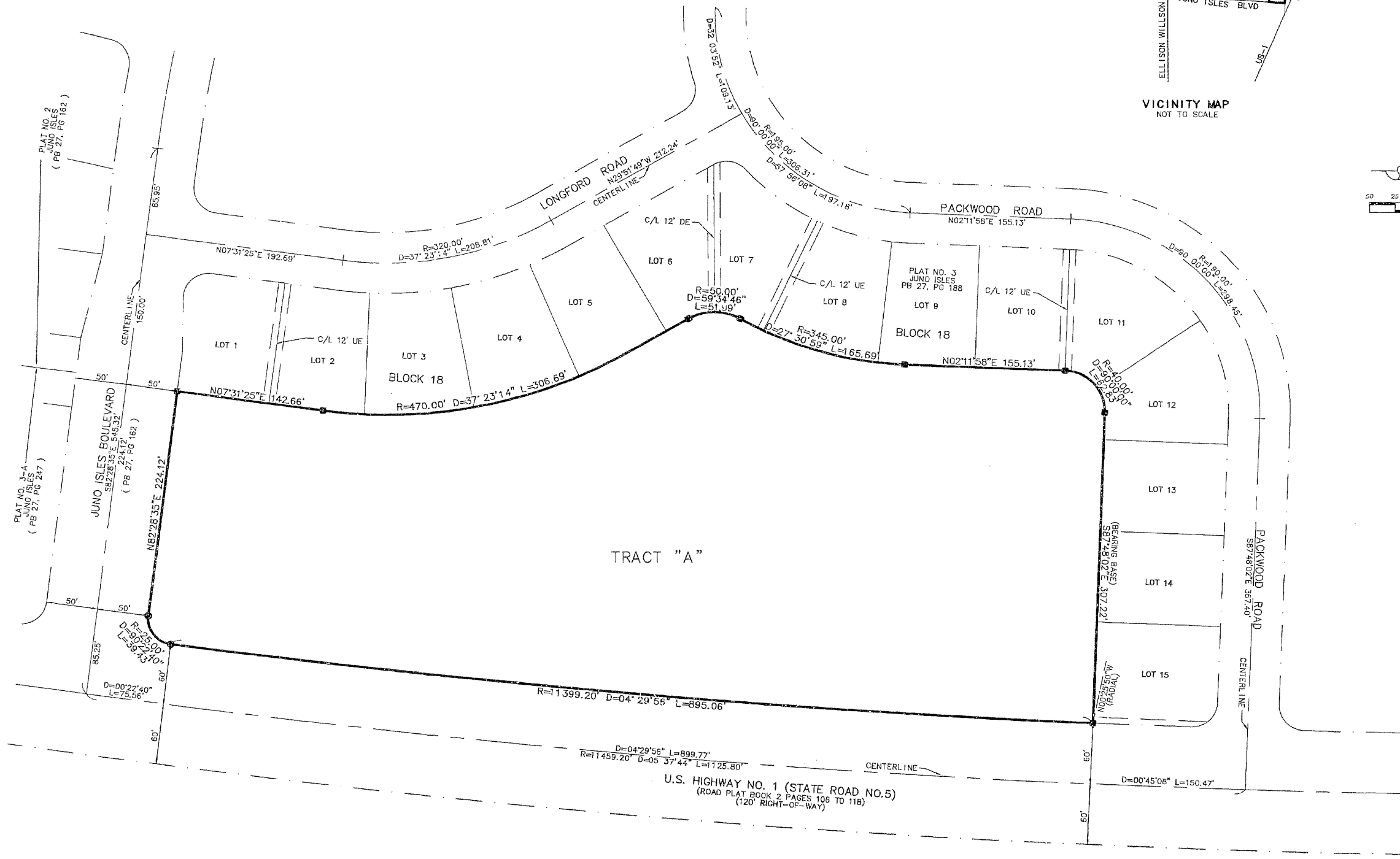
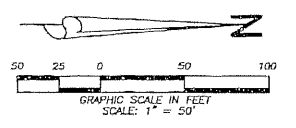
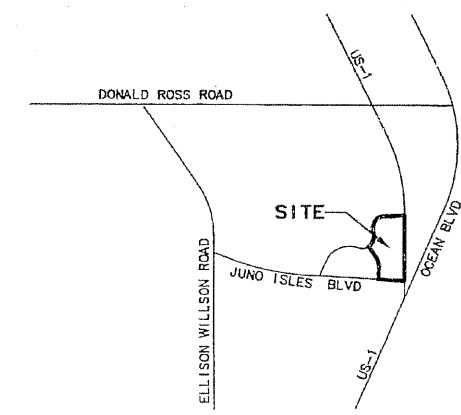


# VILLAS OF JUNO BEACH

LYING IN SECTION 33, TOWNSHIP 41 SOUTH, RANGE 43 EAST  
 TOWN OF JUNO BEACH  
 PALM BEACH COUNTY, FLORIDA  
 JUNE, 1999 SHEET 2 OF 2

162



<b>LIDBERG LAND SURVEYING, INC.</b>			
CAD	K:\AUTOCAD\OLEN\JNIS\0917-306.DWG		
REF	K:\AUTOCAD\OLEN\JNIS\JNISMG01.DWG		
FLD	FB, 295 PG. 10	JOB 07-081 (308)	
OFF	A. J. P.	DATE 01/26/99	
CKD	D. C. L.	SHEET 2 OF 2	DWG 0917-081

673 West Indian Ocean Road, Suite 200  
 Juno Beach, Florida 33408 TEL: 561-744-5454