

# SCHUMACHER AT WATER TOWER ROAD 164

SITUATE IN THE NORTHWEST ONE-QUARTER OF SECTION 20,  
TOWNSHIP 42 SOUTH, RANGE 43 EAST,  
TOWN OF LAKE PARK, PALM BEACH COUNTY, FLORIDA.  
SHEET 2 OF 2  
JULY, 1999

NORTHWEST CORNER OF SECTION 20  
TOWNSHIP 42 SOUTH, RANGE 43 EAST

STATE OF FLORIDA } SS  
COUNTY OF PALM BEACH }  
THIS PLAT WAS FILED FOR  
RECORD AT \_\_\_\_\_ DAY OF  
THIS \_\_\_\_\_ AD, 1999 AND  
DULY RECORDED IN PLAT BOOK  
\_\_\_\_\_ ON PAGES \_\_\_\_\_ AND  
\_\_\_\_\_  
DOROTHY H. WILKEN, CLERK  
CIRCUIT COURT  
BY: \_\_\_\_\_ DC

NOT PLATTED

N898298.009  
E955925.295

N898282.049  
E956527.113

- LEGEND:**
- ∠ - CENTRAL ANGLE/DELTA
  - CL - CENTER LINE
  - D.B. - DEED BOOK
  - D.E. - DRAINAGE EASEMENT
  - F.P.L. - FLORIDA POWER AND LIGHT COMPANY
  - A - ARC LENGTH
  - L.A.E. - LIMITED ACCESS EASEMENT
  - L.W.D. - LAKE WORTH DRAINAGE DISTRICT
  - N.R. - NON-RADIAL
  - N.T.S. - NOT TO SCALE
  - O.R.B. - OFFICIAL RECORDS BOOK
  - P.B. - PLAT BOOK
  - P.P. - PAGE
  - P.O.B. - POINT OF BEGINNING
  - P.O.C. - POINT OF COMMENCEMENT
  - R/W - RIGHT OF WAY
  - U.E. - UTILITY EASEMENT
  - W.C. - WITNESS CORNER
  - - PERMANENT CONTROL POINT (PCP)  
PCP LB4820
  - - PERMANENT REFERENCE MONUMENT (PRM)  
SET PRM LB4820

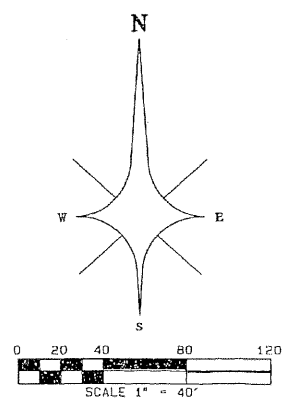
WEST LINE OF THE NW 1/4 OF SECTION 20, TOWNSHIP 42 SOUTH, RANGE 43 EAST  
S01°19'36"W 2700.69'

N01°19'36"E 450.00'

S01°19'36"W 450.00'

S88°28'51"E 602.00'

TRACT "A"  
= 6.22 ACRES



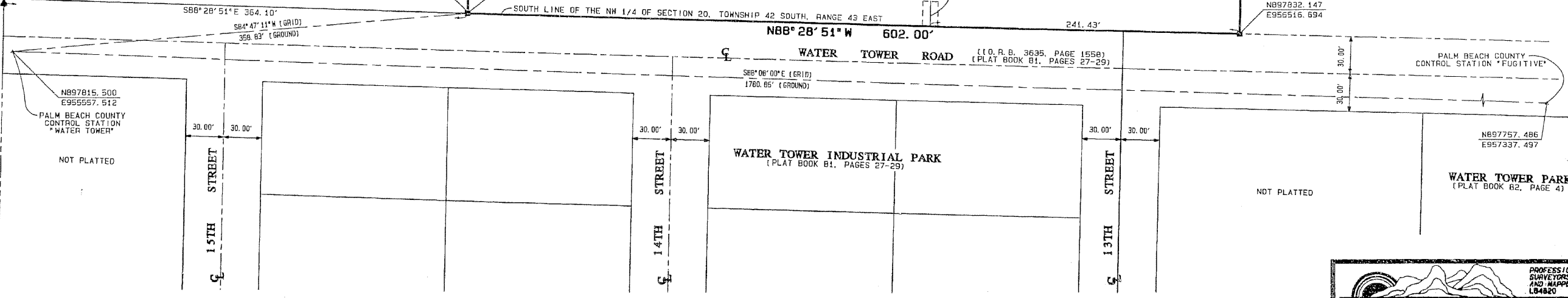
POINT OF COMMENCEMENT  
SOUTHWEST CORNER OF THE  
NORTHWEST QUARTER OF SECTION 20  
TOWNSHIP 42 SOUTH, RANGE 43 EAST

POINT OF BEGINNING

N897648.108  
E955914.875

12' U.E.  
S1°31'09"E 20.00'

N897832.147  
E956516.694



PROFESSIONAL SURVEYORS AND MAPPERS LB4820

**ATLANTIC - CARIBBEAN MAPPING, INC.**

3070 JDD ROAD - GREENACRES, FLORIDA 33437  
(951) 964-7884, FAX (951) 964-1060