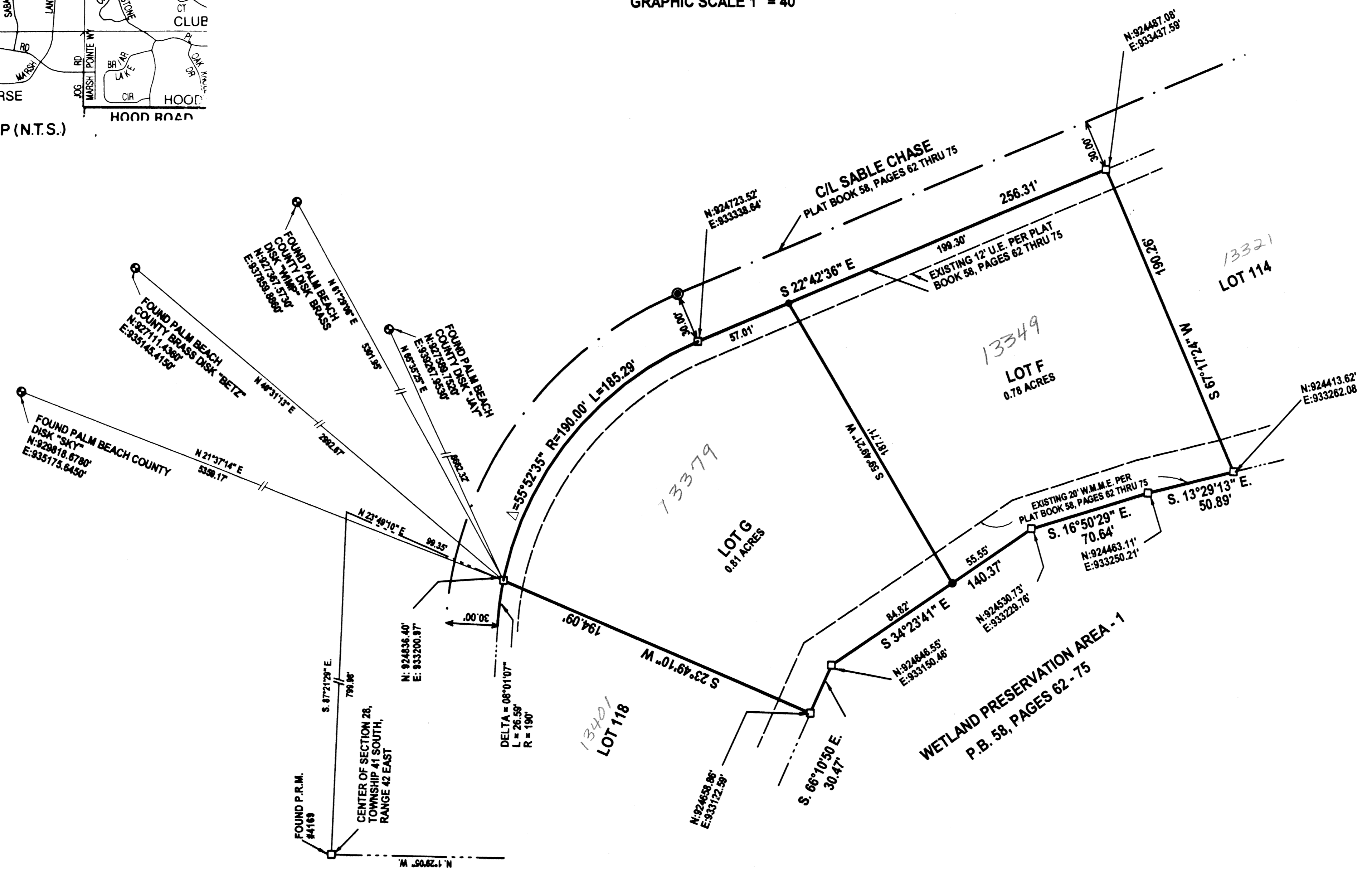
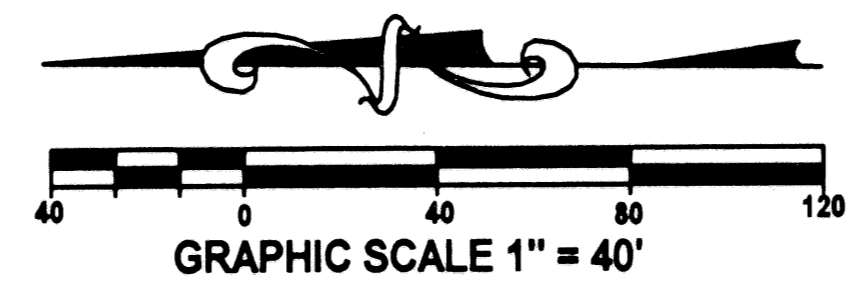
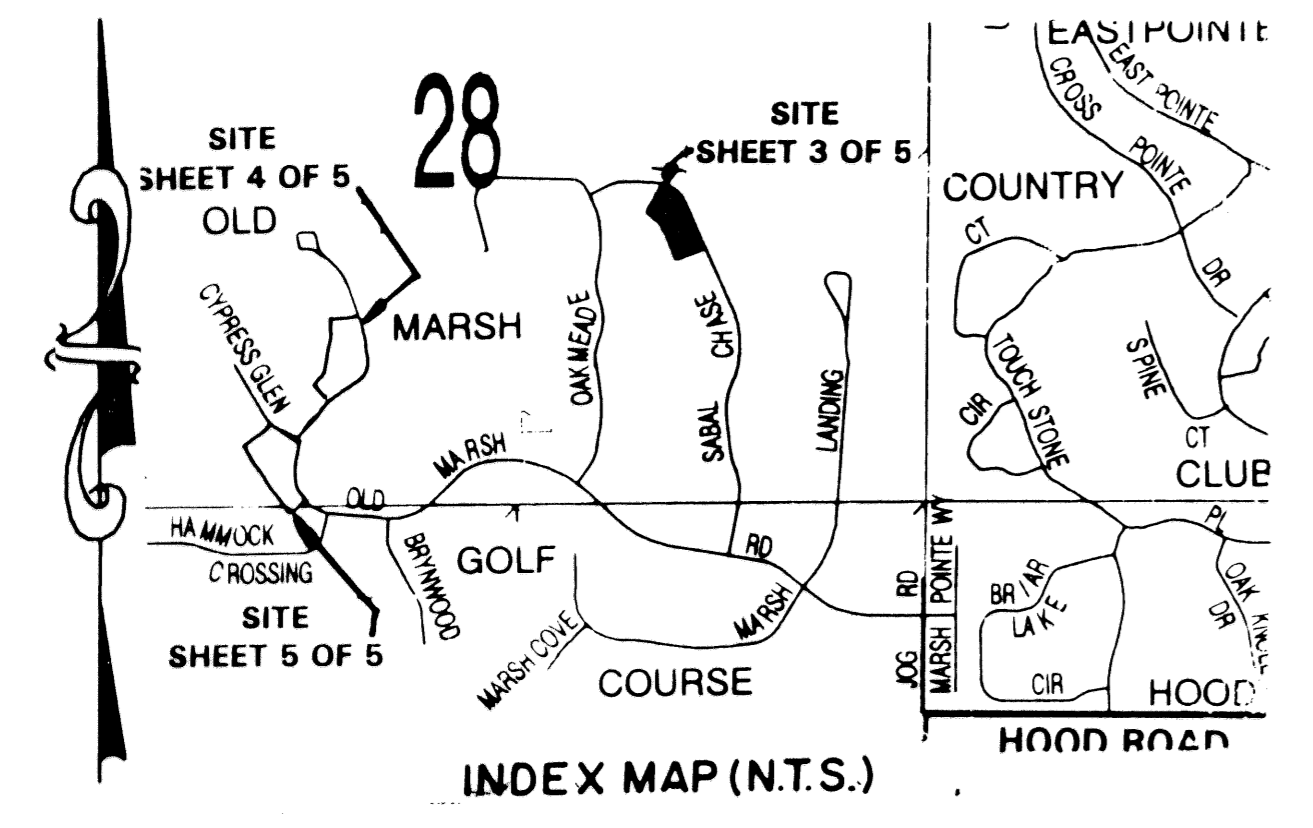


OLD MARSH GOLF CLUB MINOR REPLAT

BEING A REPLAT OF LOTS 115, 116, 117, 164, 165, 166, 167, 179, 180, 181 AND 182, PLAT OF OLD MARSH GOLF CLUB, A PLANNED UNIT DEVELOPMENT,
PLAT BOOK 58, PAGES 62 THROUGH 75, LYING IN SECTION 28, TOWNSHIP 41 SOUTH, RANGE 42 EAST, PALM BEACH COUNTY, FLORIDA.
NOVEMBER, 1998. SHEET 3 OF 5



State Plane Coordinate Information.
 A. Coordinates shown are grid
 B. Datum = NAD 83, 1990 Adjustment
 C. Zone = Florida East
 D. Linear unit = US Survey Foot
 E. Coordinate system 1983 State Plane Transverse Mercator Projection
 F. All distances are ground
 G. Scale Factor = 1.0000304070
 H. Ground distance x scale factor = grid distance

ABBREVIATIONS AND LEGEND

- C/L = CENTERLINE
- D.E. = DRAINAGE EASEMENT
- U.E. = UTILITY EASEMENT
- W.M.M.E. = WATER MANAGEMENT MAINTENANCE EASEMENT
- ⊙ = FOUND (P.C.P.) PERMANENT CONTROL POINT NO. 4169.
- = SET (P.R.M.) PERMANENT REFERENCE MONUMENT NO. 2608, UNLESS OTHERWISE INDICATED.
- = MONUMENT AT LOT CORNER (FOUND 5/8" IRON ROD WITH CAP NO. L.B. 4669)
- = MONUMENT AT LOT CORNER (FOUND 5/8" IRON ROD WITH CAP NO. L.S. 3336)
- Δ = DELTA
- R = RADIUS
- L = LENGTH OF ARC

NOTICE: There may be additional restrictions that are not recorded on this plat that may be found in the Public Records of this county.
 This instrument was prepared by DONALD D. DANIELS, 725 North A-1-A, Suite C-111, Jupiter, Florida 33477

SUBDIVISION Old Marsh Golf Club
 PAGE 193
 FLOOD ZONE B
 ZONING RE1SE
 QUAD # 42
 SE 85-4a
 TAZ
 PUD NAME Old Marsh Golf Club

DONALD D. DANIELS, INC. Consulting Surveyors & Mappers	OLD MARSH GOLF CLUB MINOR REPLAT REPLAT OF LOTS 115, 116 AND 117		SCALE: 1" = 40'
	Florida Certificate LB No. 4165 725 North A-1-A, Suite C-111 Jupiter, Florida 33477 TEL: (561) 747-9894	REF. 284142 OFFICE: DEB DATE: NOV., 1998.	Field Date: Revisions: