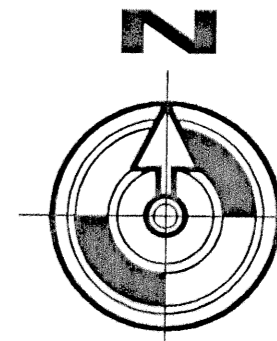


This Instrument Prepared by
HAGER WEINBERG AND ASSOCIATES, INC.
 Thomas R. Palibocke of
 Professional Land Surveyors
 Certificate of Authorization No. 6772
 3850 N.W. Boca Raton Blvd. Boca Raton, Florida 33431
 Phone: (561) 395-3600 Fax: (561) 395-2237 E-Mail: hwa@aol.com

MELROSE P.U.D. (VENETIAN ISLES) POD G

A Planned Unit Development

Lying in Section 17, Township 45 South, Range 42 East, being a Replat of a portion of Tracts "U" and "L-1" of MELROSE P.U.D., as Recorded in Plat Book 85 at Pages 9 through 13, of the Public Records of Palm Beach County, Florida.
 Palm Beach County, Florida



SCALE: 1" = 40'

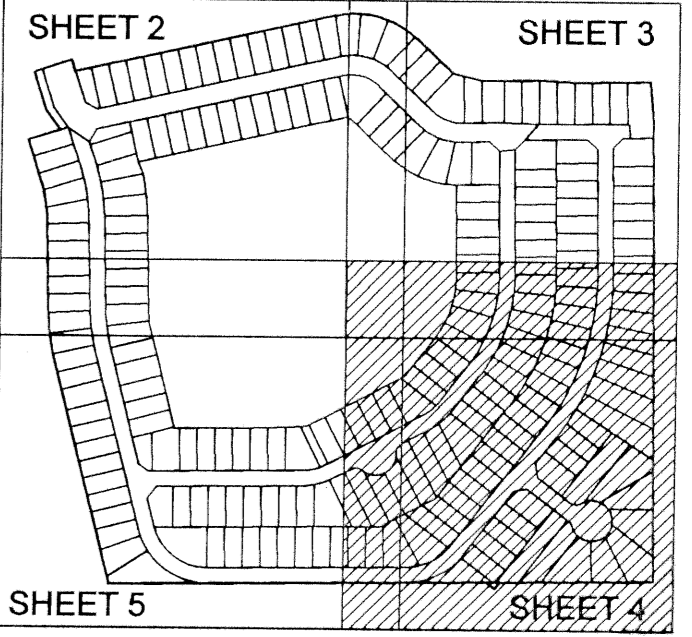
State of Florida ss
 County of Palm Beach
 This Plat was Filed for Record
 at this day
 of 1999.
 and Duly Recorded in Plat Book
 on Page
 through Page
 Dorothy H. Wilken, Clerk
 By: D.C.

Sheet 4 of 5 Sheets

- PLAT LEGEND:**
- P.R.M. (M) Denotes Set Permanent Reference Monument (P.R.M.) P.L.S. No. 5061. Unless otherwise shown
 - C Denotes Centerline
 - A Denotes Arc length
 - R Denotes Radius
 - D Denotes Delta (central angle)
 - C1 Denotes Curve (refer to Curve Table)
 - P.O.B. Denotes Point of Beginning
 - P.O.C. Denotes Point of Commencement
 - P.B.C.R. Denotes Palm Beach County Records
 - O.R.B. Denotes Official Records Book
 - P.B. Denotes Plat Book
 - P.C.P. Denotes Permanent Control Point
 - N.R. Denotes Non-Radial
 - O.E. Denotes Overhang Easement
 - R.W. Denotes Right-of-Way
 - SEC. Denotes Section
 - S.F. Denotes Square Feet
 - D.E. Denotes Drainage Easement
 - U.E. Denotes Utility Easement
 - L.A.E. Denotes Limited Access Easement

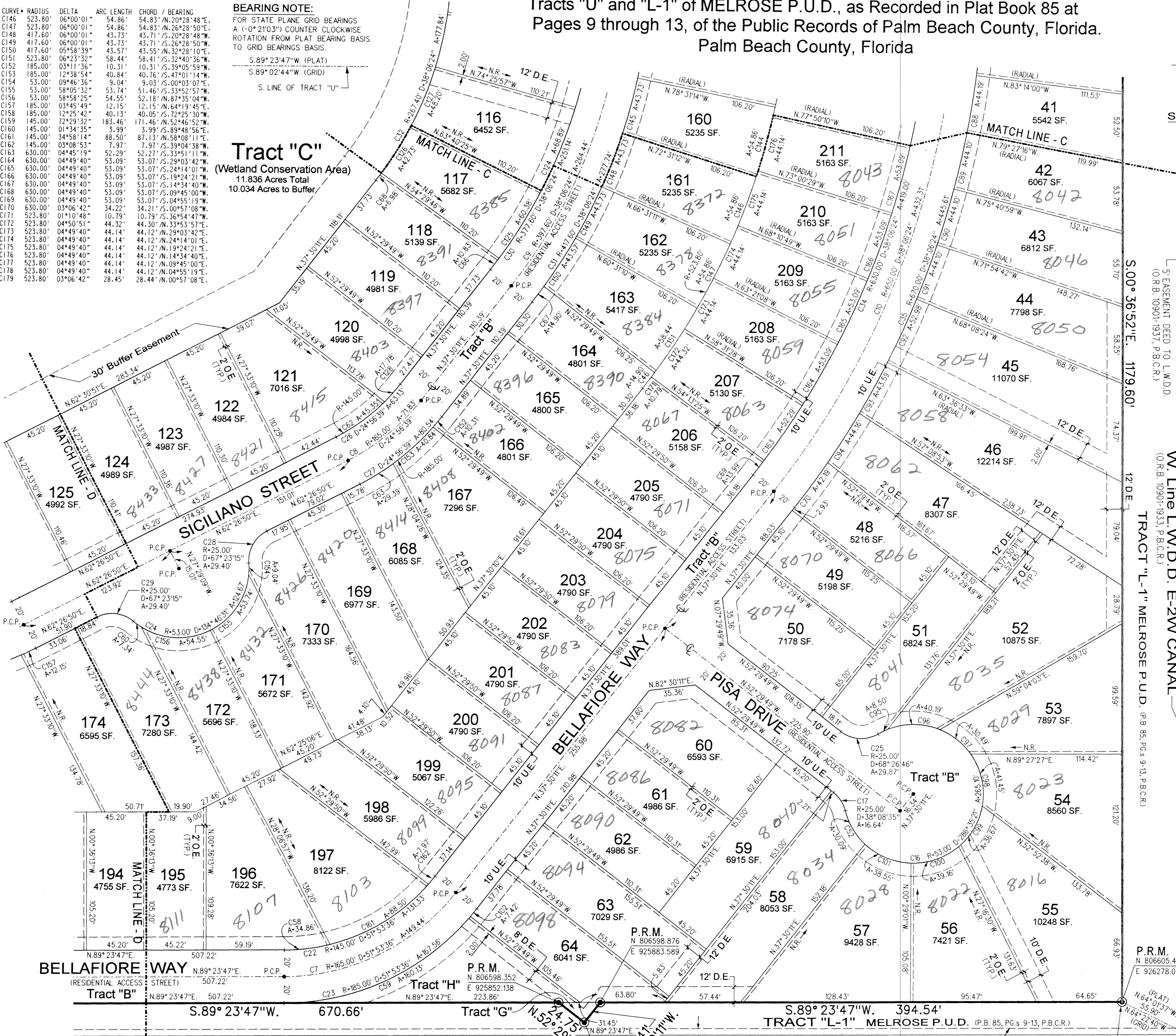
SURVEYOR'S NOTES:

1. NOTICE: This Plat as recorded in its graphic form, is the Official depiction of the subdivided lands described herein and will in no circumstances be supplanted in authority by any other graphic or digital form of the plat.
2. Bearings shown hereon are based upon an assumed meridian along the South Line Tract "U" of the Plat of "MELROSE P.U.D.", recorded in Plat Book 85, Pages 9 through 13, of the Public Records of Palm Beach County, Florida, having a bearing of South 89° 23'47" West.
3. Coordinates shown hereon are based upon the STATE PLANE COORDINATE SYSTEM TRANSVERSE MERCATOR - FLORIDA EAST ZONE, 1983 projection, with the NAD 1990 adjustment.
4. State Plane Bearings when shown are Grid Bearing. Distances shown are Ground Distance. The Scale Factor used is 1.0000232.
5. No Buildings or any kind of construction or trees or shrubs shall be placed on any Easement without prior written approval of all Easement beneficiaries and all applicable County approvals as required for such Encroachments.
6. In those cases where Easements of different types cross or overlap, Drainage Easements shall have First Priority, Utility Easements shall have Second Priority, Access Easements shall have Third Priority and all other Easements shall subordinate to these with their Priorities determined by the use of rights granted.
7. The Building Setbacks and Site Regulations shall comply with the Approved Master Plan and Current Palm Beach County Zoning Regulations.



CURVE TABLE:

CURVE#	RADIUS	DELTA	ARC LENGTH	CHORD / BEARING
C1	626.20'	12°57'54"	141.70'	141.40' / N.07°51'24"W
C2	230.00'	56°20'12"	226.15'	217.15' / S.74°25'36"E
C3	373.80'	16°24'11"	107.01'	106.65' / N.09°34'32"W
C4	500.00'	12°57'54"	113.14'	112.90' / N.07°51'24"W
C5	165.00'	76°15'53"	21.63'	203.17' / S.52°28'10"E
C6	165.00'	26°56'57"	77.61'	76.89' / N.75°55'19"E
C7	165.00'	51°53'36"	149.44'	144.39' / N.63°26'59"E
C8	165.00'	24°56'39"	71.83'	71.27' / N.49°58'31"E
C9	391.60'	38°06'24"	264.44'	259.59' / N.18°26'59"E
C10	650.00'	38°06'24"	332.31'	424.38' / N.18°26'59"E
C11	125.00'	56°20'12"	122.91'	118.02' / S.74°25'36"E
C12	125.00'	44°20'43"	96.75'	94.35' / S.68°25'51"E
C13	214.00'	16°24'11"	61.27'	61.06' / N.09°34'32"W
C14	480.00'	12°57'54"	108.62'	108.38' / N.07°51'24"W
C15	520.00'	12°57'54"	117.67'	117.42' / N.07°51'24"W
C16	53.00'	286°35'21"	265.10'	63.36' / N.22°21'05"E
C17	25.00'	38°08'35"	16.64'	16.34' / N.33°25'32"E
C18	45.00'	76°15'53"	193.00'	179.07' / S.52°28'10"E
C19	185.00'	76°15'53"	246.25'	228.47' / S.52°28'10"E
C20	145.00'	26°56'57"	68.20'	67.57' / N.75°55'19"E
C21	185.00'	26°56'57"	87.01'	86.22' / N.75°55'19"E
C22	145.00'	51°53'36"	131.33'	126.88' / N.63°26'59"E
C23	185.00'	51°53'36"	167.56'	161.89' / N.63°26'59"E
C24	53.00'	134°44'31"	124.67'	91.78' / N.63°26'59"E
C25	25.00'	68°26'46"	29.87'	28.12' / S.86°43'12"E
C26	145.00'	24°56'39"	63.13'	62.63' / N.49°58'31"E
C27	185.00'	24°56'39"	80.54'	79.91' / N.49°58'31"E
C28	25.00'	67°23'15"	29.40'	27.14' / S.74°25'36"E
C29	25.00'	67°23'15"	29.40'	27.14' / S.74°25'36"E
C30	377.60'	38°06'24"	251.14'	246.53' / N.18°26'59"E
C31	417.60'	38°06'24"	277.74'	272.65' / N.18°26'59"E
C32	267.40'	38°06'24"	177.84'	174.58' / N.18°26'59"E
C33	237.40'	38°06'24"	157.89'	155.00' / N.18°26'59"E
C34	630.00'	38°06'24"	418.80'	411.32' / N.18°26'59"E
C35	670.00'	38°06'24"	445.61'	437.44' / N.18°26'59"E
C36	100.00'	44°20'43"	77.40'	75.48' / S.68°25'51"E
C37	150.00'	56°20'12"	147.49'	141.62' / S.74°25'36"E
C38	100.00'	56°20'12"	98.33'	94.31' / S.74°25'36"E
C39	150.00'	44°20'43"	116.10'	113.22' / S.68°25'51"E
C40	260.20'	35°48'27"	162.61'	159.98' / S.64°09'43"E
C41	290.20'	36°24'17"	184.39'	181.30' / S.64°27'38"E
C42	234.00'	16°24'11"	66.99'	66.76' / N.09°34'32"W
C43	194.00'	16°24'11"	55.34'	55.35' / N.09°34'32"W
C44	630.00'	10°30'07"	115.51'	115.35' / N.09°37'30"W
C45	660.20'	10°42'34"	123.40'	123.22' / N.06°43'44"W
C46	523.80'	01°37'49"	14.90'	14.90' / N.36°41'17"E
C47	626.20'	01°58'21"	21.56'	21.56' / N.32°11'10"W
C48	430.00'	01°58'21"	62.48'	62.48' / N.36°41'17"E
C49	373.80'	05°04'24"	33.10'	33.09' / N.02°54'33"E
C50	480.00'	00°21'34"	3.01'	3.01' / N.14°09'33"W
C51	520.00'	01°58'21"	17.90'	17.90' / S.13°21'10"E
C52	53.00'	32°31'52"	30.09'	29.69' / N.30°37'10"W
C53	25.00'	38°08'35"	16.64'	16.34' / N.33°25'32"E
C54	145.00'	01°11'45"	5.56'	5.56' / N.15°26'12"E
C55	185.00'	05°49'18"	18.80'	18.79' / N.17°15'00"W
C56	145.00'	20°48'25"	52.66'	52.37' / N.78°59'34"E
C57	185.00'	10°45'26"	34.73'	34.68' / S.84°01'04"W
C58	185.00'	13°46'29"	34.86'	34.86' / S.84°01'04"W
C59	185.00'	49°35'41"	160.13'	155.18' / N.84°35'57"E
C60	53.00'	07°55'57"	7.34'	7.33' / N.54°07'53"W
C61	25.00'	68°26'46"	29.87'	28.12' / N.86°43'12"E
C62	145.00'	17°55'11"	45.35'	45.17' / N.53°29'15"E
C63	185.00'	09°16'20"	29.39'	29.39' / N.02°54'33"E
C64	25.00'	67°23'15"	29.40'	27.14' / S.74°25'36"E
C65	25.00'	67°23'15"	29.40'	27.14' / S.74°25'36"E
C66	377.60'	01°38'34"	10.83'	10.83' / N.36°40'54"E
C67	417.60'	02°02'42"	14.90'	14.90' / S.36°28'50"W
C68	185.00'	09°16'20"	29.39'	29.39' / N.02°54'33"E
C69	630.00'	01°16'20"	13.99'	13.98' / S.36°52'12"E
C70	670.00'	03°36'30"	42.19'	42.19' / S.35°41'56"W
C71	100.00'	44°20'43"	77.40'	75.48' / S.68°25'51"E
C72	150.00'	01°37'48"	4.27'	4.27' / N.78°13'11"E
C73	150.00'	01°37'48"	98.33'	94.31' / S.74°25'36"E
C74	150.00'	06°51'33"	17.96'	17.95' / N.49°41'16"W
C75	260.20'	03°56'52"	17.93'	17.92' / S.48°13'56"E
C76	194.00'	12°13'26"	41.39'	41.31' / S.11°39'55"E
C77	630.00'	00°40'14"	7.37'	7.37' / N.01°42'33"W
C78	234.00'	17°55'11"	42.45'	42.31' / S.74°25'36"E
C79	230.00'	18°25'27"	73.96'	73.64' / N.77°49'10"W
C80	150.00'	15°23'09"	40.28'	40.16' / S.77°03'21"E
C81	150.00'	14°59'47"	39.26'	39.15' / N.61°51'53"W
C82	150.00'	08°06'29"	21.23'	21.21' / N.50°18'45"W
C83	150.00'	08°06'29"	11.68'	11.68' / S.09°12'56"E
C84	230.00'	20°26'24"	82.05'	81.62' / S.58°23'14"E
C85	670.00'	03°46'17"	41.90'	41.89' / S.01°11'16"W
C86	670.00'	03°46'17"	44.29'	44.28' / N.04°52'23"E
C87	670.00'	03°46'17"	44.19'	44.18' / S.08°39'22"W
C88	670.00'	03°46'17"	44.10'	44.09' / S.08°39'22"W
C89	670.00'	03°46'17"	44.10'	44.09' / S.16°12'10"W
C90	670.00'	03°46'17"	44.10'	44.09' / S.19°58'27"W
C91	670.00'	04°31'51"	52.98'	52.97' / N.24°07'31"E
C92	670.00'	04°31'51"	45.59'	45.58' / N.28°15'16"E
C93	670.00'	04°31'51"	44.59'	44.58' / N.28°15'16"E
C94	670.00'	04°31'51"	44.59'	44.58' / N.28°15'16"E
C95	53.00'	09°11'16"	8.50'	8.49' / S.63°39'03"W
C96	53.00'	43°27'07"	40.19'	39.24' / N.89°58'14"E
C97	53.00'	32°57'25"	30.49'	30.07' / N.51°49'30"W
C98	53.00'	44°48'42"	41.45'	41.45' / N.09°34'32"W
C99	53.00'	39°38'27"	36.67'	35.94' / S.28°11'08"E
C100	53.00'	42°20'09"	39.16'	38.28' / S.70°16'26"W
C101	53.00'	41°40'23"	38.55'	37.70' / N.67°43'18"W
C102	185.00'	02°17'55"	7.42'	7.42' / S.38°39'09"W
C103	185.00'	70°26'34"	22.45'	21.32' / S.81°46'55"E
C104	626.20'	04°51'11"	53.04'	53.02' / S.09°56'25"W
C105	626.20'	04°51'11"	44.04'	44.03' / N.09°56'25"W
C106	520.00'	04°51'11"	44.04'	44.03' / N.09°56'25"W
C107	520.00'	04°51'11"	44.04'	44.03' / N.09°56'25"W
C108	626.20'	04°51'11"	53.04'	53.02' / S.09°56'25"W
C109	520.00'	01°17'12"	11.68'	11.68' / S.02°01'46"E
C110	626.20'	01°17'12"	14.06'	14.06' / N.02°01'03"E
C111	194.00'	04°10'45"	14.15'	14.15' / S.03°27'49"E
C112	194.00'	04°10'45"	14.15'	14.15' / S.03°27'49"E
C113	373.80'	06°45'25"	44.08'	44.06' / N.09°49'33"W
C114	373.80'	04°34'22"	29.83'	29.82' / N.15°29'27"W
C115	150.00'	15°55'06"	41.67'	41.54' / S.61°04'36"E
C116	260.20'	15°55'06"	72.37'	72.13' / N.58°10'25"W
C117	260.20'	15°55'06"	72.37'	72.09' / S.74°06'13"E
C118	150.00'	15°55'28"	41.69'	41.56' / N.76°59'53"E
C119	150.00'	05°35'36"	14.77'	14.77' / S.87°46'55"E
C120	267.40'	07°56'50"	37.09'	37.06' / S.03°22'56"E
C121	377.60'	07°40'25"	50.57'	50.53' / N.03°13'59"E
C122	377.60'	09°10'28"	60.46'	60.40' / S.11°39'26"W
C123	267.40'	09°10'47"	42.84'	42.80' / N.11°56'01"E
C124	377.60'	09°10'47"	68.93'	68.80' / N.21°18'16"E
C125	377.60'	09°10'47"	60.38'	60.32' / S.11°18'45"W
C126	267.40'	09°09'21"	42.73'	42.69' / N.31°25'45"E
C127	267.40'	10°19'41"	48.20'	48.14' / S.21°41'14"W
C128	145.00'	07°01'28"	17.78'	17.77' / S.41°00'55"W
C129	145.00'	06°08'32"	15.54'	15.54' / N.64°31'06"E
C130	480.00'	06°47'38"	56.92'	56.88' / N.10°34'57"E
C131	480.00'	05°48'41"	48.69'	48.66' / N.04°16'47"W
C132	234.00'	03°21'37"	13.72'	13.72' / N.03°03'15"W
C133	630.00'	04°58'43"	54.76'	54.74' / S.04°32'02"E
C134	630.00'	04°58'43"	53.38'	53.36' / S.09°26'58"E
C135	234.00'	10°50'12"	44.19'	44.19' / N.10°09'10"W
C136	234.00'	02°12'22"	9.01'	9.01' / N.16°40'27"W
C137	417.60'	00°01'29"	0.18'	0.18' / S.00°35'29"E
C138	523.80'	06°03'47"	55.43'	55.40' / N.02°26'51"E
C139	417.60'	06°03'47"	44.15'	44.13' / S.02°27'00"W
C140	523.80'	00°01'11"	0.18'	0.18' / S.00°35'29"E
C141	523.80'	06°00'01"	54.86'	54.83' / N.08°28'45"E
C142	417.60'	06°00'01"	43.73'	43.71' / S.08°28'45"E
C143	523.80'	06°00'01"	54.86'	54.83' / N.14°28'47"E
C144	417.60'	06°00'01"	43.73'	43.71' / S.14°28'47"E



Melrose P.U.D. - Pod G
 PLAT PAGE 35
 FLOOD MAP#
 ZONING RT
 TAX 80353
 ZIP CODE 33497
 PUD NAME Venetian Isles

30' R/W per PALM BEACH FARMS COMPANY PLAT No. 3 (P.B. 2, Pg. 5-54, P.B.C.R.)
 P.R.M. N 806583.404 E 925871.865
 P.R.M. N 806598.876 E 925883.589
 P.R.M. N 806582.138 E 925883.589
 P.R.M. N 806605.449 E 926278.081
 P.O.B. S.E. CORNER TRACT "U" (P.B. 85, Pg. 9-13, P.B.C.R.)
 P.R.M. N 806581.274 E 926328.487 (P.B. 85, Pg. 9-13, P.B.C.R.)
 N. Line L.W.D.D. L-21 CANAL (O.R.B. 1585-505, P.B.C.R.)
 5' EASEMENT DEED TO L.W.D.D. (O.R.B. 10901-1937, P.B.C.R.)
 S.89° 23'47" W. 394.54'
 S.89° 23'47" W. 670.66'
 S.89° 23'47" W. 670.66'
 S.89° 23'47" W. 394.54'