

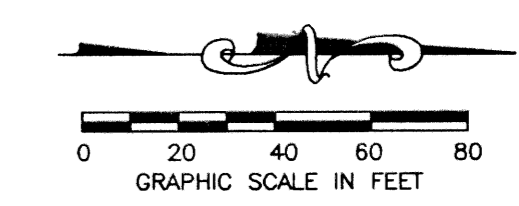
0587-029

45

STATE OF FLORIDA
 COUNTY OF PALM BEACH

THIS PLAT WAS FILED FOR RECORD _____ DAY OF _____ AD, 1999 AND DULY RECORDED IN PLAT BOOK _____ ON PAGES _____ AND _____.

DOROTHY H. WILKEN, CLERK
 BY: _____, D.C.

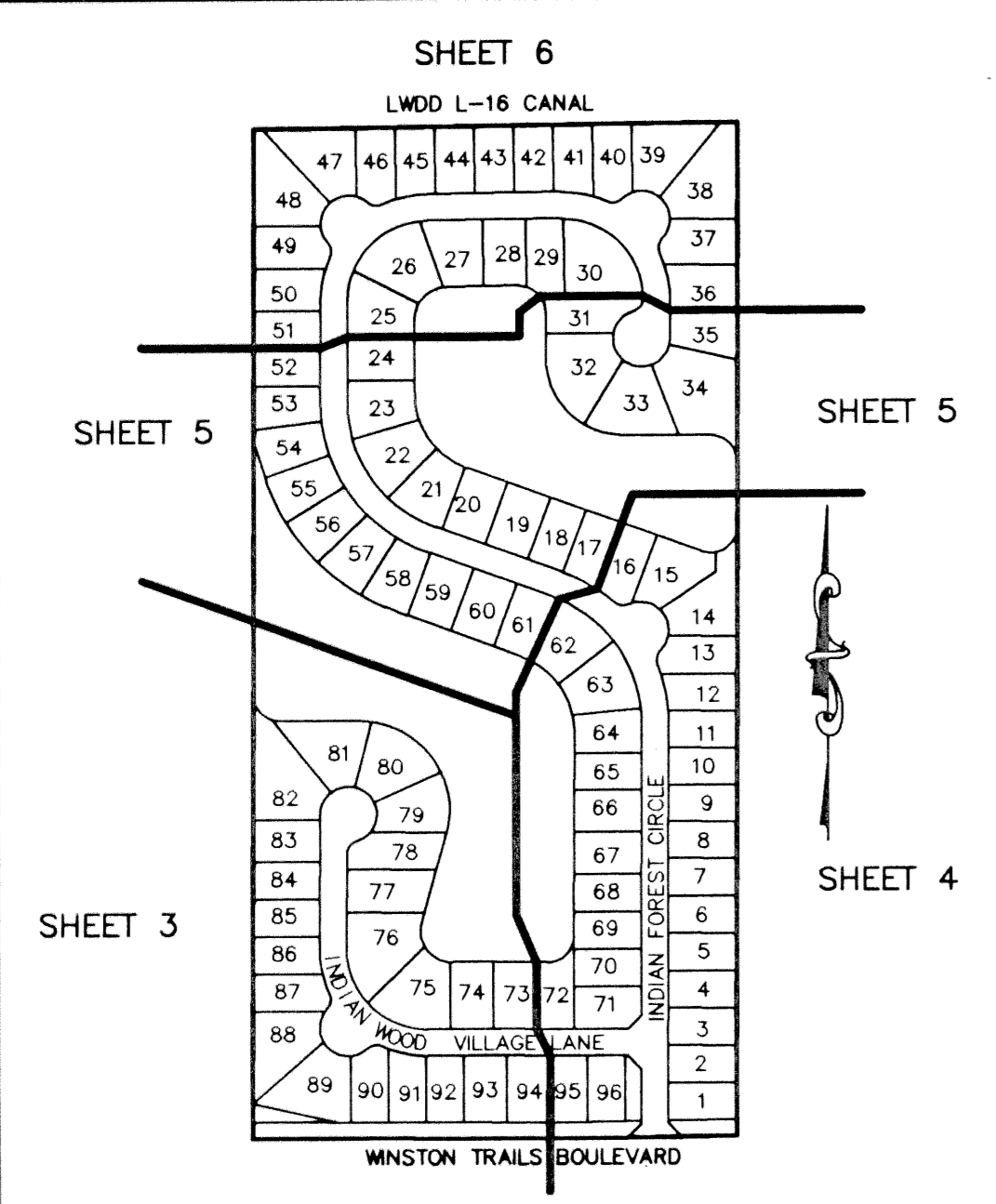


WINSTON TRAILS PARCEL EIGHTEEN

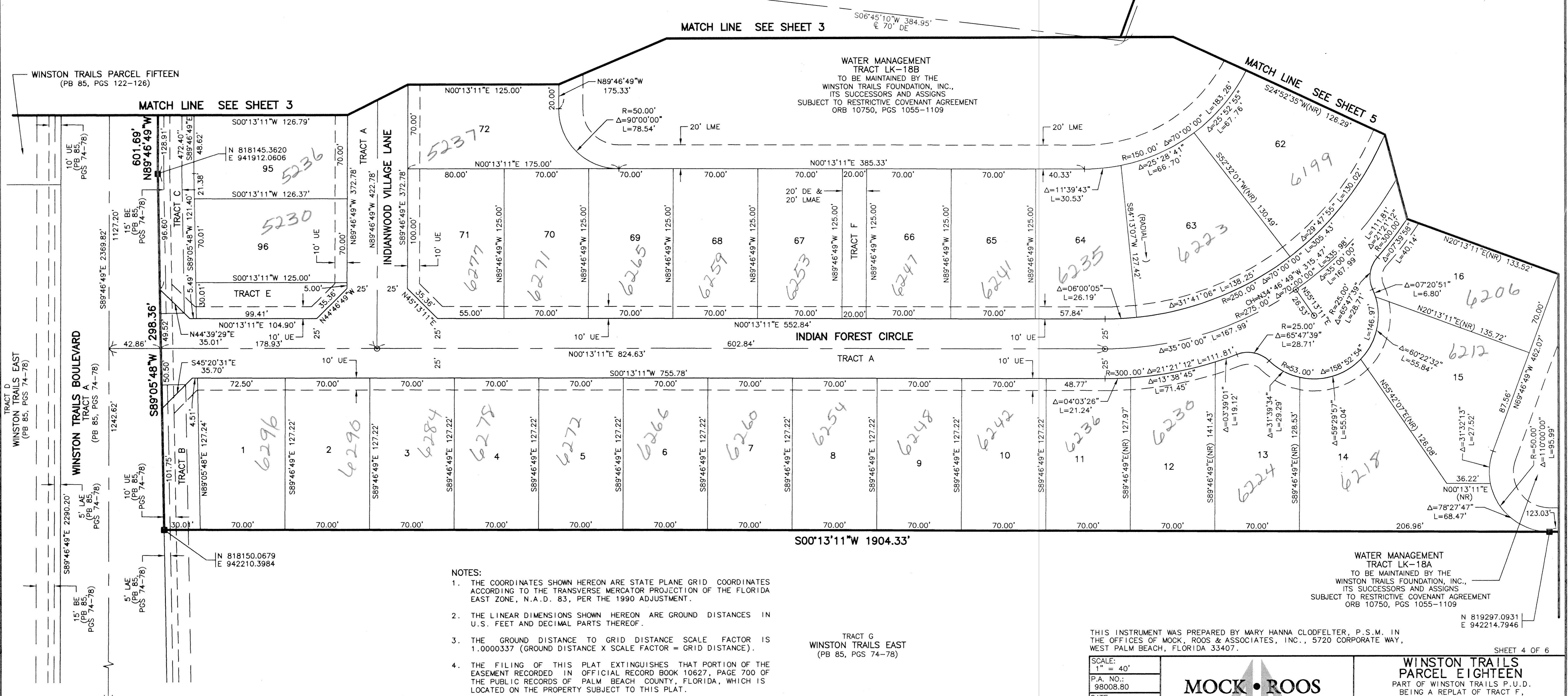
PART OF WINSTON TRAILS P.U.D.
 BEING A REPLAT OF TRACT F,
 "WINSTON TRAILS EAST"
 (PB 85, PGS 74-78)

SITUATE IN SECTION 2, TOWNSHIP 45 SOUTH, RANGE 42 EAST
 PALM BEACH COUNTY, FLORIDA
 DECEMBER, 1998 SHEET 4 OF 6

- LEGEND**
- L ARC LENGTH
 - AE ACCESS EASEMENT
 - BE BUFFER EASEMENT
 - Δ CENTRAL (DELTA) ANGLE
 - CH CHORD
 - DE DRAINAGE EASEMENT
 - FPL FLORIDA POWER & LIGHT
 - LAE LIMITED ACCESS EASEMENT
 - LME LAKE MAINTENANCE EASEMENT
 - LMAE LAKE MAINTENANCE ACCESS EASEMENT
 - LWDD LAKE WORTH DRAINAGE DISTRICT
 - PUD PLANNED UNIT OF DEVELOPMENT
 - (NR) NON-RADIAL
 - ORB OFFICIAL RECORD BOOK
 - PB PLAT BOOK
 - PG(S) PAGE(S)
 - R RADIUS
 - (TYP) TYPICAL
 - UE UTILITY EASEMENT
 - PERMANENT REFERENCE MONUMENT FOUND LB #048
 - PERMANENT REFERENCE MONUMENT SET LB #048
 - PERMANENT CONTROL POINT SET LB #048
 - ⊕ CENTERLINE



SHEET LOCATION MAP
 (NOT TO SCALE)



- NOTES:**
- THE COORDINATES SHOWN HEREON ARE STATE PLANE GRID COORDINATES ACCORDING TO THE TRANSVERSE MERCATOR PROJECTION OF THE FLORIDA EAST ZONE, N.A.D. 83, PER THE 1990 ADJUSTMENT.
 - THE LINEAR DIMENSIONS SHOWN HEREON ARE GROUND DISTANCES IN U.S. FEET AND DECIMAL PARTS THEREOF.
 - THE GROUND DISTANCE TO GRID DISTANCE SCALE FACTOR IS 1.0000337 (GROUND DISTANCE X SCALE FACTOR = GRID DISTANCE).
 - THE FILING OF THIS PLAT EXTINGUISHES THAT PORTION OF THE EASEMENT RECORDED IN OFFICIAL RECORD BOOK 10627, PAGE 700 OF THE PUBLIC RECORDS OF PALM BEACH COUNTY, FLORIDA, WHICH IS LOCATED ON THE PROPERTY SUBJECT TO THIS PLAT.

THIS INSTRUMENT WAS PREPARED BY MARY HANNA CLODFELTER, P.S.M. IN THE OFFICES OF MOCK, ROOS & ASSOCIATES, INC., 5720 CORPORATE WAY, WEST PALM BEACH, FLORIDA 33407.

MOCK • ROOS
 ENGINEERS • SURVEYORS • PLANNERS

5720 Corporate Way, West Palm Beach, Florida 33407
 (561) 663-3113, fax 478-7248

**WINSTON TRAILS
 PARCEL EIGHTEEN**
 PART OF WINSTON TRAILS P.U.D.
 BEING A REPLAT OF TRACT F,
 "WINSTON TRAILS EAST"
 (PB 85, PGS 74-78)

SECTION 2, TOWNSHIP 45 SOUTH, RANGE 42 EAST
 PALM BEACH COUNTY, FLORIDA

Winston Trails Parcel 18
 PAGE 45
 FLOOD MAP # 175B
 FLOOD ZONE B
 PARCELS 34
 ZONING RS15E
 REL 87-113
 TAZ 436
 PUD NAME Winston Trails

REV.: 09-02-99
 CAD FILE:
 MUSSWTEP/WTEPRP07