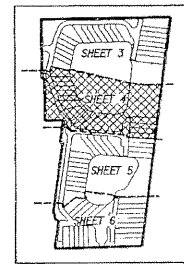
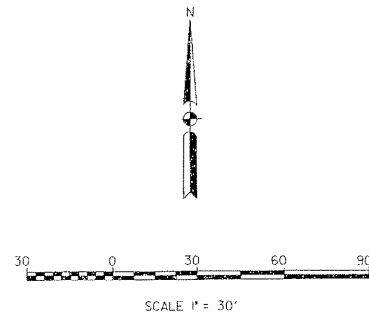


"ESTUARY"

A PLAT OF A PORTION OF SECTION 9, TOWNSHIP 46 SOUTH, RANGE 43 EAST
 ALSO BEING A REPLAT OF A PORTION OF "PLAT NO. 3 ROYAL PALM GARDENS", (P.B. 21, PG. 57, P.B.C.R.),
 A REPLAT OF A PORTION OF "HARRY SEEMILLER SUBDIVISION", (P.B. 9, PG. 72, P.B.C.R.),
 AND REPLAT OF A PORTION OF "LA-HACIENDA", (P.B. 15, PG. 6, P.B.C.R.)
 CITY OF DELRAY BEACH, PALM BEACH COUNTY, FLORIDA



SHEET INDEX
(NOT TO SCALE)

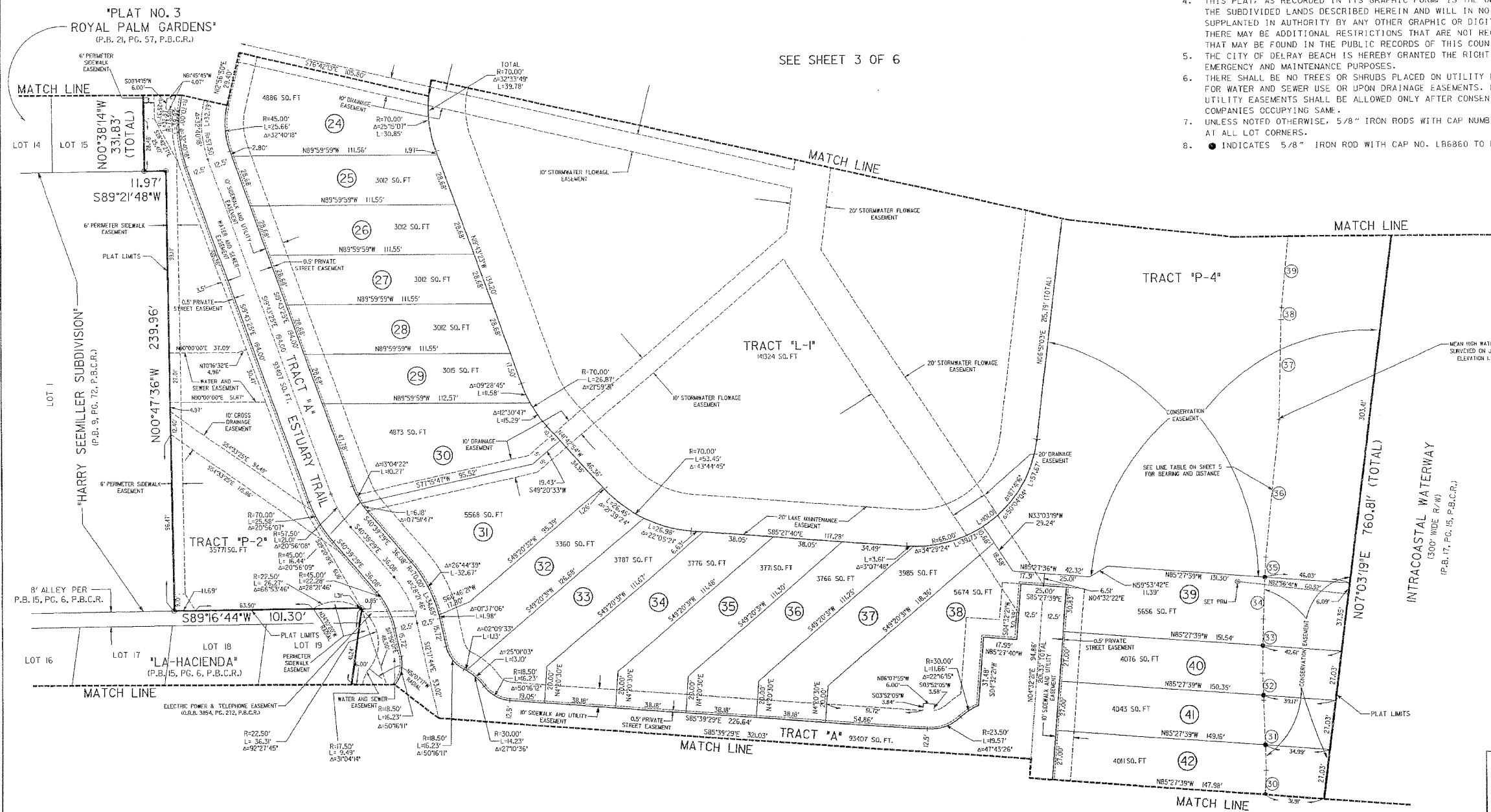


COUNTY OF PALM BEACH }
STATE OF FLORIDA }

THIS PLAT WAS FILED FOR RECORD AT _____
THIS _____ DAY OF _____
1999, AND DULY RECORDED IN PLAT BOOK NO. _____
AT PAGE(S) _____

SURVEY NOTES

1. © INDICATES SET PERMANENT REFERENCE MONUMENT (4"x4" CONCRETE MONUMENT WITH BRASS DISK NO. LB6860 (UNLESS NOTED OTHERWISE)).
2. BEARINGS SHOWN HEREON ARE RELATIVE TO AN ASSUMED DATUM. REFERENCE BEARING OF SOUTH 89°22'54" WEST ALONG THE NORTH LINE OF SECTION 9-46-43.
3. SURVEY DATA IN FIELD BOOK 106.
4. THIS PLAT, AS RECORDED IN ITS GRAPHIC FORM, IS THE OFFICIAL DEPICTION OF THE SUBDIVIDED LANDS DESCRIBED HEREIN AND WILL IN NO CIRCUMSTANCES BE SUPPLANTED IN AUTHORITY BY ANY OTHER GRAPHIC OR DIGITAL FORM OF THE PLAT. THERE MAY BE ADDITIONAL RESTRICTIONS THAT ARE NOT RECORDED ON THIS PLAT THAT MAY BE FOUND IN THE PUBLIC RECORDS OF THIS COUNTY.
5. THE CITY OF DELRAY BEACH IS HEREBY GRANTED THE RIGHT OF ACCESS FOR EMERGENCY AND MAINTENANCE PURPOSES.
6. THERE SHALL BE NO TREES OR SHRUBS PLACED ON UTILITY EASEMENTS WHICH ARE PROVIDED FOR WATER AND SEWER USE OR UPON DRAINAGE EASEMENTS. LANDSCAPING ON OTHER UTILITY EASEMENTS SHALL BE ALLOWED ONLY AFTER CONSENT OF ALL THE UTILITY COMPANIES OCCUPYING SAME.
7. UNLESS NOTED OTHERWISE, 5/8" IRON RODS WITH CAP NUMBER LB6860 SHALL BE PLACED AT ALL LOT CORNERS.
8. ● INDICATES 5/8" IRON ROD WITH CAP NO. LB6860 TO BE SET ON AN OFFSET TO LOT CORNER.



SEE SHEET 3 OF 6

SEE SHEET 5 OF 6

LEGEND

- P.B.C.R. PALM BEACH COUNTY RECORDS
- B.M. BENCH MARK
- CL CENTERLINE
- COR. CORNER
- ELEV. ELEVATION
- FDOT FLORIDA DEPARTMENT OF TRANSPORTATION
- FPL FLORIDA POWER & LIGHT
- FND. FOUND
- K & A KEITH AND ASSOCIATES
- LB LICENSE BUREAU
- O.R.B. OFFICIAL RECORD BOOK
- P.B. PLAT BOOK
- PG. PAGE
- P.S.M. PROFESSIONAL SURVEYOR MAPPER
- P.O.B. POINT OF BEGINNING
- P.O.C. POINT OF COMMENCEMENT
- P.R.M. PERMANENT REFERENCE MONUMENT
- RGE. RANGE
- R/W RIGHT OF WAY
- SEC. SECTION
- SQ. FT. SQUARE FEET
- TWP. TOWNSHIP
- U.E. UTILITY EASEMENT
- W/ WITH
- ***** LIMITED ACCESS RIGHT OF WAY

PREPARED BY:
KEITH ASSOCIATES, INC.
 consulting engineers
 301 EAST ATLANTIC BOULEVARD
 POMPANO BEACH, FLORIDA 33060-6643
 (954) 788-3400 FAX (954) 788-3500
 EMAIL: KAA100@msn.com LB NO. 6860