

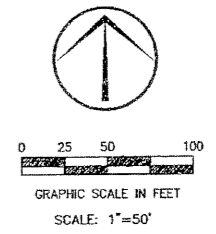
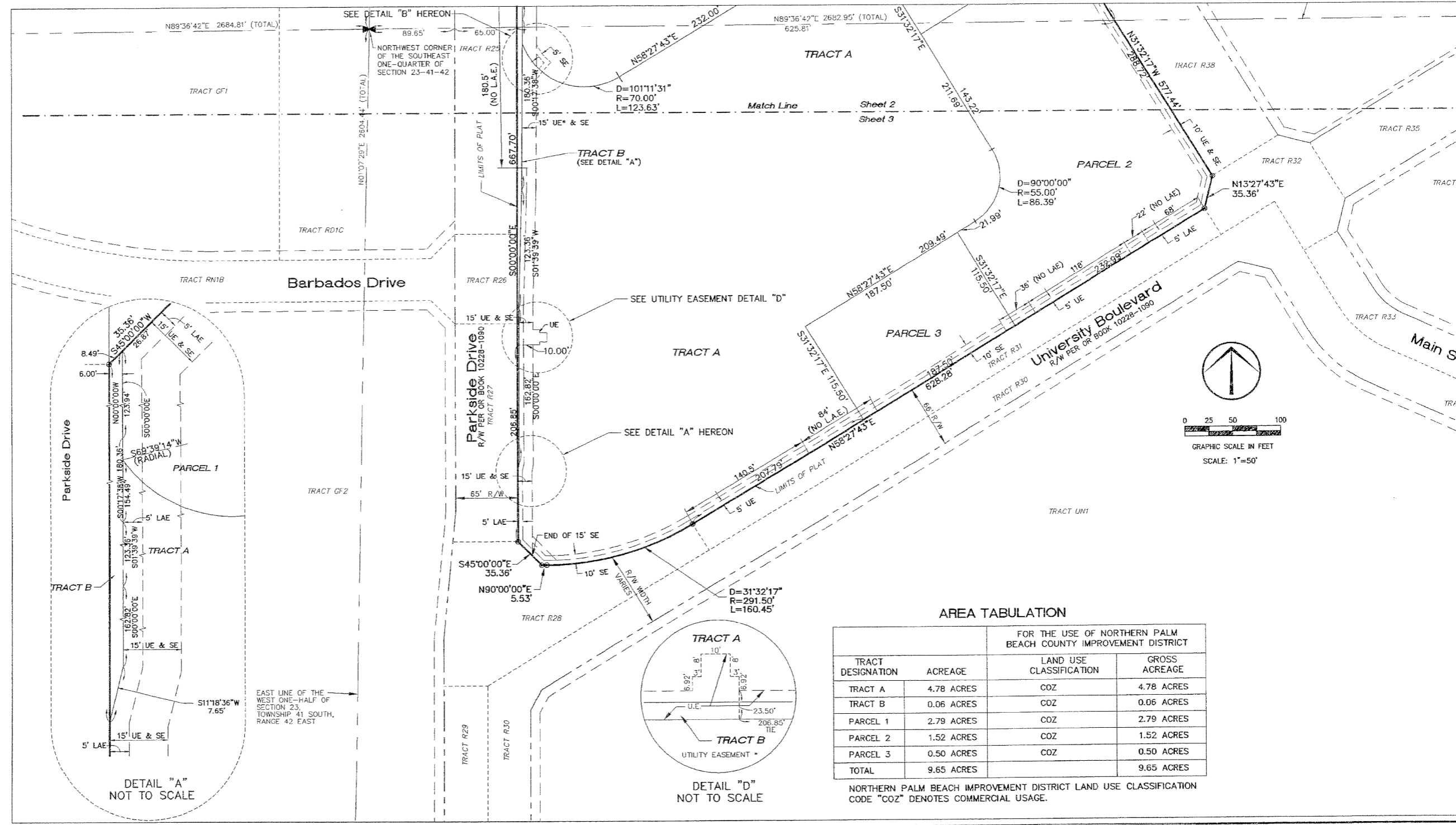
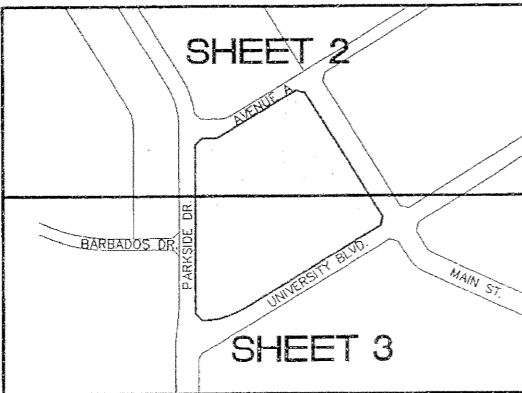
ABACOA TOWN CENTER PLAT NO. 2

A Replat of Tract TC6 of Abacoa Plat No. 1, as recorded in Plat Book 78, Pages 145 through 163, inclusive of the Public Records of Palm Beach County, Florida, lying in Section 23, Township 41 South, Range 42 East Town of Jupiter, Palm Beach County, Florida

This Instrument prepared by James E. Park, P.S.M.
Williams, Hatfield & Stoner, Inc. - Engineers Surveyors Planners Environmental Scientists
1901 South Congress Avenue, Suite 150, Boynton Beach, Florida 33426

October, 1999

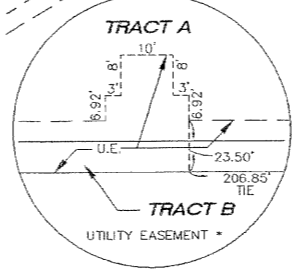
Sheet 3 of 3



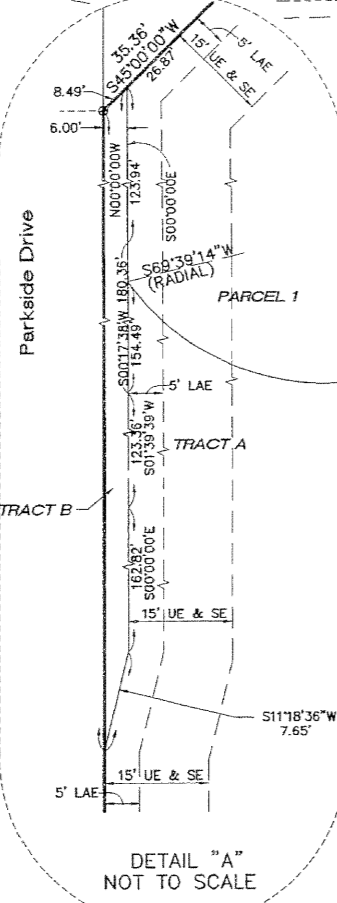
AREA TABULATION

TRACT DESIGNATION	ACREAGE	FOR THE USE OF NORTHERN PALM BEACH COUNTY IMPROVEMENT DISTRICT	
		LAND USE CLASSIFICATION	GROSS ACREAGE
TRACT A	4.78 ACRES	COZ	4.78 ACRES
TRACT B	0.06 ACRES	COZ	0.06 ACRES
PARCEL 1	2.79 ACRES	COZ	2.79 ACRES
PARCEL 2	1.52 ACRES	COZ	1.52 ACRES
PARCEL 3	0.50 ACRES	COZ	0.50 ACRES
TOTAL	9.65 ACRES		9.65 ACRES

NORTHERN PALM BEACH IMPROVEMENT DISTRICT LAND USE CLASSIFICATION CODE "COZ" DENOTES COMMERCIAL USAGE.



DETAIL "D" NOT TO SCALE



DETAIL "A" NOT TO SCALE