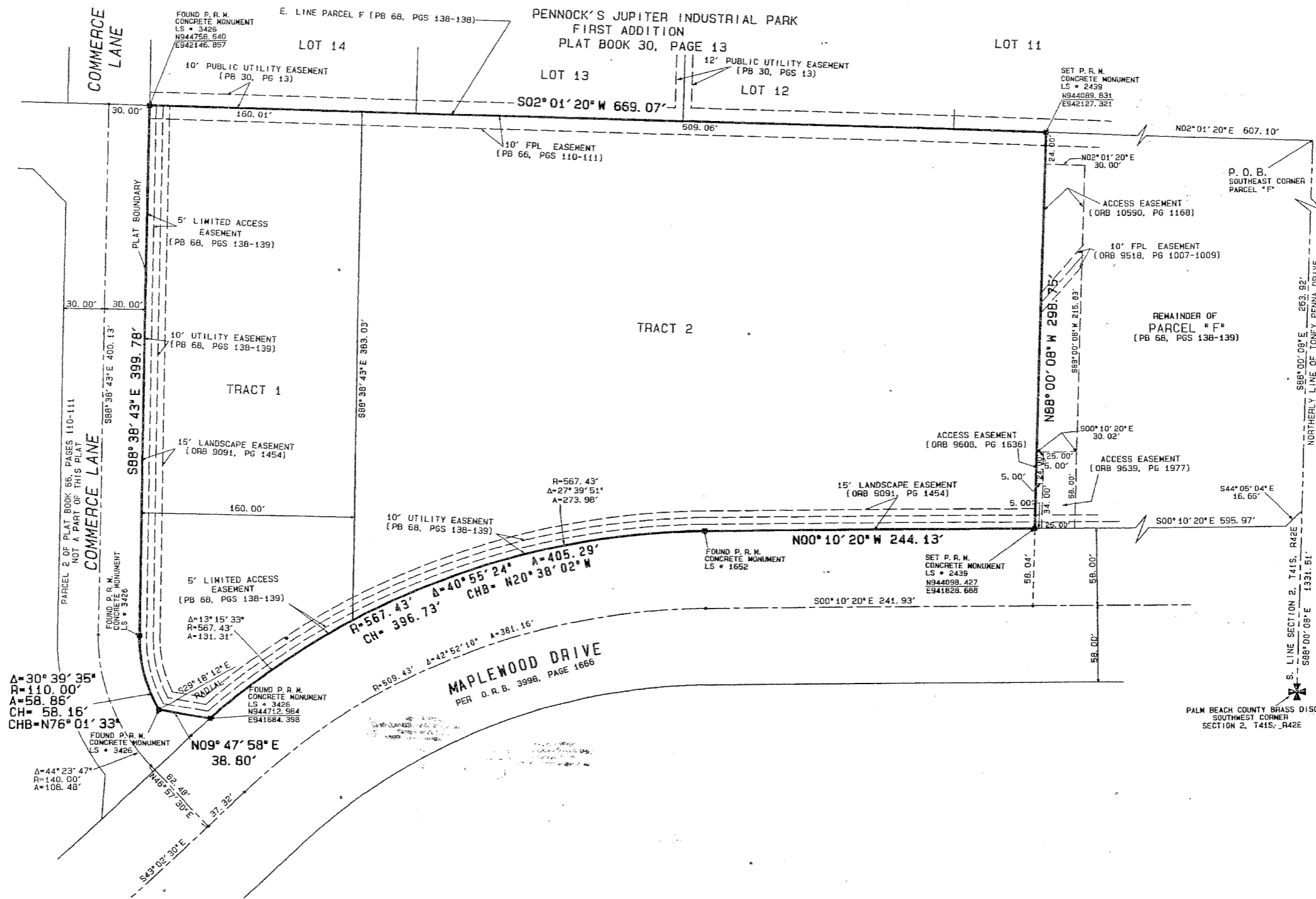
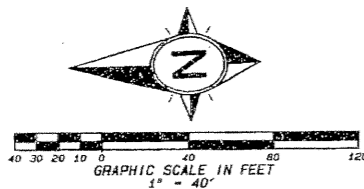


# LOXAHATCHEE BUSINESS PARK NORTH

LYING IN THE SOUTHWEST QUARTER OF SECTION 2, TOWNSHIP 41 SOUTH, RANGE 42 EAST, TOWN OF JUPITER, PALM BEACH COUNTY, FLORIDA, BEING A REPLAT OF A PORTION OF PARCEL F, MAPLEWOOD CENTER REPLAT OF PARCELS 1, 3, 4, 5 AND 6, AS RECORDED IN PLAT BOOK 68, PAGES 138-139, PUBLIC RECORDS OF PALM BEACH COUNTY, FLORIDA.

JULY 1999  
SHEET 2 OF 2



### LEGEND

- P.O.C. = POINT OF COMMENCEMENT
- P.O.B. = POINT OF BEGINNING
- Δ = DELTA ANGLE
- R = RADIUS DISTANCE
- A = ARC DISTANCE
- CH = CHORD DISTANCE
- CHB = CHORD BEARING
- P.R.M. = PERMANENT REFERENCE MONUMENT
- PB = PLAT BOOK
- PG = PAGE
- ORB = OFFICIAL RECORD BOOK
- FPL = FLORIDA POWER AND LIGHT

### SURVEYOR'S NOTES:

- 1) BEARINGS SHOWN HEREON ARE BASED UPON THE EAST LINE OF PARCEL F, MAPLEWOOD CENTER REPLAT, AS RECORDED IN PLAT BOOK 68, PAGES 138-139, BEING N02°01'20"E.
- 2) ALL DISTANCES SHOWN HEREON ARE AT GROUND LEVEL WITH A CORRECTION FACTOR OF 1.000355 TO CONVERT TO GRID DISTANCE.
- 3) COORDINATES SHOWN HEREON ARE BASED UPON DATUM = NAD 83 ADJUSTMENT, ZONE = FLORIDA EAST, LINEAR UNIT = US SURVEYING FEET. COORDINATE SYSTEM 1983 STATE PLANE TRANSVERSE MERCATOR PROJECTION. SAID COORDINATES REPRESENT THE POSITION OF CORNERS NOT NECESSARILY THE POSITION OF FOUND MONUMENTATION.
- 4) NO BUILDINGS OR ANY KIND OF CONSTRUCTION OR TREES OR OTHER OBSTRUCTIONS SHALL BE PLACED ON ANY EASEMENT WITHOUT PRIOR WRITTEN CONSENT OF ALL EASEMENT BENEFICIARIES AND ALL APPLICABLE TOWN APPROVALS OR PERMITS AS REQUIRED FOR SUCH ENCRUMPERMENTS.
- 5) WHERE DRAINAGE AND UTILITY EASEMENTS CROSS, DRAINAGE EASEMENTS SHALL TAKE PRECEDENCE.
- 6) BUILDING SETBACK LINES SHALL BE AS REQUIRED BY THE JUPITER ZONING REGULATIONS.
- 7) STATE PLANE COORDINATE BEARING ROTATION EQUATION:  
N 02°01'20" E (PLAT BEARING) 00°20'56" = COUNTER CLOCKWISE ROTATION  
N 01°40'24" E (GRID BEARING)

**DAI**  
**AND ASSOC**  
**SURVEYING**  
112 N. U.S. HWY 1  
TEQUESTA, FL 33411  
PHONE: (561) 241-1111