

THIS INSTRUMENT PREPARED BY
 DAVID P. LINDLEY
 OF
CAULFIELD AND WHEELER, INC.
 SURVEYORS - ENGINEERS - PLANNERS
 7301-A WEST PALMETTO PARK ROAD, SUITE 100A
 BOCA RATON, FLORIDA 33433 - (561)392-1991
 JUNE - 1998

ORANGE GROVE ESTATES

A PLANNED UNIT DEVELOPMENT
 A PORTION OF SECTION 26, TOWNSHIP 44 SOUTH, RANGE 41 EAST,
 VILLAGE OF WELLINGTON, PALM BEACH COUNTY, FLORIDA

NOTES COORDINATES, BEARINGS AND DISTANCES

COORDINATES NA BEARINGS SHOWN ARL GRID
 DATUM = NAD 83 1983 ADJUSTMENT
 ZONE = FLORIDA EAST
 LINEAR UNIT - US SURVEY FEET
 COORDINATE SYSTEM 1983 STATE PLANE
 TRANSVERSE MERCATOR PROJECTION

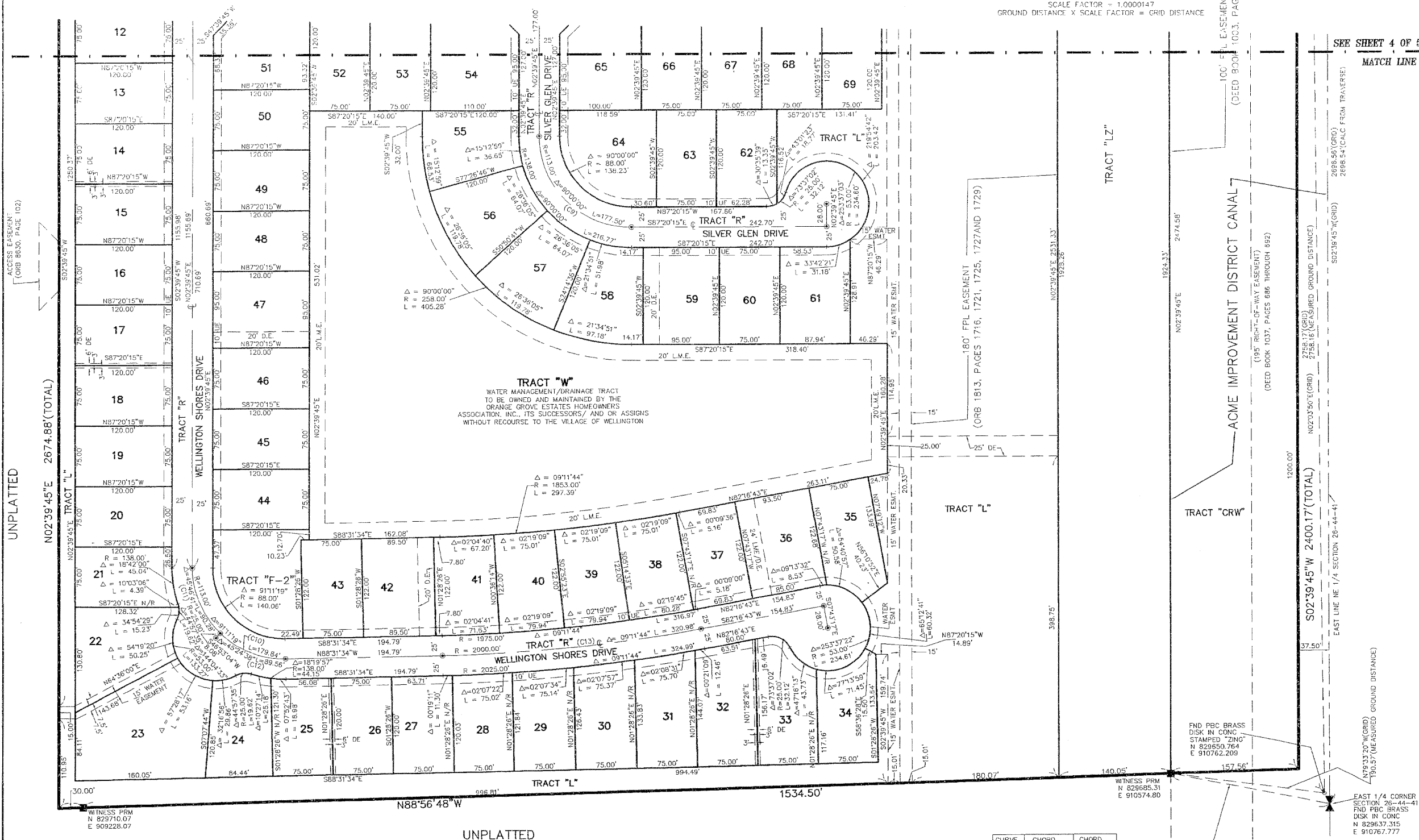
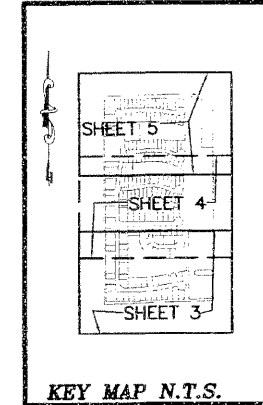
ALL DISTANCES ARE GROUND
 SCALE FACTOR = 1.0000147
 GROUND DISTANCE X SCALE FACTOR = GRID DISTANCE

100

STATE OF FLORIDA
 COUNTY OF PALM BEACH
 THIS PLAT WAS FILED FOR
 RECORD AT _____ M.
 THIS _____ DAY OF _____
 A.D. 1998 AND DULY RECORDED
 IN PLAT BOOK _____ ON
 PAGES _____ AND _____
 DOROTHY H. WILKEN
 CLERK CIRCUIT COURT

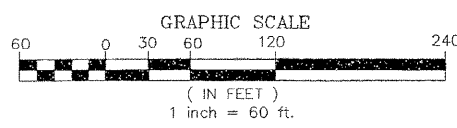
BY: _____
 DEPUTY CLERK

SHEET 3 OF 5



UNPLATTED

UNPLATTED



TABULAR DATA	
TOTAL AREA THIS PLAT	91.878 ACRES
AREA OF PRIVATE ROAD (TRACT "R", R-1, R-2)	6.906 ACRES
AREA OF RESIDENTIAL	33.749 ACRES
AREA OF LAKES (TRACTS W THROUGH W-3)	12.037 ACRES
AREA OF RECREATION (TRACTS "F", "F-1", "F-2")	2.309 ACRES
AREA OF TRACT L	18.114 ACRES
AREA OF TRACTS LZ	6.191 ACRES
AREA OF TRACT CS	1.856 ACRES
AREA OF TRACTS CRW	8.816 ACRES
TOTAL NUMBER OF UNITS	181 UNITS
DENSITY PROPOSED THIS PLAT	1.97 UNITS/ACRE
USE SINGLE FAMILY/ PATIO HOME (ZERO LOT LINE)	
PETITION NO. P. 9-1-98	

CURVE NO.	CHORD BEARING	CHORD DISTANCE
(C1)	N83°49'19"W	307.34'
(C2)	S14°45'25"W	85.01'
(C3)	S42°21'09"W	170.55'
(C4)	N64°18'42"E	104.22'
(C5)	S80°43'11"W	51.15'
(C6)	S78°33'56"E	459.84'
(C7)	N88°07'11"E	79.20'
(C8)	S82°22'00"E	242.87'
(C9)	N42°20'15"W	159.81'
(C10)	N42°55'54"W	161.46'
(C11)	N20°13'35"W	87.90'
(C12)	S65°48'15"E	87.23'
(C13)	S86°52'34"W	320.64'