

ORANGE GROVE ESTATES

A PLANNED UNIT DEVELOPMENT
A PORTION OF SECTION 26, TOWNSHIP 44 SOUTH, RANGE 41 EAST,
VILLAGE OF WELLINGTON, PALM BEACH COUNTY, FLORIDA

102

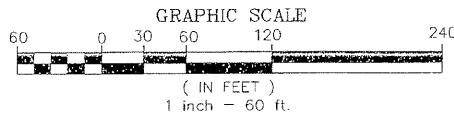
THIS INSTRUMENT PREPARED BY
DAVID P. LINDLEY

OF
CAULFIELD AND WHEELER, INC.
SURVEYORS - ENGINEERS - PLANNERS
7301-A WEST PALMETTO PARK ROAD, SUITE 100A
BOCA RATON, FLORIDA 33433 - (561)392-1991
JUNE - 1998

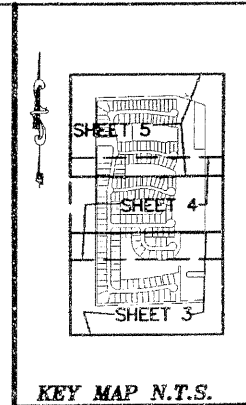
NOTES COORDINATES, BEARINGS AND DISTANCES

COORDINATES AND BEARINGS SHOWN ARE GRID
DATUM = NAD 83 1990 ADJUSTMENT
ZONE = FLORIDA EAST
LINEAR UNIT = US SURVEY FEET
COORDINATE SYSTEM 1983 STATE PLANE
TRANSVERSE MERCATOR PROJECTION

ALL DISTANCES ARE GROUND
SCALE FACTOR = 1.0000147
GROUND DISTANCE X SCALE FACTOR = GRID DISTANCE



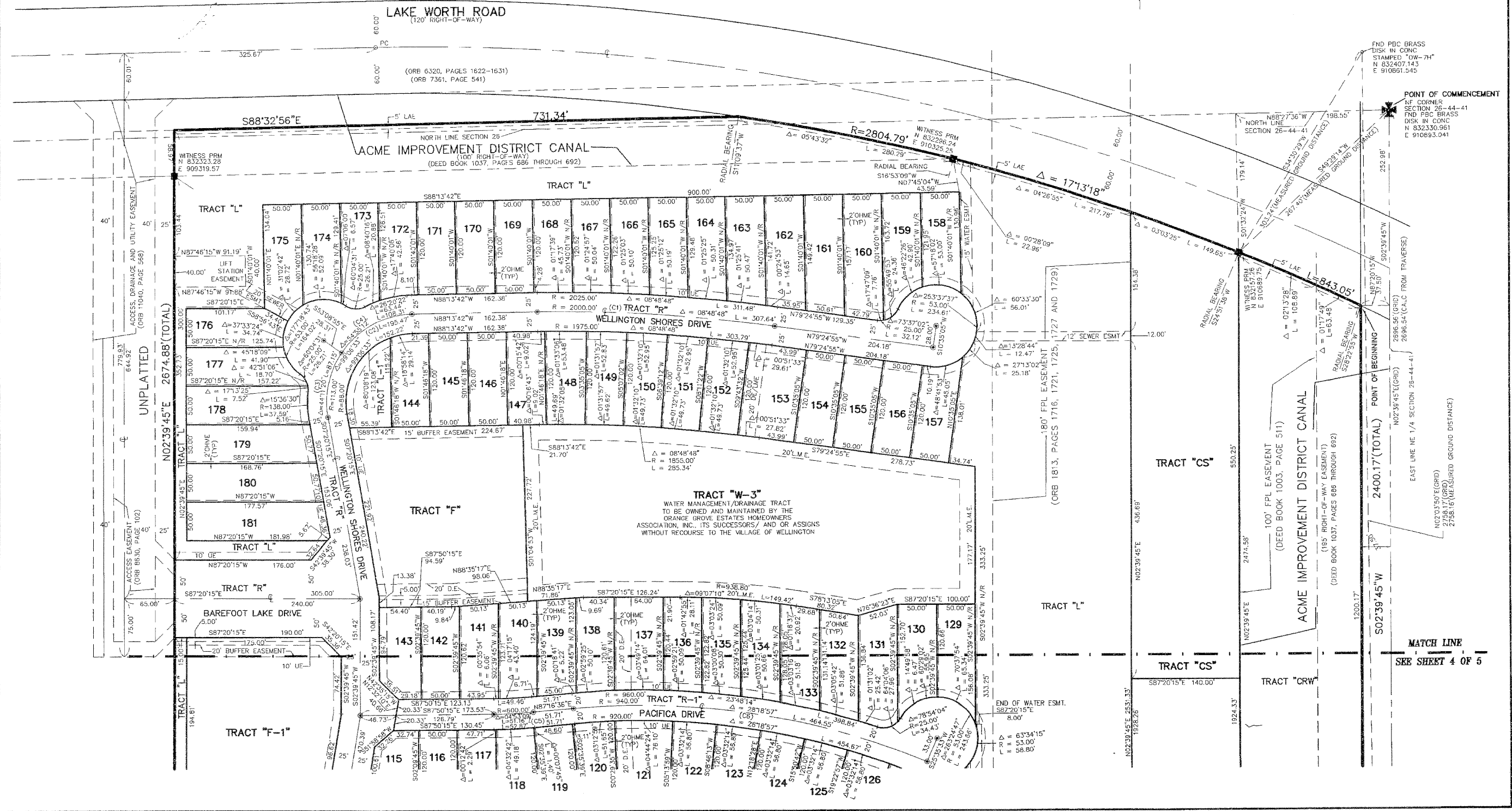
CURVE NO.	CHORD BEARING	CHORD DISTANCE
(C1)	N83°49'19"W	307.34'
(C2)	S14°45'25"W	85.01'
(C3)	S42°21'09"W	170.55'
(C4)	N64°18'42"E	104.22'
(C5)	S89°43'11"W	51.15'
(C6)	S78°33'56"E	459.84'
(C7)	N88°07'11"E	79.20'
(C8)	S82°22'00"E	242.87'
(C9)	N42°20'15"W	159.81'
(C10)	N42°55'54"W	161.46'
(C11)	N20°13'35"W	87.90'
(C12)	S65°49'15"E	87.23'
(C13)	S86°52'34"W	320.64'



STATE OF FLORIDA
COUNTY OF PALM BEACH
THIS PLAT WAS FILED FOR
RECORD AT _____ M.
THIS _____ DAY OF _____
A.D. 1998 AND DULY RECORDED
IN PLAT BOOK _____ ON
PAGES _____ AND _____
DOROTHY H. WILKEN
CLERK CIRCUIT COURT

BY: _____
DEPUTY CLERK

SHEET 5 OF 5



FIND PBC BRASS
DISK IN CONC.
STAMPED "OW-7H"
N 832407.143
E 910861.545

POINT OF COMMENCEMENT
NF CORNER
SECTION 26-44-41
FIND PBC BRASS
DISK IN CONC
N 832330.961
E 910893.041

MATCH LINE
SEE SHEET 4 OF 5