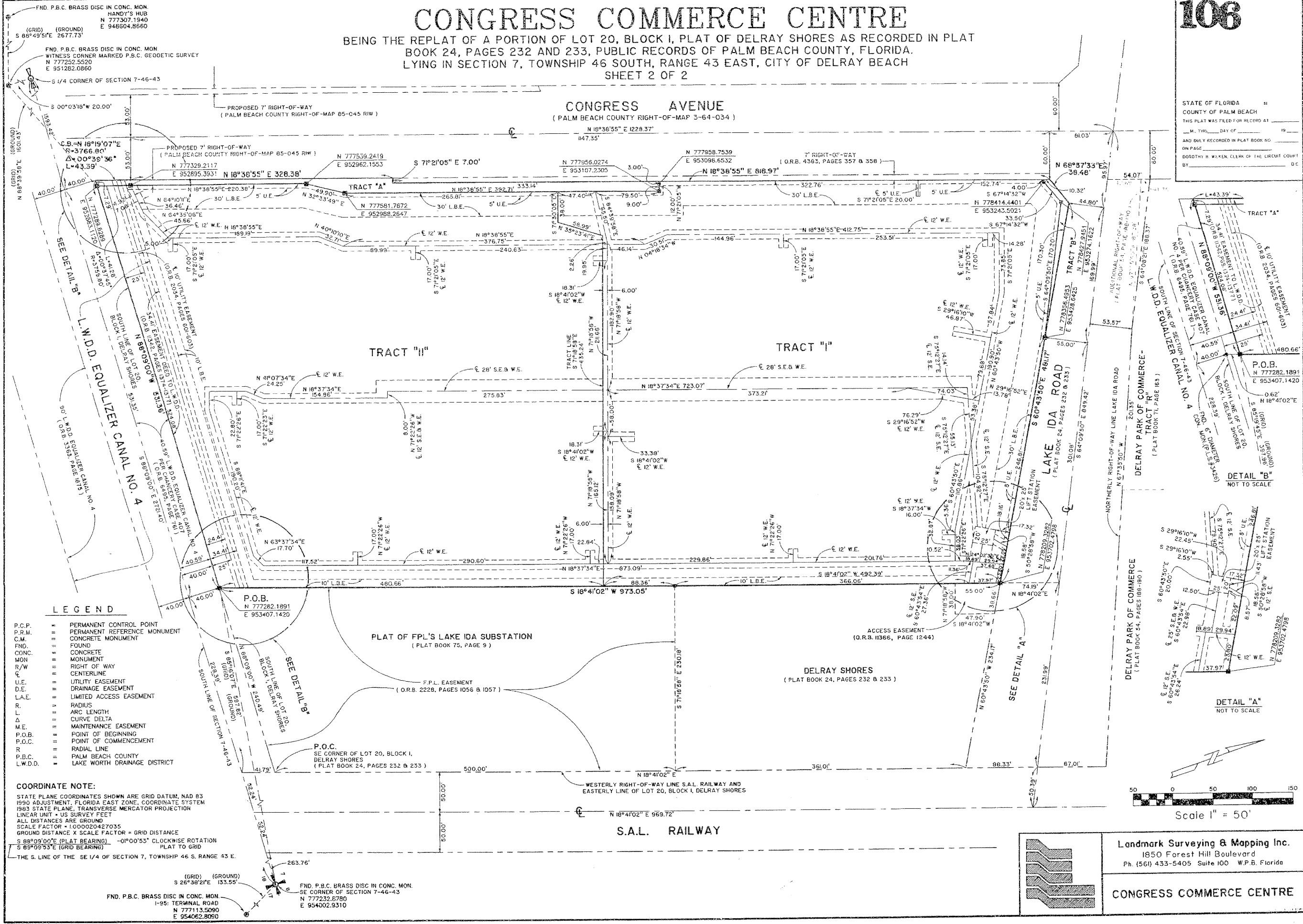


# CONGRESS COMMERCE CENTRE

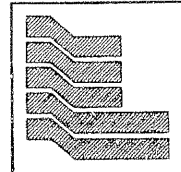
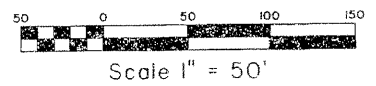
BEING THE REPLAT OF A PORTION OF LOT 20, BLOCK I, PLAT OF DELRAY SHORES AS RECORDED IN PLAT BOOK 24, PAGES 232 AND 233, PUBLIC RECORDS OF PALM BEACH COUNTY, FLORIDA. LYING IN SECTION 7, TOWNSHIP 46 SOUTH, RANGE 43 EAST, CITY OF DELRAY BEACH SHEET 2 OF 2



STATE OF FLORIDA  
COUNTY OF PALM BEACH  
THIS PLAT WAS FILED FOR RECORD BY  
M. THIS DAY OF 19  
AND DULY RECORDED IN PLAT BOOK NO.  
ON PAGE  
DOROTHY H. WAKEN, CLERK OF THE CIRCUIT COURT  
BY

- LEGEND**
- P.C.P. PERMANENT CONTROL POINT
  - P.R.M. PERMANENT REFERENCE MONUMENT
  - C.M. CONCRETE MONUMENT
  - FND. FOUND CONCRETE MONUMENT
  - R/W RIGHT OF WAY
  - C CENTERLINE
  - U.E. UTILITY EASEMENT
  - D.E. DRAINAGE EASEMENT
  - L.A.E. LIMITED ACCESS EASEMENT
  - R. RADIUS
  - L. ARC LENGTH
  - Δ. CURVE DELTA
  - M.E. MAINTENANCE EASEMENT
  - P.O.B. POINT OF BEGINNING
  - P.O.C. POINT OF COMMENCEMENT
  - R. RADIAL LINE
  - P.B.C. PALM BEACH COUNTY
  - L.W.D.D. LAKE WORTH DRAINAGE DISTRICT

**COORDINATE NOTE:**  
STATE PLANE COORDINATES SHOWN ARE GRID DATUM, NAD 83 1990 ADJUSTMENT, FLORIDA EAST ZONE, COORDINATE SYSTEM 1983 STATE PLANE, TRANSVERSE MERCATOR PROJECTION LINEAR UNIT - US SURVEY FEET  
ALL DISTANCES ARE GROUND  
SCALE FACTOR = 1.000020427035  
GROUND DISTANCE X SCALE FACTOR = GRID DISTANCE  
S 88°09'00"E (PLAT BEARING) -01°00'53" CLOCKWISE ROTATION PLAT TO GRID  
S 89°09'53"E (GRID BEARING)



Landmark Surveying & Mapping Inc.  
1850 Forest Hill Boulevard  
Ph. (561) 433-5405 Suite 100 W.P.B. Florida

**CONGRESS COMMERCE CENTRE**