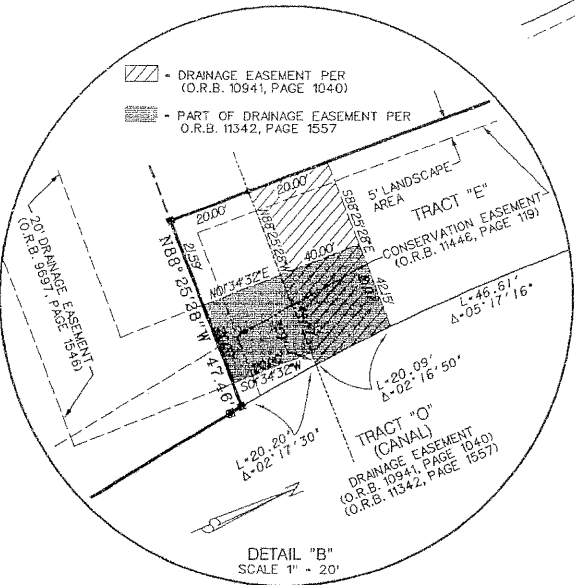
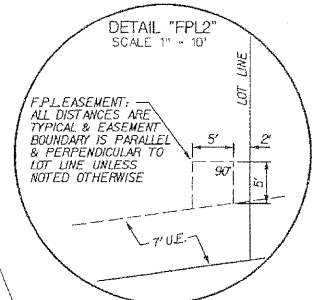
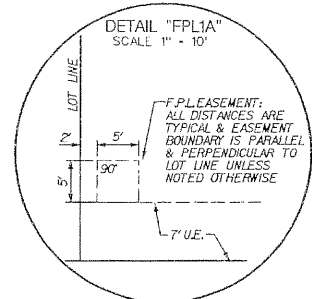
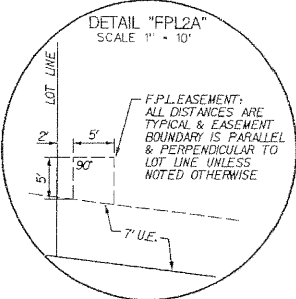
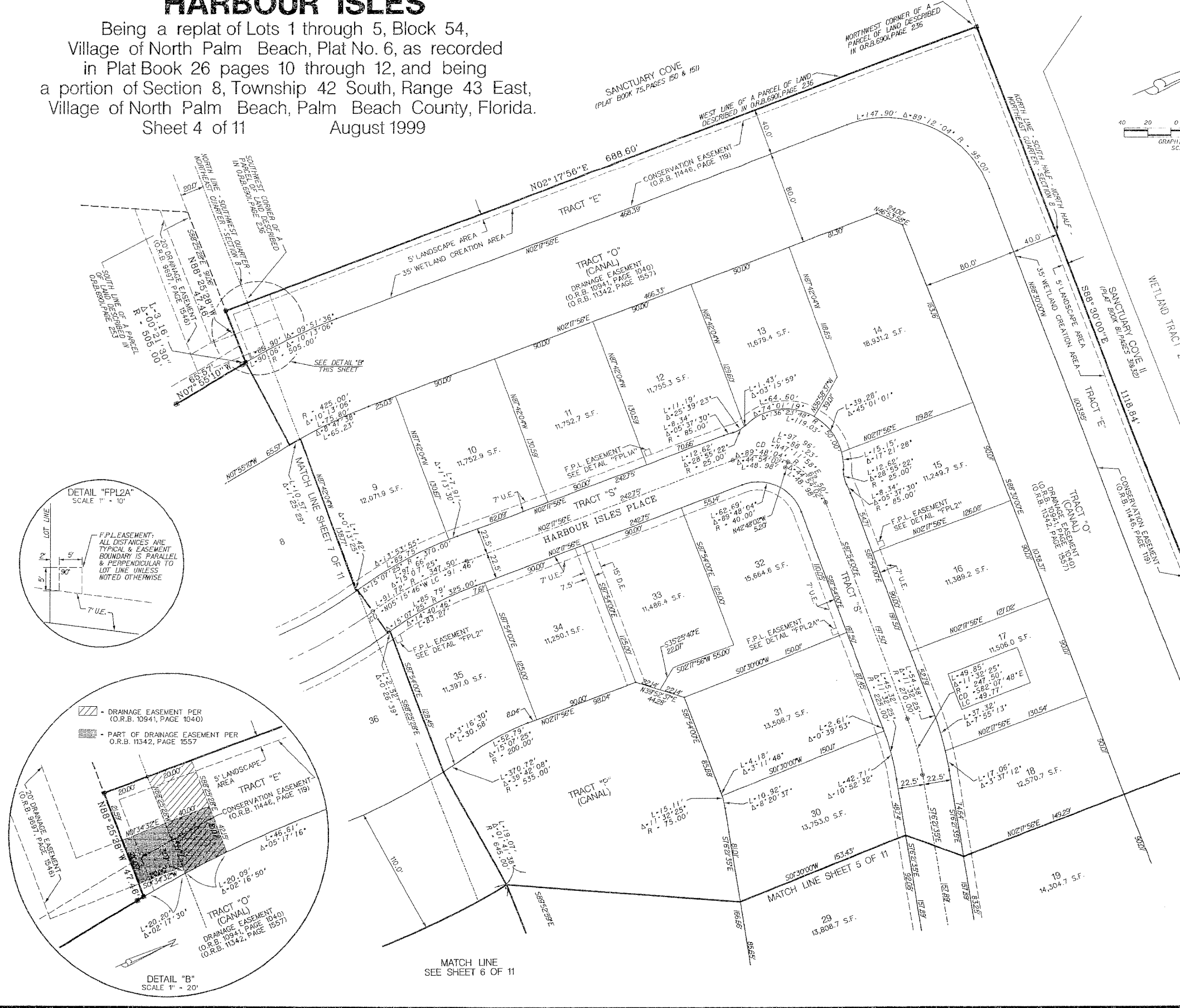
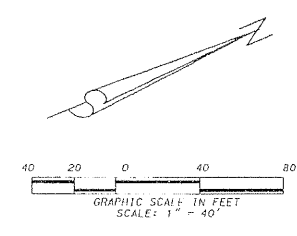


HARBOUR ISLES

Being a replat of Lots 1 through 5, Block 54,
 Village of North Palm Beach, Plat No. 6, as recorded
 in Plat Book 26 pages 10 through 12, and being
 a portion of Section 8, Township 42 South, Range 43 East,
 Village of North Palm Beach, Palm Beach County, Florida.
 Sheet 4 of 11 August 1999

114



MATCH LINE
 SEE SHEET 6 OF 11

LIDBERG LAND SURVEYING, INC.
 LB4431 679 West Indiantown Road, Suite 200, Jupiter, Florida 33458 TEL: 561-746-8454

CAD: K:\USTATION \ SECTION \ 08-42-43 \ 96-594 \ SHEET4.DGN			
REF: K:\USTATION \ SECTION \ 08-42-43 \ 96-594 \ 96-594.DGN			
FLD.	FB.	PG.	JOB 96-594
OFF. R.W.			DATE 10/14/96
CKD. D.C.L.	SHEET 4 OF 11	DWG.	096-594P