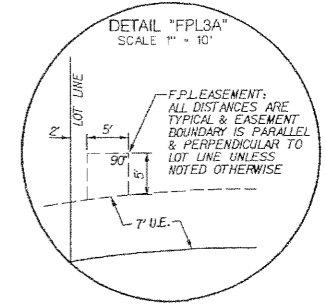
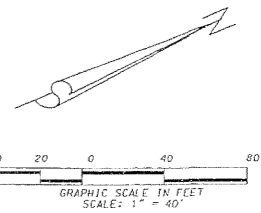
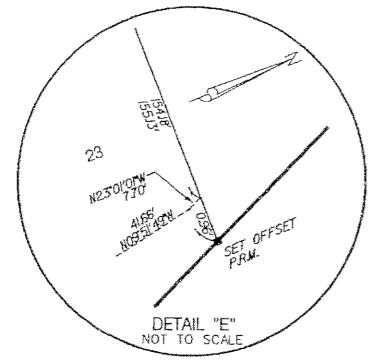
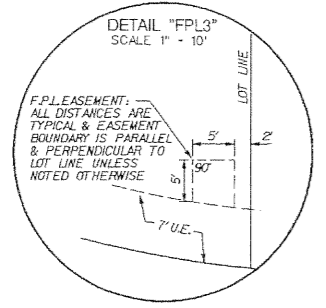
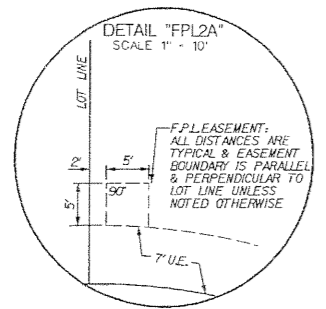
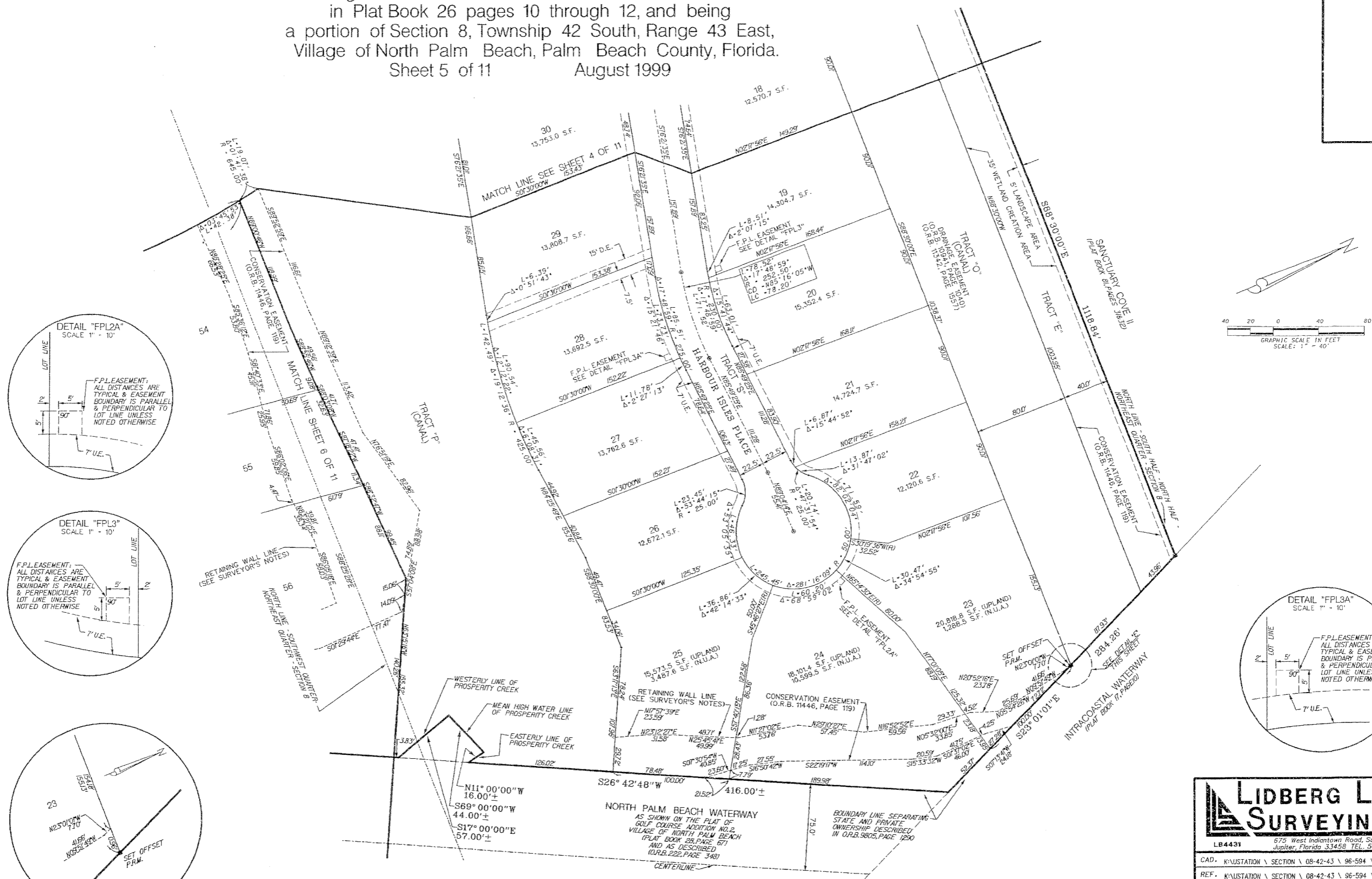


HARBOUR ISLES

Being a replat of Lots 1 through 5, Block 54,
 Village of North Palm Beach, Plat No. 6, as recorded
 in Plat Book 26 pages 10 through 12, and being
 a portion of Section 8, Township 42 South, Range 43 East,
 Village of North Palm Beach, Palm Beach County, Florida.
 Sheet 5 of 11 August 1999



LIDBERG LAND SURVEYING, INC.
 675 West Indiantown Road, Suite 200,
 Jupiter, Florida 33458 TEL. 561-746-8454

LB4431			
CAD. K:\STATION \ SECTION \ 08-42-43 \ 96-594 \ SHEETS.DGN			
REF. K:\STATION \ SECTION \ 08-42-43 \ 96-594 \ 96-594.DGN			
FLD.	FB.	PG.	JOB 96-594
OFF. R.W.		DATE	10/14/96
CKD. D.C.L.	SHEET 5 OF 11	DWG.	D96-594P