

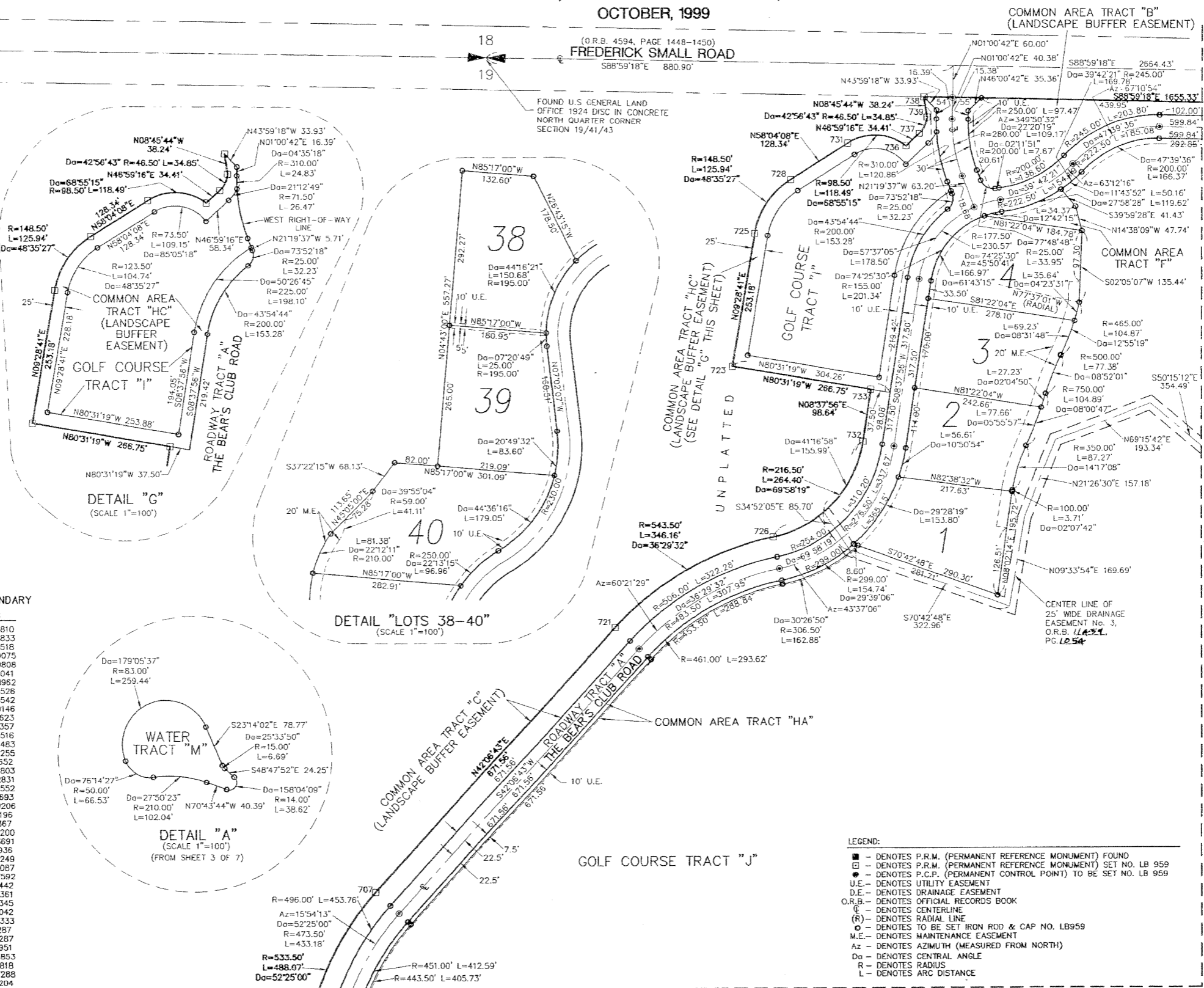
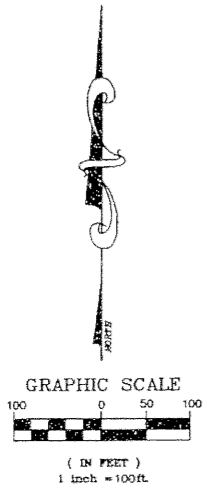
BEAR'S CLUB, A P.U.D.

LYING IN SECTIONS 19 & 20, TOWNSHIP 41 SOUTH, RANGE 43 EAST
TOWN OF JUPITER, PALM BEACH COUNTY, FLORIDA

OCTOBER, 1999

(O.R.B. 4594, PAGE 1448-1450)
FREDERICK SMALL ROAD
S88°59'18"E 880.90'

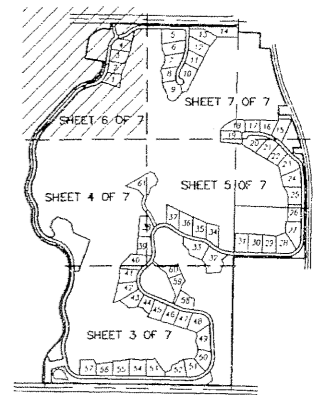
FOUND U.S. GENERAL LAND OFFICE 1924 DISC IN CONCRETE NORTH QUARTER CORNER SECTION 19/41/43



STATE PLANE COORDINATES FOR BOUNDARY

NO.	NORTHING	EASTING
316	932806.7279	956509.0810
317	932802.8843	956326.8833
322	927602.9143	956409.0518
338	929460.9755	956443.9075
427	932700.0423	956505.9808
428	932697.1290	956557.0041
430	932690.3066	956826.8962
431	932470.3266	956822.5526
432	932465.9199	956972.0542
433	932439.7839	956975.9146
436	931639.0810	957096.6623
437	931509.0926	957094.1357
438	931505.6672	957269.4516
439	931467.5556	957285.4483
440	931026.6707	957429.2255
441	931029.1458	957300.9652
442	930947.7347	957319.9803
443	930945.2769	957447.2831
444	930317.7857	957505.0552
445	930163.0733	957501.8693
446	929440.8282	957487.9206
447	931636.7802	957214.4196
448	931739.9009	957171.1367
702	930609.4410	953475.6200
703	930884.7583	953509.3691
704	930220.1488	953513.1936
705	930094.6039	953541.2249
707	931337.9980	953638.5087
709	927652.7340	953693.7592
710	927850.0260	953701.6442
712	929643.3948	953833.8361
714	928213.3396	953883.5345
716	928566.1082	953974.4042
717	928962.4499	954006.4333
719	929336.1791	954074.1287
720	929204.4915	954074.1287
721	931836.2426	954088.8951
723	932325.8025	954307.6853
725	932575.5571	954349.3818
726	932004.5880	954384.7288
728	932677.1443	954417.3204
731	932745.0291	954526.2497
732	932184.3427	954556.0181
733	932281.8715	954570.8242
736	932740.1095	954637.6234
737	932763.5849	954662.7868
738	932832.1141	954671.6259
739	932794.3114	954677.4525

- LEGEND:
- - DENOTES P.R.M. (PERMANENT REFERENCE MONUMENT) FOUND
 - - DENOTES P.R.M. (PERMANENT REFERENCE MONUMENT) SET NO. LB 959
 - - DENOTES P.C.P. (PERMANENT CONTROL POINT) TO BE SET NO. LB 959
 - U.E. - DENOTES UTILITY EASEMENT
 - D.E. - DENOTES DRAINAGE EASEMENT
 - O.R.B. - DENOTES OFFICIAL RECORDS BOOK
 - - DENOTES CENTERLINE
 - (R) - DENOTES RADIAL LINE
 - - DENOTES TO BE SET IRON ROD & CAP NO. LB959
 - M.E. - DENOTES MAINTENANCE EASEMENT
 - Az - DENOTES AZIMUTH (MEASURED FROM NORTH)
 - Da - DENOTES CENTRAL ANGLE
 - R - DENOTES RADIUS
 - L - DENOTES ARC DISTANCE



LINDAHL, BROWNING, FERRARI, & HELLSTROM, INC.
CONSULTING ENGINEERS, SURVEYORS & MAPPERS

2090 PALM BEACH LAKES BLVD. SUITE 200 PALM BEACH, FL 33480
561-684-9379

2550 S.W. CORPORATE PKWY SUITE 200 WEST PALM BEACH, FL 33409
561-296-3883

2222 COLONIAL ROAD SUITE 200 FT. PIERCE, FL 34950
561-746-9248

421 N.W. 3RD STREET OKLAHOMA, FL 33076
561-461-9425

6 7
Sheet of