

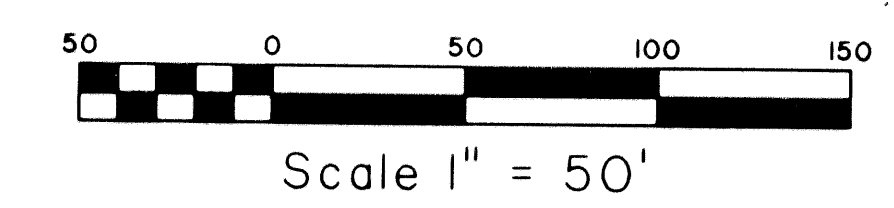
DELAY TRAINING CENTER P.U.D. - PARCEL A

131

BEING A REPLAT OF PARCEL - A, DELAY TRAINING CENTER - PLAT ONE, AS RECORDED IN PLAT BOOK 222, PAGES 60 THROUGH 61, PUBLIC RECORDS OF PALM BEACH COUNTY, FLORIDA, LYING IN SECTIONS 20 AND 29, TOWNSHIP 46 SOUTH, RANGE 42 EAST, PALM BEACH COUNTY, FLORIDA.
SHEET 2 OF 2

N 1/4 CORNER OF SECTION 21, TOWNSHIP 46S, RANGE 42E
FND. P.B.C. BRASS DISK IN ROUND CONCRETE MONUMENT STAMPED 16/21
'90 N = 771479.030
'90 E = 929859.146

FND. P.B.C. BRASS DISK IN CONCRETE STAMPED SSP 17
'90 N = 771503.695
'90 E = 926246.621

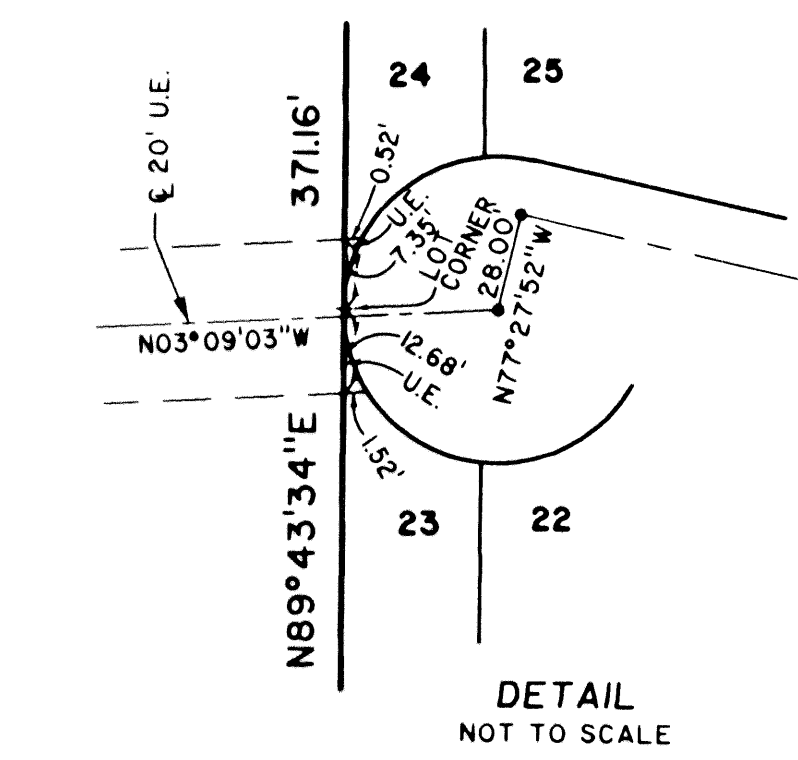
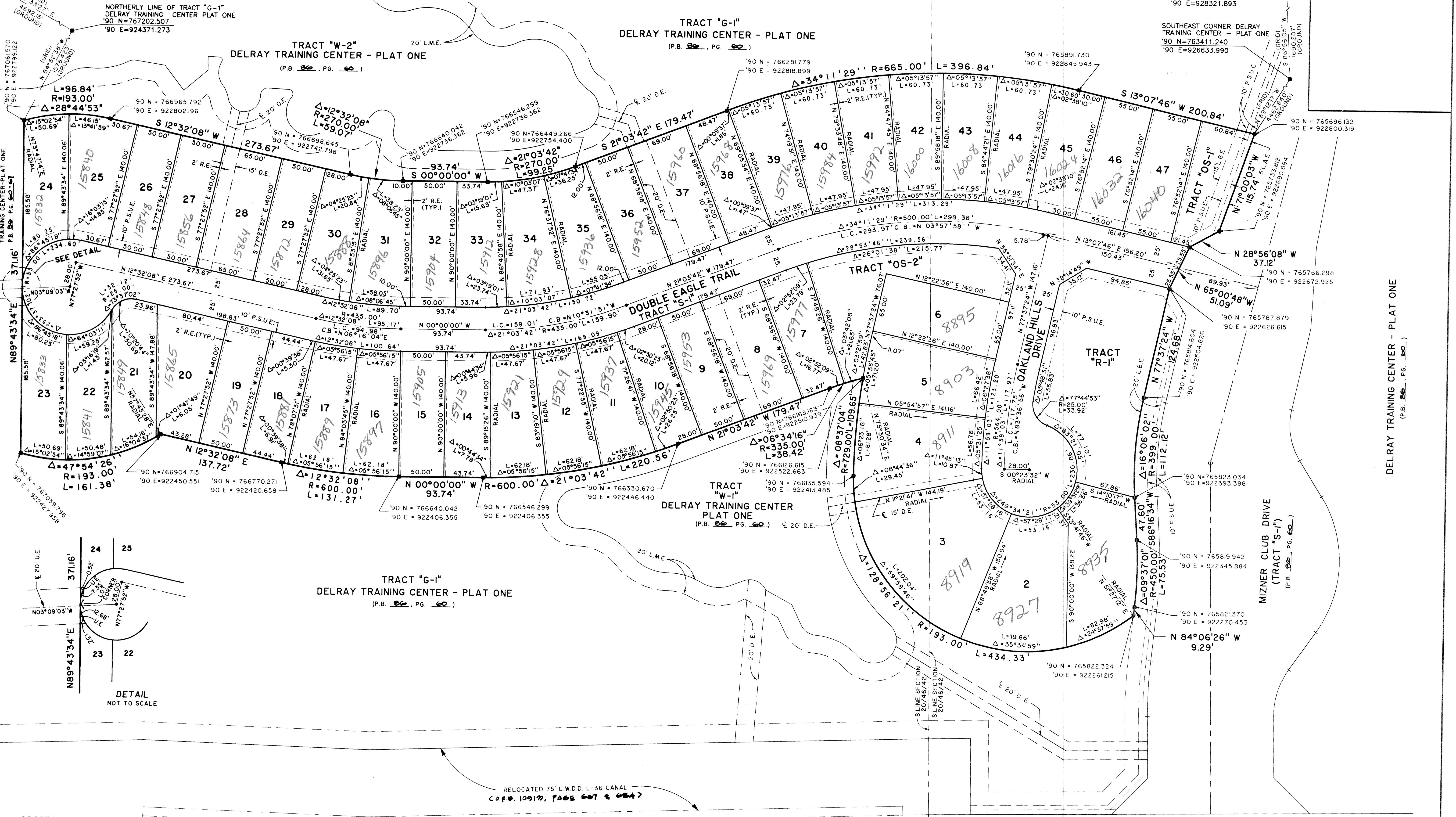


0664-002
FND. P.B.C. BRASS DISK IN ROUND CONCRETE MONUMENT STAMPED GAST
'90 N = 765358.300
'90 E = 931367.350

FND. P.B.C. BRASS DISK IN ROUND CONCRETE MONUMENT STAMPED GATTO
'90 N = 763501.631
'90 E = 928321.893

SOUTHEAST CORNER DELAY TRAINING CENTER - PLAT ONE
'90 N = 763411.240
'90 E = 926633.990

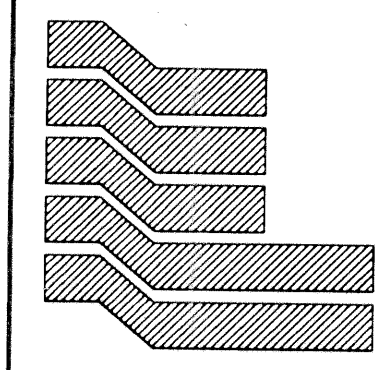
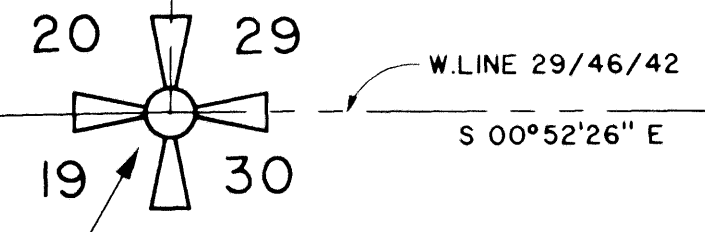
FND. P.B.C. BRASS DISK IN ROUND CONCRETE MONUMENT STAMPED GATTO
'90 N = 763501.631
'90 E = 928321.893



COORDINATE NOTE:
STATE PLANE COORDINATES SHOWN ARE GRID DATUM, NAD 83 1990 ADJUSTMENT, FLORIDA EAST ZONE, COORDINATE SYSTEM 1983 STATE PLANE, TRANSVERSE MERCATOR PROJECTION
LINEAR UNIT - US SURVEY FEET
ALL DISTANCES ARE GROUND
SCALE FACTOR = 1.000020427035
GROUND DISTANCE X SCALE FACTOR = GRID DISTANCE
BEARINGS AS SHOWN HERON ARE GRID DATUM, NAD 83 1990 ADJUSTMENT, FLORIDA EAST ZONE.

LYONS ROAD (FORMERLY ONE MILE ROAD)

SW CORNER OF SECTION 20 & NW CORNER OF SECTION 29 TOWNSHIP 46 S., RANGE 42 E.



Landmark Surveying & Mapping Inc.
1850 Forest Hill Boulevard
Ph. (561) 433-5405 Suite 100 W.P.B. Florida

DELAY TRAINING CENTER P.U.D. - PARCEL A