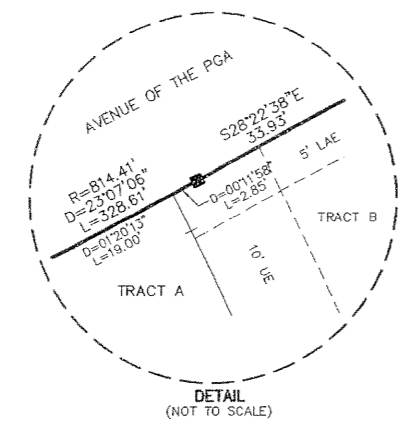
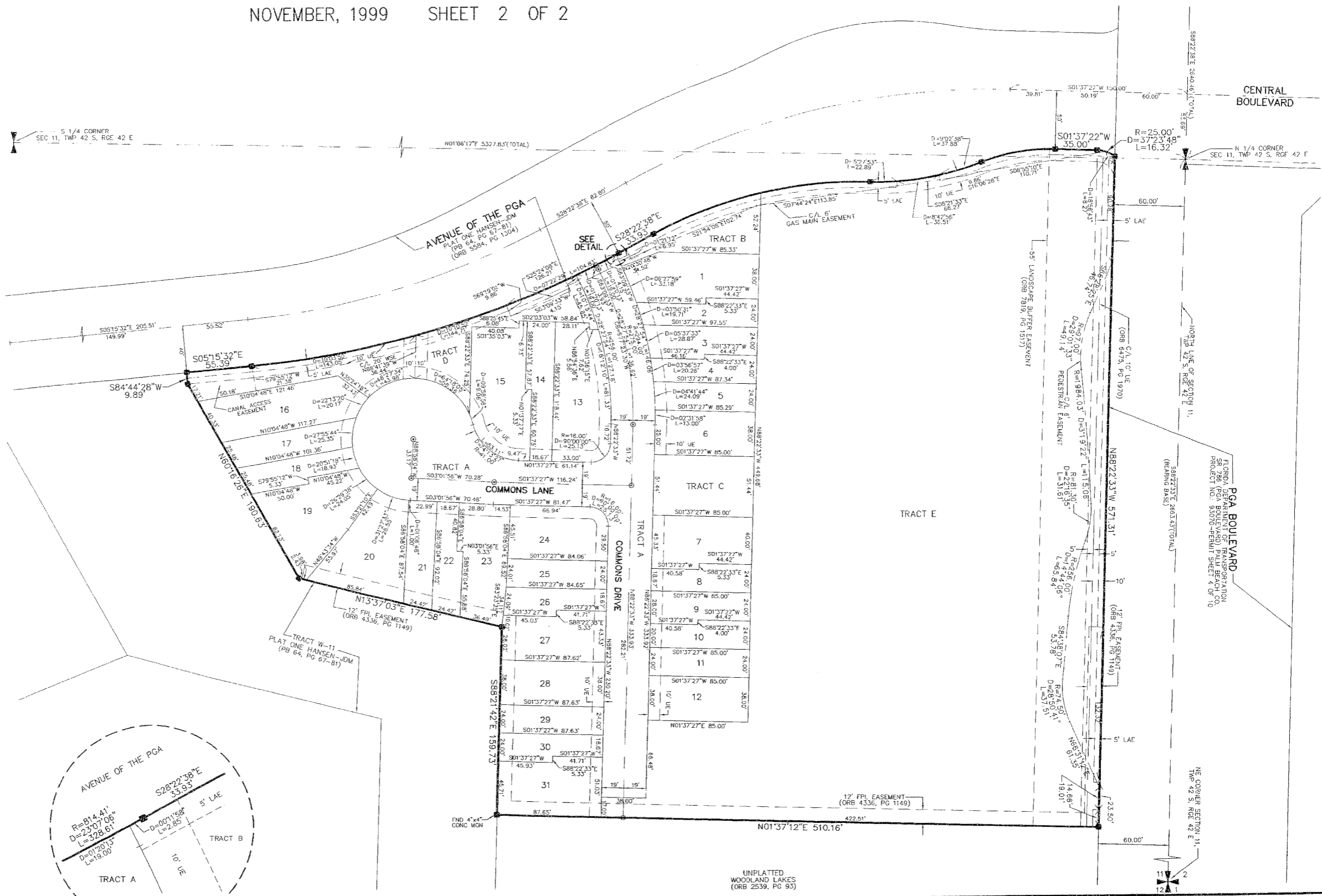
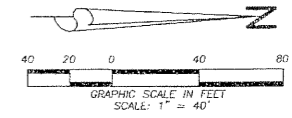


# PGA COMMONS PLAT NO. 1

LYING IN SECTION 11, TOWNSHIP 42 SOUTH, RANGE 42 EAST,  
CITY OF PALM BEACH GARDENS, PALM BEACH COUNTY, FLORIDA

NOVEMBER, 1999 SHEET 2 OF 2



UNPLATTED  
WOODLAND LAKES  
(ORB 2539, PG 93)

**LIDBERG LAND SURVEYING, INC.**  
 575 West Indiantown Road, Suite 200,  
 Jupiter, Florida 33458 TEL: 561-746-8454  
 LB4431

CAD	K:\AUTOCAD\CHANCOMMA\2687-306.DWG		
REF	K:\AUTOCAD\CHANCOMMA\COMM01.DWG		
FLD	FB.	PC.	JOB
OFF	A. J. P.		DATE
CKD	D. C. L.	SHEET 2 OF 2	DWG