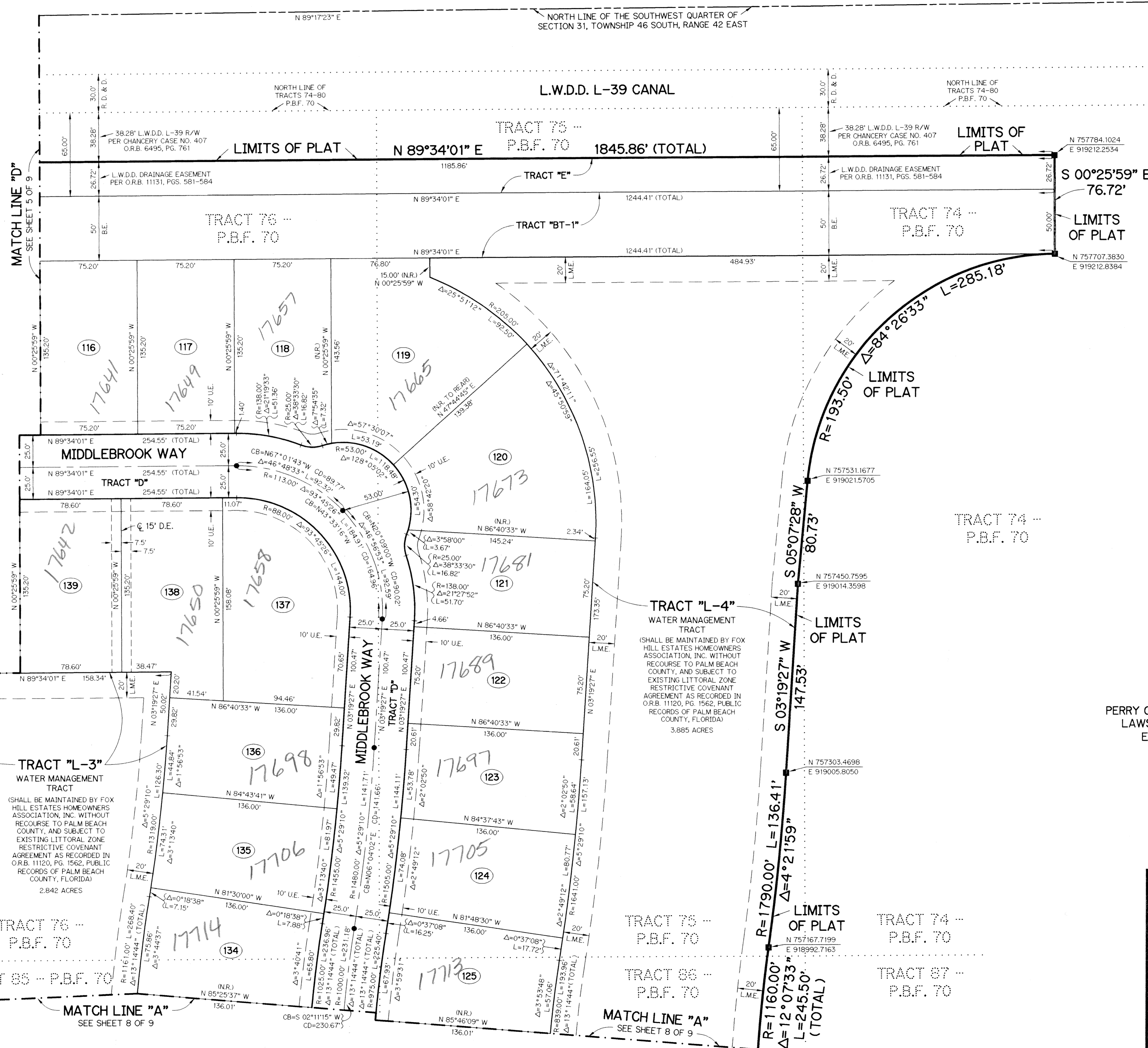
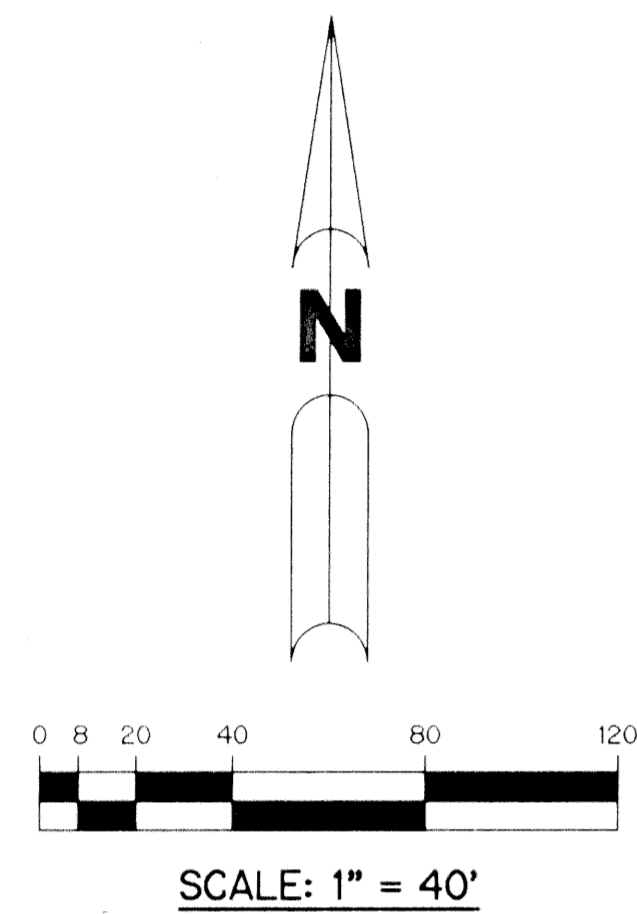


# FOX HILL ESTATES OF BOCA RATON

BEING A REPLAT OF A PARCEL OF LAND LYING WITHIN TRACTS 74-87, 108-112, BLOCK 70, PALM BEACH FARMS COMPANY PLAT NO. 3, PLAT BOOK 2, PAGE 45, WITH RIGHT-OF-WAY QUIT-CLAIMED PER OFFICIAL RECORD BOOK 9075, PAGE 1600 ALL OF THE PUBLIC RECORDS OF PALM BEACH COUNTY, FLORIDA. LYING IN SECTION 31, TOWNSHIP 46 SOUTH, RANGE 42 EAST.



- LEGEND:**
- - SET PERMANENT REFERENCE MONUMENT, LB-6674
  - - PERMANENT CONTROL POINT, PSM #4213
  - Δ - DELTA ANGLE
  - BE - BUFFER EASEMENT
  - CB - CHORD BEARING
  - CD - CHORD DISTANCE
  - C - CENTERLINE
  - DB - DEED BOOK
  - DE - DRAINAGE EASEMENT
  - L - ARC LENGTH
  - L.A.E. - LIMITED ACCESS EASEMENT
  - L.M.A.E. - LAKE MAINTENANCE ACCESS EASEMENT
  - L.M.E. - LAKE MAINTENANCE EASEMENT
  - L.W.D.D. - LAKE WORTH DRAINAGE DISTRICT
  - NR - NOT RADIAL
  - N.T.S. - NOT TO SCALE
  - O.E. - OVERHANG EASEMENT
  - O.R.B. - OFFICIAL RECORD BOOK
  - P.B. - PLAT BOOK
  - P.B.F. - PALM BEACH FARMS COMPANY PLAT NO. 3 (P.B. 2, PGS. 45-54)
  - P.B.F. 70 - BLOCK 70, P.B.F.
  - PGS. - PAGES
  - P.S.M. - PROFESSIONAL SURVEYOR AND MAPPER
  - R - RADIUS
  - R.D. & D. - ROAD, DITCH & DYKE RESERVATION (P.B. 2, PGS. 45-54)
  - R/W - RIGHT-OF-WAY
  - S.T. - SURVEY TIE
  - U.E. - UTILITY EASEMENT
  - N 737648.0171 E 905258.2326 - DENOTES STATE PLANE COORDINATES

**NOTE:**  
 COORDINATES SHOWN ARE GRID COORDINATES  
 DATUM = NAD 83 (1990 ADJUSTMENT)  
 ZONE = FLORIDA EAST ZONE  
 LINEAR UNIT = U.S. SURVEY FEET  
 COORDINATE SYSTEM 1983 STATE PLANE  
 TRANSVERSE MERCATOR PROJECTION  
 ALL DISTANCES ARE GROUND  
 SCALE FACTOR = 1.00002099  
 N 01°26'42" W (PLAT BEARING)  
 N 01°26'42" W (GRID BEARING)  
 (PLAT = GRID)

SUBDIVISION Fox Hill Estates  
 BOOK 87  
 FLOOD ZONE 0  
 QUID# 53  
 SE 971104  
 TAZ 880  
 PUD NAME Rainbow PUD

THIS INSTRUMENT PREPARED BY  
 PERRY C. WHITE, P.S.M. 4213, STATE OF FLORIDA  
 LAWSON, NOBLE AND WEBB, INC., LB-6674  
 ENGINEERS PLANNERS SURVEYORS  
 420 COLUMBIA DRIVE, SUITE 110  
 WEST PALM BEACH, FLORIDA

