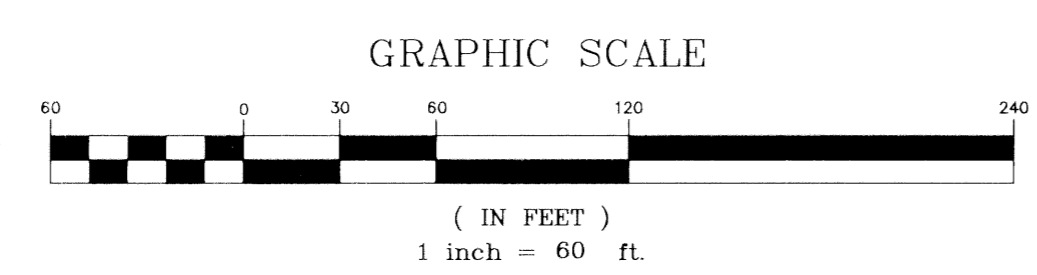
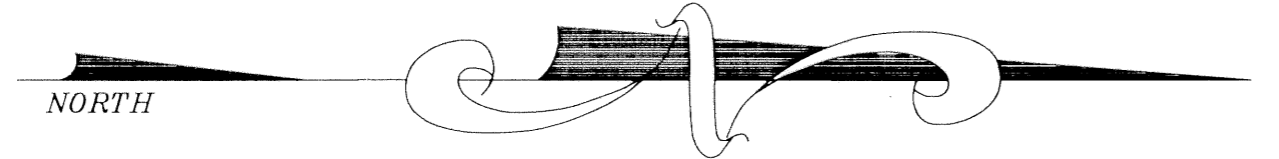
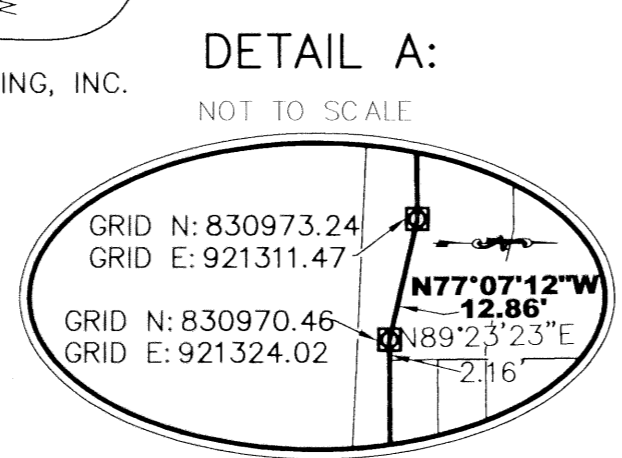
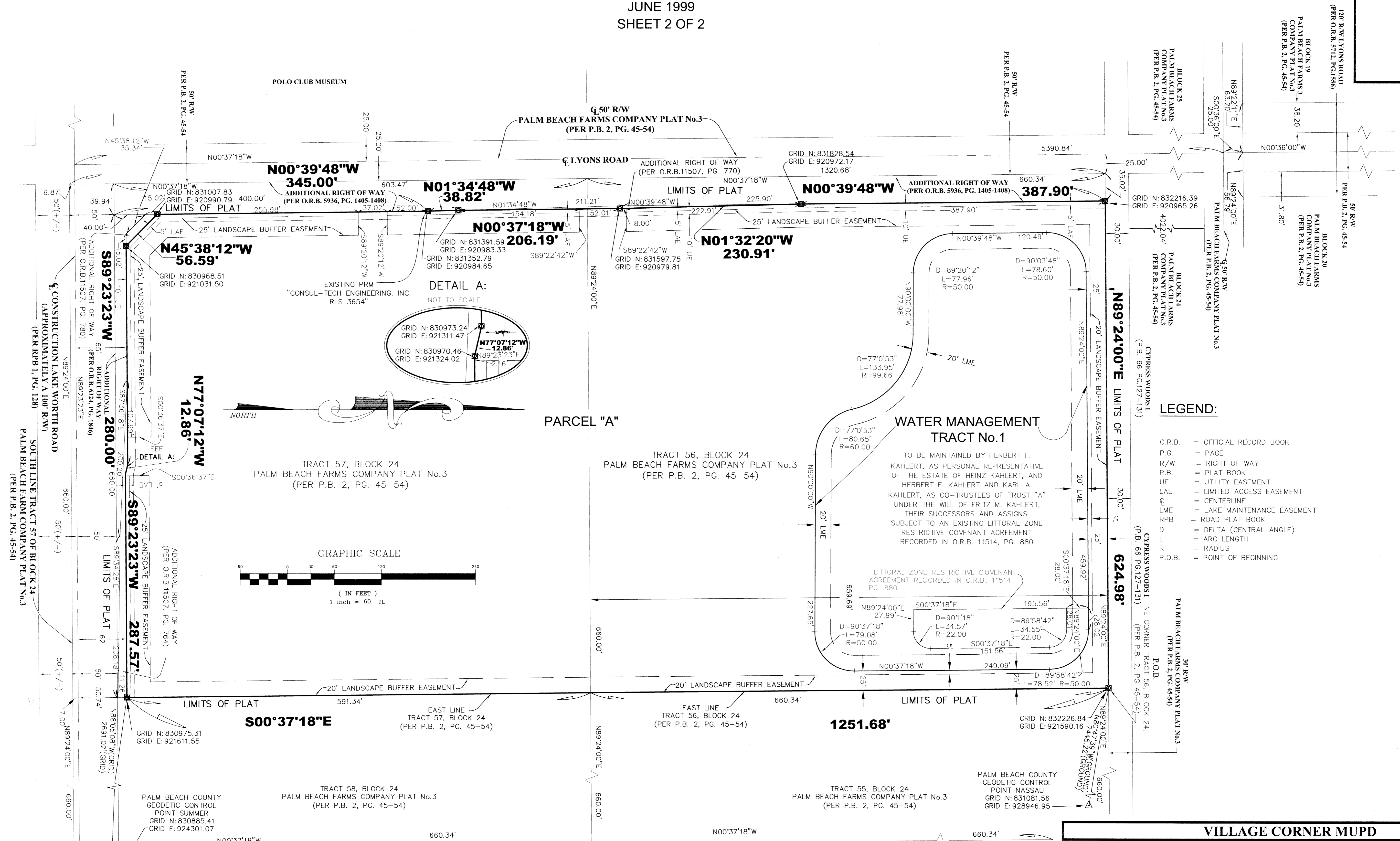


VILLAGE CORNER MUPD

BEING A REPLAT OF A PORTION OF TRACTS 56 AND 57, BLOCK 24,
 PALM BEACH FARMS COMPANY PLAT No. 3, AS RECORDED IN PLAT BOOK 2, PAGES 45
 TROUGH 54 OF THE PUBLIC RECORDS OF PALM BEACH COUNTY, FLORIDA
 LYING IN SECTIONS 19, 20, 29 AND 30 TOWNSHIP 44 SOUTH, RANGE 42 EAST, PALM BEACH
 COUNTY, FLORIDA
 JUNE 1999
 SHEET 2 OF 2



- LEGEND:**
- O.R.B. = OFFICIAL RECORD BOOK
 - P.G. = PAGE
 - R/W = RIGHT OF WAY
 - P.B. = PLAT BOOK
 - UE = UTILITY EASEMENT
 - LAE = LIMITED ACCESS EASEMENT
 - CL = CENTERLINE
 - LME = LAKE MAINTENANCE EASEMENT
 - RPB = ROAD PLAT BOOK
 - D = DELTA (CENTRAL ANGLE)
 - L = ARC LENGTH
 - R = RADIUS
 - P.O.B. = POINT OF BEGINNING

Village Corner MUPD
 PAGE 21
 FLOOD MAP # 60411102A
 ZONING TAVUPD
 SE 9E L-4B
 ZIP CODE 33467
 017
 PUD NAME Village Corner

VILLAGE CORNER MUPD	
	NICK MILLER, INC. Surveying & Mapping Consultants SUITE 105 2560 RCA BLVD. PALM BEACH GARDENS, FLORIDA 33410 TEL 561 627-5200 FAX 561 627-0983 D.B.P.R. LICENSED BUSINESS No. 4318
	SHEET NO. 2 OF 2 SCALE: 1"=60' DATE: JUNE 1999 JOB NO. 98017A FILE: 98017A-2.DWG